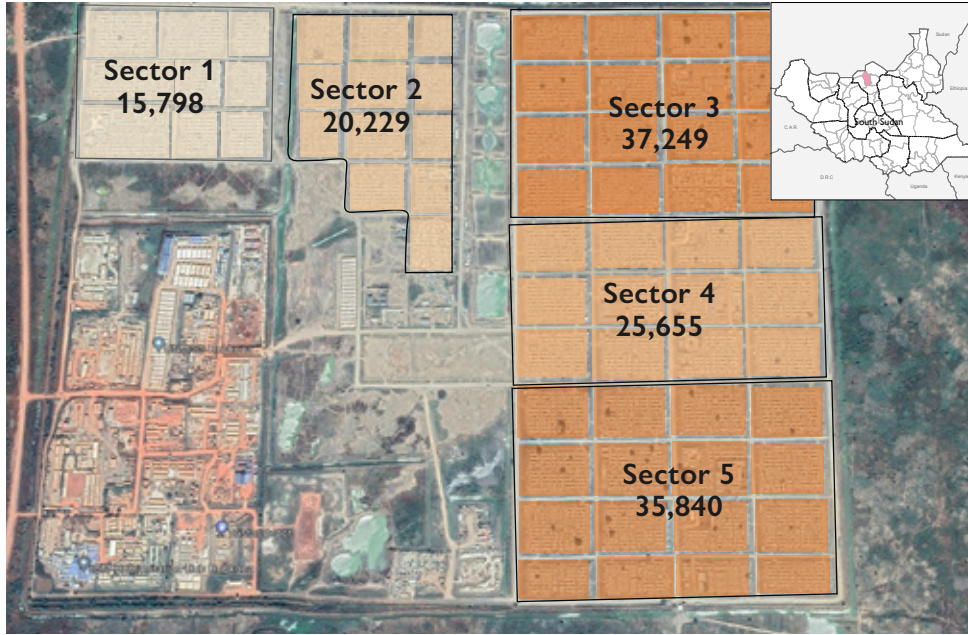


Registration Site

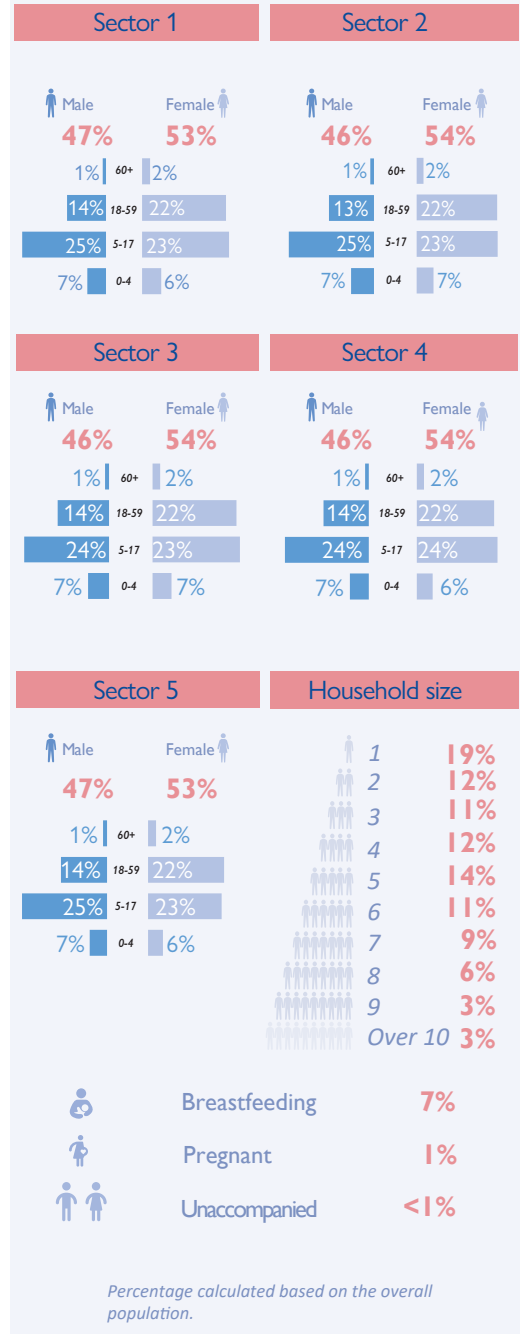
Bentiu Overview Map



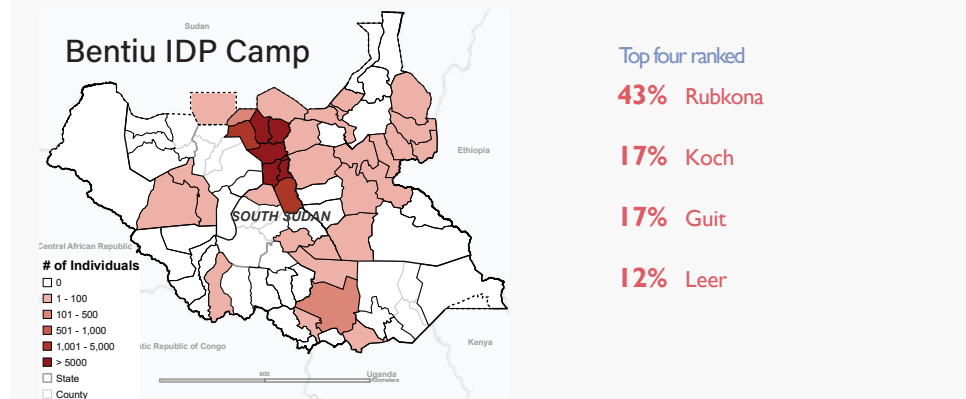
The International Organization for Migration's Displacement Tracking Matrix (IOM DTM) in South Sudan maintains the Biometric Registration database in Bentiu IDP Camp (previously Protection of Civilian Site - PoC). During maintenance IOM DTM carries out registration of newborn babies, replacement of lost cards, merging of households that have requested to be included under one household and handling of referred protection cases from protection partners. In **December 2021** the population of IDPs in the five sectors comprised a total of **134,771 individuals (30,723 households)**.

About 61 per cent of the registered population were found to be youths under the age of 18 years, while 49 per cent were female. Sector 3 was the most populated with 37,249 individuals, representing 28 per cent of the population. Sector 1 was the least populated with 15,798 individuals, representing 12 per cent of the population. Since biometric registrations or verifications are not feasible on a monthly basis, [population counts](#) remain the best possible tool to estimate the site's populations.

Population Profile



Number of individuals per county of habitual residence



Most of the registered individuals in Bentiu IDP Camp arrived from locations within Rubkona followed by locations in Koch County. A minority arrived from other locations in South Sudan. The adjacent map represents the areas of habitual residence 118,321 out of 134,771 registered individuals.

For further information, contact

southsudandtm@iom.int
<https://displacement.iom.int/south-sudan>

DTM is supported by



The names and boundaries on the maps in this document do not imply official endorsement or acceptance by the Government of South Sudan or IOM. This document is for planning purposes only. IOM cannot guarantee that this document is error free and therefore will accept no liability for consequential and indirect damages arising from the use of this product.