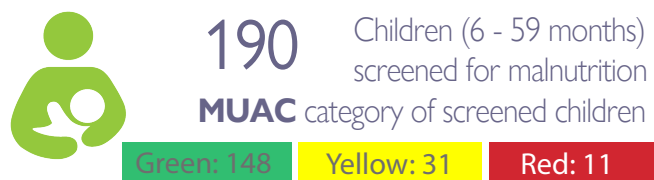


ETT Report: No. 271 | II — 17 April 2022

MOVEMENT NUMBERS AND TYPES



NEW ARRIVALS SCREENING BY NUTRITION PARTNERS



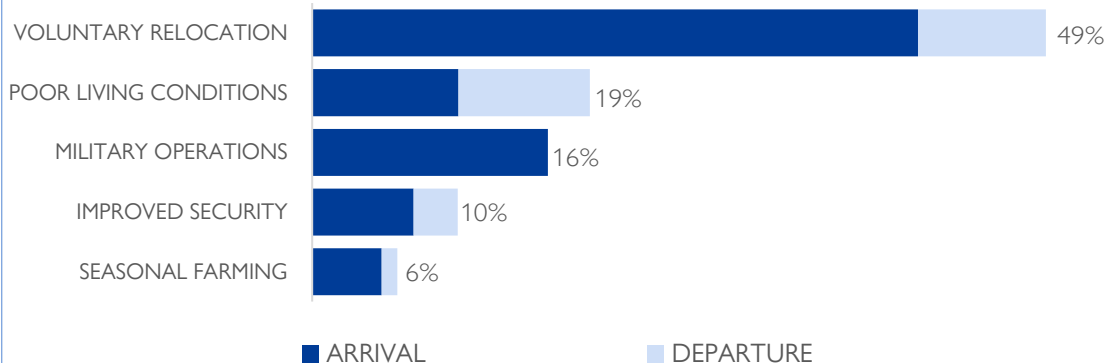
The DTM Emergency Tracking Tool (ETT) is deployed to track and to collect information on large and sudden population movements, provide frequent updates on the scale of displacement and quantify the affected population when needed. As a sub-component of the Mobility Tracking methodology in Nigeria, ETT utilises direct observation and a broad network of key informants to capture best estimates of the affected population per location, enabling targeted humanitarian response planning.

Between 11 and 17 April 2022, a total of 2,081 movements were recorded in Adamawa and Borno States. The recorded movements consisted of 1,632 arrivals and 449 departures. Arrivals were recorded at locations in Askira/Uba, Bama, Gwoza, Kala/Balge, Monguno and Ngala Local Government Areas (LGAs) of the most conflict-affected state of Borno and in Fufore, Gombi, Hong, Lamurde, Maiha, Michika, Mubi North, Mubi South, Song, Yola North and Yola South LGAs of Adamawa State.

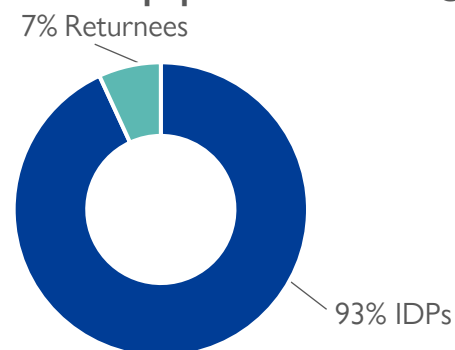
Departures were recorded in Askira/Uba and Bama LGAs of Borno State and in Fufore, Gombi, Hong, Lamurde, Michika, Mubi North, Numan and Song LGAs of Adamawa State.

ETT assessments identified the following movement triggers: voluntary relocation (1,033 individuals or 49%), poor living conditions (391 individuals or 19%), military operations (332 individuals or 16%), improved security (205 individuals or 10%) and seasonal farming (120 individuals or 6%).

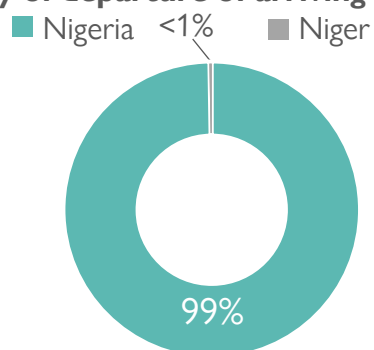
PERCENTAGE OF INDIVIDUALS BY MOVEMENT TRIGGER



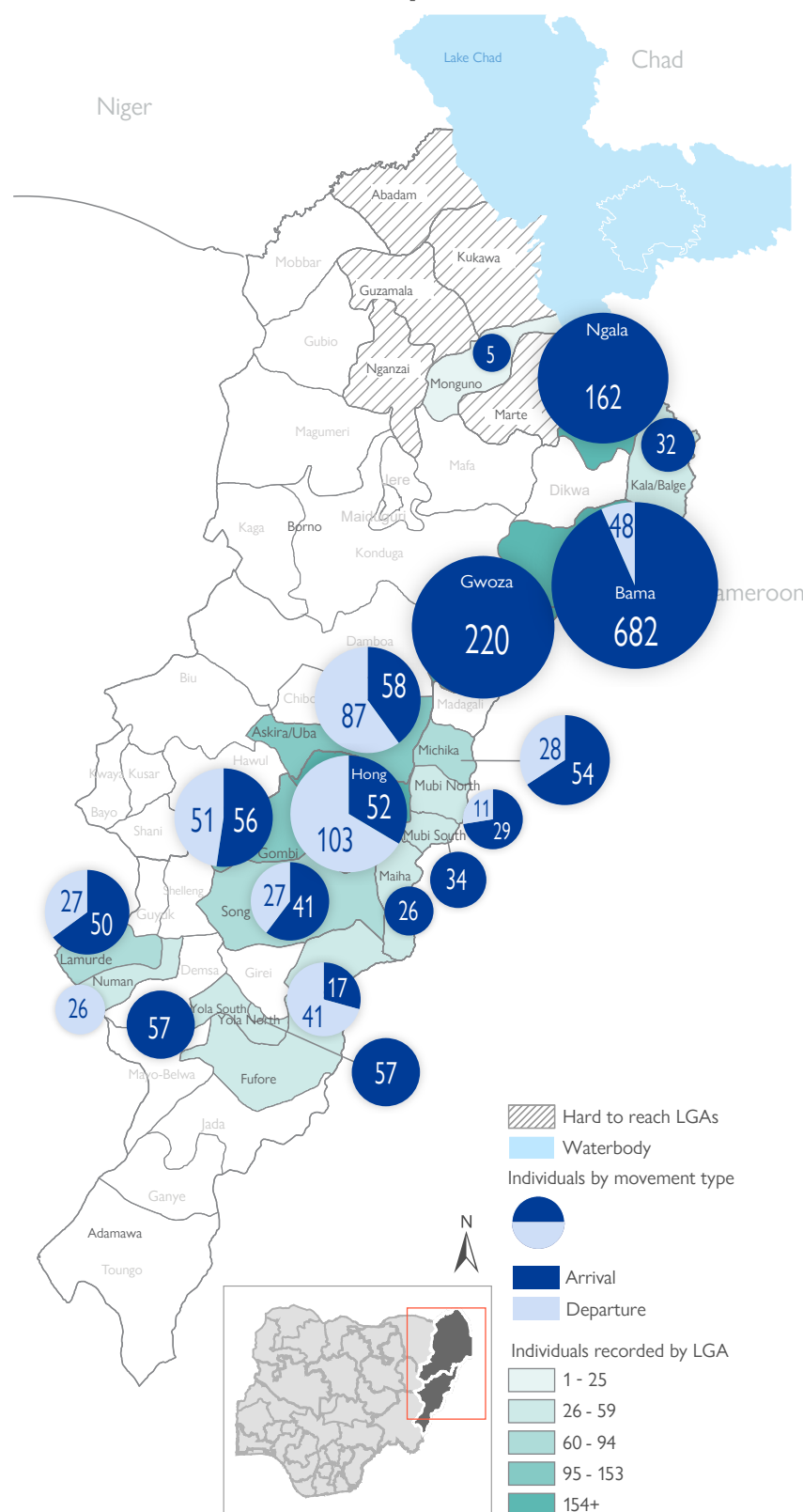
Affected population



Country of departure of arriving population



Movements captured in LGAs



The depiction and use of boundaries, geographic names, and related data shown on maps and included in this report are not warranted to be error-free, nor do they imply a judgment on the legal status of any territory or any endorsement or acceptance of such boundaries by IOM

* Movements in Kala/Balge were captured by ETT outreach staff in the LGA

SUMMARY OF MAJOR MOVEMENTS

Bama: Six hundred and eighty-two (682) arrivals and 48 departures were recorded in Bama LGA of Borno State. All arrivals recorded were from within Bama LGA. The departures included 39 individuals to Gwoza LGA in Borno State and 9 individuals to other locations within Bama LGA. Sixty-three per cent (63%) of the movements were due to voluntary relocation, 32 per cent were due to military operations and 5 per cent were a result of poor living conditions.

Gwoza: Two hundred and twenty (220) arrivals were recorded in Gwoza LGA of Borno State. The arrivals included 181 individuals from within Gwoza LGA and 39 individuals from Bama LGA in Borno State. Fifty-five per cent (55%) of the movements were a result of poor living conditions and 45 per cent were due to military operations.

Ngala: One hundred and sixty-two (162) arrivals were recorded in Ngala LGA of Borno State. All arrivals were from Dikwa LGA in Borno State. All movements recorded were due to voluntary relocation.

Hong: Fifty-two (52) arrivals and 103 departures were recorded in Hong LGA of Adamawa State. The arrivals included 31 individuals from Gombi LGA in Adamawa State and 21 individuals from within Hong LGA. All departures were to other locations within Hong LGA. Fifty-four per cent (54%) of the movements were due to voluntary relocation, 26 per cent were a result of poor living conditions and 20 per cent were due to improved security conditions in areas of origin.

Table 1. Details of movements by locations of assessment and locations of arrival/departure — only movements with at least 17 persons are listed below

Tracking location			Movement location			ARRIVAL	DEPARTURE	GRAND TOTAL
STATE	LGA	WARD	STATE	LGA	WARD			
ADAMAWA	FUFORE	FUFORE	ADAMAWA	FUFORE	RIBADU	-	19	19
		PARIYA		GIREI	WURO DOLE	17	-	17
				SONG	SONG WAJE	-	22	22
	GOMBI	GA'ANDA	BORNO	ASKIRA UBA	UBA	36	-	36
		GOMBI NORTH	ADAMAWA	GIREI	GIREI I	20	-	20
	HONG		ADAMAWA	HONG	GARAHA	-	51	51
		DAKSIRI		HONG	HONG	-	24	24
		GARAHA		GOMBI	GOMBI NORTH	31	-	31
		HILDI		HONG	DAKSIRI	-	38	38
	LAMURDE		ADAMAWA	HONG	UBA	21	-	21
		LAFIYA		LAMURDE	MAYO LOPE	-	41	41
				NUMAN	WADUKU	-	27	27
	MICHIKA	MADZI	ADAMAWA	YOLA SOUTH	SABON PEGI	40	-	40
		MINKISI /MURO NGIKI		YOLA NORTH	BOLE YOLDE PATE	-	28	28
		TUMBARA/NGABULI		MAIHA	NASSARAWO	17	-	17
	MUBI NORTH	YELWA	BORNO	ASKIRA UBA	TAMBAJAM	26	-	26
	MUBI SOUTH	GUDE	BORNO	ASKIRA UBA	HUSARA/TAMPUL	29	-	29
	SONG	SONG GARI	ADAMAWA	GWOZA	GWOZA TOWN GADAMAYO	21	-	21
		SONG WAJE		YOLA SOUTH	NAMTARI	19	-	19
	BORNO	ASKIRA/UBA	DILLE/HUYUM	BORNO	JERE	MAIRI	35	-
HUSARA/TAMPUL			ADAMAWA	MUBI NORTH	YELWA	-	29	29
UBA			BORNO	GWOZA	BITA/IZGE	-	17	17
ZADAWA/HAUSARI			ADAMAWA	GOMBI	GA'ANDA	-	36	36
			HONG	GARAHA	23	-	23	
BAMA		BUDUWA/ BULA CHIRABE	BORNO	BAMA	DIPCHARI/JERE/DAR-JAMAL/KOTEMBE	450	-	450
		SHEHURI/HAUSARI/MAIRI			GULUMBA/JUKKURI/BATRA	27	-	27
					YABIRI KURA/YABIRI GANA/CHONGOLO	123	-	123
						82	-	82
GWOZA		GWOZA WAKANE/BULABULIN	BORNO	GWOZA	DURE/WALA/WARABE	32	-	32
				GWOZA	HAMBAGDA/LIMAN KARA/NEW SETTLEMENT	68	-	68
		PULKA BOKKO		BAMA	SABSABWA/SOYE/BULONGU	28	-	28
NGALA		NGALA	BORNO	GWOZA	DURE/WALA/WARABE	51	-	51
				DIKWA	JOHODE/CHIKIDE/KUGHUM	30	-	30
				DIKWA	MUDU KAZA	162	-	162

NEW ARRIVAL MALNUTRITION SCREENING SUMMARY (CHILDREN 6 — 59 MONTHS)

Between 11 and 17 April 2022, an exhaustive nutrition screening using Mid-Upper Arm Circumference (MUAC) and oedema for acute malnutrition was conducted by sector partners for 190 children of 6-59 months. Of the 190 children screened, the MUAC reading indicated that 11 children were recorded in the red category, 31 children in the yellow category and 148 children in the green category. No case of oedema was reported in the six LGAs assessed.

The results also included 4 children who arrived from neighbouring countries (3 in Gwoza LGA and 1 in Monguno LGA). All the 4 children measured, were in the green category. All children found with acute malnutrition have been admitted for treatment. Please note, the data presented are not surveillance results and should be interpreted with caution.

Please note, the data presented above are not surveillance results and should be interpreted with caution.

Breakdown of MUAC reading by category

							Total
	Green (>12.5cm)		Yellow (11.5cm - 12.5cm)		Red (<11.5cm)		
	Inaccessible	Accessible	Inaccessible	Accessible	Inaccessible	Accessible	
Bama	80	0	23	0	9	0	112
Dikwa	6	0	1	0	0	0	7
Gwoza	31	4	1	0	1	0	37
Kala/Balge	4	0	0	0	0	0	4
Monguno	0	1	0	0	0	0	1
Ngala	22	0	6	0	1	0	29
Total	143	5	31	0	11	0	190

■ Nourished
 ■ Moderate Acute Malnutrition (MAM)
 ■ Severe Acute Malnutrition (SAM)

When quoting, paraphrasing, or in any way using the information mentioned in this report, the source needs to be stated appropriately as follows: "Source: Displacement Tracking Matrix (DTM) of the International Organization for Migration, Nigeria Mission, April 2022".

For more information or to report an alert, please contact: DTM Nigeria: iomnigeriadtm@iom.int

<https://displacement.iom.int/nigeria> ; <https://dtm.iom.int/nigeria>

