

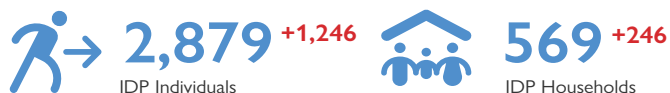
EMERGENCY EVENT TRACKING

Data collection: 20 April 2022

CONFLICT

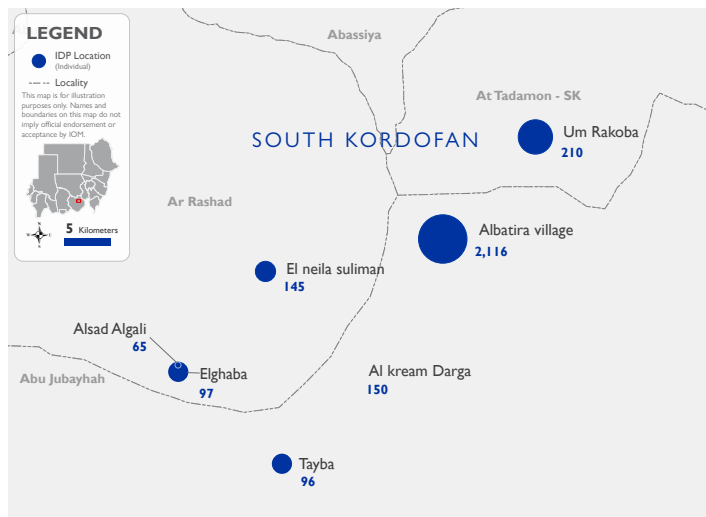
The DTM Emergency Event Tracking (EET) is deployed to track sudden displacement and population movements, provide more frequent updates on the scale of displacement and quantify the affected population when needed. As a subcomponent of the new Mobility Tracking methodology in Sudan ([Round Three](#)), and activated on a need basis, EET utilises a broad network of key informants to capture best estimates of the affected population presence per location – a useful tool for humanitarian response planning and design.

## Event Overview

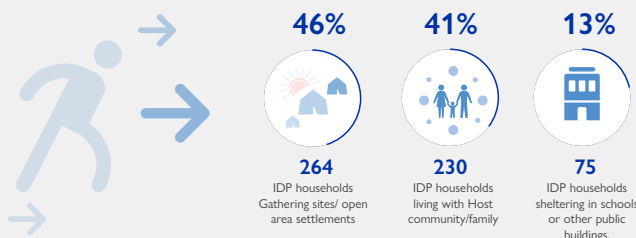


DTM Sudan activated EET to monitor the displacement of individuals affected by an inter-communal dispute involving the Kawahla and Al-Bedaria tribes, as well as the SPLM Al-Hilu in Ar Rashad locality, South Kordofan on 9 April 2021. For more information, please see [EET Ar Rashad, South Kordofan \(Update 001\)](#). The second EET update estimates a total number of 2,879 IDPs (569 households) currently seeking shelter in Albatira village (75%), Al Kream Darga (5%), and Tayba (3%) in Abu Jubayhah locality, El Neila Suliman (5%), Elghaba (3%), Alsad Algali (2%) in Ar Rashad locality, as well as Um Rakoba (7%) in At Tadamon locality, South Kordofan. The increase in the IDP caseload can be largely attributed to field teams visiting a greater number of gathering sites. The entire IDP caseload was originally displaced from Kabos Area (100%) in Ar Rashad, South Kordofan.

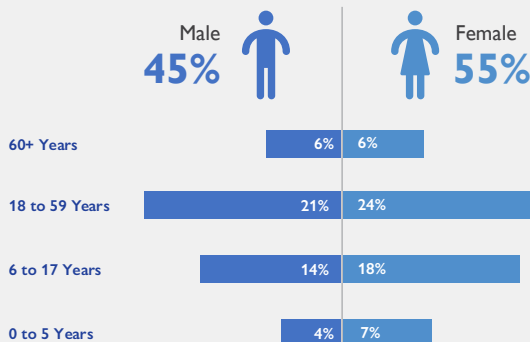
Upon verification, field teams indicate one individual has been reportedly killed, no individuals have been injured, and there are 220 reported cases of lost goods, cattle and/or livestock. All displaced individuals are Sudanese nationals. At least 347 cases of additional vulnerabilities in need of assistance and support were identified by key informants through DTM's protection indicator. Additionally, DTM Sudan estimates that there are approximately 432 persons with disabilities among the IDP caseload.<sup>1</sup> Based on a ranking scale, the three priority needs across the caseload are Emergency Shelter, Food, and Non-Food Items.



## Shelter Indicator

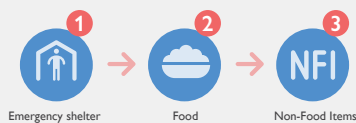


## Demographics

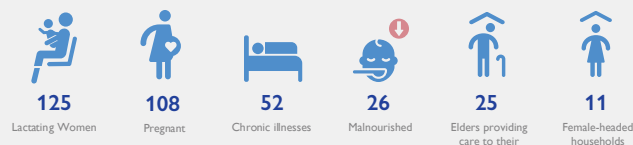


## Priority needs

Ranking scale



## Vulnerabilities



## Return Intention

DTM Sudan adopts the WHO global estimate that approximately 15% of the total population are persons with disabilities (PwDs).

### IOM DISCLAIMER

The opinions expressed in the report are those of the authors and do not necessarily reflect the views of the International Organization for Migration (IOM). The designations employed and the presentation of material throughout the report do not imply the expression of any opinion whatsoever on the part of IOM concerning the legal status of any country, territory, city or area, or of its authorities, or concerning its frontiers or boundaries.

IOM is committed to the principle that humane and orderly migration benefits migrants and society. As an intergovernmental organization, IOM acts with its partners in the international community to: assist in the meeting of operational challenges of migration; advance understanding of migration issues; encourage social and economic development through migration; and uphold the human dignity and well-being of migrants.