



©IOM 2021

# ETHIOPIA NATIONAL DISPLACEMENT REPORT II

## Site Assessment Round 28 & Village Assessment Survey Round II: December 2021 — February 2022

*Publication Date: April 2022*



**USAID**  
FROM THE AMERICAN PEOPLE



Humanitarian Aid  
and Civil Protection



**UKaid**  
from the British people

**EHF**

Ethiopia  
Humanitarian  
Fund

## **ADDRESS**

International Organization for Migration (IOM)  
Special Liaison Office (SLO) Ethiopia  
Kirkos Sub City, Woreda 8  
YeMez Building (Behind Zequala Building)  
P.O.Box 25283 Code 1000  
Addis Ababa, Ethiopia.  
Tel.: +251 1155 71 707  
Website: <http://www.ethiopia.iom.int>

For more information, kindly contact DTM Ethiopia at [dtmethiopia@iom.int](mailto:dtmethiopia@iom.int) or contact Sarah Choong, DTM Programme Manager at [schoong@iom.int](mailto:schoong@iom.int).

## **DISCLAIMER**

The opinions expressed in the report are those of the authors and do not necessarily reflect the views of the International Organization for Migration (IOM). The designations employed and the presentation of material throughout the report do not imply the expression of any opinion whatsoever on the part of IOM concerning the legal status of any country, territory, city or area, or of its authorities, or concerning its frontiers or boundaries.

IOM is committed to the principle that humane and orderly migration benefits migrants and society. As an intergovernmental organization, IOM acts with its partners in the international community to: assist in the meeting of operational challenges of migration; advance understanding of migration issues; encourage social and economic development through migration; and uphold the human dignity and well-being of migrants.

## **COPYRIGHT**

All rights reserved. No part of this publication may be reproduced, stored in a retrieval system, or transmitted in any form or by any means, electronic, mechanical, photocopying, recording, or otherwise without the prior written permission of the publisher.

# CONTENTS

<b>Introduction</b> .....	i-ii
---------------------------	------

## **Section I**

<b>Key Findings: Site Assessment</b> .....	2
--	---

<b>Methodology</b> .....	3
--------------------------	---

### **Overview of Displacement**

<b>National level</b> .....	4-5
-----------------------------	-----

<b>Regional level</b> .....	6-17
-----------------------------	------

## **Section 2**

<b>Key Findings: Village Assessment Survey</b> .....	19
--	----

<b>Methodology</b> .....	20
--------------------------	----

### **Overview of Return**

<b>National Level</b> .....	21
-----------------------------	----

<b>Regional Level</b> .....	22-32
-----------------------------	-------

## **Annex A**

<b>Summary Table of Displacement</b> .....	33-43
--	-------

## **Annex B**

<b>Summary Table of Return</b> .....	44-47
--------------------------------------	-------

# INTRODUCTION

## Background: Population Mobility and Internal Displacement in Ethiopia

Ethiopia faces significant internal displacement. In 2018, Ethiopia recorded the third highest number of new displacements worldwide, with 3,191,000 internally displaced persons (IDPs) identified.<sup>1</sup> A significant portion of these displacements are conflict-induced, largely related to ethnic and border-based disputes. Old tensions such as the contestation of the Oromia-Somali regional border which first flared up in 2017 continue to persist, while new conflicts have also emerged. Conflict broke out in 2016 over the administrative designation of then Konso woreda in SNNP region; in 2018 Konso was formally recognized as a zone, but in the years since conflict has only continued. In April and later in June 2018, conflict which was aggravated by competition for land and resources broke out between Gedeo and Guji Oromo tribes in West Guji. It is estimated that by August 2018, 748,499 IDPs were displaced from the Gedeo-West Guji conflict alone.<sup>2</sup> In September 2020 frequent attacks from unidentified armed groups (UAGs) on the border of Benishangul Gumz region led to increasing displacement to Awi zone in Amhara region. This continued to intensify and in January 2021 displacement reached a peak of 76,000 at its height.<sup>3</sup>

In early November 2020, the regional party of Tigray allegedly attacked the Northern Command of Ethiopia's National Defense Force in Mekelle, Tigray region, prompting a military offensive from the federal government of Ethiopia. Following this, conflict broke out in the North of Ethiopia resulting in significant displacement. After a change of administration in Tigray region at the end of June 2021, the conflict moved further south into Afar and Amhara regions but began to subside around January 2022.

In mid-April 2021, conflict broke out in Ataye City Administration in North Shewa zone of Amhara region and the surrounding areas, which led to mass displacement in the zone. Estimated displacement following the conflict, according to government sources, reached 310,000 IDPs at its peak. This brought displacement in Ethiopia to 4.5 million IDPs as of February 2022.

Ethiopia is also riddled with climate-induced displacement mainly caused by drought and floods. Beginning in 2015, Ethiopia faced one of the strongest onsets of El Niño, a periodic heating of the eastern tropical Pacific, which reduced the *kiremt* rainfall<sup>4</sup> and successively resulted in drought in the Southern and Southeastern parts of the country.<sup>5</sup> Somali region is particularly prone to climate induced displacement. In 2021, both the rainy seasons failed to provide sufficient rain to the region, which has caused a shortage of pastureland, water and food and led to an increase in pastoralists migrating in search of water and pasture for their livestock. According to the Somali Region Drought Response Plan published in December 2021, many of the early warning triggers including poor performance of rains, crop failure and shortage of water for both humans and animals have anecdotally been observed in the region.<sup>6</sup> Floods are another major cause of climate-induced displacement. While certain areas experienced reduced rainfall, others experienced heavy rainfall and floods during the rainy season in many low lying areas. According to predictions from the Ethiopia Meteorological Agency there is a high potential for upcoming severe flooding in the lowlands, and the region continues to cope with the lasting impact of the damage from the overflowing of the Shabelle, Ganale, and Dawa rivers in 2020 which damaged crops and has also contributed to food insecurity in the region.<sup>7</sup>

<sup>1</sup> Internal Displacement Monitoring Centre, 2019. *Global Report on Internal Displacement (GRID) 2019 Report*. Available at: <http://www.internal-displacement.org/sites/default/files/publications/documents/2019-IDMC-GRID.pdf>.

<sup>2</sup> Displacement Tracking Matrix (DTM), 2018. *Ethiopia — Gedeo/West Guji Rapid Response Assessment Round 2 (11 — 23 August 2018) — Host Community Dataset*. Available at: <https://displacement.iom.int/datasets/ethiopia-%E2%80%94-gedeowest-guji-rapid-response-%E2%80%94-host-community-dataset-%E2%80%94-site-assessment-%E2%80%94-round>.

<sup>3</sup> Displacement Tracking Matrix (DTM), 2021. *Ethiopia — National Displacement Report (March - April 2021)*. Available at: <https://displacement.iom.int/reports/ethiopia-%E2%80%94-national-displacement-report-8-march-%E2%80%94-april-2021?close=true>.

<sup>4</sup> Kiremt rain is the summer rain that normally lasts between June to September. This rain is crucial for the main meher harvest. Conversely, the belg rain is the spring rain that usually spans between March to August.

<sup>5</sup> USAID, 2016. *El Niño in Ethiopia 2015 – 2016: A Real-Time Review Of Impacts And Responses*. Available at: <https://www.agri-learning-ethiopia.org/wp-content/uploads/2016/06/AKLDP-El-Nino-Review-March-2016.pdf>.

<sup>6</sup> Somali Region Multi-Sector Operational Drought Response Plan, December 2021.

<sup>7</sup> Ibid.



Adding to the high mobility landscape of Ethiopia is the number and rate of returns. Following the reduction in conflict in January 2022 in many parts of Afar and Amhara regions affected by the Northern Ethiopia Crisis, returns have begun which can be seen in the +422% increase in returns in Afar region and +584% increase in Amhara region in January and February 2022. The increase is mainly due to mass returns in North Wollo (494,317 returning IDPs), North Shewa (484,690 returning IDPs) and South Wollo (294,774 returning IDPs) zones in Amhara region.<sup>8</sup>

In March 2020, the Ministry of Health confirmed the first COVID-19 case in Ethiopia. Since then, the number of confirmed COVID-19 cases has increased to 468,770 cases as of 1 March 2022.<sup>9</sup> The spread of COVID-19 and regulations to curb it has caused unemployment and has exacerbated the food insecurity situation in the country.

## IOM Population Observation in Ethiopia

In order to capture population mobility and internal displacement in Ethiopia, IOM's Displacement Tracking Matrix (DTM) is deployed to track internally displaced persons (IDPs), returning IDPs, migrants and returned migrants. IOM entered into partnership with the Ethiopia Disaster Risk Management Commission (EDRMC) in August 2016, and has since been regularly implementing DTM assessments in Ethiopia since September 2016.

DTM tools that are active in Ethiopia, include a quarterly Site Assessment (SA) which focuses on tracking internal displacement and a quarterly Village Assessment Survey (VAS) aimed at tracking returns. SA covers areas where there are reports of 20 or more IDP households, whereas VAS covers areas where there are reportedly 5 or more returning IDP households. In addition, an Emergency Site Assessment (ESA) tool has been deployed to cover crises with significant displacement, such as the Northern Ethiopia Crisis.

Figure 1 illustrates DTM's coverage of its SA, VAS and ESA tools. The areas in blue represent areas that were exclusively covered by SA, while the areas in yellow represent areas that were only covered by VAS. The areas in green represent areas where both SA and VAS were deployed. The areas covered in pink represent areas covered exclusively by the ESA round 9, while the orange represents areas covered by the ESA round 8. It should be noted that a new ESA could not be done in Tigray region due to the lack of fuel and cash.

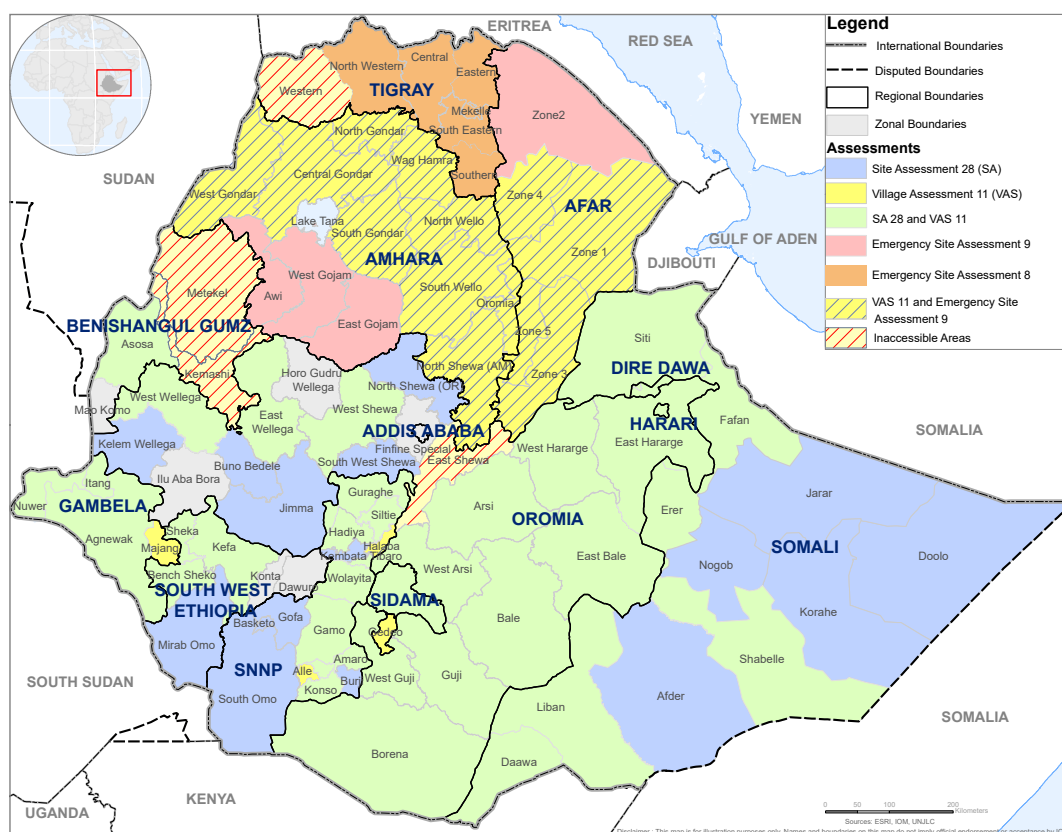


Figure 1: Geographic coverage of DTM assessments in December 2021, January 2022 and February 2022.

<sup>8</sup> Refer to pages 19-23 in the following report.

<sup>9</sup> Ministry of Health, Ethiopia, 2021. Available at: <http://www.moh.gov.et/ejcc/>.

# **Section I**

## **Site Assessment**

## KEY FINDINGS — SITE ASSESSMENT & EMERGENCY SITE ASSESSMENT



Site Assessment: 1,440 sites covered  
Emergency Site Assessment: 1,224 sites covered



Site Assessment: 222 inaccessible sites  
Emergency Site Assessment: 63 inaccessible sites

### Internally Displaced Persons (IDPs) — Nationwide



4,509,081 individuals\*



890,332 households



+6% increase in IDPs since National Displacement Report 10  
(where there were 4,239,636 IDPs)

#### Reasons for Displacement



3,632,068 conflict displaced IDPs  
(81%) in 2,184 sites



420,887 drought displaced IDPs  
(9%) in 225 sites



171,727 social tension displaced IDPs  
(4%) in 39 sites

Other reasons for displacement included: Seasonal Floods (122,901), Flash Floods (119,807 IDPs), Landslides (22,016 IDPs), Swampy Lands (10,904 IDPs), Hydropower Projects (4,619 IDPs), Strong Winds (3,771 IDPs), Fire (256 IDPs) and Economic Factors (125 IDPs).

	SITE ASSESSMENT	EMERGENCY SITE ASSESSMENT	TOTAL
AFAR	-	175,264*	175,264*
AMHARA	-	462,529*	462,529*
BENISHANGUL GUMZ	26,852*	-	26,852*
DIRE DAWA	570	-	570
GAMBELA	43,809	-	43,809
HARARI	3,124	-	3,124
OROMIA	792,686	-	792,686
SIDAMA	40,637	-	40,637
SNNP	198,493	-	198,493
SOMALI	932,568	-	932,568
SOUTH WEST ETHIOPIA PEOPLES	18,265	-	18,265
TIGRAY	-	1,814,284*	1,814,284*
<b>GRAND TOTAL</b>	<b>2,057,004</b>	<b>2,452,077</b>	<b>4,509,081</b>

\*The total number of internally displaced persons is collected through Site Assessment round 28 implemented in December 2021 and January 2022 in 9 regions; Emergency Site Assessment round 9 implemented in January and February 2022 in Afar and Amhara regions and Emergency Site Assessment round 8 implemented primarily in August 2021 in Tigray region. Zone 2 in Afar region was largely inaccessible during this round of data collection due to ongoing conflict and insecurity, which has likely lowered the number of IDPs reported for the region. DTM regained access to Benishangul Gumz region this round, but access was still limited to sites in Assossa zone. Due to a lack of fuel and cash in Tigray region, a new round of Emergency Site Assessment could not be conducted. Though there has not been a new round, the number of IDPs in Tigray has dropped significantly due to returns.

# SITE ASSESSMENT METHODOLOGY

IOM Ethiopia employs a series of tools in its DTM. The present methodology refers to the Site Assessment tool which falls under the Mobility Tracking component of the DTM. Data for this tool is collected at the zonal, woreda and site level on a quarterly basis. Since September 2016, IOM Ethiopia has conducted 28 rounds of data collection. The DTM programme is implemented in close collaboration with the Ethiopia Disaster Risk Management Commission (EDRMC) and regional, zonal and woreda counterparts.

IOM’s DTM team is composed of 150 field enumerators, under the direct supervision of 15 field focal points, and the overall supervision of the DTM team based at IOM’s Addis Ababa Country Office. The data collection methodology is divided into three administrative levels:

**Zone level:** Data is collected through interviews with key informants from the Disaster Risk Management Office (DRMO), community representatives, and the education and health offices. This data includes the estimated number of displaced individuals, a list of woredas within the zone that hosts displaced persons, reasons for displacement, time of arrival of IDPs and their locations.



Data collection:  
1 December 2021 — 7 January 2022

**Woreda level:** Information is collected through key informants at woreda level and data collected includes number of displaced households and individuals at woreda level, site typology and approximate locations of identifiable displacement sites among other indicators. The information is used to plan the roll out of the Site Assessment.

**Site level:** In-depth Site Assessments capture detailed information through focus group discussions, key informant interviews and direct observation. The focus group discussions are made up of 7 individuals comprising of male, female, elderly and youth IDP representatives. The Site Assessment is conducted at sites where there are 20 IDP households or more. Data on available services by sector, accessibility constraints, exact type, location and name of the site, place of origin of IDPs, estimated size and type of the site and most common type of shelter are captured. Age and gender disaggregation for the site is extrapolated using a demographic calculator tool based on the age range and sex of the household members. A total of 30 IDP households are sampled at each site. However, all households are sampled for sites where there are fewer than 30 IDP households.

## Coverage of this round

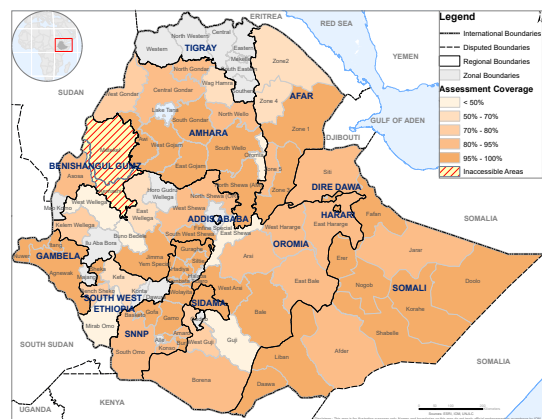
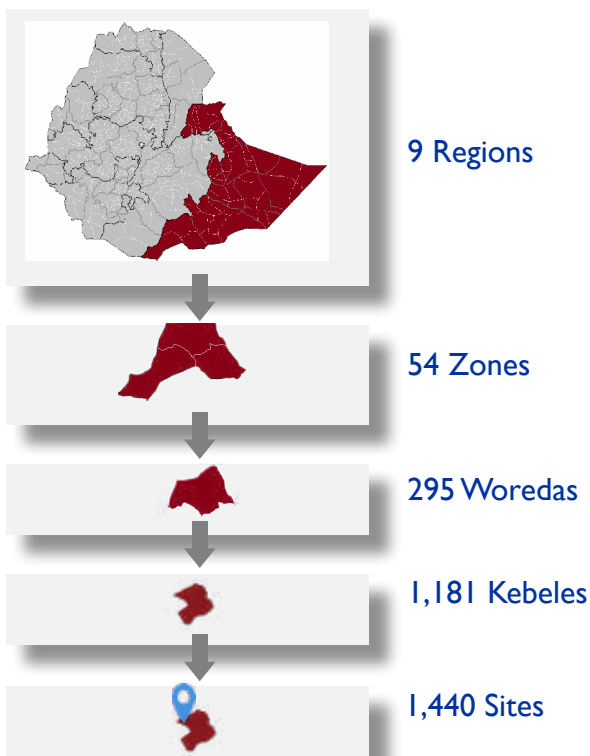


Figure 2: The map depicts the percentage of sites assessed by DTM at zonal level for this round.



222 Inaccessible Sites

For round 28, 209 sites had insecurity issues, mainly in West Wallaga, East Wallaga, Guji, West Guji, Metekel and Kemashi zones. 10 sites were inaccessible due to road issues in Afdar, Liban, South Omo, East Harerge, East Bale and Amaro Special Woreda, and 3 sites were inaccessible due to operational interference in East Shewa zone.



# OVERVIEW OF DISPLACEMENT

## National Level

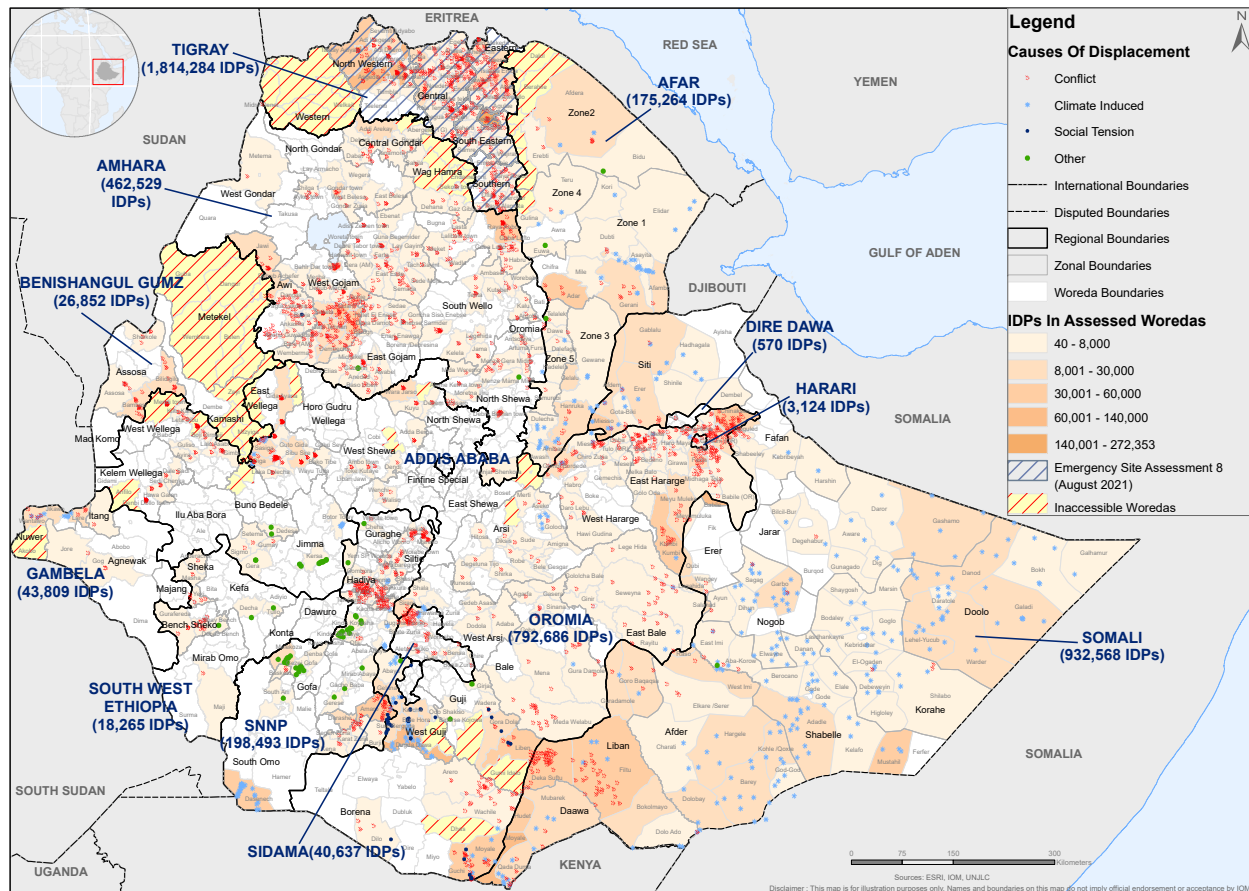


Figure 3: The displacement caseload in Ethiopia based on data collected December 2021 to February 2022 from the Site Assessment and Emergency Site Assessment.

According to data collected through the Site Assessment round 28 in December 2021 and January 2022, the Emergency Site Assessment round 9 conducted in Afar and Amhara regions in January and February 2022 and the Emergency Site Assessment round 8 conducted in Tigray primarily in August 2021, 4.51 million IDPs (890,332 households) were internally displaced across 2,664 accessible sites in Ethiopia. This reflects a +6.36% increase of 269,445 IDPs since the previous round's data collection in August and September 2021.

The gender breakdown of IDPs is almost equal with 2,216,883 males (49%) and 2,271,410 females (50%).\* Conflict remains the primary cause of displacement and displaced 3.63 million IDPs (81%), while drought displaced 420,887 IDPs (9%), social

tension displaced 171,727 IDPs (4%), seasonal floods 122,901 (3%), flash floods displaced 119,807 IDPs (3%), landslides displaced 22,016 IDPs (<1%), swampy land displaced 10,904 (<1%), hydropower projects displaced 4,619 IDPs (<1%), strong winds displaced 3,771 IDPs (<1%), fire displaced 256 IDPs (<1%) and economic factors displaced 125 IDPs (<1%). There was a notable increase in displacement caused by drought particularly in Liban and Dawa zones in Somali region and in displacement caused by social tension especially in West Guji and Guji zones in Oromia region.

Factors preventing return as cited by respondents include damaged or destroyed houses and livelihoods in 1,443 sites (54%) and 1,421 sites (53%) respectively, followed by a lack of food in 1,259 sites (47%).

\*The sex and age breakdown was not collected at the beginning of the Northern Ethiopia Crisis, so the gender breakdown does not add up to the total number of individuals reported.

## National Displacement Timeline

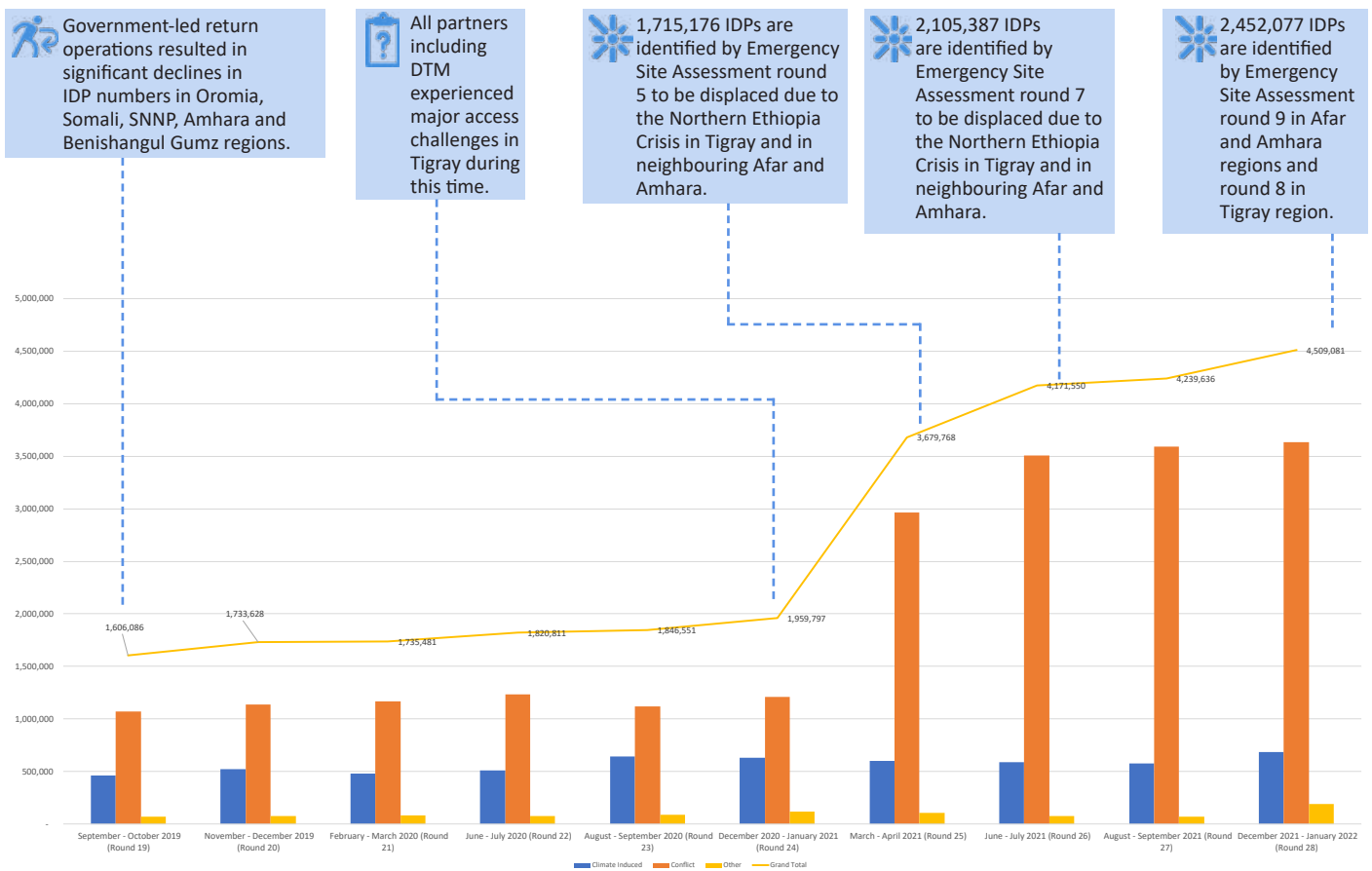


Figure 4: Number of IDPs identified nationwide by DTM since September - October 2019 (SA round 19). Round totals include displacement data captured through previously conducted Rapid Response Assessments and the ongoing Emergency Site Assessments.

IOM Ethiopia has been collecting data on internal displacement via its Site Assessment tool for 28 rounds now. Round 20 (November-December 2019) and round 21 (February-March 2020) experienced increases in the number of IDPs to 1.73 million IDPs and 1.74 million IDPs respectively.

In round 22 (June-July 2020), the total number of IDPs increased to 1.82 million but this can be largely explained by the new coverage of SNNP and Sidama regions which captured an additional 93,982 IDPs. There was only a marginal increase in round 23 (August-September 2020) to 1.84 million IDPs. In round 24 the number of IDPs increased to 1.95

million IDPs. In round 25 (March-April 2021), the total number of IDPs increased to 3.7 million. This increase was due to the 1.7 million IDPs displaced by the Northern Ethiopia Crisis and identified through Emergency Site Assessment (ESA) round 5.

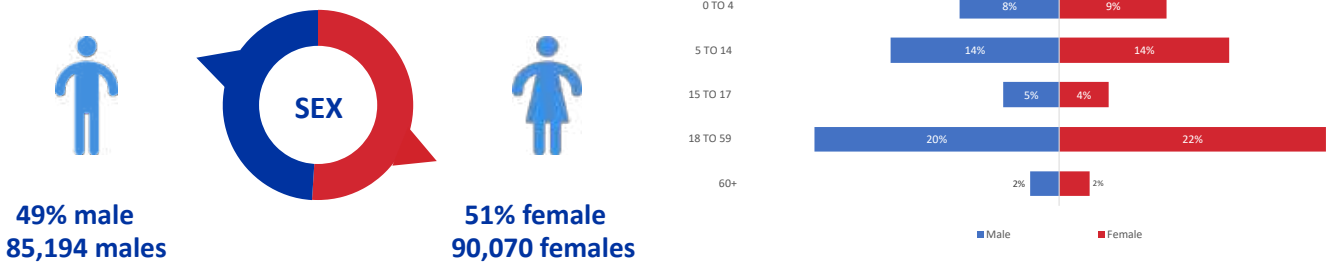
Since then, the number of IDPs has increased to 4.5 million IDPs throughout the country as of round 28 (December 2021 - January 2022), and this is inclusive of the 2.45 million IDPs displaced by the Northern Ethiopia Crisis identified through ESA round 9 (January - February 2022) in Afar and Amhara regions and ESA round 8 (August 2021) in Tigray region.

## Afar

### Emergency Site Assessment



### Sex and age breakdown of IDPs



The Emergency Site Assessment (ESA) round 9 was conducted to capture internal displacement caused by the Northern Ethiopia Crisis and was rolled out from 10 January — 15 February 2022. In the second half of 2021, the conflict moved south into Afar region, which resulted in significant displacements. Following a reduction in conflict in January 2022, returns began which can be seen in the reduction of IDPs captured in the round particularly in Zone 4 (Fenti). Notably, 6 woredas in Zone 2 (Kilbati) specifically Aba Ala, Dalol, Koneba, Berhale, Megale and Erebt were inaccessible during the round due to conflict, but it is likely that there are a considerable number of conflict IDPs there that could not be accessed. Afar region was previously covered by both the Site Assessment and the Emergency Site Assessment, but as the Northern Ethiopia Crisis extended south into the region in the last months of 2021 to increase operational efficiency only ESA was carried out in the region this round. The ESA is a multisectoral location assessment which assesses the number of IDPs and collects basic information on the multisectoral needs of IDPs at site level.

## Displacement Caseload and Causes of Displacement in Afar

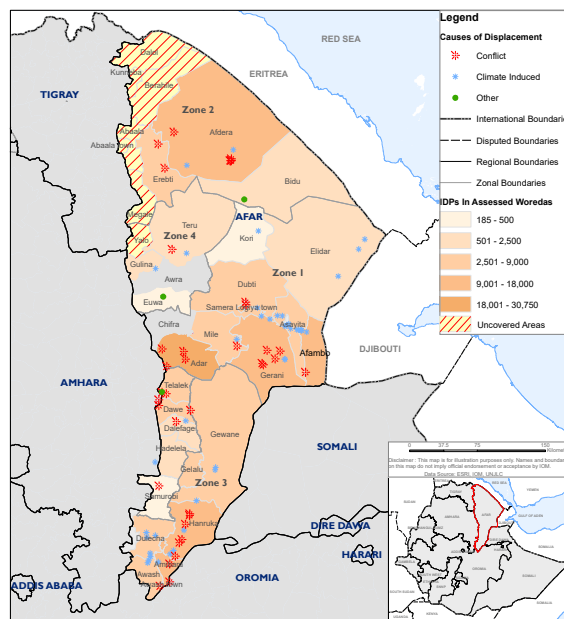


Figure 5: Displacement figures for Afar region based on Emergency Site Assessment round 9.

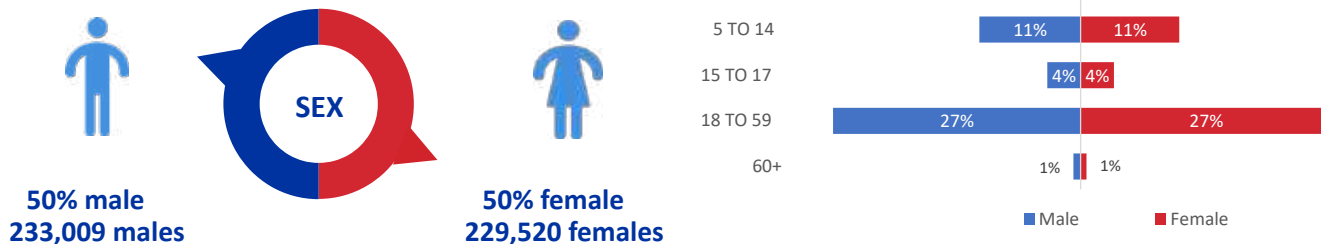
\*Zone 2 was largely inaccessible this round due to ongoing conflict and insecurity, which has likely artificially lowered the number of IDPs in the region.

## Amhara

### Emergency Site Assessment



### Sex and age breakdown of IDPs



The Emergency Site Assessment (ESA) round 9 was conducted to capture internal displacement caused by the Northern Ethiopia Crisis and was rolled out from 10 January — 15 February 2022. In the second half of 2021, conflict began to move south from Tigray into Amhara region, which resulted in very significant displacements in Wag Hamra, North Wollo, South Wollo and North Shewa zones. Many of the IDPs from Wag Hamra and North Wollo zones were first displaced to South Wollo zone and then as the conflict moved further south were secondarily displaced to North Shewa zone. Following a reduction in conflict in January 2022, returns began which can be seen in the significant reduction of IDPs captured in the round. Due to these mass returns, the highest concentration of IDPs is now in West Gojam zone with many IDPs originating from Metekel zone in Benishangul Gumz region and from East Wellega zone in Oromia region. Most of Wag Hamra zone of Amhara region remained inaccessible due to conflict during the round. Amhara region was previously covered by both the Site Assessment and the Emergency Site Assessment, but as the Northern Ethiopia Crisis extended south to increase operational efficiency only ESA was carried out in the region this round. The ESA is a multisectoral location assessment which assesses the number of IDPs and collects basic information on the multisectoral needs of IDPs at site level.

## Displacement Caseload and Causes of Displacement in Amhara

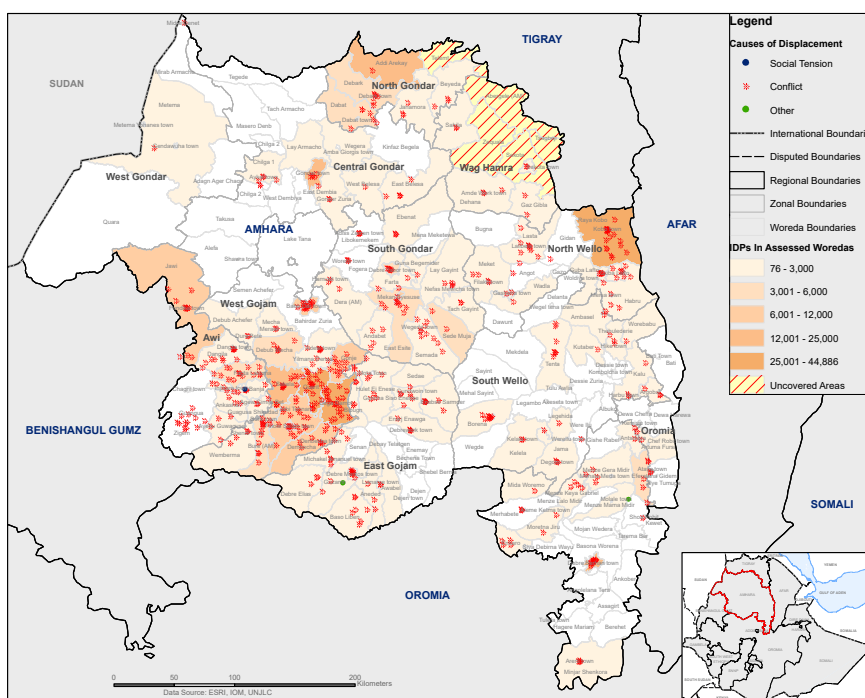


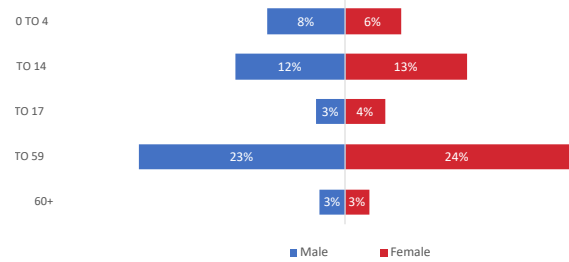
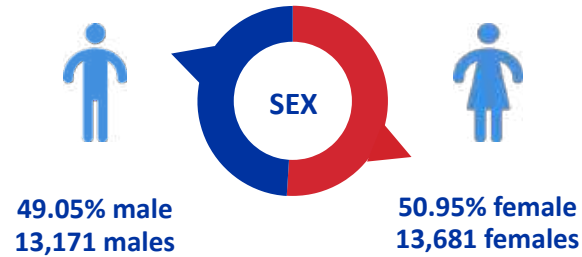
Figure 6: Displacement figures for Amhara region based on Emergency Site Assessment round 9.



### Benishangul Gumz



### Sex and age breakdown of IDPs



6,442 households comprising 26,852 IDPs were identified in 35 sites in Benishangul Gumz region. The region was inaccessible in round 27, but these figures represent an increase of 25,785 IDPs since round 26 (June — July 2021). Attacks from unidentified armed groups in the region have led to the displacement of individuals in Metekel and Kemashi zones. Despite an increase in coverage, sites in Kemashi and Metekel zones could not be covered due to insecurity; it should be noted that the displacement figures for Benishangul Gumz region should be higher. Conflict was the cause of displacement for an estimated 26,852 IDPs, or 100% of the displaced population.

### Displacement Caseload and Causes of Displacement in Benishangul Gumz

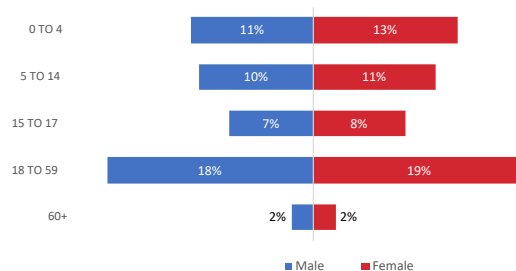
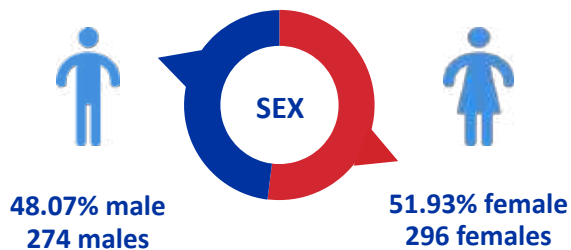


Figure 7: Displacement figures for Benishangul Gumz region based on Site Assessment round 28.

### Dire Dawa



### Sex and age breakdown of IDPs



114 households comprising 570 IDPs were identified in 1 site in Dire Dawa. There was a 77.12% decrease in the number of IDPs in the region (1,921 IDPs) since the previous round 27 (August — September 2021) due to the relocation of IDPs from the Millenium Park site in Dire Dawa region to Somali region and the subsequent closure of the location. Conflict was the primary reason for displacement for 570 IDPs, or 100% of the displaced population.

## Displacement Caseload and Causes of Displacement in Dire Dawa

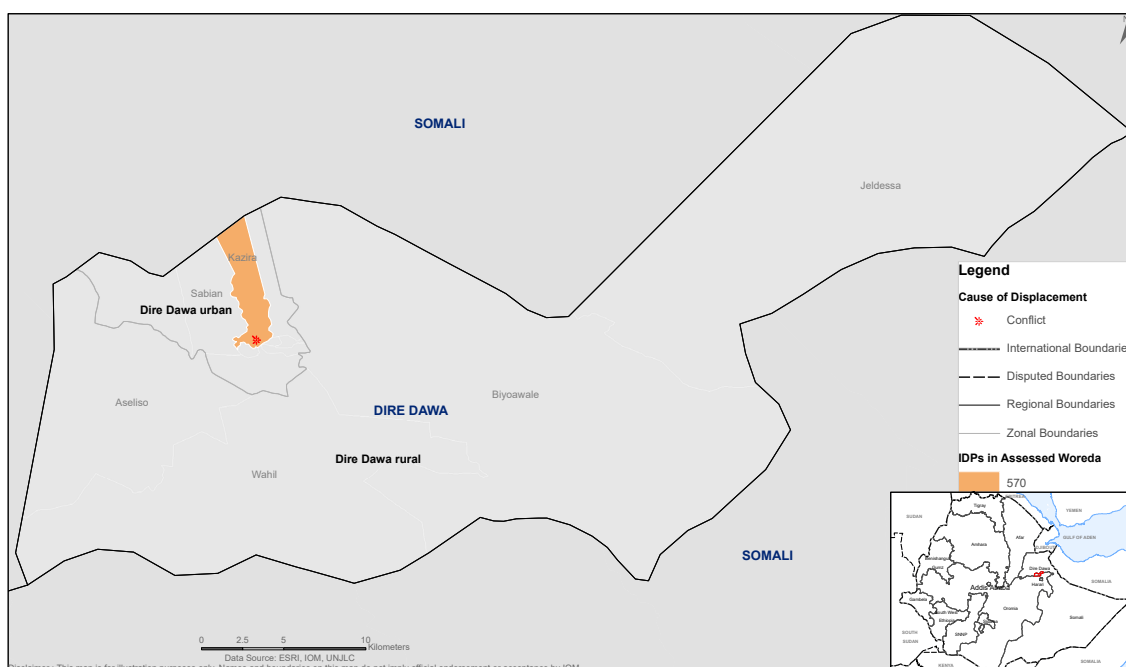


Figure 8: Displacement figures for Dire Dawa in round 28.

## Gambela



### Sex and age breakdown of IDPs



7,009 households comprising 43,809 IDPs were identified in 20 sites in Gambela region. These figures represent an increase of 9,488 IDPs (+27.64%) since round 27 (August — September 2021). The increase is due to seasonal flooding and subsequent new and reopened sites assessed this round. Conflict was the main reason for displacement for an estimated 24,855 IDPs, or 56.73% of the displaced population. The remaining 18,954 IDPs (43.27%) were displaced due to seasonal floods.

## Displacement Caseload and Causes of Displacement in Gambela

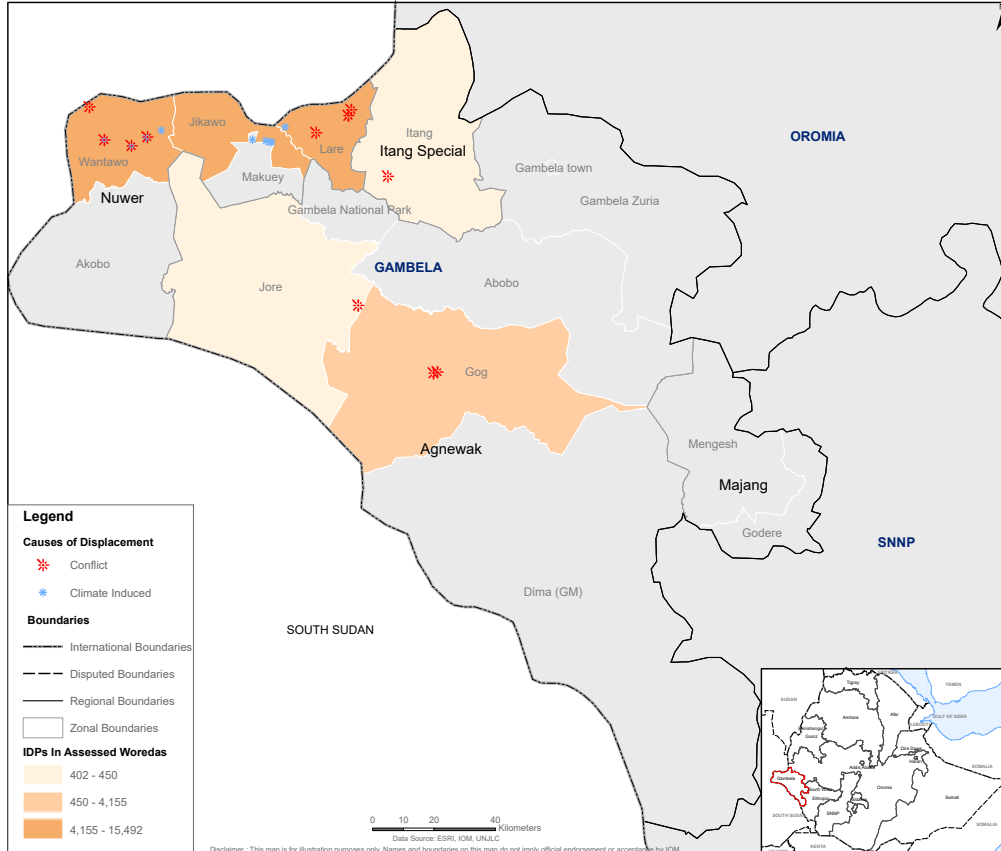
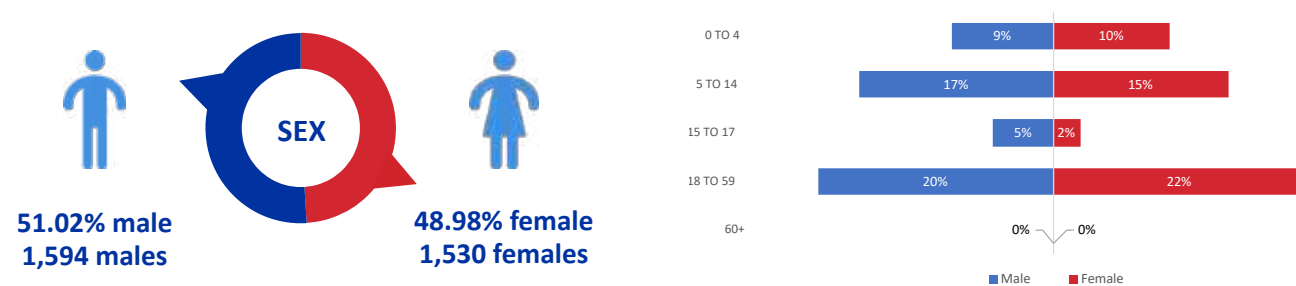


Figure 9: Displacement figures for Gambela region in round 28.

## Harari



### Sex and age breakdown of IDPs



667 households comprising 3,124 IDPs were identified in 9 sites in Harari region. These figures represent a decrease of 1 IDP (-0.03%) since round 27 (August — September 2021). Conflict was the main reason for displacement for an estimated 3,124 IDPs, or 100% of the displaced population.

### Displacement Caseload and Causes of Displacement in Harari

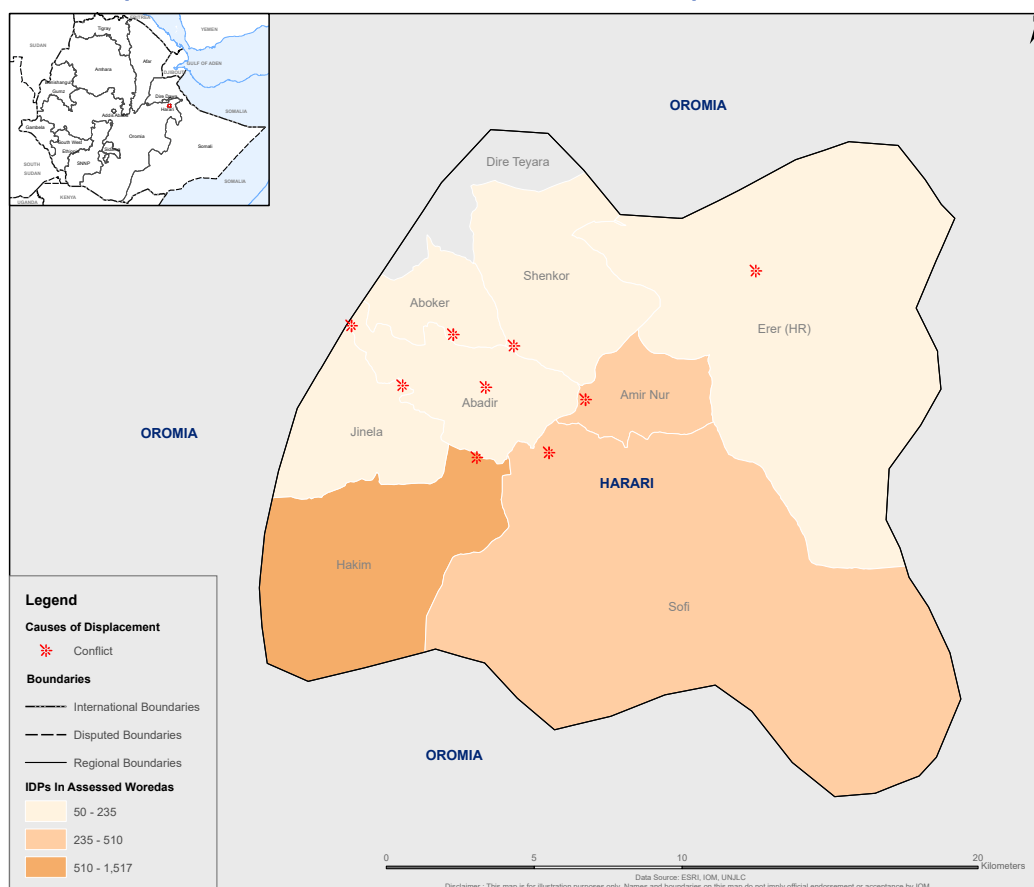


Figure 10: Displacement figures for Harari region in round 28.



## Oromia



### Sex and age breakdown of IDPs



142,642 households comprising 792,686 IDPs were identified in 605 sites in Oromia region. There was an overall increase of 286,553 IDPs (+56.62%) since round 27 (August — September 2021). The increase was partly due to new sites in West Guji and Guji zones due to drought, in West Guji alone there was an increase of +67,200 drought IDPs since last round where many of them came from Borena zone. However, conflict and insecurity in West Wellega, East Wellega, Guji and West Guji zones hampered access which means the regional displacement total should be higher. Conflict was the primary reason for displacement for an estimated 499,301 IDPs (62.99%). 188,657 IDPs (23.80%) were displaced due to other reasons\*, 88,305 IDPs (11.14%) were displaced due to drought, 11,970 IDPs (1.51%) due to seasonal floods, 3,361 IDPs (0.42%) due to flash floods, 960 IDPs (0.12%) due to landslides and 132 IDPs (0.02%) due to fires.

## Displacement Caseload and Causes of Displacement in Oromia

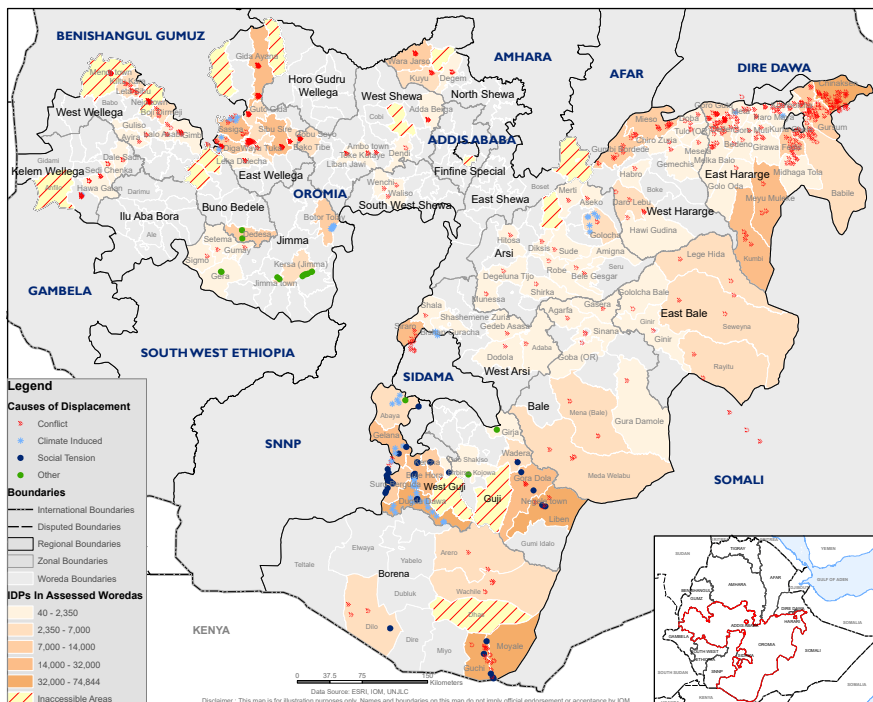


Figure 11: Displacement figures for Oromia region in round 28.

\*Other reasons included displacement due to swampy land, hydropower projects, strong wind, economic factors and absolute poverty.

## Sidama



### Sex and age breakdown of IDPs



6,663 households comprising 40,637 IDPs were identified in 46 sites in Sidama. These figures represent an increase of 34,106 IDPs (+522.22%) since round 27 (August — September 2021). However, this increase in IDP figures is mainly due to full coverage of the region this round. Conflict was the primary reason for displacement for an estimated 39,395 IDPs (96.94%), followed by flash floods which displaced 1,242 IDPs (3.06%).

## Displacement Caseload and Causes of Displacement in Sidama

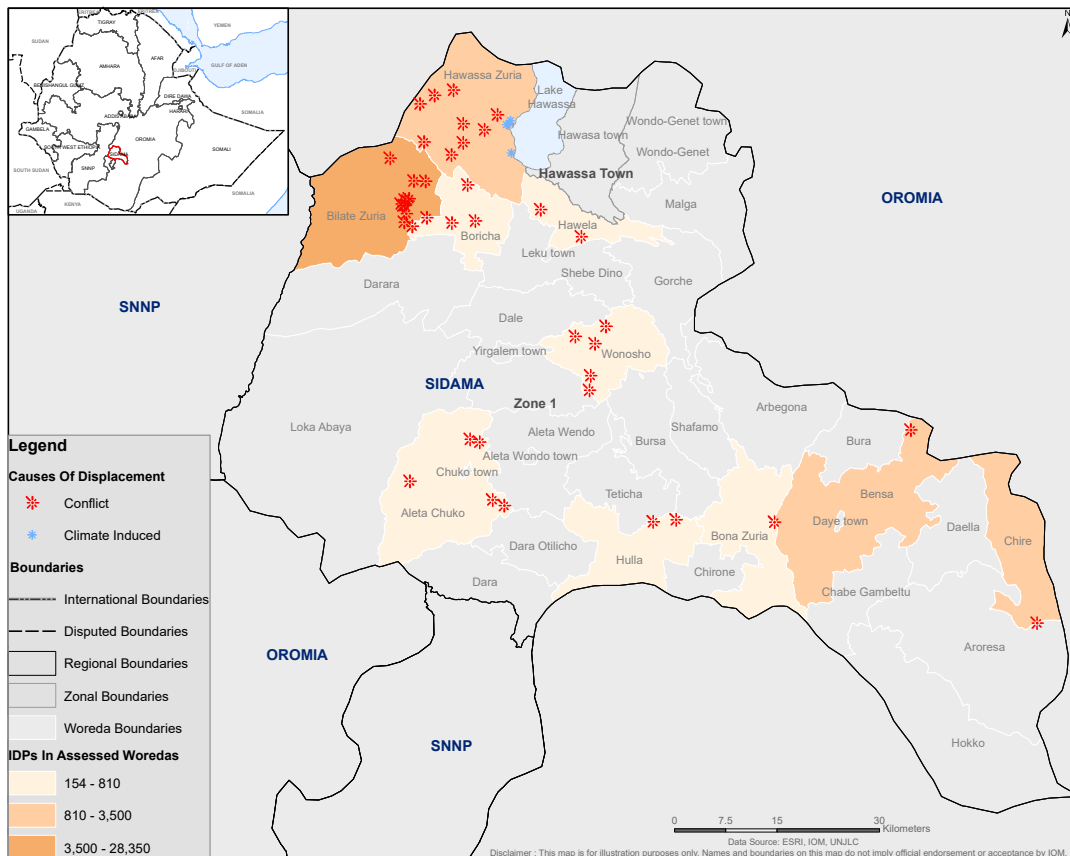
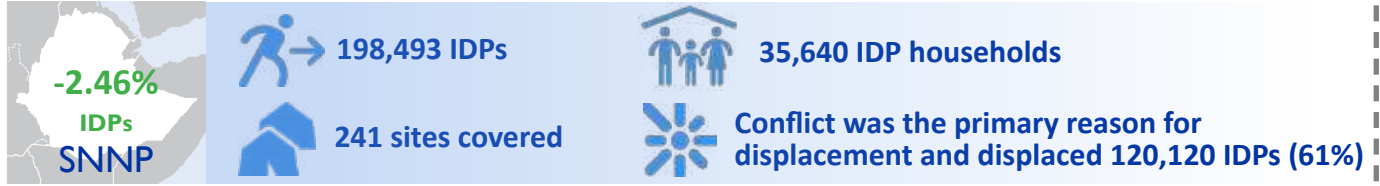
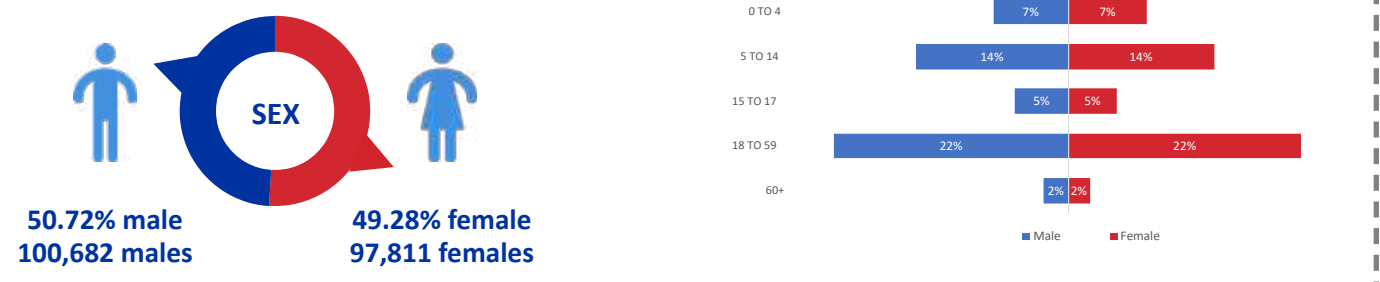


Figure 12: Displacement figures for Sidama region in round 28.

**SNNP**



**Sex and age breakdown of IDPs**



35,640 households comprising 198,493 IDPs were identified in 241 sites in SNNP region. These figures represent a decrease of 5,013 IDPs (-2.46%) since round 27 (August — September 2021). It should be noted that since the previous round, South West Ethiopia Peoples region was formed from territory formally part of SNNP following a referendum in November 2021. Conflict in the region following the decision over the administrative designation of Konso zone continued and escalated in 2021. Conflict continued to be the primary reason for displacement and displaced 120,120 IDPs (60.52%), followed by seasonal floods which displaced 29,587 IDPs (14.91%), flash floods which displaced 29,167 IDPs (14.69%), landslides which displaced 19,495 IDPs (9.82%) and fire which displaced 124 IDPs (0.06%).

**Displacement Caseload and Causes of Displacement in SNNP**

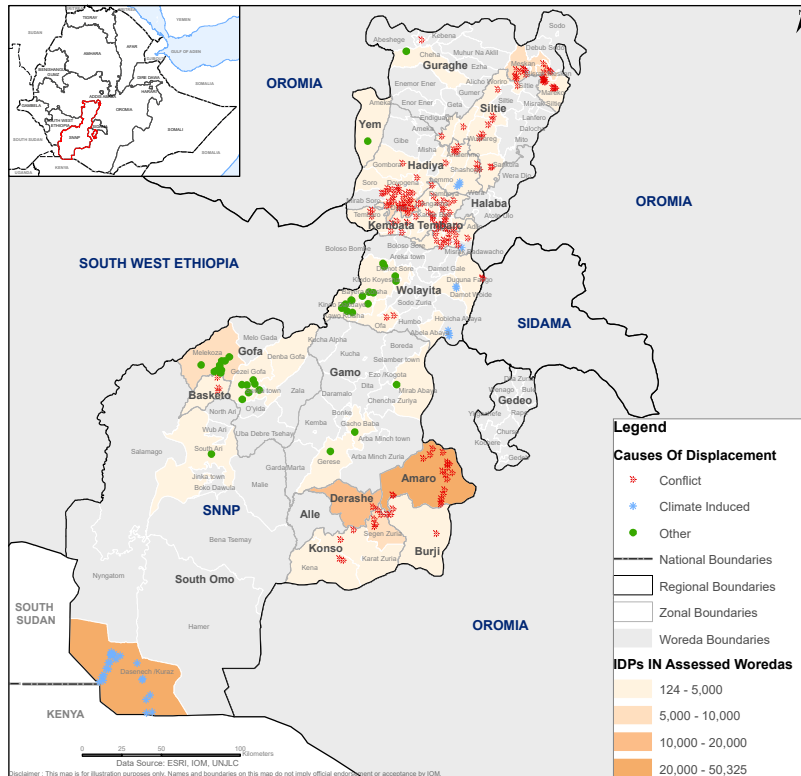
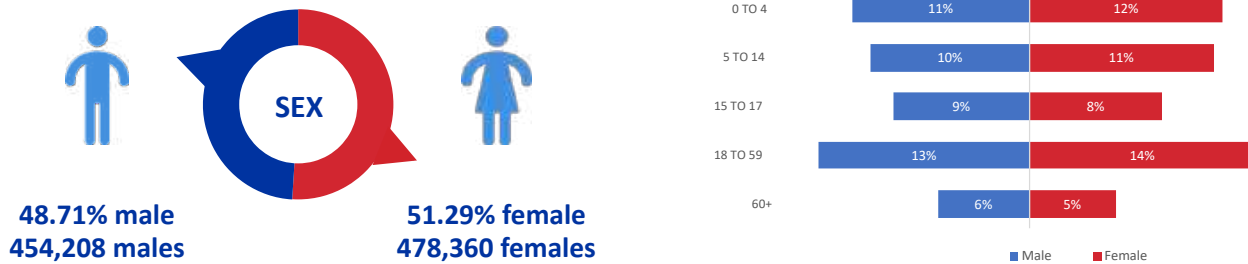


Figure 13: Displacement figures for SNNP region in round 28.

## Somali



### Sex and age breakdown of IDPs



157,227 households comprising 932,568 IDPs were identified in 456 sites in Somali region. These figures represent an increase of 61,392 IDPs (+7.05%) since round 27 (August — September 2021). This increase was largely due to the opening of 19 new IDP sites in Dawa, Afder and Liban zones mainly due to drought. In Dawa zone there was an increase of +25,686 IDPs displaced due to drought since the last round, in Afder zone it was +25,474 IDPs and in Liban zone +6,019 IDPs. Despite this, conflict was the main reason for displacement and displaced an estimated 517,750 IDPs (55.52%), while drought displaced 325,505 IDPs (34.91%), seasonal floods displaced 59,629 IDPs (6.39%), flash floods displaced 29,388 IDPs (3.15%) and landslides displaced 296 IDPs (0.03%).

## Displacement Caseload and Causes of Displacement in Somali

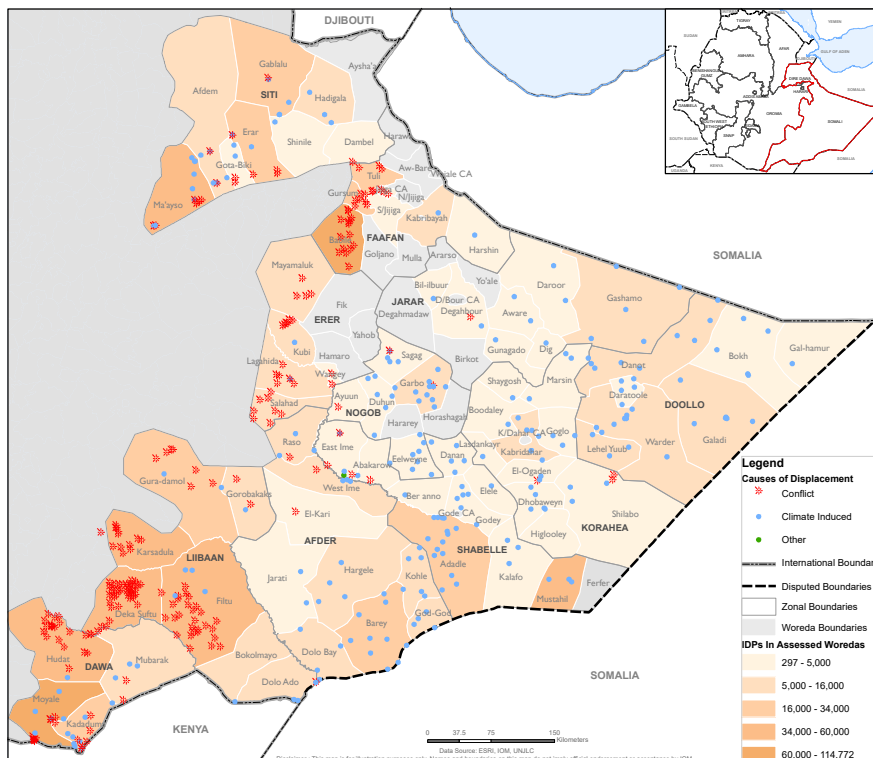


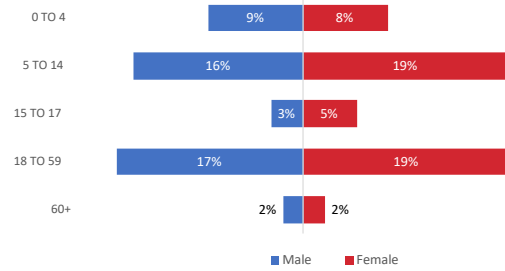
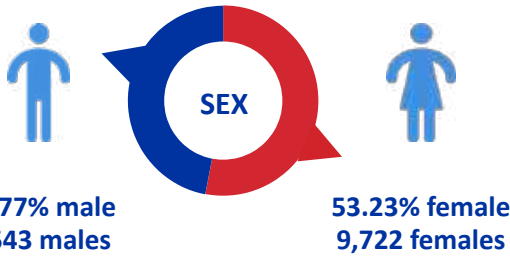
Figure 14: Displacement figures for Somali region in round 28.



### South West Ethiopia Peoples



#### Sex and age breakdown of IDPs



3,368 households comprising 18,265 IDPs were identified in 27 sites in South West Ethiopia Peoples region. The region was formed after a referendum in November 2021. Conflict was the primary cause of displacement for an estimated 17,726 IDPs, or 97.05% of the displaced population. This is followed by landslides which displaced 539 IDPs (2.95%).

### Displacement Caseload and Causes of Displacement in South West Ethiopia Peoples

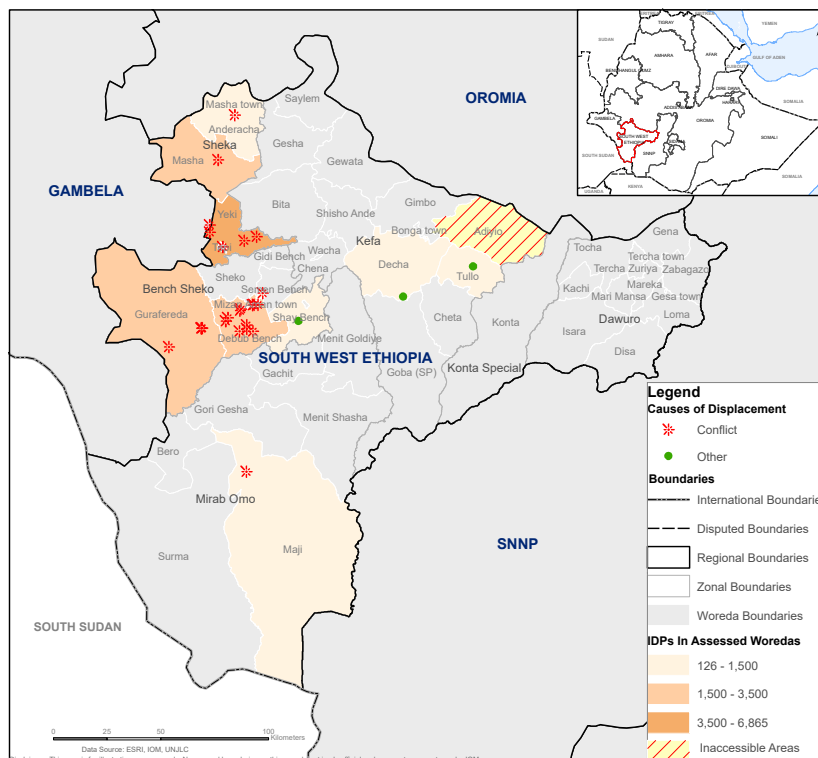


Figure 15: Displacement figures for South West Ethiopia Peoples region in round 28.

\*The administrative breakdown of zones and woredas in Southwest Ethiopia Peoples region is a temporary arrangement as agreed with Southwest Ethiopia Peoples Regional Disaster Risk Management Commission until all administrative areas and boundaries have been finalized by the regional government.

**Emergency Site Assessment**

**Tigray**



**Sex and age breakdown of IDPs**



Due to a lack of fuel and cash in Tigray region, a new round of Emergency Site Assessment has not been conducted in the region, so the below information corresponds to Emergency Site Assessment round 8 which was mainly conducted in August 2021. As of Emergency Site Assessment (ESA) round 8, 386,741 households comprising 1,814,284 IDPs were identified in 581 accessible sites in Tigray region due to the Northern Ethiopia Crisis. Due to conflict in Western zone and parts of Southern zone, sites in these areas could not be covered. In the bordering areas of North Western and Eastern zones there were also access constraints due to conflict and insecurity issues. The decrease in the number of IDPs was mainly due to returns, as well as the door-to-door headcount verification exercise in Shire which took place from 29 September to 4 October 2021. Notably, though there has not been a new round of ESA, the number of IDPs in Tigray has dropped significantly due to returns. Conflict was the main reason cited for displacement in all sites assessed (100%).

**Displacement Caseload and Causes of Displacement in Tigray**

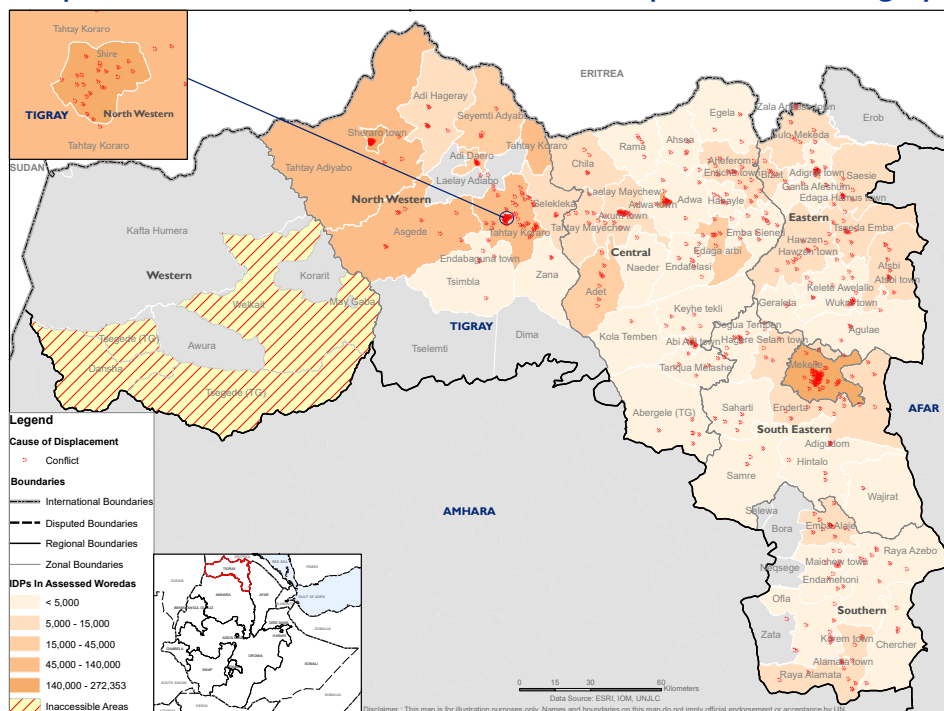


Figure 16: Displacement figures for Tigray region are based on Emergency Site Assessment round 8 (mainly in August 2021).

\*The decrease in IDPs in Tigray region was mainly due to returns, as well as the door-to-door headcount verification exercise in Shire.

\*\*Kindly note that the sex breakdown only applies to IDPs tracked in round 8 and were displaced after the crisis started in November 2020.

## **Section 2**

# **Village Assessment Survey (VAS)**

## KEY FINDINGS — VILLAGE ASSESSMENT SURVEY



2,378 villages covered



459 inaccessible villages

### Population Breakdown & Initial Causes of Displacement



2,848,463 returning IDPs\*  
(623,341 households)



18,797 returned migrants



+85% increase in returning IDPs  
(There were 1,541,284 returning IDPs in VAS round 10)



1,610,757 host community members (320,822 households)

**1**



2,689,407 returning IDPs (94.4%) were initially displaced by conflict in 2,263 villages

**2**



54,129 returning IDPs (1.9%) were initially displaced by seasonal floods in 48 villages

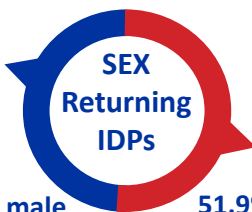
**3**



51,540 returning IDPs (1.8%) were initially displaced by drought in 3 villages



48.1% male  
1,371,527 males



51.9% female  
1,476,936 females

Other reasons for initial displacement included flash floods (51,185 returning IDPs), fire (1,362 returning IDPs) and landslides (2,300 returning IDPs).

### Top 3 Zones With the Highest Returning IDP Figures

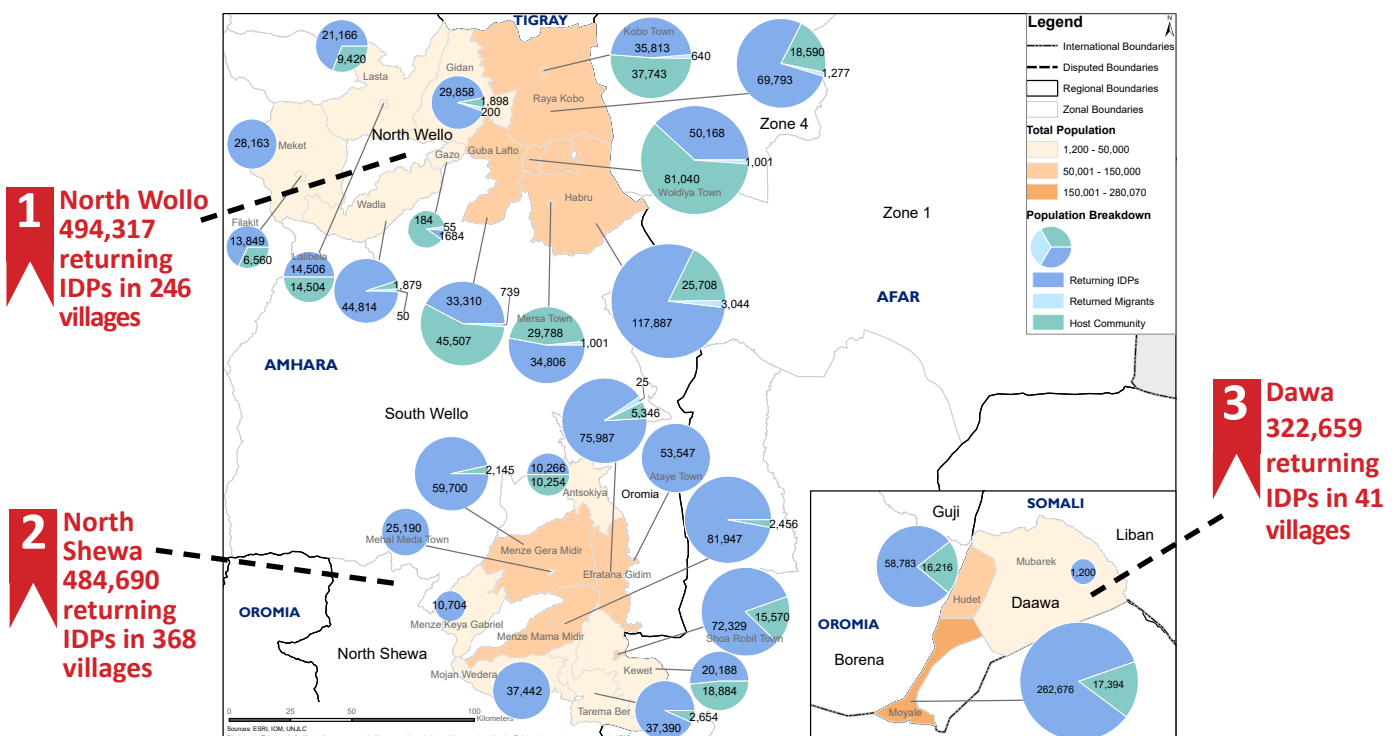


Figure 17: Top 3 zones with the highest number of returning IDPs.

\*This figure does not include Tigray region as the Village Assessment Survey could not be done this round due to a lack of cash and fuel in the region.

# METHODOLOGY

The Village Assessment Survey (VAS) was used for the first time in IOM Ethiopia in July 2019 in response to the government-led return movement in an effort to capture return trends and sectoral needs in areas reporting high return concentrations. This is the 11th round of VAS data collection.

VAS targets villages with reported returns equal to or greater than 5 returning IDP households, and collects demographic data on returning IDPs, resettled IDPs, returned migrants and host community members. The purpose of VAS is to assess the capacity of villages to absorb returns through the availability of services with a focus on livelihoods and reintegration.

DTM works closely with national, zonal and woreda level officials who serve as key informants in identifying villages with high returns. At the village level, DTM collects its data through focus group discussions, key informants and through direct observation. Focus



Data collection period:  
 1 December 2021 — 15 February 2022

groups are made up of 7 individuals whereby each focus group must comprise 2 individuals over the age of 65 years of age, 1 individual under 18 years of age, 2 females and at least 1 government official (i.e. kebele administrator, village leader etc.). In villages where they are present, all 4 population categories, namely returning IDPs, resettled IDPs, returned migrants and host community members must also be represented in the focus group. This lower limit of 7 individuals is employed to ensure that COVID-19 prevention measures, such as social distancing, can be observed. DTM teams ensure that they are equipped with personal protective equipment (PPE) during data collection.

All VAS data is collected in close collaboration with the Ethiopia Disaster Risk Management Commission (EDRMC). All data is electronically collected through survey forms designed in Kobo. The data collection period for this round of VAS was 1 December 2021 to 15 February 2022.

## Coverage of this round

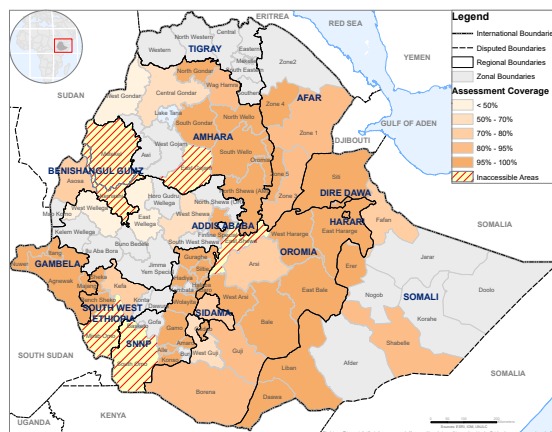
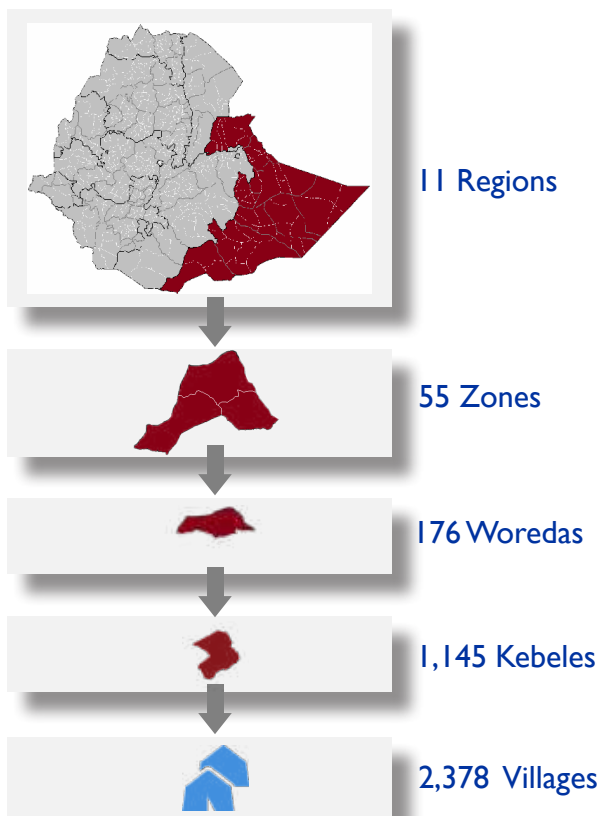


Figure 18: Percentage of villages assessed by DTM at zonal level for round 11 of VAS.



459 Inaccessible Villages

For round 11 of VAS, a total of 459 villages could not be accessed. 416 villages were inaccessible due to insecurity issues mainly in West Guji, Kemashi, Metekel, East Wallaga, West Wallega and East Shewa zones. 19 villages could not be accessed due to road inaccessibility issues mainly in Central Gonder, Awsi (Zone 1), East Hararge, Alle Especial Woreda, Keffa and Shabelle zones, while the remaining 24 villages in East Shewa zone were inaccessible due to operational interference during the time of data collection.



# OVERVIEW OF RETURNS

## National Level

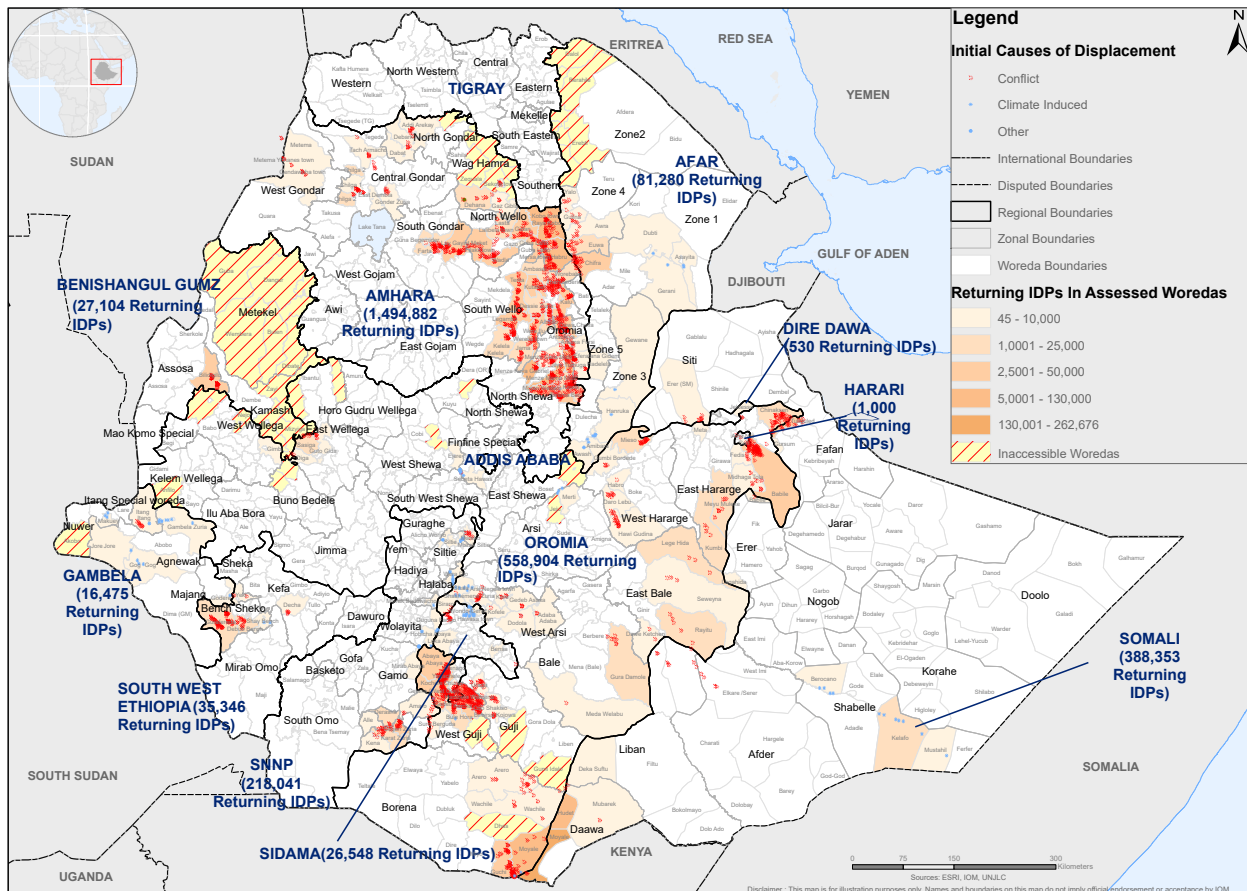


Figure 19: The return caseload based on data collected from the Village Assessment Survey December 2021 to February 2022.

According to the data collected between December 2021 and February 2022, there were an estimated 2.8 million returning IDPs (623,341 households) across 2,378 villages in Ethiopia. The large number of returning IDPs is mainly due to government-led return movements which began in April 2019 and returns mainly in Amhara region due to the reduction in armed conflict in January 2022.

The largest returning IDP caseload is in Amhara region with an estimated total of 1,494,882 returning IDPs (384,057 households), as captured through the coverage of 1,164 villages. Amhara witnessed an increase of 1,276,473 returning IDPs (+584%). However, 40 villages could not be accessed due to security and road inaccessibility issues mainly in Wag Hamra, Central Gonder and West Gonder zones. Conflict was the cause of initial displacement for a majority of returning IDPs in 1,161 villages (99.9%).

The region hosting the second largest number of returning IDPs is Oromia region with an estimate of 558,904 returning IDPs (104,075 households) in 668

villages. However, it should be noted that 236 villages could not be covered due to road inaccessibility, security issues and operational interference primarily in West Guji, East Wallaga and East Shewa zones. Conflict was the main reason for initial displacement for returning IDPs in 646 villages (98.1%).

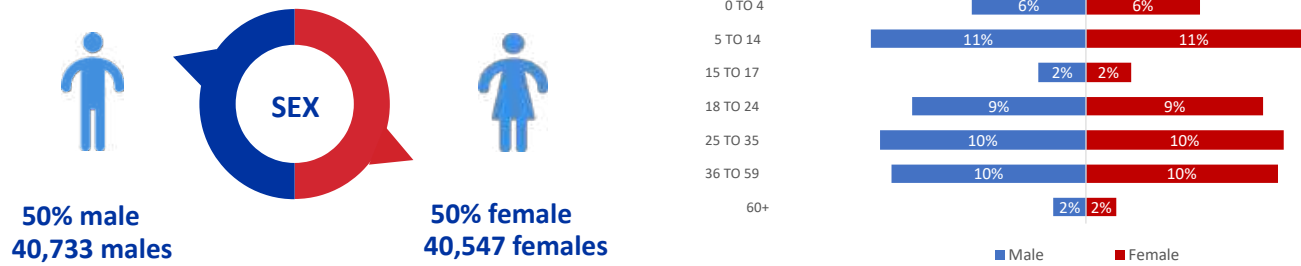
The region hosting the third largest number of returning IDPs is Somali region with an estimated 388,353 returning IDPs (64,719 households). There was a slight decrease of 3,933 returning IDPs (-1.1%) since the previous round. Conflict was the main reason for initial displacement for returning IDPs in 83 villages (81.2%).

The gender breakdown for returning IDPs is 1,371,527 males (48.1%) and 1,476,936 females (51.9%). 2.6 million returning IDPs (94.4%) were initially displaced by conflict, 54,129 returning IDPs (1.9%) were initially displaced by seasonal floods and 51,540 returning IDPs were initially displaced by drought (1.8%).

## Afar



### Sex and age breakdown of returning IDPs\*



13,618 households comprising 81,280 returning IDPs were identified in 79 villages in Afar region. These figures represent an increase of 65,724 returning IDPs (+422%) since the previous round 10 (August — September 2021). The increase is mainly due to the reduction in armed conflict in Zone 4 (Fenti) and Zone 1 (Aws) allowing for an increase in coverage; the highest concentration of returns are seen in Zone 4 (Fenti). The majority of returning IDPs in 35 villages (44%) arrived between 1 and 3 months ago, followed by less than 1 month in 30 villages (38%). Conflict was the main reason for initial displacement for returning IDPs in 65 villages (82%) followed by flash floods in 14 villages (18%).

## Returnee Caseload and Causes of Initial Displacement in Afar

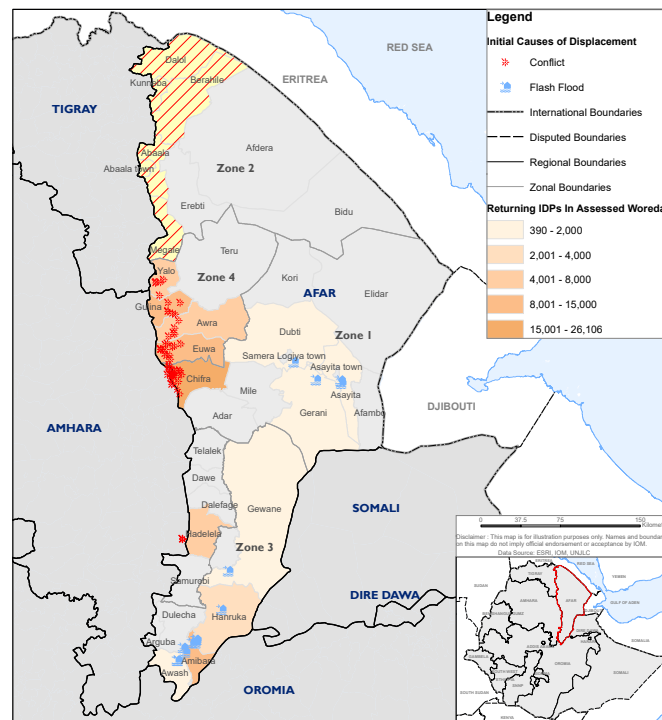
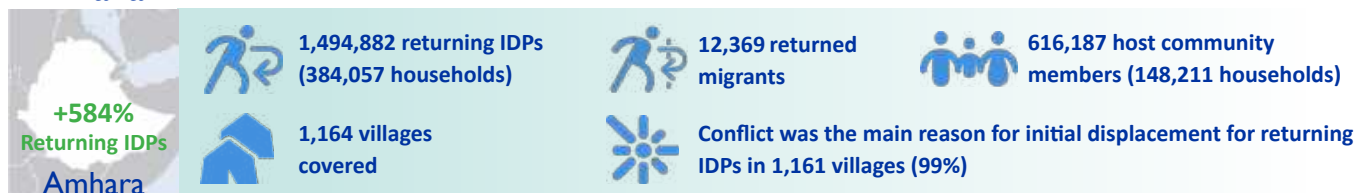


Figure 20: Returning IDP figures for Afar in VAS round 11.

\*Please note that the sex and age disaggregation for returning IDPs is an estimate based on the percentage of male and female returning IDPs and based on the percentage of returning IDPs at each age bracket. This is calculated at village level.

## Amhara



### Sex and age breakdown of returning IDPs\*



384,057 households comprising 1,494,882 returning IDPs were identified in 1,164 villages in Amhara region. These figures represent an increase of 1,276,473 returning IDPs (+584%) since the previous round 10 (August — September 2021). The increase is mainly due to mass returns in North Wollo (494,317 returning IDPs), North Shewa (484,690 returning IDPs) and South Wollo (294,774 returning IDPs) zones following the withdrawal of armed conflict in these areas. Many of the returning IDPs were first displaced from Wag Hamra and North Wollo zones to South Wollo zone and then as conflict continued to move south they were secondarily displaced to North Shewa zone which is consistent with the high returns in North Wollo zone. Most of Wag Hamra zone remained inaccessible this round due to ongoing conflict. The majority of returning IDPs in 898 villages (77%) arrived between 1 and 3 months ago followed by less than one month in 118 villages (10%). Conflict was the cause of initial displacement for a majority of returning IDPs in 1,161 villages (99%) followed by fire in 1 village (<1%), flash floods in 1 village (<1%) and seasonal floods in 1 village (<1%).

## Returnee Caseload and Causes of Initial Displacement in Amhara

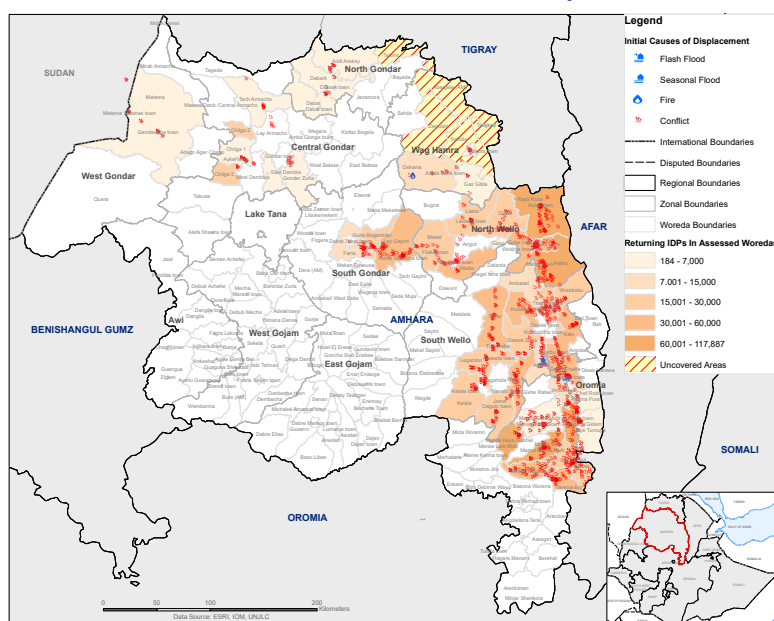


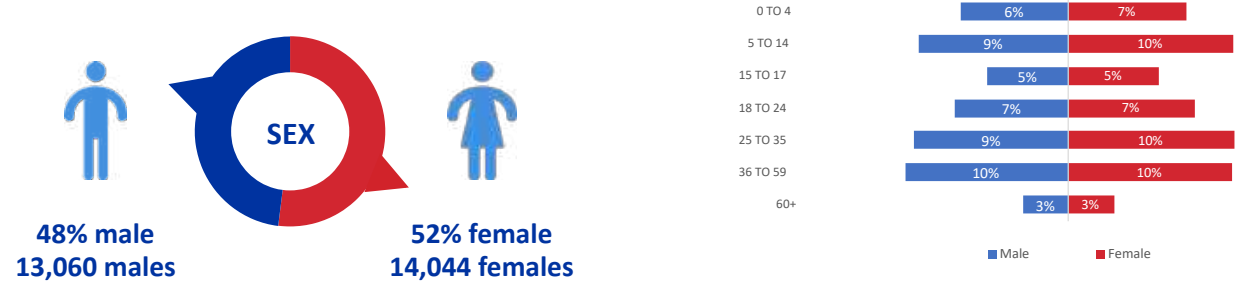
Figure 21: Returning IDP figures for Amhara in VAS round 11.

\*Please note that the sex and age disaggregation for returning IDPs is an estimate based on the percentage of male and female returning IDPs and based on the percentage of returning IDPs at each age bracket. This is calculated at village level.

## Benishangul Gumz



### Sex and age breakdown of IDPs



5,509 households comprising 27,104 returning IDPs were identified in 43 villages in Benishangul Gumz region. The region was inaccessible in round 27, but these figures represent an increase of 24,807 IDPs since round 26 (June — July 2021). Despite an increase in coverage, sites in Kemashi and Metekel zones could not be covered due to insecurity. Therefore, it should be noted that the return figures for Benishangul Gumz region should be higher. Conflict was the main reason for initial displacement for returning IDPs in all 43 villages (100%).

## Returnee Caseload and Causes of Initial Displacement in Benishangul Gumz

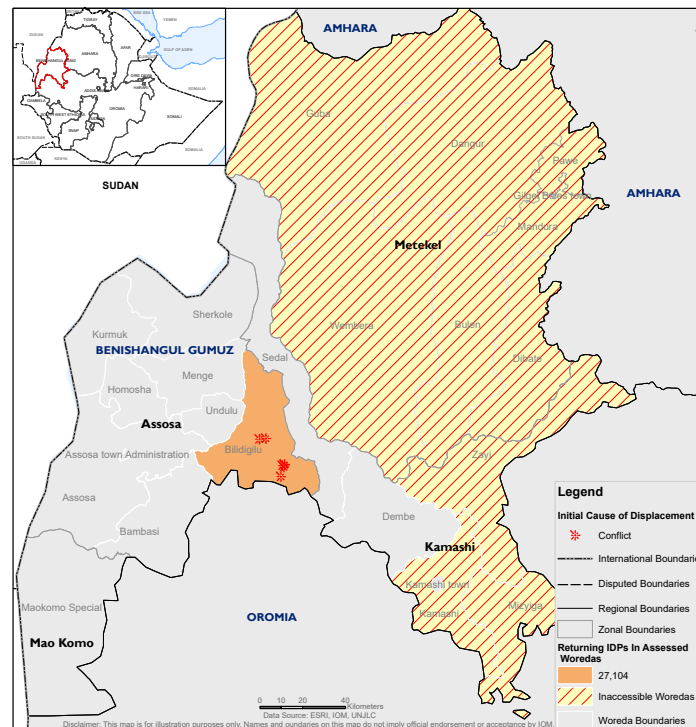
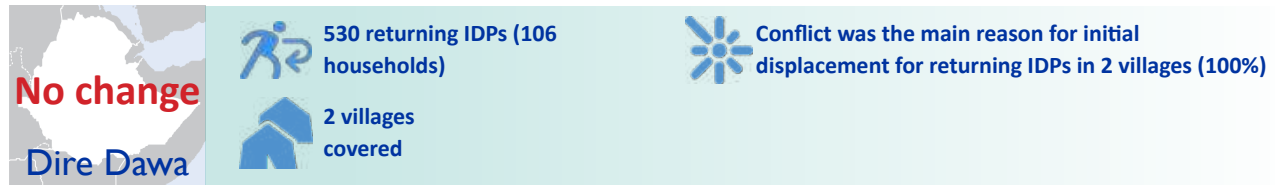


Figure 22: Returning IDP figures for Benishangul Gumz in VAS round 11.

\*Please note that the sex and age disaggregation for returning IDPs is an estimate based on the percentage of male and female returning IDPs and based on the percentage of returning IDPs at each age bracket. This is calculated at village level.

### Dire Dawa



### Sex and age breakdown of IDPs



106 households comprising 530 returning IDPs were identified in 2 villages in Dire Dawa. No IDPs or host community members were observed in these 2 villages. Conflict was the cause of initial displacement for a majority of returning IDPs in both villages (100%).

## Returnee Caseload and Causes of Initial Displacement in Dire Dawa

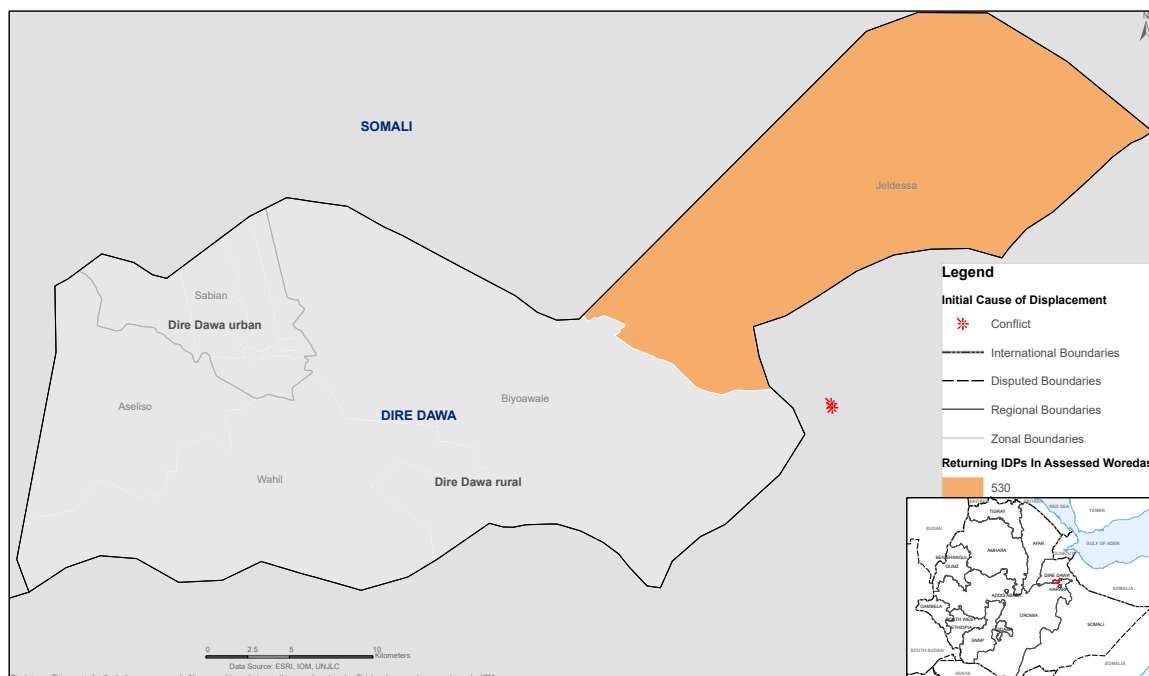


Figure 23: Returning IDP figures for Dire Dawa in VAS round 11.

\*Please note that the sex and age disaggregation for returning IDPs is an estimate based on the percentage of male and female returning IDPs and based on the percentage of returning IDPs at each age bracket. This is calculated at village level.



## Gambela



### Sex and age breakdown of IDPs



3,333 households comprising 16,475 returning IDPs were identified in 27 villages in Gambela. This is an increase of 7,278 returning IDPs (+79.13%) since the previous round 10 (August — September 2021). A majority of returning IDPs in 13 villages (48.15%) arrived between 1 and 3 months ago followed by a majority of returning IDPs in 10 villages (37.04%) who arrived more than 6 months ago. Seasonal floods were the cause of initial displacement for a majority of returning IDPs in 18 villages (66.67%) followed by conflict in 9 villages (33.33%).

## Returnee Caseload and Causes of Initial Displacement in Gambela

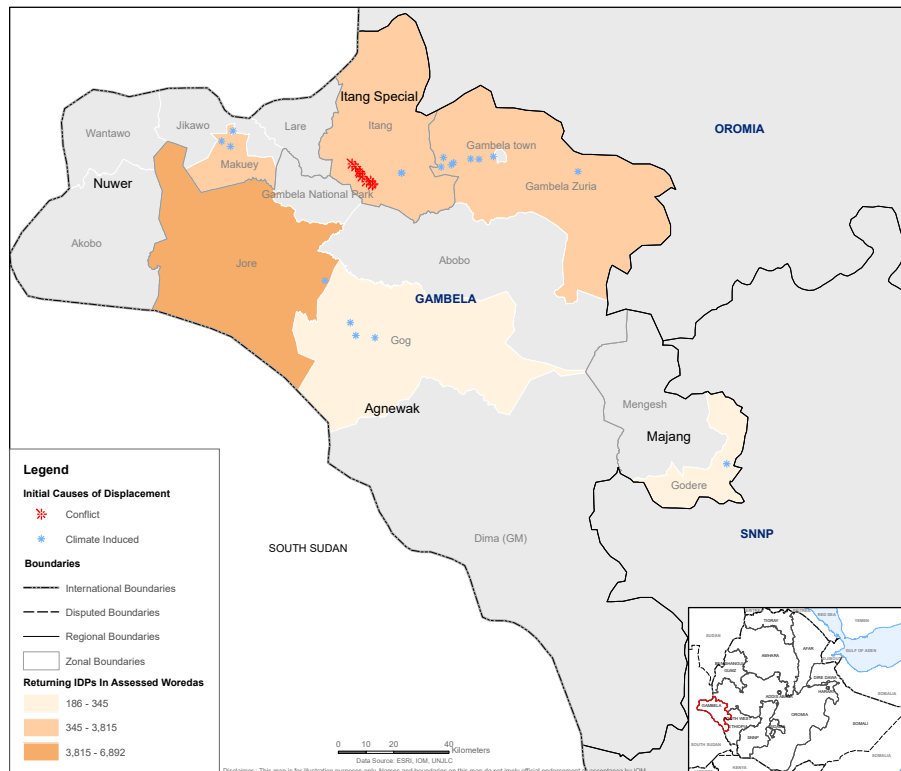
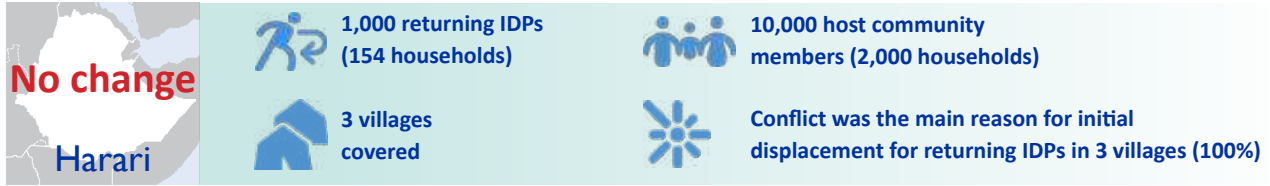
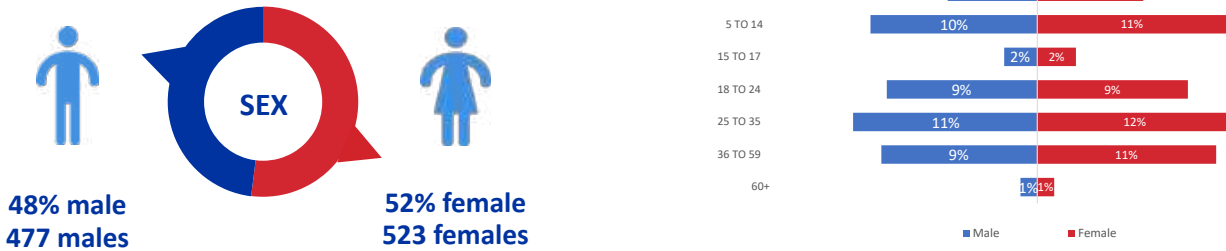


Figure 24: Returning IDP figures for Gambela in VAS round 11.

### Harari



### Sex and age breakdown of IDPs



154 households comprising 1,000 returning IDPs were identified in 3 villages in Harari region. There was no change in the number of returning IDPs since the previous round 10 (August — September 2021). The majority of returning IDPs in 3 villages (100%) arrived more than 6 months ago. Conflict was the cause of initial displacement for a majority of returning IDPs in all 3 villages (100%).

### Returnee Caseload and Causes of Initial Displacement in Harari

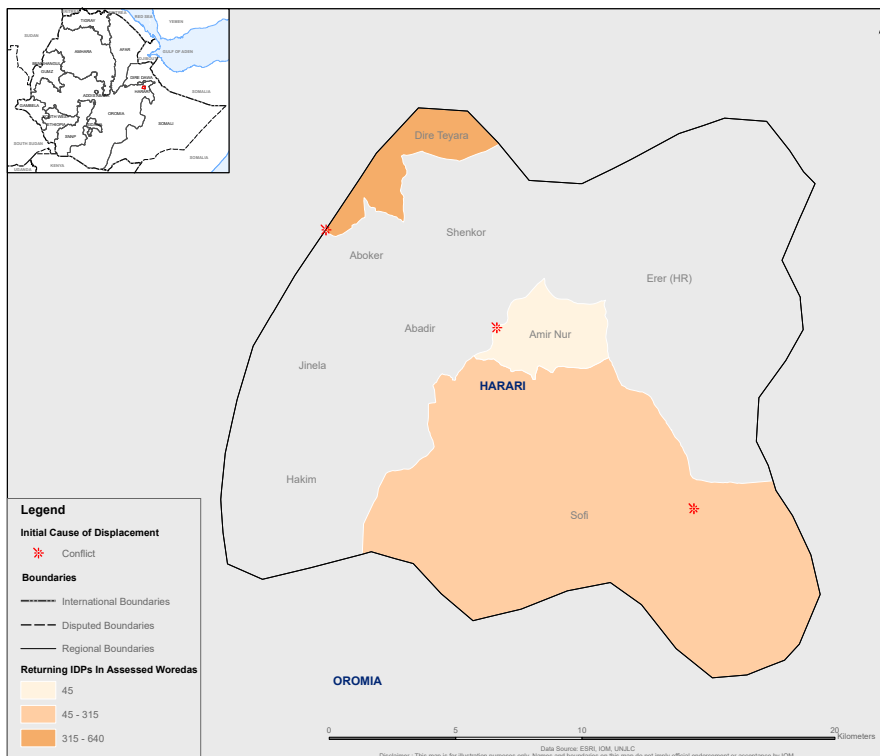


Figure 25: Returning IDP figures for Harari in VAS round 11.

\*Please note that the sex and age disaggregation for returning IDPs is an estimate based on the percentage of male and female returning IDPs and based on the percentage of returning IDPs at each age bracket. This is calculated at village level.

## Oromia



### Sex and age breakdown of IDPs



104,075 households comprising 558,904 returning IDPs were identified in 668 villages in Oromia region. There was a decrease of 94,645 returning IDPs (-14.48%) since VAS round 10 (August — September 2021). The decrease was primarily due to operational constraints particularly in West Guji, East Wellega, East Shewa and West Wellega zones. The majority of returning IDPs in 656 villages (98.20%) arrived more than 6 months ago. Conflict was the cause of initial displacement for a majority of returning IDPs in 646 villages (96.70%) followed by flash floods in 16 villages (2.40%) and seasonal floods in 6 villages (.90%).

## Returnee Caseload and Causes of Initial Displacement in Oromia

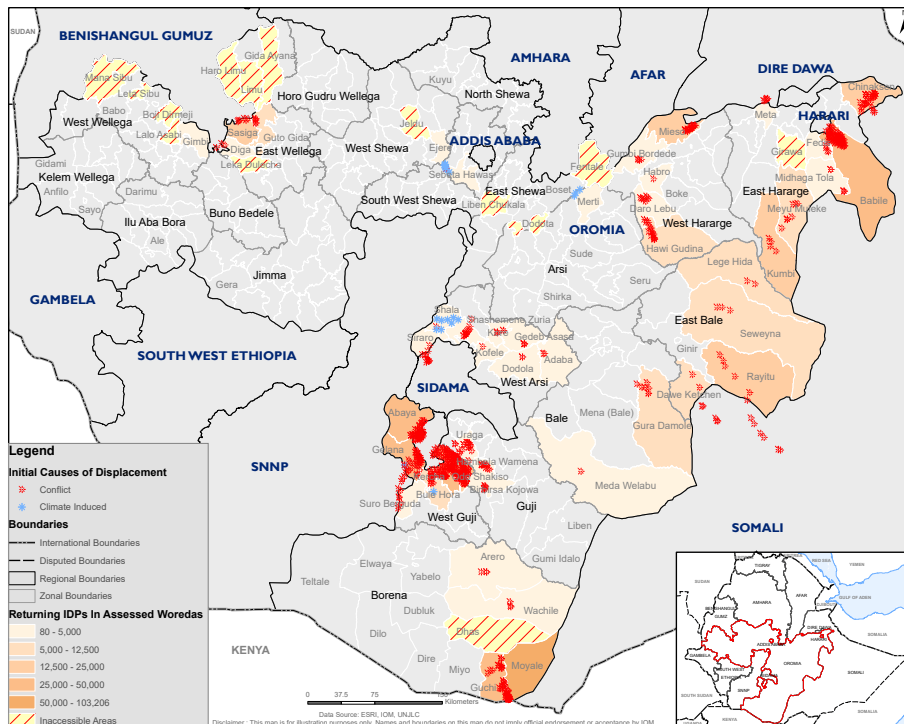


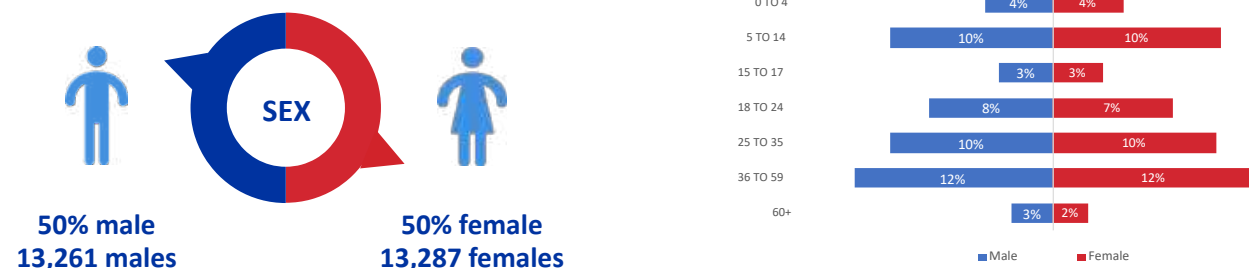
Figure 26: Returning IDP figures for Oromia region in VAS round 11.

\*Please note that the sex and age disaggregation for returning IDPs is an estimate based on the percentage of male and female returning IDPs and based on the percentage of returning IDPs at each age bracket. This is calculated at village level.

## Sidama



### Sex and age breakdown of IDPs



5,024 households comprising 26,548 returning IDPs were identified in 20 villages in Sidama region. This represents an increase of 613 returning IDPs (+2.36%) since the previous round 10 (August — September 2021). Returning IDPs in 17 villages (85.00%) arrived more than six months ago, while in 2 villages (10.00%) the returning IDPs arrived between 4-6 months and in 1 village (5.00%) between 1-3 months. Flash floods were the initial reason for displacement for returning IDPs in 19 villages (95.00%) followed by conflict in 1 village (5.00%).

## Returnee Caseload and Causes of Initial Displacement in Sidama

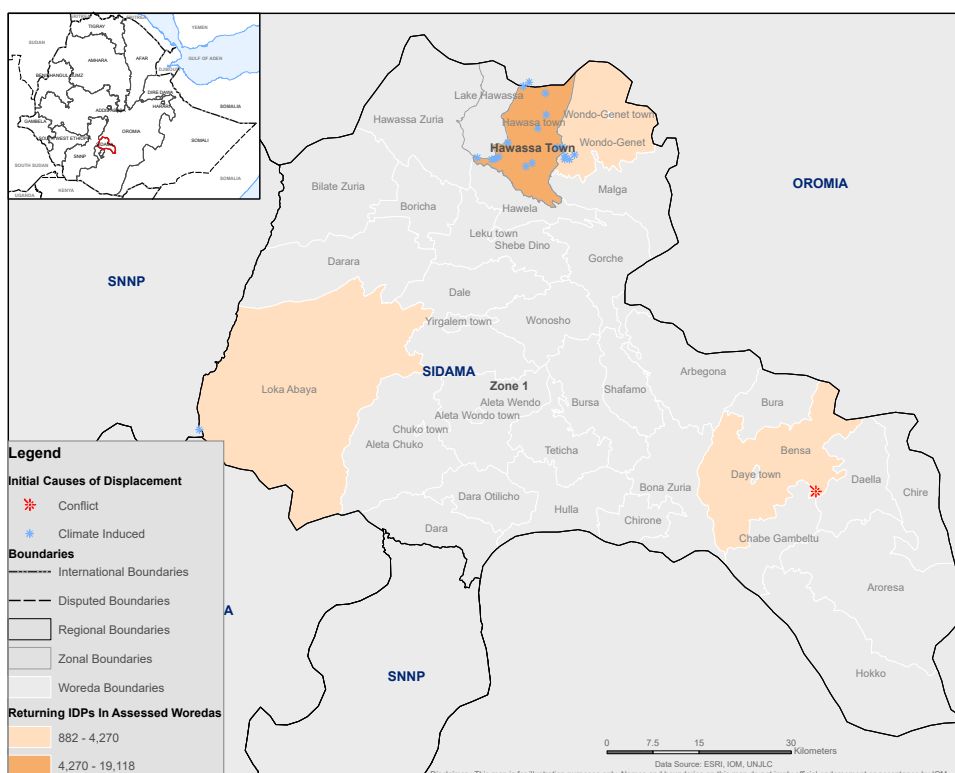


Figure 27: Returning IDP figures for Sidama region in VAS round 11.

\*Please note that the sex and age disaggregation for returning IDPs is an estimate based on the percentage of male and female returning IDPs and based on the percentage of returning IDPs at each age bracket. This is calculated at village level.

**SNNP**



**Sex and age breakdown of IDPs**



36,136 households comprising 218,041 returning IDPs were identified in 184 villages in SNNP region. There was a decrease of 6,781 returning IDPs (-3.02%) since round 10 (August — September 2021). The slight decrease is due to return operations by both the regional and zonal governments in Konso zone and Derashe Special Woreda. A majority of returning IDPs in 172 (93.48%) villages returned to their villages more than 6 months ago. Conflict was the primary reason for initial displacement for returning IDPs in 161 villages (87.50%), followed by seasonal floods in 11 villages (5.98%), flash floods in 8 villages (4.35%), landslides in 3 villages (1.63%) and fire in 1 village (0.54%).

**Returnee Caseload and Causes of Initial Displacement in SNNP**

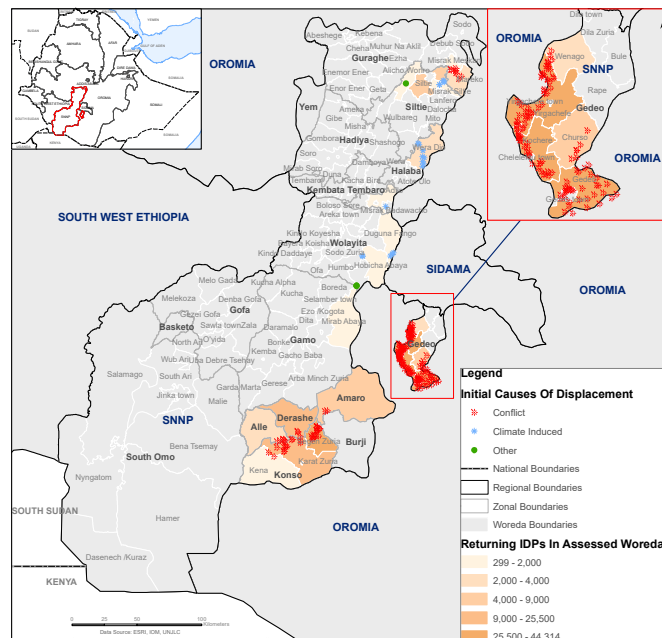


Figure 28: Returning IDP figures for SNNP region in VAS round 11.

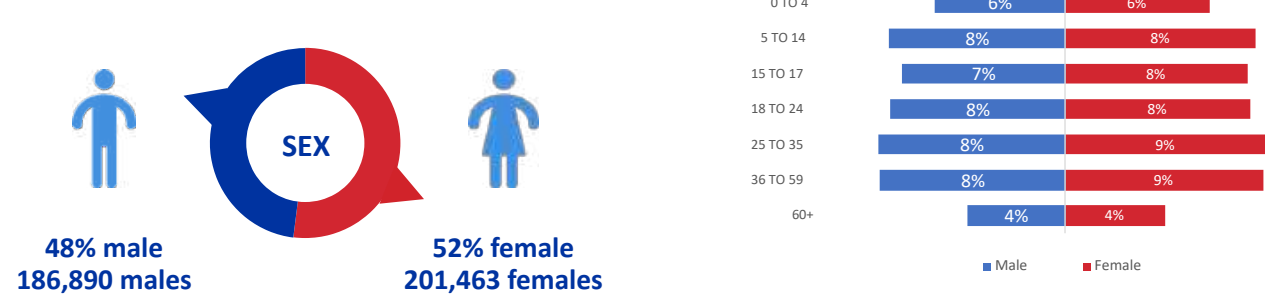
\*Please note that the sex and age disaggregation for returning IDPs is an estimate based on the percentage of male and female returning IDPs and based on the percentage of returning IDPs at each age bracket. This is calculated at village level.



## Somali



### Sex and age breakdown of IDPs



64,719 households comprising 388,353 returning IDPs were identified in 97 villages in Somali region. There was a decrease of 3,933 returning IDPs (-1.00%) since the previous round 10 (August — September 2021). The majority of returning IDPs in all 97 villages (100%) arrived more than 6 months ago. Conflict was the main reason for initial displacement for returning IDPs in 83 villages (85.57%) followed by seasonal floods in 11 villages (11.34%) and drought in 3 villages (3.09%).

## Returnee Caseload and Causes of Initial Displacement in Somali

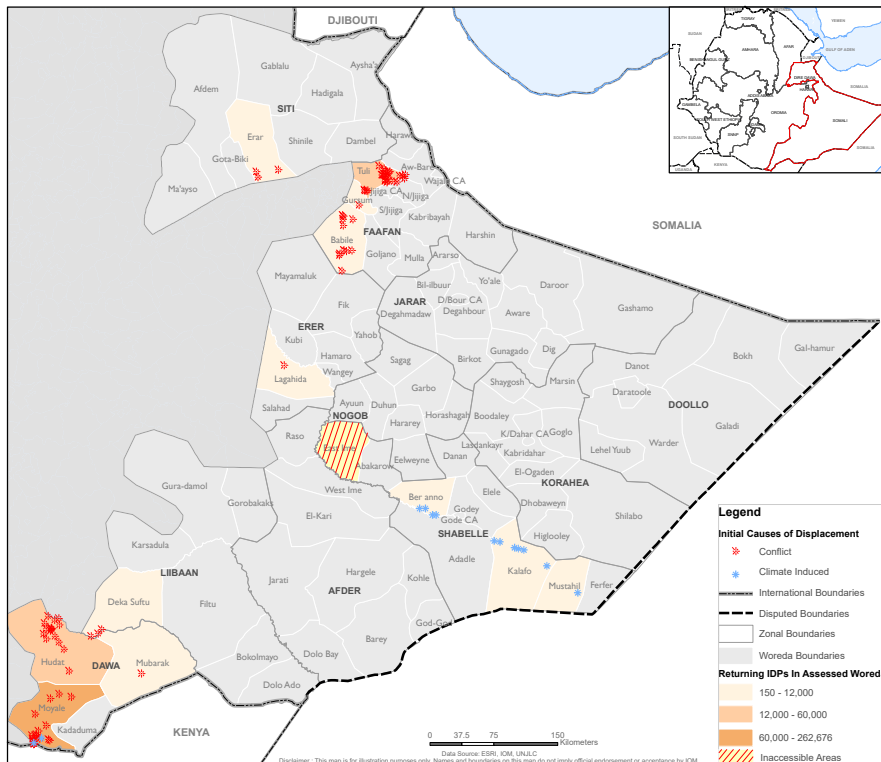


Figure 29: Returning IDP figures for Somali region in VAS round 11.

\*Please note that the sex and age disaggregation for returning IDPs is an estimate based on the percentage of male and female returning IDPs and based on the percentage of returning IDPs at each age bracket. This is calculated at village level.

### South West Ethiopia Peoples



### Sex and age breakdown of IDPs



6,610 households comprising 35,346 IDPs were identified in 91 sites in South West Ethiopia Peoples region. The majority of returning IDPs in 72 villages (79.12%) arrived between 1 and 3 months ago. Conflict was the main reason for initial displacement for returning IDPs in 89 villages (97.80%) followed by seasonal floods in 1 village (1.10%) and flash floods in 1 village (1.10%).

### Returnee Caseload and Causes of Initial Displacement in South West Ethiopia Peoples

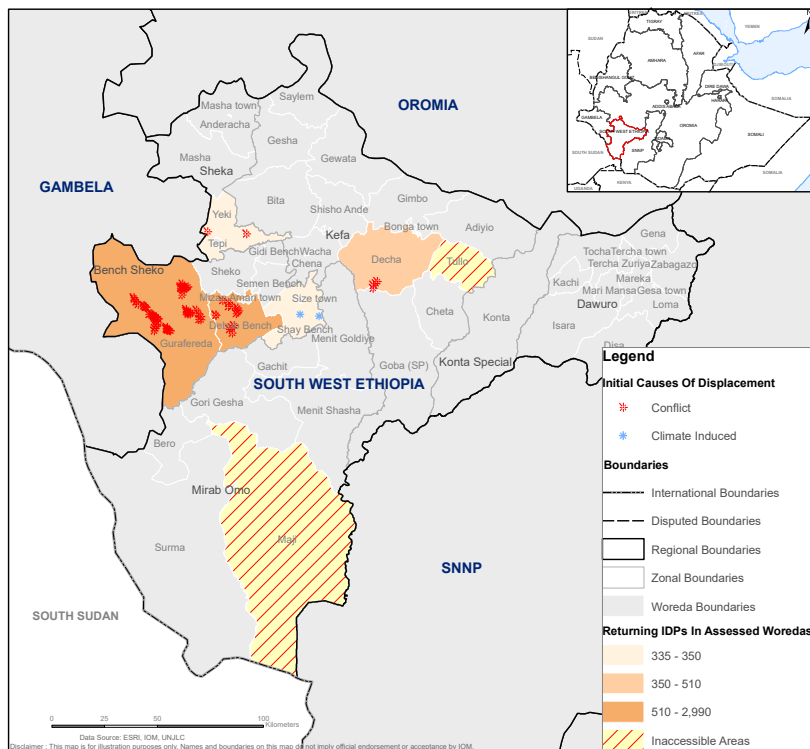


Figure 30: Returning IDP figures for South West Ethiopia Peoples region in VAS round 11.

\*Please note that the sex and age disaggregation for returning IDPs is an estimate based on the percentage of male and female returning IDPs and based on the percentage of returning IDPs at each age bracket. This is calculated at village level.

# ANNEX A

## SUMMARY TABLE OF DISPLACEMENT

### Site Assessment

Displacement Tracking Matrix (DTM) Site Assessment Round 28 (1 December 2021 - 8 January 2022) - Summary Table of Displacement

Round	Region	Zone	Woreda	Cause	Before 2021			During 2021			In 2022			Total HH	Total Individuals	Total Sites
					HH	Individuals	Sites	HH	Individuals	Sites	HH	Individuals	Sites			
Site Assessment Round 28 (1 December 2021 - 8 January 2022)	Benchangul Gumuz	Asosa	Billidiglu	Conflict	147	571	2	3,058	13,124	8	-	-	3,205	13,695	10	
	Benchangul Gumuz	Asosa	Sherkole	Conflict	-	-	-	644	3,027	5	-	-	644	3,027	5	
	Benchangul Gumuz	Asosa	Bambasi	Conflict	-	-	-	2,396	9,466	14	-	-	2,396	9,466	14	
	Benchangul Gumuz	Asosa	Asosa	Conflict	-	-	-	23	108	1	-	-	23	108	1	
	Benchangul Gumuz	Asosa	Asosa Town Administr. Woreda 1	Conflict	-	-	-	114	368	3	-	-	114	368	3	
	Benchangul Gumuz	Asosa	Asosa Town Administr. Woreda 2	Conflict	40	133	1	6,255	26,148	32	-	-	6,442	26,852	35	
	Benchangul Gumuz Total					187	704	3	6,255	26,148	32	-	-	6,442	26,852	35
	Dire Dawa			Kazira	Conflict	114	570	1	-	-	-	-	-	114	570	1
	Dire Dawa Total					114	570	1	-	-	-	-	-	114	570	1
	Gambella			Gog	Conflict	755	4,152	2	-	-	-	-	-	755	4,152	2
	Gambella			Jore	Conflict	75	433	1	-	-	-	-	-	75	433	1
	Gambella			Itang Special Woreda	Conflict	-	-	-	95	402	1	-	-	95	402	1
	Gambella			Itang	Seasonal flood	799	4,902	1	1,717	10,990	4	-	-	2,516	15,492	5
	Gambella			Jikawo	Conflict	1,691	11,150	3	-	-	-	-	-	1,691	11,150	3
	Gambella			Lare	Conflict	1,327	8,718	4	-	-	-	-	-	1,327	8,718	4
	Gambella			Wantawo	Seasonal flood	-	-	-	550	3,462	4	-	-	550	3,462	4
	Gambella Total					4,647	29,385	11	2,362	14,454	9	-	-	7,009	43,809	20
	Hareri			Erer Woldiya	Conflict	47	234	1	-	-	-	-	-	47	234	1
	Hareri			Abaelir	Conflict	25	125	1	-	-	-	-	-	25	125	1
	Hareri			Abo Ker	Conflict	30	170	1	-	-	-	-	-	30	170	1
	Hareri			Amir Nur	Conflict	85	327	1	-	-	-	-	-	85	327	1
	Hareri			Hikim	Conflict	324	1,517	2	-	-	-	-	-	324	1,517	2
	Hareri			Hikim	Conflict	32	192	1	-	-	-	-	-	32	192	1
	Hareri			Jenela	Conflict	23	90	1	-	-	-	-	-	23	90	1
	Hareri			Shenkor	Conflict	101	509	1	-	-	-	-	-	101	509	1
	Hareri			Sofi	Conflict	667	3,124	9	-	-	-	-	-	667	3,124	9
	Hareri Total					1,080	5,295	3	-	-	-	-	-	1,080	5,295	3
	Oromia			Degeluna Tijo	Conflict	33	129	1	-	-	-	-	-	33	129	1
Oromia			Gobolcha Ansi	Conflict	28	90	1	-	-	-	-	-	28	90	1	
Oromia			Gobolcha Ansi	Flash Flood	511	2,979	6	-	-	-	-	-	511	2,979	6	
Oromia			Munessa	Conflict	20	40	1	-	-	-	-	-	20	40	1	
Oromia			Merti	Conflict	24	129	1	-	-	-	-	-	24	129	1	
Oromia			Amigna	Conflict	41	144	1	-	-	-	-	-	41	144	1	
Oromia			Bele Goggar	Conflict	30	112	1	-	-	-	-	-	30	112	1	
Oromia			Hibosa	Conflict	24	80	1	-	-	-	-	-	24	80	1	
Oromia			Robe	Conflict	157	509	1	-	-	-	-	-	157	509	1	
Oromia			Shirka	Conflict	156	425	1	-	-	-	-	-	156	425	1	
Oromia			Sude	Conflict	27	85	1	-	-	-	-	-	27	85	1	
Oromia			Aseko	Conflict	22	77	1	-	-	-	-	-	22	77	1	
Oromia			Diksis	Conflict	21	55	1	-	-	-	-	-	21	55	1	
Oromia			Media Welabu	Conflict	770	3,449	3	-	-	-	-	-	770	3,449	3	
Oromia			Bale	Conflict	1,140	5,947	2	-	-	-	-	-	1,140	5,947	2	
Oromia			Bale	Conflict	247	1,169	1	-	-	-	-	-	247	1,169	1	
Oromia			Gura Damole	Conflict	67	154	1	-	-	-	-	-	67	154	1	
Oromia			Gasera	Conflict	63	147	1	-	-	-	-	-	63	147	1	
Oromia			Agarfa	Conflict	24	57	1	-	-	-	-	-	24	57	1	
Oromia			Goba	Conflict	57	173	2	-	-	-	-	-	57	173	2	
Oromia			Shana	Conflict	7519	46,915	10	-	-	-	-	-	7,519	46,915	10	
Oromia			Guchi	Conflict	1,591	9,045	2	-	-	-	-	-	1,591	9,045	2	
Oromia			Borena	Other	4,001	24,825	4	-	-	-	-	-	4,001	24,825	4	
Oromia			Moyale	Conflict	3,393	24,494	3	-	-	-	-	-	3,393	24,494	3	
Oromia			Moyale	Other	581	4,280	1	-	-	-	-	-	581	4,280	1	
Oromia			Borena	Conflict	1,216	5,955	4	-	-	-	-	-	1,216	5,955	4	
Oromia			Borena	Conflict	519	3,600	3	-	-	-	-	-	519	3,600	3	
Oromia			Borena	Conflict	203	1,502	1	-	-	-	-	-	203	1,502	1	
Oromia			Burno Bedele	Other	1,316	7,295	2	-	-	-	-	-	1,316	7,295	2	
Oromia			Legs Hida	Conflict	852	4,076	2	-	-	-	-	-	852	4,076	2	
Oromia			Rayfuu	Conflict	264	1,137	2	-	-	-	-	-	264	1,137	2	
Oromia			Gini	Conflict	97	456	1	-	-	-	-	-	97	456	1	
Oromia			Gobolcha Bale	Conflict	33	60	1	-	-	-	-	-	33	60	1	
Oromia			Dawe Sereer	Conflict	901	3,569	3	-	-	-	-	-	901	3,569	3	
Oromia			Sewena	Conflict	1,080	5,295	3	-	-	-	-	-	1,080	5,295	3	



Displacement Tracking Matrix (DTM) Site Assessment Round 28 (1 December 2021 - 8 January 2022) - Summary Table of Displacement

Round	Region	Zone	Woreda	Cause	Before 2021			During 2021			In 2022			Total HH	Total Individuals	Total Sites
					HH	Individuals	Sites	HH	Individuals	Sites	HH	Individuals	Sites			
Oromia	East Harerge	Babile	1,111	5,081	18	-	-	-	-	-	-	-	1,111	5,081	18	
Oromia	East Harerge	Chinaksen	5,009	27,645	26	1,954	10,951	11	-	-	-	-	6,963	38,596	37	
Oromia	East Harerge	Fedis	3,204	13,323	10	-	-	-	-	-	-	-	3,204	13,323	10	
Oromia	East Harerge	Gursum	1,381	8,925	23	-	-	-	-	-	-	-	1,381	8,925	23	
Oromia	East Harerge	Kersa	412	1,717	5	-	-	-	-	-	-	-	412	1,717	5	
Oromia	East Harerge	Kumbi	5,551	31,965	4	-	-	-	-	-	-	-	5,551	31,965	4	
Oromia	East Harerge	Malka Balo	473	1,096	6	-	-	-	-	-	-	-	473	1,096	6	
Oromia	East Harerge	Mewa Muluke	3,600	19,327	3	-	-	-	-	-	-	-	3,600	19,327	3	
Oromia	East Harerge	Midaga Tola	302	1,364	7	-	-	-	-	-	-	-	302	1,364	7	
Oromia	East Harerge	Goro Gutu	738	3,080	9	-	-	-	-	-	-	-	738	3,080	9	
Oromia	East Harerge	Kombolcha	68	265	2	20	63	1	-	-	-	-	88	328	3	
Oromia	East Harerge	Bedeno	124	524	2	-	-	-	-	-	-	-	124	524	2	
Oromia	East Harerge	Deder	1,706	6,860	22	-	-	-	-	-	-	-	1,706	6,860	22	
Oromia	East Harerge	Goro Muti	208	656	6	-	-	-	-	-	-	-	208	656	6	
Oromia	East Harerge	Girawa	152	619	4	-	-	-	-	-	-	-	152	619	4	
Oromia	East Harerge	Haro Maya	222	980	7	43	194	1	-	-	-	-	265	1,174	8	
Oromia	East Harerge	Haro Maya	98	533	1	-	-	-	-	-	-	-	98	533	1	
Oromia	East Harerge	Janso	1,501	7,236	7	83	405	2	-	-	-	-	1,584	7,641	9	
Oromia	East Harerge	Kurfa Chelle	54	209	1	-	-	-	-	-	-	-	54	209	1	
Oromia	East Harerge	Meta	143	568	5	-	-	-	-	-	-	-	143	568	5	
Oromia	East Harerge	Meta	233	924	1	-	-	-	-	-	-	-	233	924	1	
Oromia	East Harerge	Golo Oda	147	745	1	-	-	-	-	-	-	-	147	745	1	
Oromia	East Wallaga	Diga	973	7,254	2	-	6,420	10	-	-	-	-	1,225	6,420	10	
Oromia	East Wallaga	Saiga	1,045	6,138	2	743	4,376	6	-	-	-	-	1,788	10,514	8	
Oromia	East Wallaga	Saiga	784	5,307	3	-	-	-	-	-	-	-	784	5,307	3	
Oromia	East Wallaga	Gida Ayana	-	-	-	3,875	19,059	20	-	-	-	-	3,875	19,059	20	
Oromia	East Wallaga	Guto Gida	-	-	-	509	2,879	8	-	-	-	-	509	2,879	8	
Oromia	East Wallaga	Nekemte Town	444	2,621	6	1,426	7,754	21	-	-	-	-	1,870	10,375	27	
Oromia	East Wallaga	Gobu Seyo	-	-	-	794	5,542	4	-	-	-	-	794	5,542	4	
Oromia	East Wallaga	Leqa Dulacha	-	-	-	193	1,035	4	-	-	-	-	193	1,035	4	
Oromia	East Wallaga	Sibu Sire	-	-	-	3,262	22,012	8	-	-	-	-	3,262	22,012	8	
Oromia	East Wallaga	Wayu Tula	-	-	-	471	2,676	2	-	-	-	-	471	2,676	2	
Oromia	Other	Girja (Harenfema)	21	125	1	-	-	-	-	-	-	-	21	125	1	
Oromia	Other	Goro Dola	2,251	12,531	1	1,798	8,991	1	-	-	-	-	4,049	21,522	2	
Oromia	Other	Liben	585	3,038	5	-	997	5,607	2	-	-	-	997	5,607	2	
Oromia	Other	Liben	6,321	37,295	1	-	-	-	-	-	-	-	6,321	37,295	1	
Oromia	Other	Odo Shakiso	346	1,845	1	27	132	1	-	-	-	-	27	132	1	
Oromia	Other	Negelle City Administration	-	-	-	3,066	18,089	1	-	-	-	-	3,066	18,089	1	
Oromia	Other	Wadera	-	-	-	301	1,664	2	-	-	-	-	301	1,664	2	
Oromia	Other	Wadera	-	-	-	280	1,690	1	-	-	-	-	280	1,690	1	
Oromia	Other	Botor Tolley	1,231	7,021	6	-	-	-	-	-	-	-	1,231	7,021	6	
Oromia	Other	Kersa	834	4,619	7	-	-	-	-	-	-	-	834	4,619	7	
Oromia	Other	Sigmo	29	79	1	-	-	-	-	-	-	-	29	79	1	
Oromia	Other	Gera	180	960	2	-	-	-	-	-	-	-	180	960	2	
Oromia	Other	Gumay	49	277	1	-	-	-	-	-	-	-	49	277	1	
Oromia	Other	Jimma Town	612	3,609	2	-	-	-	-	-	-	-	612	3,609	2	
Oromia	Other	Setema	40	227	1	-	-	-	-	-	-	-	40	227	1	
Oromia	Other	Dale Saedi	63	321	2	-	-	-	-	-	-	-	63	321	2	
Oromia	Other	Cherka Sadi	50	235	2	-	-	-	-	-	-	-	50	235	2	
Oromia	Other	Dambi Dolo	947	5,082	7	381	2,176	4	-	-	-	-	1,328	7,258	11	
Oromia	Other	Dambi Dolo	-	-	-	180	990	1	-	-	-	-	180	990	1	
Oromia	Other	Hawa Galan	-	-	-	311	1,667	6	-	-	-	-	311	1,667	6	
Oromia	Other	Kellem Wallaga	40	88	1	222	2,288	3	-	-	-	-	262	2,376	4	
Oromia	Other	North Shewa (R4)	218	669	1	1,770	8,031	4	-	-	-	-	1,988	8,700	5	
Oromia	Other	North Shewa (R4)	-	-	-	201	1,055	3	-	-	-	-	201	1,055	3	
Oromia	Other	South West Shewa	20	44	1	-	-	-	-	-	-	-	20	44	1	
Oromia	Other	Wenchi	31	66	1	-	-	-	-	-	-	-	31	66	1	

Site Assessment  
Round 28  
(1 December 2021 - 8  
January 2022)

Displacement Tracking Matrix (DTM) Site Assessment Round 28 (1 December 2021 - 8 January 2022) - Summary Table of Displacement

Round	Region	Zone	Woreda	Cause	Before 2021			During 2021			In 2022			Total HH	Total Individuals	Total Sites
					HH	Individuals	Sites	HH	Individuals	Sites	HH	Individuals	Sites			
Oromia	South West Shewa		Waliso Town	Conflict	31	113	1	-	-	-	-	-	31	113	1	
Oromia	West Ansi		Gedeb Asasa	Conflict	52	187	1	-	-	-	-	-	52	187	1	
Oromia	West Ansi		Shalla	Conflict	21	86	1	-	-	-	-	-	21	86	1	
Oromia	West Ansi		Shasheme Zuria	Flash Flood	42	257	2	-	-	-	-	-	42	257	2	
Oromia	West Ansi		Siraro	Conflict	3,307	19,274	9	-	-	-	-	-	3,307	19,274	9	
Oromia	West Ansi		Abba	Conflict	71	183	1	-	-	-	-	-	71	183	1	
Oromia	West Ansi		Dodola	Conflict	41	115	1	-	-	-	-	-	41	115	1	
Oromia	West Ansi		Bihun Guracha City Administration	Flash Flood	21	125	1	-	-	-	-	-	21	125	1	
Oromia	West Guji		Dugeda Dawa	Drought	-	-	-	13,291	66,903	21	-	-	13,291	66,903	21	
Oromia	West Guji		Dugeda Dawa	Other	-	-	-	1,345	7,941	2	-	-	1,345	7,941	2	
Oromia	West Guji		Galana	Conflict	2,233	14,730	3	-	-	-	-	-	2,233	14,730	3	
Oromia	West Guji		Galana	Other	-	-	-	781	5,319	2	-	-	781	5,319	2	
Oromia	West Guji		Galana	Seasonal Flood	971	6,680	4	-	-	-	-	-	971	6,680	4	
Oromia	West Guji		Suro Barguda	Other	1,918	11,756	9	60	404	1	-	-	1,978	12,160	10	
Oromia	West Guji		Abaya	Other	276	1,675	1	104	708	1	-	-	380	2,383	2	
Oromia	West Guji		Abaya	Seasonal Flood	791	4,366	4	-	-	-	-	-	791	4,366	4	
Oromia	West Guji		Bule Hora	Drought	-	-	-	42	297	1	-	-	42	297	1	
Oromia	West Guji		Bule Hora	Other	-	-	-	2,749	19,075	2	-	-	2,749	19,075	2	
Oromia	West Guji		Kerca Town	Other	-	-	-	1,868	8,990	2	-	-	1,868	8,990	2	
Oromia	West Guji		Bibirsa Kojowa	Other	-	-	-	192	1,498	1	-	-	192	1,498	1	
Oromia	West Guji		Bule Hora Town	Other	-	-	-	2,856	17,921	8	-	-	2,856	17,921	8	
Oromia	West Harege		Bordode	Conflict	1,907	9,270	10	300	1,500	1	-	-	2,207	10,770	11	
Oromia	West Harege		Doba	Conflict	154	806	3	-	-	-	-	-	154	806	3	
Oromia	West Harege		Mieso	Conflict	1,427	7,516	8	-	-	-	-	-	1,427	7,516	8	
Oromia	West Harege		Chiro Zuria	Conflict	43	56	1	-	-	-	-	-	43	56	1	
Oromia	West Harege		Daro Lebu	Conflict	634	3,262	4	-	-	-	-	-	634	3,262	4	
Oromia	West Harege		Gemechis	Conflict	33	83	1	-	-	-	-	-	33	83	1	
Oromia	West Harege		Tulo	Conflict	119	320	1	32	114	1	-	-	151	434	2	
Oromia	West Harege		Habro	Conflict	78	298	1	-	-	-	-	-	78	298	1	
Oromia	West Harege		Haw Gudina	Conflict	70	350	1	-	-	-	-	-	70	350	1	
Oromia	West Harege		Shanan Dhuuggo	Conflict	51	153	1	-	-	-	-	-	51	153	1	
Oromia	West Shewa		Dendi	Conflict	32	73	1	-	-	-	-	-	32	73	1	
Oromia	West Shewa		Ambo Town	Conflict	45	128	1	61	363	1	-	-	106	491	2	
Oromia	West Shewa		Adda Berga	Conflict	-	-	-	306	1,761	4	-	-	306	1,761	4	
Oromia	West Shewa		Bako Tibe	Conflict	-	-	-	1,009	3,098	6	57	331	1,066	3,429	8	
Oromia	West Shewa		Liben Jawi	Conflict	-	-	-	70	330	3	-	-	70	330	3	
Oromia	West Shewa		Toke Kutaye	Conflict	-	-	-	-	-	-	120	696	2	120	696	2
Oromia	West Wallaga		Boji Dirmeji	Conflict	1,045	5,654	4	-	-	-	-	-	1,045	5,654	4	
Oromia	West Wallaga		Lalo Asabi	Conflict	191	1,100	1	116	633	3	-	-	307	1,733	4	
Oromia	West Wallaga		Gimbi	Conflict	59	315	1	-	-	-	-	-	59	315	1	
Oromia	West Wallaga		Gimbi Town	Conflict	321	2,012	1	422	2,564	5	-	-	743	4,576	6	
Oromia	West Wallaga		Lata Sibru	Conflict	488	2,708	4	-	-	-	-	-	488	2,708	4	
Oromia	West Wallaga		Mandi Town	Conflict	1,379	7,860	4	1,396	8,481	7	-	-	2,775	16,341	11	
Oromia	West Wallaga		Olku Kara	Conflict	497	2,613	3	-	-	-	-	-	497	2,613	3	
Oromia	West Wallaga		Najo Town	Conflict	1,181	6,326	4	1,018	5,075	8	-	-	2,199	11,401	12	
Oromia	West Wallaga		Ayira	Conflict	-	-	-	56	287	1	-	-	56	287	1	
Oromia	West Wallaga		Guliso	Conflict	-	-	-	151	654	2	-	-	151	654	2	
Oromia Total					90,108	501,997	391	52,357	289,662	210	177	1,027	142,642	792,686	605	
Sidama	Zone 1		Belate Zuria	Conflict	4,685	28,346	13	-	-	-	-	-	4,685	28,346	13	
Sidama	Zone 1		Hawassa Zuria	Conflict	-	-	-	462	2,214	9	-	-	462	2,214	9	
Sidama	Zone 1		Hawassa Zuria	Flash Flood	254	1,242	4	-	-	-	-	-	254	1,242	4	
Sidama	Zone 1		Bensa	Conflict	280	3,137	1	-	-	-	-	-	280	3,137	1	
Sidama	Zone 1		Aleta Chiko	Conflict	-	-	-	110	688	5	-	-	110	688	5	
Sidama	Zone 1		Bona Zuria	Conflict	-	-	-	22	154	1	-	-	22	154	1	
Sidama	Zone 1		Boricha	Conflict	-	-	-	84	443	3	-	-	84	443	3	
Sidama	Zone 1		Chiri	Conflict	-	-	-	464	2,692	1	-	-	464	2,692	1	
Sidama	Zone 1		Hawela	Conflict	-	-	-	91	501	2	-	-	91	501	2	
Sidama	Zone 1		Hula	Conflict	-	-	-	72	414	2	-	-	72	414	2	
Sidama	Zone 1		Wenoshu	Conflict	-	-	-	139	806	5	-	-	139	806	5	





Displacement Tracking Matrix (DTM) Site Assessment Round 28 (1 December 2021 - 8 January 2022) - Summary Table of Displacement

Round	Region	Zone	Woreda	Cause	Before 2021			During 2021			In 2022			Total HH	Total Individuals	Total Sites
					HH	Individuals	Sites	HH	Individuals	Sites	HH	Individuals	Sites			
Site Assessment Round 28 (1 December 2021 - 8 January 2022)	Sidama Total	Amaro Special Woreda	Amaro Special Woreda	Conflict	5,219	32,775	18	1,444	7,912	28	-	-	-	6,663	40,637	46
		Basketo	Basketo SP Woreda	Conflict	6,612	32,776	15	1,990	10,959	4	-	-	-	8,602	43,735	19
		Burji Special Woreda	Burji	Conflict	76	502	3	-	-	-	-	-	-	76	502	3
		Derashe Special Woreda	Derashe Special Woreda	Conflict	626	3,571	4	-	-	-	-	-	-	626	3,571	4
		Gamo	Mirab Abaya	Conflict	1,745	10,819	1	-	-	-	-	-	-	1,745	10,819	1
		Gamo	Gerese	Conflict	287	1,990	1	-	-	-	-	-	-	287	1,990	1
		Gamo	Gacho Baba	Conflict	26	172	1	-	-	-	-	-	-	26	172	1
		Gamo	Demba Gofa	Conflict	45	305	1	21	144	1	-	-	-	66	505	2
		Gofa	Geze Gofa	Conflict	340	2,238	6	-	-	-	-	-	-	340	2,238	6
		Gofa	Melo Kozu	Conflict	979	6,371	7	298	1,952	2	-	-	-	1,277	8,323	9
		Gurage	Mareko	Conflict	513	3,080	3	312	1,583	2	-	-	-	825	4,663	5
		Gurage	Mieskan	Conflict	693	4,714	7	99	718	2	-	-	-	792	5,432	9
		Gurage	Misrak Meskan	Conflict	721	4,102	8	799	4,944	5	-	-	-	1,520	9,046	13
		Gurage	Cheha	Fire	-	-	-	21	124	1	-	-	-	21	124	1
		Gurage	Welkite Town Administration	Conflict	823	5,707	21	36	140	1	-	-	-	859	6,147	22
		Hadhya	Dune	Conflict	419	3,104	10	-	-	-	-	-	-	419	3,104	10
		Hadhya	Misrak Badawacho	Conflict	35	267	1	-	-	-	-	-	-	35	267	1
		Hadhya	Analemno	Seasonal Flood	277	1,449	4	-	-	-	-	-	-	277	1,449	4
		Hadhya	Shashogo	Conflict	71	367	2	30	215	1	-	-	-	101	582	3
		Hadhya	Soro	Seasonal Flood	533	3,924	3	-	-	-	-	-	-	533	3,924	3
		Hadhya	Mierab Badawacho	Conflict	458	3,425	13	-	-	-	-	-	-	458	3,425	13
		Hadhya	Gembora	Conflict	34	251	1	-	-	-	-	-	-	34	251	1
		Hadhya	Lemo	Conflict	23	138	1	21	152	1	-	-	-	44	290	2
		Kembata Tembaro	Kedida Gammella	Conflict	285	2,181	9	-	-	-	-	-	-	285	2,181	9
		Kembata Tembaro	Anigacha	Conflict	210	1,590	5	43	305	1	-	-	-	253	1,895	6
		Kembata Tembaro	Dambaya	Conflict	194	1,491	6	-	-	-	-	-	-	194	1,491	6
		Kembata Tembaro	Kacha Bira	Conflict	22	167	1	-	-	-	-	-	-	22	167	1
		Kembata Tembaro	Doya Gena	Conflict	77	447	3	-	-	-	-	-	-	77	447	3
		Kembata Tembaro	Hadero Tunto	Conflict	205	1,397	5	-	-	-	-	-	-	205	1,397	5
		Kembata Tembaro	Adilo	Conflict	62	410	3	-	-	-	-	-	-	62	410	3
		Konso	Karat Zuria	Conflict	66	478	2	-	-	-	-	-	-	66	478	2
		Konso	Segon Zuria	Conflict	533	3,000	2	-	-	-	-	-	-	533	3,000	2
		Konso	Kena	Conflict	664	4,448	3	311	1,757	2	-	-	-	975	6,205	5
		Konso	Mierab Azemet Berbere	Conflict	155	554	1	370	2,531	2	-	-	-	525	3,085	3
		Silti	Sankura	Conflict	55	331	1	-	-	-	-	-	-	55	331	1
		Silti	Wilbarag	Conflict	74	361	2	-	-	-	-	-	-	74	361	2
		Silti	Worabe Ketema Astedader	Conflict	199	617	2	25	176	1	-	-	-	224	793	3
		Silti	Alicho Worro	Conflict	221	822	3	-	-	-	-	-	-	221	822	3
		Silti	Kibet Town Administration	Conflict	108	617	1	-	-	-	-	-	-	108	617	1
		Silti	Dasenech (Kuraz)	Conflict	52	407	1	-	-	-	-	-	-	52	407	1
		South Omo	Dasenech (Kuraz)	Flash Flood	5,168	24,929	7	-	-	-	-	-	-	5,168	24,929	7
		South Omo	Dasenech (Kuraz)	Seasonal Flood	3,939	18,626	13	1,991	6,770	3	-	-	-	5,930	25,396	16
		Wolayita	South Ar (Bako Gazer)	Conflict	30	136	1	-	-	-	-	-	-	30	136	1
		Wolayita	Diguna Fango	Conflict	405	2,453	2	-	-	-	-	-	-	405	2,453	2
		Wolayita	Kindo Dida	Conflict	523	3,210	7	-	-	-	-	-	-	523	3,210	7
		Wolayita	Kindo Koysha	Conflict	273	1,632	5	-	-	-	-	-	-	273	1,632	5
Wolayita	Abela Abaya	Flash Flood	600	3,836	4	-	-	-	-	-	-	600	3,836	4		
Wolayita	Damot Sore	Conflict	110	648	2	-	-	-	-	-	-	110	648	2		
Wolayita	Damot Weyidle	Flash Flood	68	402	2	-	-	-	-	-	-	68	402	2		
Wolayita	Kawo Koysha	Conflict	-	-	-	68	436	1	-	-	-	68	436	1		
Wolayita	Ota	Conflict	-	-	-	53	321	2	-	-	-	53	321	2		
Yem	Yem Special Woreda	Conflict	46	261	1	-	-	-	-	-	-	46	261	1		
<b>SNPP Total</b>			<b>29,680</b>	<b>164,723</b>	<b>207</b>	<b>5,960</b>	<b>33,770</b>	<b>34</b>	<b>35,640</b>	<b>198,493</b>	<b>241</b>					
Somali	Alder	Cheret/Weyib	319	1,914	1	-	-	-	-	-	-	-	319	1,914	1	
	Alder	Cheret/Weyib	526	3,051	1	-	-	-	-	-	-	-	526	3,051	1	
	Alder	Dolobay	2,052	12,313	3	-	-	-	-	-	-	-	2,052	12,313	3	
	Alder	Dolobay	457	2,711	1	-	-	-	-	-	-	-	457	2,711	1	
	Alder	Hergelle	1,198	7,188	3	573	3,438	1	-	-	-	-	1,771	10,626	4	
	Alder	Raso	1,265	7,633	1	-	-	-	-	-	-	-	1,265	7,633	1	

Displacement Tracking Matrix (DTM) Site Assessment Round 28 (1 December 2021 - 8 January 2022) - Summary Table of Displacement

Round	Region	Zone	Woreda	Cause	Before 2021			During 2021			In 2022			Total HH	Total Individuals	Total Sites
					HH	Individuals	Sites	HH	Individuals	Sites	HH	Individuals	Sites			
Somali	Alder	Alder	Raao	Drought	295	1,632	2	-	-	-	295	1,632	2	295	1,632	2
Somali	Alder	Alder	Bare	Drought	4,379	26,224	9	70	389	1	4,449	26,613	10	4,449	26,613	10
Somali	Alder	Alder	God God	Drought	1,132	6,700	4	-	-	-	1,132	6,700	4	1,132	6,700	4
Somali	Alder	Alder	Ooohle	Drought	1,079	6,465	3	1,144	6,788	4	2,223	13,253	7	2,223	13,253	7
Somali	Alder	Alder	Serer/Elkere	Conflict	490	2,989	1	-	-	-	490	2,989	1	490	2,989	1
Somali	Alder	Alder	West lmi	Conflict	180	1,080	1	-	-	-	180	1,080	1	180	1,080	1
Somali	Alder	Alder	West lmi	Seasonal Flood	400	2,107	1	1,063	6,104	2	1,463	8,211	3	1,463	8,211	3
Somali	Dawa	Dawa	Hudet	Conflict	9,997	59,808	20	-	-	-	9,997	59,808	20	9,997	59,808	20
Somali	Dawa	Dawa	Mayale	Conflict	11,790	73,620	9	288	1,701	1	12,078	75,321	10	12,078	75,321	10
Somali	Dawa	Dawa	Mayale	Drought	-	-	-	2,471	14,791	6	2,471	14,791	6	2,471	14,791	6
Somali	Dawa	Dawa	Mubarak	Conflict	210	1,323	1	350	2,193	1	560	3,516	2	560	3,516	2
Somali	Dawa	Dawa	Mubarak	Drought	-	-	-	1,560	9,805	4	1,560	9,805	4	1,560	9,805	4
Somali	Dawa	Dawa	Qadhadhumo	Conflict	1,596	9,951	6	180	1,164	1	1,776	11,115	7	1,776	11,115	7
Somali	Dawa	Dawa	Qadhadhumo	Drought	-	-	-	1,469	9,093	7	1,469	9,093	7	1,469	9,093	7
Somali	Doolo	Doolo	Boh	Drought	660	4,172	5	-	-	-	660	4,172	5	660	4,172	5
Somali	Doolo	Doolo	Danot	Drought	1,528	9,597	8	-	-	-	1,528	9,597	8	1,528	9,597	8
Somali	Doolo	Doolo	Darotole	Drought	417	2,449	5	-	-	-	417	2,449	5	417	2,449	5
Somali	Doolo	Doolo	Gal Heiner	Drought	260	1,664	1	-	-	-	260	1,664	1	260	1,664	1
Somali	Doolo	Doolo	Geladin	Drought	1,482	9,449	6	-	-	-	1,482	9,449	6	1,482	9,449	6
Somali	Doolo	Doolo	Lahel'Yu'Ub	Conflict	-	-	-	370	2,171	1	370	2,171	1	370	2,171	1
Somali	Doolo	Doolo	Lahel'Yu'Ub	Drought	1,505	9,010	3	-	-	-	1,505	9,010	3	1,505	9,010	3
Somali	Doolo	Doolo	Warder	Drought	2,115	13,259	8	-	-	-	2,115	13,259	8	2,115	13,259	8
Somali	Erer	Erer	Laghadida	Conflict	1,762	10,385	6	-	-	-	1,762	10,385	6	1,762	10,385	6
Somali	Erer	Erer	Laghadida	Drought	150	875	1	-	-	-	150	875	1	150	875	1
Somali	Erer	Erer	Mayamulupo	Conflict	983	5,889	3	75	463	1	1,068	6,342	4	1,068	6,342	4
Somali	Erer	Erer	Salehad	Conflict	1,588	9,483	8	-	-	-	1,588	9,483	8	1,588	9,483	8
Somali	Erer	Erer	Qubi	Conflict	1,433	8,624	6	-	-	-	1,433	8,624	6	1,433	8,624	6
Somali	Erer	Erer	Qubi	Drought	83	501	1	-	-	-	83	501	1	83	501	1
Somali	Erer	Erer	Wangay	Conflict	153	927	2	-	-	-	153	927	2	153	927	2
Somali	Fafan	Fafan	Babile	Conflict	19,717	114,772	15	-	-	-	19,717	114,772	15	19,717	114,772	15
Somali	Fafan	Fafan	Gursum	Conflict	1,275	7,062	6	-	-	-	1,275	7,062	6	1,275	7,062	6
Somali	Fafan	Fafan	Harehen	Drought	85	511	1	-	-	-	85	511	1	85	511	1
Somali	Fafan	Fafan	Karibeyah	Drought	1,320	7,920	1	-	-	-	1,320	7,920	1	1,320	7,920	1
Somali	Fafan	Fafan	Tuiguled	Conflict	4,214	25,017	4	-	-	-	4,214	25,017	4	4,214	25,017	4
Somali	Fafan	Fafan	Jijiga	Conflict	303	1,819	3	-	-	-	303	1,819	3	303	1,819	3
Somali	Fafan	Fafan	Jijiga City Administration	Conflict	180	1,026	1	-	-	-	180	1,026	1	180	1,026	1
Somali	Fafan	Fafan	Aware	Drought	820	4,920	2	-	-	-	820	4,920	2	820	4,920	2
Somali	Jarar	Jarar	Daror	Drought	460	2,761	2	-	-	-	460	2,761	2	460	2,761	2
Somali	Jarar	Jarar	Dig	Drought	249	1,495	1	-	-	-	249	1,495	1	249	1,495	1
Somali	Jarar	Jarar	Gashamo	Drought	2,395	14,371	5	-	-	-	2,395	14,371	5	2,395	14,371	5
Somali	Jarar	Jarar	Gunagado	Drought	451	2,707	1	-	-	-	451	2,707	1	451	2,707	1
Somali	Jarar	Jarar	Bilbur	Drought	200	1,200	1	-	-	-	200	1,200	1	200	1,200	1
Somali	Jarar	Jarar	Degehabur	Conflict	46	277	1	-	-	-	46	277	1	46	277	1
Somali	Jarar	Jarar	Degehabur	Drought	195	1,167	1	-	-	-	195	1,167	1	195	1,167	1
Somali	Korahle	Korahle	Bodaley	Drought	68	403	1	-	-	-	68	403	1	68	403	1
Somali	Korahle	Korahle	Debeweyin	Drought	656	3,853	2	-	-	-	656	3,853	2	656	3,853	2
Somali	Korahle	Korahle	Debeweyin	Seasonal Flood	94	555	2	-	-	-	94	555	2	94	555	2
Somali	Korahle	Korahle	El-ogaden	Conflict	-	-	-	63	379	1	63	379	1	63	379	1
Somali	Korahle	Korahle	El-ogaden	Drought	240	1,393	2	-	-	-	240	1,393	2	240	1,393	2
Somali	Korahle	Korahle	Gogio	Drought	419	2,495	4	-	-	-	419	2,495	4	419	2,495	4
Somali	Korahle	Korahle	Kebridehar	Drought	570	3,369	6	-	-	-	570	3,369	6	570	3,369	6
Somali	Korahle	Korahle	Kebridehar	Fresh Flood	516	3,147	1	-	-	-	516	3,147	1	516	3,147	1
Somali	Korahle	Korahle	Marsin	Drought	548	3,262	3	-	-	-	548	3,262	3	548	3,262	3
Somali	Korahle	Korahle	Shilabo	Conflict	155	915	1	-	-	-	155	915	1	155	915	1
Somali	Korahle	Korahle	Shilabo	Drought	365	2,150	3	-	-	-	365	2,150	3	365	2,150	3
Somali	Korahle	Korahle	Higlojav	Drought	77	444	1	-	-	-	77	444	1	77	444	1
Somali	Korahle	Korahle	Lasdhankeyre	Drought	76	440	1	-	-	-	76	440	1	76	440	1
Somali	Korahle	Korahle	Shekoshi	Drought	60	348	1	-	-	-	60	348	1	60	348	1
Somali	Liben	Liben	Deka Sefu	Conflict	6,578	38,402	35	693	3,842	9	7,271	42,244	44	7,271	42,244	44
Somali	Liben	Liben	Dolo Odo	Conflict	463	2,316	1	-	-	-	463	2,316	1	463	2,316	1
Somali	Liben	Liben	Dolo Odo	Drought	602	3,035	2	-	-	-	602	3,035	2	602	3,035	2

Site Assessment  
Round 28  
(1 December 2021 - 8  
January 2022)



Displacement Tracking Matrix (DTM) Site Assessment Round 28 (1 December 2021 - 8 January 2022) - Summary Table of Displacement

Round	Region	Zone	Woreda	Cause	Before 2021			During 2021			In 2022			Total HH	Total Individuals	Total Sites
					HH	Individuals	Sites	HH	Individuals	Sites	HH	Individuals	Sites			
Somali		Liben	Dolo Odo	Flesh Flood	276	1,417	1	-	-	-	-	-	276	1,417	1	
Somali		Liben	Filtu	Conflict	6,818	36,892	28	-	-	-	-	-	6,818	36,892	28	
Somali		Liben	Filtu	Drought	87	479	1	38	214	1	-	-	125	693	2	
Somali		Liben	Filtu	Seasonal Flood	150	803	2	-	-	-	-	-	150	803	2	
Somali		Liben	Karsa Duula	Conflict	3,645	19,147	10	344	1,833	3	-	-	3,989	20,970	13	
Somali		Liben	Goro Baqaqsa	Conflict	416	2,413	1	823	4,937	1	-	-	1,239	7,350	2	
Somali		Liben	Goro Baqaqsa	Drought	-	775	-	-	4,638	2	-	-	775	4,638	2	
Somali		Liben	Guradamole	Conflict	2,983	17,400	5	300	1,759	2	-	-	3,283	19,159	7	
Somali		Liben	Guradamole	Drought	-	-	-	216	1,252	1	-	-	216	1,252	1	
Somali		Liben	Boqolmaayo	Flesh Flood	1,600	8,106	1	-	-	-	-	-	1,600	8,106	1	
Somali		Nogob	Dihun	Drought	746	4,612	6	-	-	-	-	-	746	4,612	6	
Somali		Nogob	Elwayne	Drought	710	4,378	7	-	-	-	-	-	710	4,378	7	
Somali		Nogob	Gerbo	Conflict	32	193	1	-	-	-	-	-	32	193	1	
Somali		Nogob	Gerbo	Drought	1,454	8,967	11	-	-	-	-	-	1,454	8,967	11	
Somali		Nogob	Segeg	Conflict	45	286	1	-	-	-	-	-	45	286	1	
Somali		Nogob	Segeg	Drought	714	4,368	4	-	-	-	-	-	714	4,368	4	
Somali		Nogob	Ayun	Conflict	50	297	1	-	-	-	-	-	50	297	1	
Somali		Shabelle	Abaqoro	Conflict	45	266	1	-	-	-	-	-	45	266	1	
Somali		Shabelle	Abaqoro	Drought	115	643	1	-	-	-	-	-	115	643	1	
Somali		Shabelle	Adadle	Drought	2,282	12,793	10	-	-	-	-	-	2,282	12,793	10	
Somali		Shabelle	Adadle	Seasonal Flood	600	3,558	4	-	-	-	-	-	600	3,558	4	
Somali		Shabelle	Berano	Drought	230	1,355	2	-	-	-	-	-	230	1,355	2	
Somali		Shabelle	Denan	Drought	745	4,417	5	-	-	-	-	-	745	4,417	5	
Somali		Shabelle	East Imi	Conflict	192	949	3	-	-	-	-	-	192	949	3	
Somali		Shabelle	East Imi	Drought	402	2,242	3	-	-	-	-	-	402	2,242	3	
Somali		Shabelle	East Imi	Landslide	55	296	1	-	-	-	-	-	55	296	1	
Somali		Shabelle	Elele	Drought	256	1,520	1	-	-	-	-	-	256	1,520	1	
Somali		Shabelle	Gode	Drought	426	2,430	3	-	-	-	-	-	426	2,430	3	
Somali		Shabelle	Gode	Seasonal Flood	370	2,155	3	-	-	-	-	-	370	2,155	3	
Somali		Shabelle	Kalajo	Drought	330	1,977	2	-	-	-	-	-	330	1,977	2	
Somali		Shabelle	Kalajo	Seasonal Flood	400	2,414	1	-	-	-	-	-	400	2,414	1	
Somali		Shabelle	Musthill	Flesh Flood	2,000	12,201	1	-	-	-	-	-	2,000	12,201	1	
Somali		Shabelle	Musthill	Seasonal Flood	5,060	31,521	2	-	-	-	-	-	5,060	31,521	2	
Somali		Siti	Afflem	Conflict	230	1,380	1	250	1,500	1	-	-	480	2,880	2	
Somali		Siti	Afflem	Drought	1,259	7,613	5	-	-	-	-	-	1,259	7,613	5	
Somali		Siti	Erer	Conflict	205	1,262	2	1,055	6,332	2	-	-	1,260	7,594	4	
Somali		Siti	Erer	Drought	2,046	12,279	2	-	-	-	-	-	2,046	12,279	2	
Somali		Siti	Gabalu	Conflict	155	936	1	-	-	-	-	-	155	936	1	
Somali		Siti	Gabalu	Drought	2185	13,173	3	-	-	-	-	-	2,185	13,173	3	
Somali		Siti	Gabalu	Flesh Flood	566	3,395	1	-	-	-	-	-	566	3,395	1	
Somali		Siti	Gota-Biki	Conflict	220	1,320	1	235	1,411	1	-	-	455	2,731	2	
Somali		Siti	Gota-Biki	Drought	212	1,283	2	-	-	-	-	-	212	1,283	2	
Somali		Siti	Hadgalo	Drought	535	3,230	2	-	-	-	-	-	535	3,230	2	
Somali		Siti	Hadgalo	Seasonal Flood	770	4,620	1	-	-	-	-	-	770	4,620	1	
Somali		Siti	Mieso	Conflict	2,275	13,762	5	1,230	7,513	2	-	-	3,505	21,275	7	
Somali		Siti	Mieso	Drought	1,947	11,942	7	-	-	-	-	-	1,947	11,942	7	
Somali		Siti	Mieso	Flesh Flood	187	1,122	1	-	-	-	-	-	187	1,122	1	
Somali		Siti	Shimle	Drought	590	3,740	1	-	-	-	-	-	590	3,740	1	
Somali		Siti	Denbel	Conflict	125	751	1	-	-	-	-	-	125	751	1	
<b>Somali Total</b>					<b>141,592</b>	<b>838,878</b>	<b>400</b>	<b>15,635</b>	<b>99,690</b>	<b>56</b>	<b>-</b>	<b>-</b>	<b>157,227</b>	<b>932,568</b>	<b>456</b>	
South West Ethiopia Peoples		Bench Sheko	Mizan Aman	Conflict	223	1,127	3	-	-	-	-	-	223	1,127	3	
South West Ethiopia Peoples		Bench Sheko	Dehub Bench	Conflict	440	2,080	8	90	543	1	-	-	530	2,623	9	
South West Ethiopia Peoples		Bench Sheko	Gurafereida	Conflict	305	1,807	2	256	1,252	2	-	-	561	3,059	4	
South West Ethiopia Peoples		Bench Sheko	Shay Bench	Landslide	36	242	1	-	-	-	-	-	36	242	1	
South West Ethiopia Peoples		Keffa	Tulo	Landslide	-	-	-	20	106	1	-	-	20	106	1	
South West Ethiopia Peoples		Keffa	Decha	Landslide	-	-	-	21	171	1	-	-	21	171	1	
South West Ethiopia Peoples		Mirab Omo	Maji	Conflict	228	1,290	1	120	640	1	-	-	348	1,930	2	
South West Ethiopia Peoples		Sheka	Andaracha	Conflict	416	2,122	1	-	-	-	-	-	416	2,122	1	
South West Ethiopia Peoples		Sheka	Masha	Conflict	1,213	6,865	5	-	-	-	-	-	1,213	6,865	5	
<b>South West Ethiopia Peoples Total</b>					<b>2,861</b>	<b>15,533</b>	<b>21</b>	<b>507</b>	<b>2,732</b>	<b>6</b>	<b>-</b>	<b>-</b>	<b>3,368</b>	<b>18,265</b>	<b>27</b>	
<b>Grand Total</b>					<b>275,075</b>	<b>1,887,609</b>	<b>1,061</b>	<b>84,520</b>	<b>468,368</b>	<b>375</b>	<b>177</b>	<b>4</b>	<b>339,772</b>	<b>2,097,004</b>	<b>1,440</b>	

Site Assessment Round 28 (1 December 2021 - 8 January 2022)

# ANNEX A

## SUMMARY TABLE OF DISPLACEMENT

### Emergency Site Assessment

Displacement Tracking Matrix (DTM) Emergency Site Assessment Round 9 (10 January- 15 February 2022) - Summary Table of Displacement

Round	Region	Zone	Woreda	Cause	Before 2020			During 2020			During 2021			In 2022			Total HH	Total Individuals	Total Sites
					HH	Individuals	Sites	HH	Individuals	Sites	HH	Individuals	Sites	HH	Individuals	Sites			
Afar	Afar	Aws1 (Zone 1)	Alambo	Conflict	360	2,160	1	-	-	-	-	-	-	-	360	2,160	1		
Afar	Afar	Aws1 (Zone 1)	Alambo	Flash Flood	1,150	6,900	3	191	1,146	2	-	-	-	-	1,341	8,046	5		
Afar	Afar	Aws1 (Zone 1)	Aysaita	Flash Flood	-	-	-	453	2,565	3	211	1,134	3	330	724	4,029	7		
Afar	Afar	Aws1 (Zone 1)	Aysaita	Seasonal Flood	-	-	-	295	1,732	1	-	-	-	-	295	1,732	1		
Afar	Afar	Aws1 (Zone 1)	Dubti	Flash Flood	-	-	-	486	2,916	1	524	3,144	2	-	1,010	6,060	3		
Afar	Afar	Aws1 (Zone 1)	Eldar	Drought	225	1,350	2	-	-	-	35	210	1	-	260	1,560	3		
Afar	Afar	Aws1 (Zone 1)	Mile	Conflict	400	2,400	1	-	-	-	-	-	-	-	400	2,400	1		
Afar	Afar	Aws1 (Zone 1)	Mile	Flash Flood	450	2,700	1	-	-	-	-	-	-	-	450	2,700	1		
Afar	Afar	Aws1 (Zone 1)	Kurri	Drought	30	185	1	-	-	-	-	-	-	-	30	185	1		
Afar	Afar	Aws1 (Zone 1)	Adaa' r	Conflict	1,162	6,972	4	290	1,740	1	4,095	24,570	3	1,030	5,125	30,750	4		
Afar	Afar	Aws1 (Zone 1)	Genani	Flash Flood	-	-	-	413	2,478	2	-	-	-	-	413	2,478	2		
Afar	Afar	Aws1 (Zone 1)	Genani	Conflict	-	-	-	-	-	-	-	-	-	-	-	-	-		
Afar	Afar	Aws1 (Zone 1)	Amara Legni City Administration	Seasonal Flood	183	1,079	1	-	-	-	-	-	-	3,314	11,163	2			
Afar	Afar	Fenti (Zone 4)	Teru	Conflict	-	-	-	-	-	-	-	-	-	-	-	-			
Afar	Afar	Fenti (Zone 4)	Teru	Drought	215	1,290	1	-	-	-	-	-	-	180	1,080	1			
Afar	Afar	Fenti (Zone 4)	Ewa	Other	82	443	1	-	-	-	-	-	-	215	1,290	1			
Afar	Afar	Fenti (Zone 4)	Ambarara	Conflict	993	5,958	3	-	-	-	-	-	-	82	443	1			
Afar	Afar	Gabi (Zone 3)	Ambarara	Flash Flood	-	-	-	1,071	6,426	3	-	-	-	-	993	5,958	3		
Afar	Afar	Gabi (Zone 3)	Ambarara	Flash Flood	586	3,516	1	-	-	-	290	1,740	2	-	1,071	6,426	3		
Afar	Afar	Gabi (Zone 3)	Dulecha	Drought	150	900	1	-	-	-	100	600	1	-	150	900	1		
Afar	Afar	Gabi (Zone 3)	Dulecha	Flash Flood	343	2,058	1	222	1,332	1	1,000	6,000	1	-	665	3,990	3		
Afar	Afar	Gabi (Zone 3)	Galuu	Flash Flood	-	-	-	1,475	8,850	2	-	-	-	-	1,475	8,850	2		
Afar	Afar	Gabi (Zone 3)	Gewane	Flash Flood	-	-	-	810	4,860	2	-	-	-	-	810	4,860	2		
Afar	Afar	Gabi (Zone 3)	Hamruka	Conflict	254	1,524	1	801	4,806	1	740	4,440	3	-	1,795	10,770	5		
Afar	Afar	Gabi (Zone 3)	Hamruka	Flash Flood	-	-	-	659	3,954	1	-	-	-	-	659	3,954	1		
Afar	Afar	Gabi (Zone 3)	Amhara City Administration	Conflict	-	-	-	-	-	-	211	1,266	1	-	211	1,266	1		
Afar	Afar	Hari (Zone 5)	Dallagi	Conflict	115	619	1	-	-	-	200	1,000	1	-	200	1,000	1		
Afar	Afar	Hari (Zone 5)	Dallagi	Drought	-	-	-	-	-	-	1,000	5,000	2	-	1,000	5,000	2		
Afar	Afar	Hari (Zone 5)	Dewe	Conflict	301	1,806	1	-	-	-	-	-	-	-	301	1,806	1		
Afar	Afar	Hari (Zone 5)	Hadiwala	Drought	54	286	1	-	-	-	-	-	-	-	54	286	1		
Afar	Afar	Hari (Zone 5)	Shimrod Gede'alo	Conflict	-	-	-	-	-	-	850	4,250	2	-	850	4,250	2		
Afar	Afar	Hari (Zone 5)	Tekla	Other	40	203	1	-	-	-	-	-	-	-	40	203	1		
Afar	Afar	Hari (Zone 5)	Yaruqadi	Conflict	-	-	-	-	-	-	80	400	1	-	80	400	1		
Afar	Afar	Kibabti (Zone 2)	Alfdera	Conflict	149	717	2	-	-	-	-	-	-	2,794	16,764	5			
Afar	Afar	Kibabti (Zone 2)	Alfdera	Drought	250	1,450	1	-	-	-	-	-	-	-	250	1,450	1		
Afar	Afar	Kibabti (Zone 2)	Bidu	Other	-	-	-	-	-	-	-	-	-	-	-	-			
Afar	Afar	Kibabti (Zone 2)	Erebti	Conflict	7,982	44,448	30	7,166	42,805	19	8,336	47,754	22	8,168	40,257	12			
Afar Total																			
Amhara	Amhara	Aw1/Agew	Gugusga Shikudud	Conflict	155	542	2	111	111	1	111	111	22	790	4,740	2			
Amhara	Amhara	Aw1/Agew	Zigem	Conflict	47	236	1	3,554	17,469	9	137	898	2	-	187	653	3		
Amhara	Amhara	Aw1/Agew	Jawi	Conflict	-	-	-	2,799	10,087	11	347	1,599	1	-	3,738	18,603	12		
Amhara	Amhara	Aw1/Agew	Dangilla	Conflict	32	115	1	361	1,472	6	-	-	-	-	316	1,186	6		
Amhara	Amhara	Aw1/Agew	Fagta Lakoma	Conflict	190	819	2	716	3,064	11	128	600	2	-	1,034	4,483	15		
Amhara	Amhara	Aw1/Agew	Dangilla City Administration	Conflict	191	809	3	348	1,557	4	-	-	-	-	259	1,002	5		
Amhara	Amhara	Aw1/Agew	Injibara City Administration	Conflict	107	350	2	35	117	1	-	-	-	-	539	2,366	7		
Amhara	Amhara	Aw1/Agew	Injibara City Administration	Conflict	110	393	1	-	-	-	-	-	-	-	142	467	3		
Amhara	Amhara	Aw1/Agew	Ayahu Gugusga	Conflict	750	2,587	3	64	239	1	-	-	-	-	110	393	1		
Amhara	Amhara	Aw1/Agew	Alakshara	Conflict	53	1,496	3	92	270	3	-	-	-	-	814	2,826	4		
Amhara	Amhara	Aw1/Agew	Bahir Dar	Conflict	183	632	1	210	773	3	-	-	-	-	325	1,106	3		
Amhara	Amhara	Aw1/Agew	Bahir Dar	Conflict	985	41,500	5	-	-	-	-	-	-	-	985	41,500	5		
Amhara	Amhara	Aw1/Agew	Alsea Tawadros Sub City	Conflict	99	639	1	45	297	1	200	889	2	-	344	1,825	4		
Amhara	Amhara	Aw1/Agew	Dargawal Menellis Sub City	Conflict	315	1,007	2	-	-	-	-	-	-	-	315	1,007	2		
Amhara	Amhara	Aw1/Agew	Gonder Zuria	Conflict	1,000	5,000	2	-	-	-	-	-	-	-	1,000	5,000	2		
Amhara	Amhara	Aw1/Agew	Ayvel City Administration	Conflict	32	211	1	298	1,533	4	-	-	-	-	330	1,744	5		
Amhara	Amhara	Aw1/Agew	East Belesa	Conflict	249	1,023	1	-	-	-	109	192	1	-	109	192	1		
Amhara	Amhara	Aw1/Agew	Lay Armasheho	Conflict	-	-	-	1,270	1,930	2	178	890	1	-	526	2,443	4		
Amhara	Amhara	Aw1/Agew	Chiga 1	Conflict	-	-	-	2,587	12,933	6	-	-	-	-	3,857	14,863	7		
Amhara	Amhara	Aw1/Agew	Gonder City Administration	Conflict	-	-	-	797	2	-	-	-	-	-	218	797	2		
Amhara	Amhara	Aw1/Agew	West Belesa	Conflict	256	1,008	3	649	1,485	3	97	410	1	-	206	796	2		
Amhara	Amhara	Aw1/Agew	Wogera	Conflict	206	770	3	402	1,494	5	-	-	-	-	608	2,264	8		
Amhara	Amhara	Aw1/Agew	Baso Liben	Conflict	-	-	-	116	464	1	83	319	1	-	199	793	2		
Amhara	Amhara	Aw1/Agew	Goncha Siso Enese	Conflict	-	-	-	67	217	2	-	-	-	-	67	217	2		
Amhara	Amhara	Aw1/Agew	Debre Markos	Conflict	87	376	1	43	186	1	-	-	-	-	130	562	2		
Amhara	Amhara	Aw1/Agew	Enbise Sar Midir	Conflict	36	144	1	188	745	4	-	-	-	-	224	889	2		
Amhara	Amhara	Aw1/Agew	Guzamn	Conflict	485	1,508	2	103	709	4	35	130	1	-	689	2,467	7		
Amhara	Amhara	Aw1/Agew	Merro Lemaryim City Administration	Conflict	-	-	-	-	-	-	-	-	-	-	-	-			
Amhara	Amhara	Aw1/Agew	Landslide	Conflict	-	-	-	-	-	-	-	-	-	-	-	-			
Amhara	Amhara	Aw1/Agew	Awabot	Conflict	98	308	2	-	-	-	-	-	-	-	98	308	2		



Displacement Tracking Matrix (DTM) Emergency Site Assessment Round 9 (10 January- 15 February 2022) - Summary Table of Displacement

Round	Region	Zone	Woreda	Cause	Before 2020			During 2020			During 2021			In 2022			Total HH	Total Individuals	Total Sites
					HH	Individuals	Sites	HH	Individuals	Sites	HH	Individuals	Sites	HH	Individuals	Sites			
Emergency Site Assessment Round 9 (10 January- 15 February 2022)	Amhara	East Gogjam	Enarf Enawga	Conflict	-	198	625	4	-	-	-	-	-	-	198	625	4		
	Amhara	East Gogjam	Arneded	Conflict	-	69	245	2	20	76	1	-	-	-	89	321	3		
	Amhara	East Gogjam	Debre Elias	Conflict	63	208	1	309	2	-	-	-	-	-	162	517	3		
	Amhara	East Gogjam	Seide	Conflict	289	841	3	-	-	-	-	-	-	-	289	841	3		
	Amhara	East Gogjam	Hulet Ej Entese	Conflict	251	884	6	175	1	-	-	-	-	-	289	1,059	7		
	Amhara	East Gogjam	Blugn	Conflict	633	2,375	4	-	-	-	-	-	-	-	633	2,275	4		
	Amhara	North Gonder	Addi Arekay	Conflict	-	-	-	-	-	-	-	-	-	-	4,960	13,500	2		
	Amhara	North Gonder	Debark	Conflict	-	121	347	3	1,536	3,480	2	-	-	-	1,657	3,827	5		
	Amhara	North Gonder	Dabat	Conflict	-	1,520	4,919	8	169	659	3	-	-	-	1,689	5,578	11		
	Amhara	North Gonder	Debak City Administration	Conflict	-	-	-	-	1,640	44,272	3	-	-	-	12,640	44,272	3		
	Amhara	North Gonder	Dabat City Administration	Conflict	-	678	2,177	4	-	-	-	-	-	-	678	2,177	4		
	Amhara	North Gonder	Beyeda	Conflict	-	241	561	3	-	-	-	-	-	-	241	561	3		
	Amhara	North Gonder	Janamora	Conflict	-	182	275	3	-	-	-	-	-	-	182	275	3		
	Amhara	North Shewa (R3)	Minjar Shekora	Conflict	42	159	1	1,108	3	-	-	-	-	-	320	1,267	4		
	Amhara	North Shewa (R3)	Menz Keya Gabriel	Conflict	345	1,723	2	-	-	104	437	2	-	-	449	2,160	4		
	Amhara	North Shewa (R3)	Debrebirhan City Administration	Conflict	1,042	5,689	5	74	310	1	2,795	11,361	7	-	3,911	17,360	13		
	Amhara	North Shewa (R3)	Menz Gera Midir	Conflict	-	129	360	2	79	245	2	-	-	-	208	605	4		
	Amhara	North Shewa (R3)	Ensarso	Conflict	33	337	999	2	91	194	1	-	-	-	461	1,284	4		
	Amhara	North Shewa (R3)	Morerna Jiru	Conflict	-	-	-	-	373	1,350	1	-	-	-	420	1,491	2		
	Amhara	North Shewa (R3)	Alaye City Administration	Conflict	-	-	-	-	84	204	2	-	-	-	84	204	2		
	Amhara	North Shewa (R3)	Eferatana Oldem	Conflict	-	-	-	-	987	3,785	4	-	-	-	987	3,785	4		
	Amhara	North Shewa (R3)	Shoa Robit City Administration	Conflict	-	-	-	-	98	182	1	-	-	-	98	182	1		
	Amhara	North Shewa (R3)	Alen Ketema Administration	Conflict	-	182	745	3	-	-	-	-	-	-	182	745	3		
	Amhara	North Shewa (R3)	Antsokya	Conflict	-	-	-	-	102	481	2	-	-	-	102	481	2		
	Amhara	North Shewa (R3)	Mida Wereemo	Conflict	-	-	-	-	-	-	-	-	-	-	33	76	1		
	Amhara	North Shewa (R3)	Menz Mama Midir	Landslide	-	42	164	1	-	-	-	-	-	-	42	164	1		
	Amhara	North Wollo	Habru	Conflict	241	770	5	-	-	44	123	1	-	-	285	893	6		
	Amhara	North Wollo	Wadla	Conflict	57	179	1	-	-	-	-	-	-	-	57	179	1		
	Amhara	North Wollo	Guba Lafto	Conflict	190	497	4	-	-	-	-	-	-	-	190	497	4		
	Amhara	North Wollo	Kobo	Conflict	746	2,247	13	207	803	2	-	-	6,975	-	7,928	29,968	19		
	Amhara	North Wollo	Meresa City Administration	Conflict	-	98	237	1	-	-	-	-	-	-	98	237	1		
	Amhara	North Wollo	Woldiya City Administration	Conflict	111	378	4	35	97	1	59	138	1	-	205	613	6		
	Amhara	North Wollo	Hara City Administration	Conflict	55	173	2	-	-	-	-	-	-	-	55	173	2		
	Amhara	North Wollo	Lalibela City Administration	Conflict	386	1,203	5	-	-	-	-	-	-	-	386	1,203	5		
	Amhara	North Wollo	Lasta	Conflict	100	338	2	315	951	3	147	422	2	-	562	1,711	7		
	Amhara	North Wollo	Melet	Conflict	461	1,691	4	35	138	1	-	-	-	-	496	1,829	5		
	Amhara	North Wollo	Gashena City Administration	Conflict	114	401	1	-	-	-	-	-	-	-	114	401	1		
	Amhara	Oromia	Raya Kobo	Conflict	-	-	-	-	75	300	1	-	-	-	75	300	1		
	Amhara	South Gonder	Artuma Fursi	Conflict	-	-	-	-	459	1,944	3	-	-	-	459	1,944	3		
	Amhara	South Gonder	Anda Bet	Conflict	449	1,907	3	276	765	1	-	-	-	-	725	2,672	4		
	Amhara	South Gonder	Debre Tabor City Administration	Conflict	1,114	4,217	6	-	-	82	303	1	-	-	1,196	4,520	7		
	Amhara	South Gonder	Estie	Conflict	733	3,381	6	120	600	1	-	-	-	-	853	3,981	7		
	Amhara	South Gonder	Farta	Conflict	180	653	1	101	417	1	-	-	-	-	281	1,070	2		
	Amhara	South Gonder	Addis Zemen City Administration	Conflict	206	579	4	-	-	-	-	-	-	-	206	579	4		
	Amhara	South Gonder	Dera	Conflict	217	896	2	-	-	-	-	-	-	-	217	896	2		
	Amhara	South Gonder	Guna Begemedir	Conflict	129	476	1	-	-	-	-	-	-	-	129	476	1		
	Amhara	South Gonder	Nefsa Meawiche city Administration	Conflict	343	1,042	2	-	-	-	-	-	-	-	343	1,042	2		
Amhara	South Gonder	Sede Muja	Conflict	-	1,299	5,899	2	-	-	-	-	-	-	1,299	5,899	2			
Amhara	South Gonder	Woreta City Administration	Conflict	-	462	1,643	3	-	-	-	-	-	-	462	1,643	3			
Amhara	South Gonder	Mekane Yesus City Administration	Conflict	1,480	6,153	3	-	-	-	-	-	-	-	1,480	6,153	3			
Amhara	South Gonder	Hemust City Administration	Conflict	-	-	-	-	256	1	-	-	-	-	79	256	1			
Amhara	South Gonder	Wedgeda City Administration	Conflict	634	3,166	2	-	-	-	-	-	-	-	634	3,166	2			
Amhara	South Gonder	Simada	Conflict	575	2,788	8	-	-	-	-	-	-	-	575	2,788	8			
Amhara	South Gonder	Ebenat	Conflict	-	155	726	2	82	473	1	-	-	-	237	1,199	3			
Amhara	South Gonder	Lay Gayint	Conflict	172	433	2	-	-	-	-	-	-	-	172	433	2			
Amhara	South Gonder	Tach Gayint	Conflict	299	1,246	2	-	-	-	-	-	-	-	299	1,246	2			
Amhara	South Wollo	Kalu	Conflict	198	712	2	-	-	323	965	1	-	-	521	1,677	3			
Amhara	South Wollo	Borena	Conflict	22	727	3	-	-	473	1,919	6	-	-	635	2,646	9			
Amhara	South Wollo	Thehulederie	Conflict	162	52	1	155	537	1	357	1,184	1	-	534	1,773	3			
Amhara	South Wollo	Jama	Conflict	110	344	1	-	-	-	-	-	-	-	110	344	1			
Amhara	South Wollo	Ambase	Conflict	36	144	1	-	-	73	280	2	-	-	109	424	3			
Amhara	South Wollo	Were illu city Administration	Conflict	-	80	259	1	-	-	-	-	-	-	80	259	1			
Amhara	South Wollo	Kelela	Conflict	30	93	1	-	-	-	-	-	-	-	145	484	3			



Displacement Tracking Matrix (DTM) Emergency Site Assessment Round 9 (10 January- 15 February 2022) - Summary Table of Displacement

Round	Region	Zone	Woreda	Cause	Before 2020			During 2020			During 2021			In 2022			Total HH	Total Individuals	Total Sites
					HH	Individuals	Sites	HH	Individuals	Sites	HH	Individuals	Sites	HH	Individuals	Sites			
Emergency Site Assessment Round 9 (10 January- 15 February 2022)	Amhara	South Wollo	Kutaber	Conflict	-	-	-	-	141	484	1	-	-	-	141	484	1		
	Amhara	South Wollo	Tenta	Conflict	-	-	-	-	286	1,116	8	-	-	-	286	1,116	8		
	Amhara	South Wollo	Worebaba	Conflict	-	-	-	-	134	670	1	-	-	-	134	670	1		
	Amhara	South Wollo	Legheda	Conflict	-	-	-	-	32	142	1	-	-	-	32	142	1		
	Amhara	Special Woreda	Agebaba	Conflict	-	-	-	494	1,701	3	-	-	-	-	494	1,701	3		
	Amhara	Wage Himra	Dehana	Conflict	-	-	-	218	687	4	58	292	1	160	960	1			
	Amhara	Wage Himra	Gaz Gibla	Conflict	180	766	2	30	180	1	-	-	-	-	210	946	3		
	Amhara	Wage Himra	Sahla	Conflict	92	275	1	390	1,592	1	106	531	1	-	588	2,398	3		
	Amhara	Wage Himra	Sekota City Administration	Conflict	-	-	-	99	335	2	160	370	1	-	259	705	3		
	Amhara	West Gojam	Sekela	Conflict	3,381	15,965	10	1,093	4,483	3	40	190	1	-	4,514	20,638	14		
	Amhara	West Gojam	Dega Damot	Conflict	7,836	38,129	18	-	-	620	3,120	2	-	-	8,456	41,249	20		
	Amhara	West Gojam	Quarit	Conflict	7,630	42,320	18	-	-	451	2,566	2	-	-	8,081	44,886	20		
	Amhara	West Gojam	Jabi Tehnan	Conflict	1,899	9,408	15	47	260	1	78	384	1	-	2,024	10,052	17		
	Amhara	West Gojam	Wemberma	Conflict	91	516	1	88	393	2	34	150	1	-	213	1,059	4		
	Amhara	West Gojam	Finete Selam City Administration	Conflict	497	3,086	5	-	-	-	-	-	-	-	497	3,086	5		
	Amhara	West Gojam	Gonji	Conflict	2,326	9,255	12	-	-	-	-	-	-	-	2,326	9,255	12		
	Amhara	West Gojam	Yilmana Densa	Conflict	420	1,959	4	-	-	-	-	-	-	-	420	1,959	4		
	Amhara	West Gojam	Bure	Conflict	1,184	4,761	5	-	-	103	407	2	-	-	1,287	4,668	7		
	Amhara	West Gojam	Dembacha	Conflict	1,434	7,898	7	-	-	1,249	3	-	-	-	1,661	9,147	10		
	Amhara	West Gojam	Debab Achefer	Conflict	235	872	2	-	-	-	-	-	-	-	235	872	2		
	Amhara	West Gojam	Merawi Town	Conflict	144	619	2	-	-	-	-	-	-	-	144	619	2		
	Amhara	West Gojam	Adet	Conflict	680	3,317	5	-	-	-	-	-	-	-	680	3,317	5		
	Amhara	West Gojam	Bura City Administration	Conflict	1,888	11,953	7	-	-	-	-	-	-	-	1,888	11,953	7		
	Amhara	West Gojam	Debab Mecha	Conflict	1,190	4,449	5	-	-	-	-	-	-	-	1,190	4,449	5		
	Amhara	West Gojam	Semen Mecha	Conflict	138	643	1	-	-	-	-	-	-	-	138	643	1		
	Amhara	West Gondar	Metema	Conflict	-	-	-	84	295	1	166	625	1	-	250	920	2		
	Amhara	West Gondar	Midre Genet	Conflict	-	-	-	47	186	1	-	-	-	-	47	186	1		
Amhara Total					49,461	228,423	276	23,312	87,051	179	27,531	104,570	95	12,353	42,485	10	112,657	462,529	560

Displacement Tracking Matrix (DTM) Emergency Site Assessment Round 8 (August 2021) - Summary Table of Displacement

Round	Region	Zone	Words	Cause	Before 2020			During 2020			During 2021			In 2022	Total HH	Total Individuals	Total Sites
					HH	Individuals	Sites	HH	Individuals	Sites	HH	Individuals	Sites				
Emergency Site Assessment Round 8 (August 2021)	Tigray	Central	Abiyaddi	Conflict	-	-	-	2,904	9,418	4	7,736	26,329	11	-	10,640	35,747	15
	Tigray	Central	Adwa	Conflict	-	-	-	33,721	194,705	12	894	4,305	1	-	34,615	199,010	13
	Tigray	Central	Ahferom	Conflict	1,091	3,131	5	2,447	6,948	10	-	-	-	-	3,538	10,079	15
	Tigray	Central	Axum	Conflict	-	-	-	26,230	138,503	16	120	120	1	-	26,350	138,623	17
	Tigray	Central	Kola Temben	Conflict	-	-	-	-	-	-	771	1,620	1	-	771	1,620	1
	Tigray	Central	Tanqua Abergele	Conflict	-	-	-	551	1,930	8	-	-	-	-	551	1,930	8
	Tigray	Central	Laelay Maychew	Conflict	2,808	6,826	6	-	-	-	-	-	-	-	2,808	6,826	6
	Tigray	Central	Tashay Maychew	Conflict	1,812	8,013	4	315	1,698	3	-	-	-	-	2,127	9,711	7
	Tigray	Central	Gater Adwa	Conflict	435	695	6	20	20	1	-	-	-	-	455	715	7
	Tigray	Central	Abergele yechilla	Conflict	475	1,156	1	205	424	3	46	125	2	-	726	1,705	6
	Tigray	Central	Adiet	Conflict	719	3,149	1	4,330	21,360	7	-	-	-	-	5,049	24,509	8
	Tigray	Central	Alsa'a	Conflict	-	-	-	439	1,096	5	-	-	-	-	439	1,096	5
	Tigray	Central	Chila	Conflict	1,668	8,076	3	196	1,001	1	-	-	-	-	1,864	9,077	4
	Tigray	Central	Egita	Conflict	382	630	2	115	295	1	-	-	-	-	497	905	3
	Tigray	Central	Embasnetli	Conflict	223	429	1	328	4,683	7	-	-	-	-	551	4,312	9
	Tigray	Central	Abrahamma	Conflict	1,652	5,854	2	2,591	20,554	4	-	-	-	-	4,243	30,798	4
	Tigray	Central	Erdebi	Conflict	374	1,869	1	1,287	2,567	6	-	-	-	-	1,661	4,436	7
	Tigray	Central	Habale	Conflict	185	584	1	722	1,117	5	-	-	-	-	907	1,701	6
	Tigray	Central	Keih tekli	Conflict	-	-	-	898	4,108	4	-	-	-	-	898	4,108	4
	Tigray	Central	Rama Adi arbaete	Conflict	-	-	-	739	3,258	8	-	-	-	-	739	3,258	8
	Tigray	Central	Malinketal	Conflict	-	-	-	759	3,258	8	-	-	-	-	759	3,258	8
	Tigray	Central	Nedler	Conflict	79	198	1	-	-	-	-	-	-	-	79	198	1
	Tigray	Central	Adigrat Town	Conflict	-	-	-	17,038	78,116	12	-	-	-	-	17,038	78,116	12
	Tigray	Eastern	Ganta Alethum	Conflict	610	2,443	8	-	-	-	-	-	-	-	610	2,443	8
	Tigray	Eastern	Gulomekeda	Conflict	1,229	5,539	4	38	173	1	-	-	-	-	1,267	5,712	5
	Tigray	Eastern	Hawzen	Conflict	2,501	7,892	6	1,698	3,320	3	621	1,923	5	-	3,474	11,222	10
	Tigray	Eastern	Wukro Town	Conflict	-	-	-	203	339	6	-	-	-	-	203	339	6
	Tigray	Eastern	Kelete Awelallo	Conflict	136	347	3	1,506	5,278	5	-	-	-	-	1,642	10,603	9
	Tigray	Eastern	Atsbi	Conflict	246	888	1	1,356	4,187	5	-	-	-	-	1,602	5,075	6
	Tigray	Eastern	Bret	Conflict	-	-	-	1,955	8,985	5	40	162	1	-	2,095	9,147	6
	Tigray	Eastern	Endsilase Town	Conflict	-	-	-	312	580	4	-	-	-	-	312	580	4
	Tigray	Eastern	Fiwewayh Town	Conflict	124	279	1	784	2,710	4	-	-	-	-	908	3,258	5
	Tigray	Eastern	Hawzen Town	Conflict	-	-	-	1,691	7,695	5	-	-	-	-	1,691	7,695	5
	Tigray	Eastern	Sewha's Sast'e	Conflict	694	2,894	2	1,712	3,583	2	-	-	-	-	2,406	10,589	7
	Tigray	Eastern	Tsaledimba	Conflict	5,071	10,628	5	112	583	2	124	612	4	-	6,285	14,211	7
	Tigray	Eastern	Tigraie Wenbera	Conflict	67	219	1	135	350	6	104	464	4	-	303	1,046	6
	Tigray	Eastern	Edaga James Town	Conflict	-	-	-	1,553	5,517	5	1,508	5,517	5	-	3,061	11,034	7
	Tigray	Mekele	Adigrat Sub City	Conflict	-	-	-	626	3,542	5	1,508	5,517	5	-	2,134	9,034	10
	Tigray	Mekele	Adigrat Sub City	Conflict	-	-	-	9,511	40,785	7	4,524	21,408	4	-	14,035	62,193	11
	Tigray	Mekele	Haweti Sub City	Conflict	-	-	-	9,711	49,555	7	1,603	7,769	3	-	11,314	56,815	10
	Tigray	Mekele	Kedama Weyane Sub City	Conflict	-	-	-	4,816	17,922	5	1,572	7,198	4	-	6,388	25,120	9
	Tigray	Mekele	Qulha Subcity	Conflict	-	-	-	1,326	3,284	3	182	498	2	-	1,508	3,782	5
	Tigray	Mekele	Senen Sub City	Conflict	-	-	-	13,127	57,639	6	1,871	9,035	4	-	14,998	66,674	10
	Tigray	North Western	Tashay Koraro	Conflict	-	-	-	19,970	81,590	32	3,476	13,842	3	-	23,446	95,432	35
	Tigray	North Western	Adi Daero	Conflict	481	2,762	1	3,331	21,956	8	130	806	1	-	3,942	25,524	10
	Tigray	North Western	Endabaguna	Conflict	-	-	-	5,067	30,110	3	-	-	-	-	5,067	30,110	3
	Tigray	North Western	Laelay Koraro	Conflict	650	3,204	1	758	3,608	2	-	-	-	-	1,408	6,812	3
Tigray	North Western	Seymet Adayabo	Conflict	2,422	15,935	1	117	451	2	574	2,899	1	-	3,113	19,285	4	
Tigray	North Western	Shire	Conflict	3,423	17,818	1	41,988	227,253	9	3,619	25,442	10	-	49,030	270,513	20	
Tigray	North Western	Tambala	Conflict	656	1,988	3	35,093	165,547	15	8,357	40,935	9	-	43,450	206,482	24	
Tigray	North Western	Zana	Conflict	-	-	-	727	2,908	2	-	-	-	-	727	2,908	2	
Tigray	North Western	Maekei Adayabo	Conflict	-	-	-	783	4,113	5	265	1,355	2	-	1,048	5,468	7	
Tigray	North Western	Agdele	Conflict	-	-	-	16,497	93,152	9	-	-	-	-	16,497	93,152	9	
Tigray	North Western	Tashay Adiyabo	Conflict	-	-	-	5,964	42,250	2	500	2,835	1	-	6,464	45,085	5	
Tigray	South East	Endera	Conflict	1,294	4,530	5	118	404	3	861	2,645	11	-	2,273	7,579	19	
Tigray	South East	Adigudom	Conflict	-	-	-	662	2,761	4	73	359	1	-	735	3,120	5	
Tigray	South East	Digua Temben	Conflict	94	178	1	178	527	6	116	551	1	-	272	705	7	
Tigray	South East	Hagroselam	Conflict	390	1,132	3	118	460	5	116	551	1	-	494	1,683	6	
Tigray	South East	Imba	Conflict	268	698	2	-	-	-	43	252	1	-	411	1,150	3	
Tigray	South East	Sebariti	Conflict	-	-	-	414	1,397	4	20	44	1	-	434	1,438	5	
Tigray	South East	Wejrat	Conflict	933	3,575	1	-	-	-	-	-	-	-	933	3,575	1	
Tigray	South East	Erdamehoni	Conflict	899	2,098	6	39	125	3	136	396	1	-	1,074	2,619	8	
Tigray	South East	Korero Town	Conflict	-	-	-	566	1,872	3	-	-	-	-	566	1,872	3	
Tigray	South East	Maychew	Conflict	-	-	-	1,263	4,221	4	-	-	-	-	1,263	4,221	4	
Tigray	South East	Raya Alamata	Conflict	1,036	2,362	5	786	2,528	4	257	735	3	-	2,079	5,625	12	
Tigray	South East	Raya Arzabo	Conflict	632	2,047	5	35	132	1	-	-	-	-	667	2,279	6	
Tigray	South East	Ofla	Conflict	440	2,091	3	309	1,464	6	-	-	-	-	749	3,555	9	
Tigray	South East	Imba Alaje	Conflict	960	2,584	3	1,542	4,680	8	99	221	1	-	2,601	7,485	12	
Tigray	South East	Alamata Town	Conflict	-	-	-	2,025	6,821	4	-	-	-	-	2,025	6,821	4	
Tigray	South East	Raya Chercher	Conflict	221	655	2	-	-	-	282	592	1	-	503	1,247	3	
Tigray	South East	Mekoni Town	Conflict	390	1,367	1	142	593	1	-	-	-	-	532	1,960	2	
Tigray Total					39,101	142,448	111	303,692	1,477,730	361	41,108	182,103	102	-	383,901	1,801,981	574



# ANNEX B

## SUMMARY TABLE OF RETURN Village Assessment Survey

Village Assessment Survey (VAS) Round 11 - from 1 December 2021 - 15 February 2022 - National Summary Table



Region	Zone	Woreda	# of Assessed Villages		Returning IDPs		Returned Migrants (Individual)		Host/Receiving Community		Other Population		Total Hits	Total Individuals
			Household	Individual	Household	Individual	Household	Individual	Household	Individual				
Afar	Awsa (Zone 1)	Aysaita	2	205	1,145	-	-	-	-	-	-	205	1,145	
Afar	Awsa (Zone 1)	Dubti	1	65	390	-	-	-	-	-	-	65	390	
Afar	Awsa (Zone 1)	Gerani	1	100	600	-	-	-	-	-	-	100	600	
Afar	Awsa (Zone 1)	Chifra	29	4,351	26,106	-	-	-	-	-	-	4,351	26,106	
Afar	Fent (Zone 4)	Anra	5	1,135	6,607	-	-	-	-	-	-	1,135	6,607	
Afar	Fent (Zone 4)	Guina	6	1,535	9,220	-	57	-	317	-	-	1,592	9,537	
Afar	Fent (Zone 4)	Yalo	5	1,233	7,398	-	-	-	-	-	-	1,233	7,398	
Afar	Fent (Zone 4)	Ewa	15	1,707	10,092	-	-	-	-	-	-	1,707	10,092	
Afar	Gabi (Zone 3)	Ambara	6	1,463	8,778	-	218	-	1,308	-	-	1,681	10,086	
Afar	Gabi (Zone 3)	Awash Fentale	2	230	1,380	-	-	-	-	-	-	230	1,380	
Afar	Gabi (Zone 3)	Gewane	1	160	960	-	-	-	-	-	-	160	960	
Afar	Gabi (Zone 3)	Hanruka	1	450	2,700	-	200	-	1,200	-	-	650	3,900	
Afar	Hari (Zone 5)	Hadelela	5	984	5,904	-	-	-	-	-	-	984	5,904	
<b>Afar Total</b>			<b>79</b>	<b>13,618</b>	<b>81,280</b>	<b>475</b>	<b>2,825</b>	<b>14,093</b>	<b>84,105</b>	<b>14,093</b>	<b>84,105</b>	<b>14,093</b>	<b>84,105</b>	
Amhara	Central Gondar	Chilga 1	4	1,269	5,470	-	-	-	-	-	-	1,269	5,470	
Amhara	Central Gondar	Chilga 2	12	4,238	15,675	-	-	-	-	-	-	4,238	15,675	
Amhara	Central Gondar	East Dembera	3	355	1,585	-	-	-	-	-	-	355	1,585	
Amhara	Central Gondar	Gonder Zuria	7	1,010	4,919	-	-	-	-	-	-	1,010	4,919	
Amhara	Central Gondar	Tach Armacheho	11	1,135	4,945	-	2,120	-	6,381	-	-	1,010	4,919	
Amhara	North Gondar	Debarq	4	569	2,180	-	-	-	-	-	-	569	2,180	
Amhara	North Gondar	Addi Arekay	8	1,458	6,125	-	-	-	-	-	-	1,458	6,125	
Amhara	North Gondar	Dabat	4	660	1,385	-	-	-	-	-	-	660	1,385	
Amhara	North Shewa (R3)	Shoa Robit City Administration	40	18,079	72,329	-	4,094	-	15,570	-	-	22,173	87,899	
Amhara	North Shewa (R3)	Eferatana Gidem	49	16,754	75,987	-	1,646	-	5,346	-	-	18,400	81,358	
Amhara	North Shewa (R3)	Alaye City Administration	32	11,383	53,547	-	-	-	-	-	-	11,383	53,547	
Amhara	North Shewa (R3)	Kewet	23	5,262	20,188	-	3,955	-	18,884	-	-	9,217	39,072	
Amhara	North Shewa (R3)	Antsokhya	13	2,160	10,266	-	2,416	-	10,254	-	-	4,576	20,520	
Amhara	North Shewa (R3)	Menz Gera Midir	33	13,988	59,700	-	575	-	2,145	-	-	14,563	61,845	
Amhara	North Shewa (R3)	Tarema Ber	34	9,956	37,390	-	533	-	2,654	-	-	10,489	40,044	
Amhara	North Shewa (R3)	Menz Keya Gabriel	12	2,172	10,704	-	-	-	-	-	-	2,172	10,704	
Amhara	North Shewa (R3)	Mojan Wedera	40	10,151	37,442	-	-	-	-	-	-	10,151	37,442	
Amhara	North Shewa (R3)	Menz Mama Midir	67	19,596	81,947	-	718	-	2,456	-	-	20,314	84,403	
Amhara	North Shewa (R3)	Mebsai Mebsai City Administration	25	6,500	25,190	-	-	-	-	-	-	6,500	25,190	
Amhara	North Wollo	Gidan	19	7,161	29,858	-	377	-	1,898	-	-	7,538	31,956	
Amhara	North Wollo	Guba Lafto	31	8,174	33,310	-	10,920	-	45,507	-	-	19,094	79,556	
Amhara	North Wollo	Raya Kobo	34	17,233	69,793	-	4,910	-	18,590	-	-	22,143	89,660	
Amhara	North Wollo	Lasta	11	5,816	21,166	-	2,020	-	9,420	-	-	7,836	30,586	
Amhara	North Wollo	Habru	35	37,605	117,887	-	3,044	-	4,866	-	-	42,471	146,639	
Amhara	North Wollo	Laibela City Administration	10	4,255	14,506	-	3,464	-	14,504	-	-	7,719	29,010	
Amhara	North Wollo	Meket	19	7,060	28,163	-	-	-	-	-	-	7,060	28,163	
Amhara	North Wollo	Wadla	20	11,130	44,813	-	299	-	1,879	-	-	11,429	46,743	
Amhara	North Wollo	Kobo	16	8,928	35,813	-	640	-	37,743	-	-	38,383	147,196	
Amhara	North Wollo	Woldiya City Administration	32	12,382	50,168	-	1,001	-	24,621	-	-	37,003	132,209	
Amhara	North Wollo	Mersa City Administration	14	8,655	34,866	-	5,866	-	23,788	-	-	14,521	65,595	
Amhara	North Wollo	Fiakt City Administration	4	3,690	13,849	-	1,998	-	6,560	-	-	5,688	20,409	
Amhara	North Wollo	Gazo	1	53	184	-	474	-	1,684	-	-	527	1,923	
Amhara	Oromia	Artuma Fursi	12	3,273	5,426	-	-	-	-	-	-	3,273	5,426	
Amhara	Oromia	Kemissie City Administration	25	1,651	5,147	-	166	-	67,223	-	-	15,450	72,536	
Amhara	Oromia	Jille Timuga	12	981	4,625	-	-	-	-	-	-	981	4,625	
Amhara	Oromia	Dewa Cheffa	26	12,497	37,491	-	1,608	-	10,473	-	-	14,105	48,091	

Region	Zone	Woreda	# of Assessed Villages	Returning IDPs		Returned Migrants (Individual)	Host/Receiving Community		Other Population		Total HHs	Total Individuals
				Household	Individual		Household	Individual	Household	Individual		
Amhara	South Gondar	Lay Gayint	34	12,572	47,478	-	-	-	-	12,572	47,478	
Amhara	South Gondar	Farta	19	3,009	12,152	-	-	-	-	3,009	12,152	
Amhara	South Gondar	Guna Begemidir	19	4,516	21,379	-	-	-	-	4,516	21,379	
Amhara	South Gondar	Nefas Meswicha city Administration	12	6,891	23,788	-	-	-	-	6,891	23,788	
Amhara	South Gondar	Debre Tabor City Administration	1	210	788	-	369	1,822	-	579	2,610	
Amhara	South Wollo	Kalu	33	9,173	40,603	-	9,194	41,505	-	18,367	82,108	
Amhara	South Wollo	Albuko	18	2,568	11,709	-	2,004	9,237	-	2,568	11,709	
Amhara	South Wollo	Tenta	28	8,713	34,187	-	4,990	22,758	-	10,717	43,424	
Amhara	South Wollo	Were Ilu	26	7,925	33,160	-	1,715	8,111	-	12,915	55,918	
Amhara	South Wollo	Legambo	39	6,489	28,626	1,068	3,055	13,619	-	9,247	37,805	
Amhara	South Wollo	Jama	14	6,192	24,022	-	200	902	-	856	4,077	
Amhara	South Wollo	Were Ilu city Administration	4	656	3,175	-	3,122	16,003	-	8,110	37,554	
Amhara	South Wollo	Thehulederie	40	4,988	21,551	-	-	-	-	3,710	17,202	
Amhara	South Wollo	Worebabu	23	3,710	17,202	-	-	-	-	7,738	27,921	
Amhara	South Wollo	Dessie Zuria	17	5,986	18,019	-	1,752	9,902	-	2,400	11,379	
Amhara	South Wollo	Hayeq City Administration	5	512	2,480	-	1,888	8,899	-	12,017	51,162	
Amhara	South Wollo	Kutaaber	21	7,627	30,686	-	4,390	20,476	-	5,953	23,074	
Amhara	South Wollo	Kelela	27	5,182	16,529	2,976	771	3,569	-	11,450	44,272	
Amhara	South Wollo	Ambasel	7	4,681	12,825	-	6,769	31,447	-	3,009	11,992	
Amhara	Wag Himra	Dehana	9	2,939	11,690	-	70	302	-	150	750	
Amhara	Wag Himra	Sekota	1	150	750	-	60	250	-	1,419	4,510	
Amhara	Wag Himra	Sekota City Administration	7	1,359	4,260	-	-	-	-	220	1,100	
Amhara	Wag Himra	Gaz Gibla	4	220	1,100	-	293	1,495	150	581	2,333	
Amhara	West Gondar	Metema	6	138	688	-	1,504	7,683	-	1,806	9,188	
Amhara	West Gondar	Genda Weha City Administration	4	302	1,505	-	500	2,500	-	610	3,050	
Amhara	West Gondar	Metema Yohanes City Administration	4	110	550	-	148,211	616,187	690	532,958	2,124,128	
Amhara Total			1,164	384,057	1,494,882	12,369				5,509	27,104	
Beneshangul Gumuz	Asosa	Blidigilu	43	5,509	27,104	-	-	-	-	5,509	27,104	
Beneshangul Gumuz Total			43	5,509	27,104	-	-	-	-	5,509	27,104	
Dire Dawa	Dire Dawa Rural Clu	Jeldessa	2	106	530	-	-	-	-	106	530	
Dire Dawa Total			2	106	530	-	-	-	-	1,378	6,892	
Gambella	Agnuak	Jore	1	1,378	6,892	-	-	-	-	2,077	10,280	
Gambella	Agnuak	Gambella Zuria	8	557	2,784	-	1,520	7,496	-	785	3,923	
Gambella	Agnuak	Gog	3	71	343	-	714	3,580	-	850	4,225	
Gambella	Itang Special Woreda	Itang	11	496	2,455	-	354	1,770	-	68	186	
Gambella	Majang	Godere	1	68	186	-	-	-	-	763	3,815	
Gambella	Nuer	Makuey	3	763	3,815	-	-	-	-	5,921	29,321	
Gambella Total			27	3,333	16,475	-	2,588	12,846	-	63	315	
Hareri	Hareri	Sofi	1	63	315	-	-	-	-	82	640	
Hareri	Hareri	Dire Teyara	1	82	640	-	-	-	-	2,009	10,045	
Hareri	Hareri	Amir Nur	1	9	45	-	2,000	10,000	-	2,154	11,000	
Hareri Total			3	154	1,001	-	2,000	10,000	-	4,010	19,500	
Oromia	Arsi	Merti	3	191	1,001	-	3,819	18,499	-	2,177	12,401	
Oromia	Bale	Gura Damole	7	1,730	10,194	-	447	2,207	-	340	1,683	
Oromia	Bale	Meda Weleabu	1	304	1,511	-	36	172	-	11	63	
Oromia	Borena	Guchi	21	8,252	45,796	-	11	63	-	20,527	103,231	
Oromia	Borena	Moyale	36	20,522	103,206	-	5	25	-	425	2,125	
Oromia	Borena	Arero	3	425	2,125	-	-	-	-	400	2,000	
Oromia	Borena	Wachile	3	400	2,000	-	-	-	-	400	2,000	

Region	Zone	Woreda	# of Assessed Villages	Returning IDPs		Returned Migrants (Individual)	Host/Receiving Community		Other Population		Total HHs	Total Individuals
				Household	Individual		Household	Individual	Household	Individual		
Oromia	East Bale	Dawe Kachan	7	1,197	8,346	-	420	2,198	-	1,617	10,544	
Oromia	East Bale	Lege Hida	2	1,691	11,363	-	683	2,822	-	2,374	14,185	
Oromia	East Bale	Raytu	5	2,034	11,030	-	559	2,460	-	2,593	13,490	
Oromia	East Bale	Sevena	3	1,208	6,658	-	444	2,215	-	1,652	8,873	
Oromia	East Bale	Dawe Serer	7	1,204	6,226	-	421	1,769	-	1,625	7,995	
Oromia	East Harerge	Babile	79	9,634	47,739	178	5,235	27,191	-	14,869	75,108	
Oromia	East Harerge	Chinaksen	36	2,999	15,386	-	4,431	25,098	-	7,430	40,484	
Oromia	East Harerge	Fedis	4	729	3,678	-	-	-	-	729	3,678	
Oromia	East Harerge	Kumbi	4	4,900	18,988	-	1,781	8,732	-	6,681	27,720	
Oromia	East Harerge	Meta	6	483	2,415	55	900	4,500	-	1,383	6,970	
Oromia	East Harerge	Meyu Muluke	8	2,260	11,300	-	-	-	-	2,260	11,300	
Oromia	East Harerge	Midlega Tolb	5	463	3,001	-	-	-	-	453	3,001	
Oromia	East Wallega	Diga	2	163	846	-	195	750	-	358	1,586	
Oromia	East Wallega	Guto Gida	6	1,471	7,068	-	-	-	-	1,471	7,068	
Oromia	East Wallega	Saarga	6	2,911	15,262	-	-	-	-	2,791	15,262	
Oromia	Finfinne Special Zon	Sebeta Hawas	3	301	1,146	-	-	-	-	301	1,146	
Oromia	Guji	Odo Shaliso	17	1,163	4,994	-	6,597	34,935	-	7,760	39,229	
Oromia	Guji	Uruga	18	604	3,410	-	5,560	27,755	-	6,164	31,165	
Oromia	West Arsi	Siraro	13	3,270	3,340	-	706	3,270	-	1,400	6,610	
Oromia	West Arsi	Shaila	9	488	2,351	-	489	2,465	-	977	4,816	
Oromia	West Arsi	Gedeb Asasa	4	65	325	-	205	1,025	-	270	1,350	
Oromia	West Arsi	Adaba	2	18	90	-	109	545	-	177	635	
Oromia	West Arsi	Dordola	2	22	80	-	95	485	-	117	565	
Oromia	West Arsi	Kofele	1	30	152	-	52	262	-	82	414	
Oromia	West Arsi	Negelle Arsi City Administration	1	50	250	-	100	500	-	150	750	
Oromia	West Arsi	Qore	5	61	305	-	270	1,325	-	331	1,630	
Oromia	West Arsi	Shashemene Zuria	8	231	1,145	-	420	2,100	-	651	3,245	
Oromia	West Arsi	Shashemene Zuria	5	85	425	-	265	1,325	-	350	1,750	
Oromia	West Guji	Abaya	47	7,442	37,103	-	15,485	76,808	-	22,927	113,911	
Oromia	West Guji	Birbira Kojawa	31	2,741	19,331	-	8,296	48,601	-	11,037	67,932	
Oromia	West Guji	Bule Hora	18	1,556	10,492	-	5,984	41,051	-	7,540	51,543	
Oromia	West Guji	Gabna	43	6,593	36,489	-	10,880	63,312	-	17,473	99,801	
Oromia	West Guji	Hambela Wamena	79	6,683	39,872	-	24,025	143,885	-	30,708	183,757	
Oromia	West Guji	Kerca	32	2,411	20,624	-	9,944	64,099	-	13,385	84,733	
Oromia	West Guji	Kerca Town	10	465	4,641	-	2,632	20,325	-	3,037	24,966	
Oromia	West Guji	Suro bargida	7	967	4,836	-	1,014	5,221	-	1,981	10,057	
Oromia	West Harerge	Bordole	4	379	1,910	-	-	-	-	379	1,910	
Oromia	West Harerge	Daro Lebu	10	739	4,253	-	1,562	10,686	-	2,301	14,939	
Oromia	West Harerge	Halro	1	32	160	-	150	750	-	182	910	
Oromia	West Harerge	Hawi Gudina	17	1,860	9,212	-	1,860	9,212	-	1,860	9,212	
Oromia	West Harerge	Mieso	19	2,561	12,702	-	150	750	-	2,711	13,452	
Oromia	West Shewa	Ejere (Addis Alem)	7	606	3,079	-	-	-	-	606	3,079	
Oromia	West Wallega	Gimbi	1	217	1,048	-	-	-	-	217	1,048	
Oromia Total			668	104,075	558,904	233	114,377	650,181	-	218,452	1,709,318	
Sidama	Hawassa Ketema As Tullu Sub-City		14	3,438	19,118	-	2,071	11,250	-	5,509	30,368	
Sidama	Zone 1	Lola Abaya	1	380	2,280	-	-	-	-	380	2,280	
Sidama	Zone 1	Wondo Genet	4	1,066	4,268	-	-	-	-	1,066	4,268	
Sidama	Zone 1	Bensa	1	140	82	-	-	-	-	140	82	
Sidama Total			20	5,024	26,548	-	2,071	11,250	-	7,095	37,798	
SNNP	Alle Especial Wored Alle Especial Woreda		7	728	3,840	110	131	790	-	859	4,740	
SNNP	Amaro Special Wored Amaro Special Woreda		2	1,193	7,024	-	-	-	-	1,193	7,024	
SNNP	Derashie Especial Woreda Derashie Especial Woreda		2	3,177	22,139	30	-	-	-	3,177	22,169	
SNNP	Gamo	Mirab Abaya	3	140	840	-	-	-	-	140	840	
SNNP	Gedfo	Gedeb	35	3,765	25,774	2,498	13,247	87,640	-	17,012	115,912	
SNNP	Gedfo	Korhere	28	7,928	44,314	9,360	51,818	947	-	17,188	97,079	
SNNP	Gedfo	Wenago	3	650	3,778	350	1,110	6,155	-	1,760	10,283	
SNNP	Gedfo	Yirgachefe	42	5,557	33,107	1,737	11,883	67,819	-	17,240	102,663	
SNNP	Gedfo	Chonso	6	1,387	8,170	140	2,056	14,951	-	3,443	23,241	
SNNP	Gurage	Mareko	6	556	3,057	-	2,180	11,934	-	2,736	14,991	
SNNP	Gurage	Mirak Meskan	2	58	299	-	1,290	7,740	-	1,348	8,039	
SNNP	Hadhya	Mirak Badawacho	1	46	322	-	95	665	-	141	987	
SNNP	Halab	Wera Djo	8	780	3,415	-	121	726	-	901	4,141	
SNNP	Konso	Segen Zuria	16	5,039	31,268	-	876	5,536	-	5,915	36,804	
SNNP	Konso	Karat Zuria	11	2,963	17,908	-	-	-	-	2,963	17,908	
SNNP	Konso	Kolme Cluster	1	123	1,234	-	-	-	-	123	1,234	
SNNP	SIRI	Mirak Selhi	2	138	1,080	-	250	1,750	-	388	2,830	
SNNP	SIRI	Sekhi	3	1,550	6,943	-	476	3,113	-	2,036	9,956	
SNNP	SIRI	Alicho Woriro	1	68	612	-	250	2,250	-	318	2,862	
SNNP	Wolayita	Diguna Fango	3	380	1,900	103	357	1,651	-	717	3,654	
SNNP	Wolayita	Hobicha	2	210	1,117	122	463	2,421	-	673	3,660	
SNNP Total			184	36,136	218,041	6,037	44,125	266,939	-	80,261	491,017	



Region	Zone	Woreda	# of Assessed Villages	Returning IDPs		Returned Migrants (Individual)	Host/Receiving Community		Other Population		Total HHs	Total Individuals
				Household	Individual		Household	Individual	Household	Individual		
Somali	Dawa	Hudret	17	9,801	58,783	-	2,686	16,216	-	12,487	74,999	
Somali	Dawa	Moyale	23	43,778	263,676	-	2,899	17,394	-	46,677	280,070	
Somali	Dawa	Mubarak	1	200	1,200	-	-	-	-	200	1,200	
Somali	Erer	Lagahida	1	25	150	-	-	-	-	25	150	
Somali	Fafan	Babile	11	1,300	7,800	-	-	-	-	1,300	7,800	
Somali	Fafan	Gursum	1	70	420	-	-	-	-	70	420	
Somali	Fafan	Tulliguled	26	5,237	31,476	-	-	-	-	5,237	31,476	
Somali	Liben	Deka Seftu	3	213	1,278	-	-	-	-	213	1,278	
Somali	Shabelle	Beramo	4	1,190	7,140	110	-	-	-	1,190	7,250	
Somali	Shabelle	Kelalo	6	1,985	11,910	45	240	1,440	-	2,225	13,995	
Somali	Shabelle	Mustahl	1	400	2,400	3	-	-	-	400	2,403	
Somali	Siti	Erer	3	520	3,120	-	-	-	-	520	3,120	
<b>Somali Total</b>			<b>97</b>	<b>64,719</b>	<b>388,353</b>	<b>158</b>	<b>5,825</b>	<b>35,050</b>	<b>-</b>	<b>70,544</b>	<b>423,561</b>	
South West Ethiopia Peoples	Bench Sheko	Dehub Bench	12	2,436	11,336	-	1,116	5,359	-	3,552	16,695	
South West Ethiopia Peoples	Bench Sheko	Shay Bench	2	342	2,130	-	-	-	-	342	2,130	
South West Ethiopia Peoples	Bench Sheko	Gurafere	71	2,990	17,239	-	34	120	-	3,024	17,359	
South West Ethiopia Peoples	Keffa	Decha	4	507	3,127	-	-	-	-	507	3,127	
South West Ethiopia Peoples	Sheka	Yeki	2	335	1,514	-	-	-	-	335	1,514	
<b>South West Ethiopia Peoples Total</b>			<b>91</b>	<b>6,610</b>	<b>35,346</b>	<b>-</b>	<b>1,150</b>	<b>5,479</b>	<b>-</b>	<b>7,760</b>	<b>40,825</b>	
<b>Grand Total</b>			<b>2,378</b>	<b>623,343</b>	<b>2,848,463</b>	<b>18,797</b>	<b>320,822</b>	<b>1,610,757</b>	<b>690</b>	<b>944,313</b>	<b>4,478,707</b>	



[dtmethiopia@iom.int](mailto:dtmethiopia@iom.int)



[www.displacement.iom.int/ethiopia](http://www.displacement.iom.int/ethiopia)

