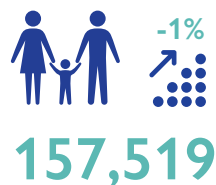


IOM manages the Displacement Tracking Matrix (DTM) in Nigeria and other countries around the world, to support humanitarian communities with data on displacement and mobility. This information management product determines the status, locations, and needs of people affected by the ongoing conflict in north-west and north-central Nigeria.

As of 30 December 2021, the DTM has identified 969,757 IDPs (157,519 households) across Benue, Kaduna, Kano, Katsina, Plateau, Nasarawa, Sokoto and Zamfara States. This represents a decrease of one per cent or more (13,944 individuals) since the Round 8 assessment.

The DTM has identified an IDP population of **969,757** individuals as of 30 December 2021

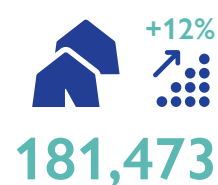
IDP households



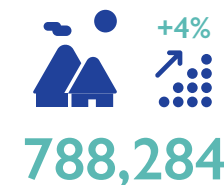
IDP individuals



IDPs in camps/camp-like settings



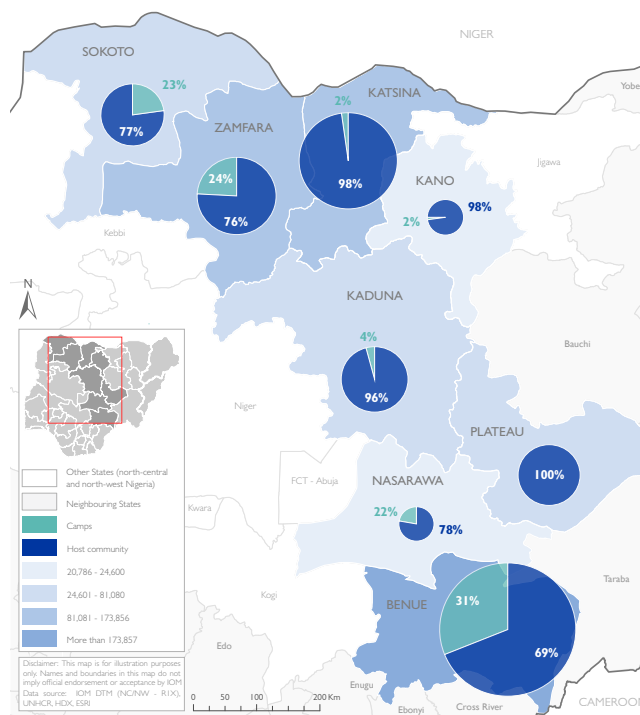
IDPs in host communities



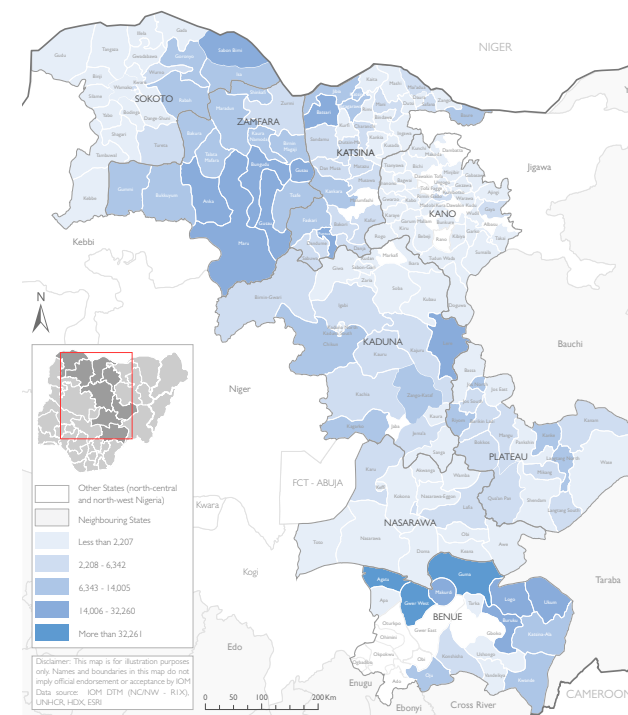
Demographic composition:



IDPs per state and settlement type



IDP presence at LGA level



Reasons for initial displacement of IDPs	%
Communal clashes	53%
Armed banditry and kidnapping	36%
Natural disasters	7%
Insurgency	4%

DISCLAIMER: The depiction and use of boundaries, geographic names, and related data shown on maps are not warranted to be error free nor do they imply judgment on the legal status of any territory, or any endorsement or acceptance of such boundaries by IOM.

For more information or to report an alert, please contact: DTM Nigeria: iomnigeriadtm@iom.int | <https://displacement.iom.int/nigeria> ; <https://dtm.iom.int/nigeria>