



# DTM

## DISPLACEMENT TRACKING MATRIX NIGERIA NORTH-EAST ZONE

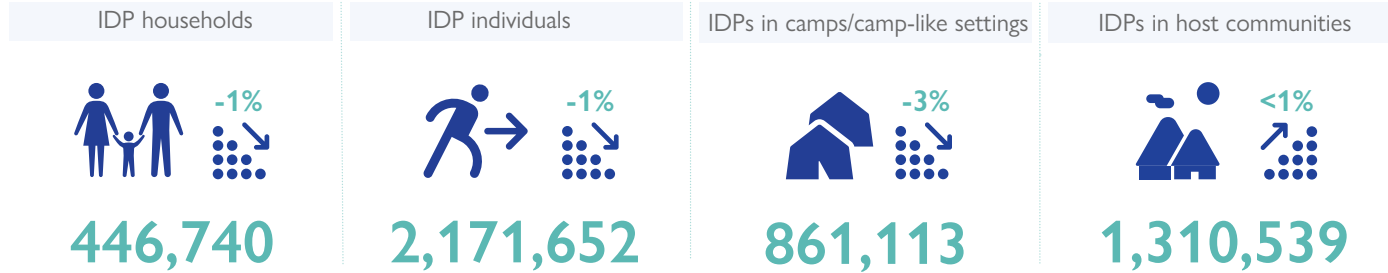
## IDP BASELINE DASHBOARD

## MARCH 2022 ROUND 40

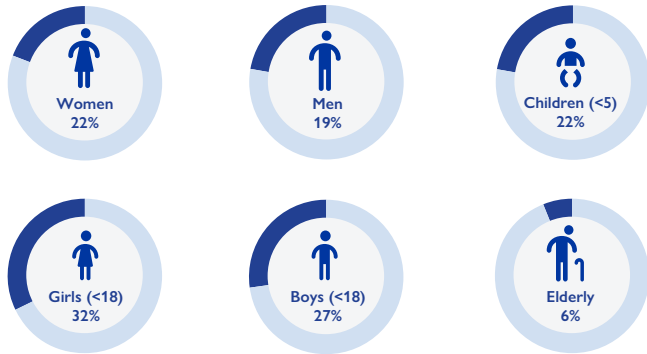
In response to the need for accurate and up-to-date information on human mobility and forced displacement in north-east Nigeria, IOM activated its Displacement Tracking Matrix (DTM) to support the Government and the humanitarian community with multi-layered data on the status, locations and needs of populations affected by the on-going conflict and communal clashes in north-east Nigeria.

During the assessment period of Round 40 (16 November to 30 December), the DTM has identified a total of 2,171,652 IDPs in 446,740 households across north-east Nigeria. This represents an increase of one per cent (or 28,705 individuals) compared to Round 39.

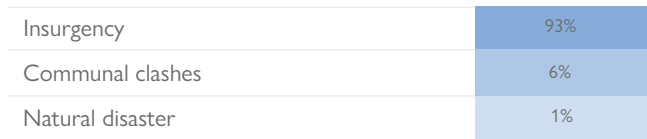
The DTM has identified an IDP population of **2,171,652** individuals as of 30 December 2022



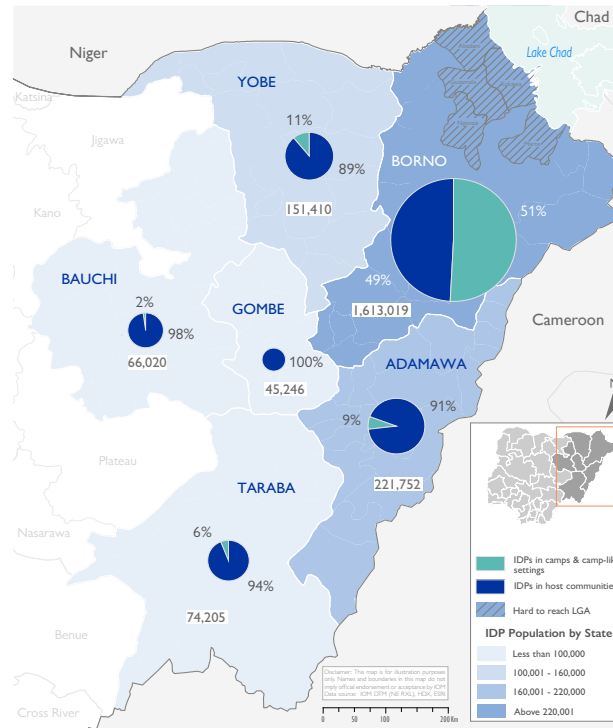
### Demographic composition:



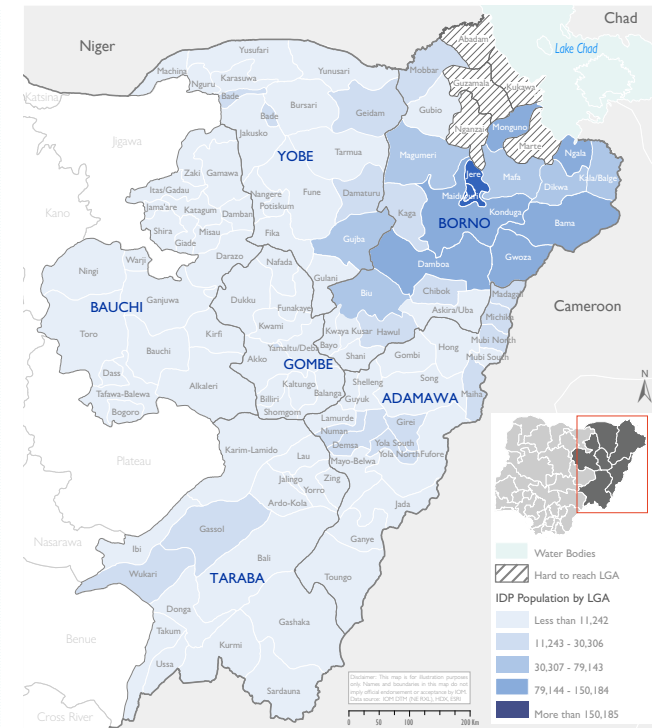
### Reasons for initial displacement of IDPs



### IDPs per state and settlement type



### IDP presence at LGA level



DISCLAIMER: The depiction and use of boundaries, geographic names, and related data shown on maps are not warranted to be error free nor do they imply judgment on the legal status of any territory, or any endorsement or acceptance of such boundaries by IOM.

For more information or to report an alert, please contact: DTM Nigeria: [iomnigeriadtm@iom.int](mailto:iomnigeriadtm@iom.int) | <https://displacement.iom.int/nigeria> ; <https://dtm.iom.int/nigeria>



**USAID**  
FROM THE AMERICAN PEOPLE