



DTM

DISPLACEMENT TRACKING MATRIX NIGERIA NORTH-EAST ZONE

RETURNEE POPULATION DASHBOARD

MARCH 2022 ROUND 40

This dashboard presents the key figures on the returnee population tracked during Round 40 of DTM assessments in Nigeria's north-east geopolitical zone. Between 16 November and 30 December 2022, an estimated 1,960,558 returnees were identified - divided in 317,885 households - across 683 return locations in the states of Borno, Adamawa and Yobe. The Round 40 figure presents an increase of 17,113 individuals or a little under one per cent compared to Round 39 when 1,943,445 returnees were identified. This dashboard highlights the number of returnees per state, the demographic composition of the returnee population in north-east Nigeria, states of displacement and reasons for initial displacement of returnees. Additionally, this dashboard presents an overview of the LGA's that witnessed major increases and decreases of returnee population compared to Round 39.

The DTM has identified a returnee population of **1,960,558** individuals as of 30 December 2022

Returnee households



317,885

Returnee individuals



1,960,558

IDP Returnees



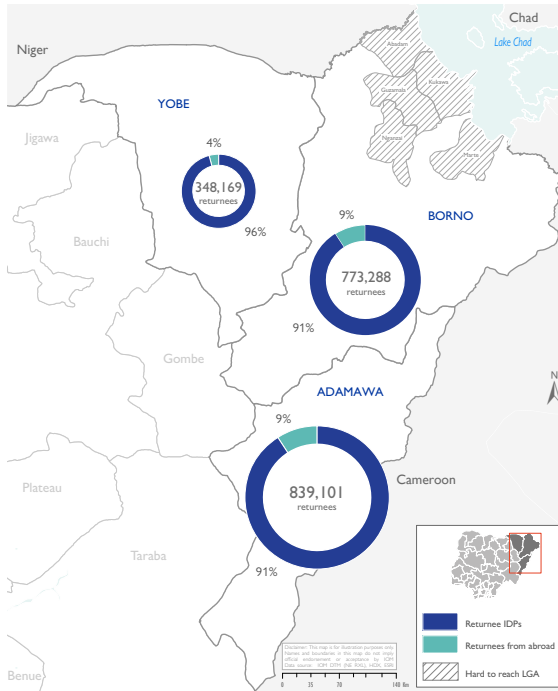
1,802,160

Returnees from abroad



158,398

Returnees by states



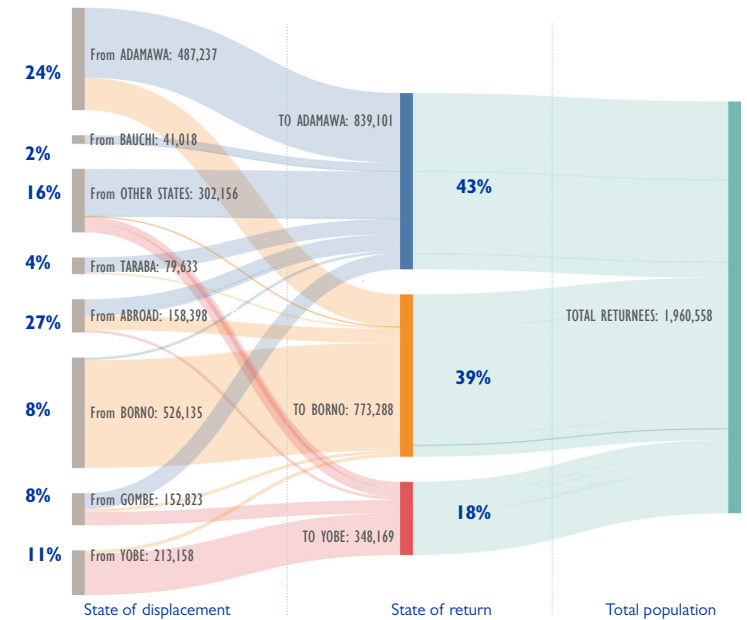
Demographic composition:



Reasons for initial displacement of returnees

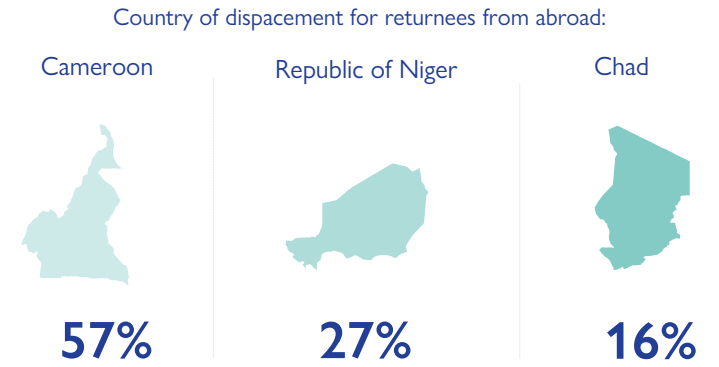
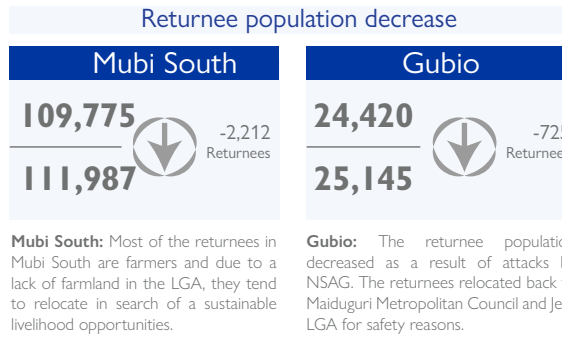
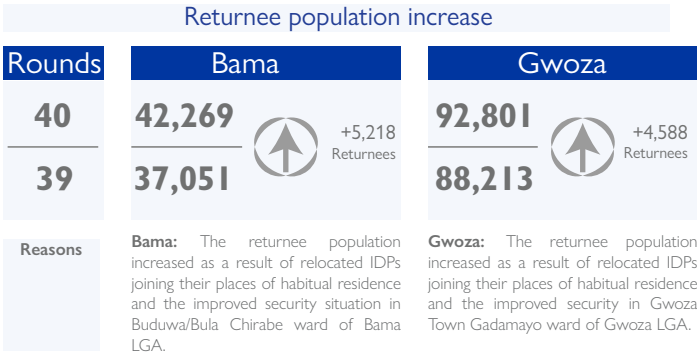
Insurgency	93%
Communal clashes	6%
Natural disaster	1%

State of displacement:

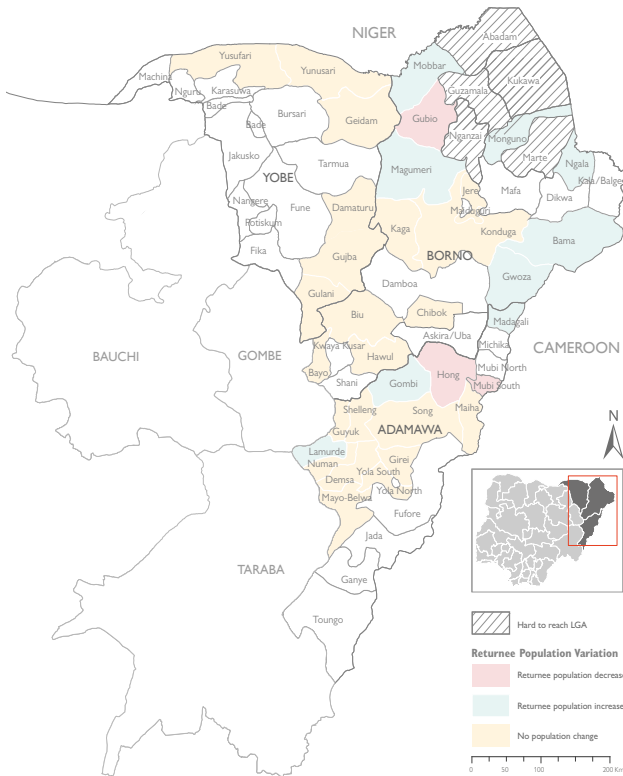


USAID
FROM THE AMERICAN PEOPLE

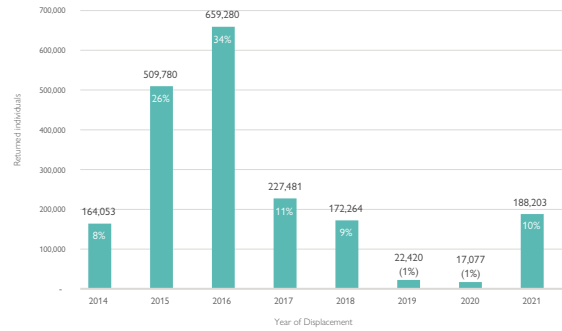
Returnee population variation between round 39 and 40 | Top LGAs with variation



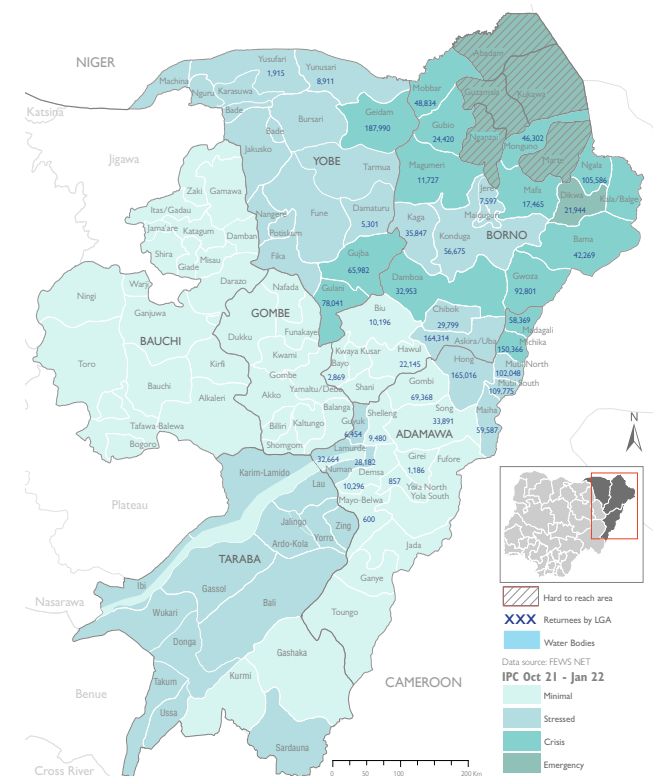
Returnee population variation



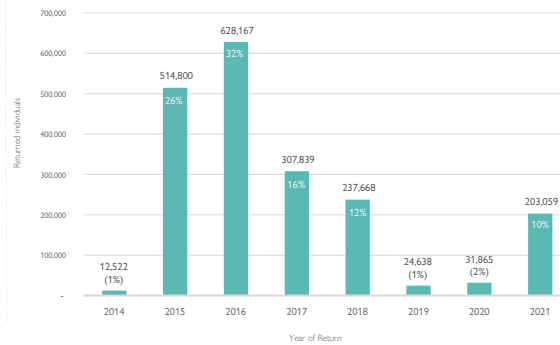
Returnees per year of displacement:



Food security levels in areas of return



Returnees per year of return:



*Return assessments are not conducted in Bauchi, Taraba & Gombe

DISCLAIMER: The depiction and use of boundaries, geographic names, and related data shown on maps are not warranted to be error free nor do they imply judgment on the legal status of any territory, or any endorsement or acceptance of such boundaries by IOM.