



IOM's Displacement Tracking Matrix (DTM) continued conducting Displacement Site Flow Monitoring (DSFM) at the gates of Wau Masna Collective Centre. In the fourth quarter of 2021, 2,082 interviews were conducted representing 3,224 individual movements into and out of the collective centre. Compared to the previous quarter, day movements saw a 21 per cent decrease from 3,987 to 3,153 individuals. These movements were driven by male travelers (66%), and the main reasons for travel were to tend to livelihood activities (58%) and to visit friends / family (14%). Temporary movements saw an 80 per cent decrease compared to the previous quarter with the main reasons being visiting friends / family (39%) and attempting to return home (25%). Fourteen per cent left the centre temporarily due to congestion and concerns related to COVID-19. The number of surveyed new arrivals increased from 7 to 20 individuals, who left their areas of departure due to conflict causing hunger (70%) or insecurity (30%). All individuals arriving newly intend to spend more than six months in the centre. DTM did not encounter persons intending to permanently leave the collective centre this reporting period.

Methodology: Displacement Site Flow Monitoring (DSFM) involves interviewing a cross-section of persons passing through the site's entry and exit points. DTM aims to provide partners with a better understanding of mobility dynamics into and out of the sites categorized as same-day movement, temporary (overnight) travel, new entries and (intended) permanent exits. Interviews are conducted seven days a week from 8 a.m. to 5 p.m. DSFM provides indicative traveller profiles rather than comprehensive or representative estimates.

December Population Count


3,006 ind. (6848 households)

 1,519 (51%) Male

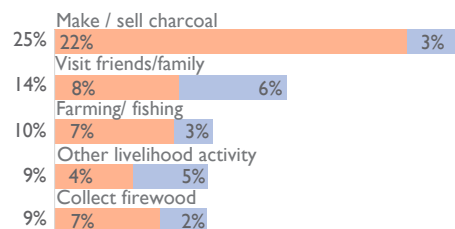
 1,487 (49%) Female

Same-Day Travel n = 3,153



Most common reason:  Make / sell charcoal

Top reasons for same day movement



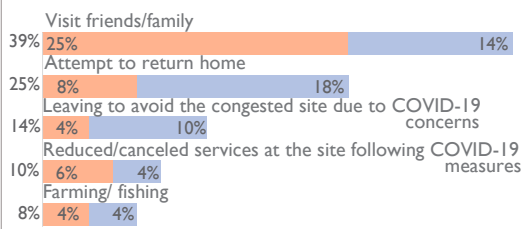
Reasons continued: Health services (6%), to buy things (6%), collect elephant grass (5%), education (4%), religious service (4%), access to cash (3%), and other (5%).

Temporary Travel n = 51



Most common reason:  Visit friends / family

Top reasons for temporary movement



Reasons continued: Health services (4%).

New Arrivals n = 20



Most common reason:  Hunger because of conflict

Top reasons for new arrival



No other reasons were recorded.

Permanent Exits n = 0

DTM enumerators did not record individuals who intended to permanently exit Masna Collective Centre during the data collection exercise for the fourth quarter of 2021.

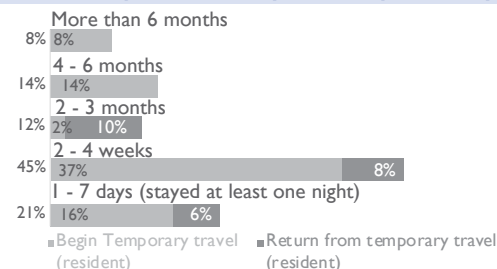
Interviews at Wau Masna Collective Centre

Travel Category	Number of Interviews
Day movement	2,055
Embarking on temporary journey	13
New entry	11
Return from temporary travel	3

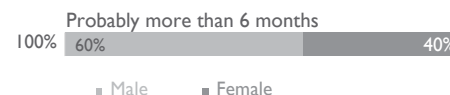
Daily gate count

Gate count is not being conducted at Wau Masna Collective Centre.

Intended period of stay / time spent away



Intended period of stay at the centre



Type & top destinations of permanent exit

Type of Destination	% of permanent exit	Main location by nature of destination
Former area but new home	-	-
New home, different area	-	-
Former area but new home	-	-
Other displacement site	-	-

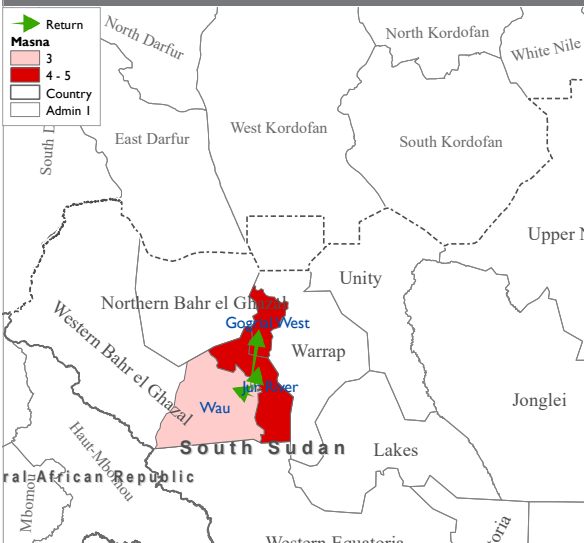
¹Disclaimer: [Rounding] Percentages may not add up to 100% as a result of rounding error.



Movement Dynamics

Return from temporary travel

n = 12

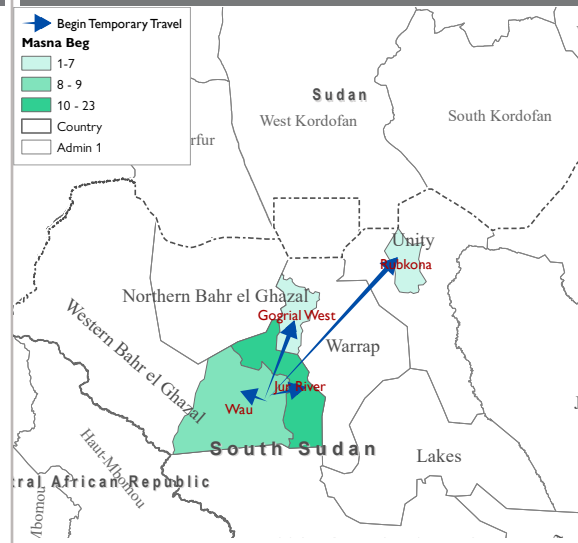


Counties of departure

Gogrial West	42%
Jur River	33%
Wau	25%

Embarking on temporary journey

n = 39



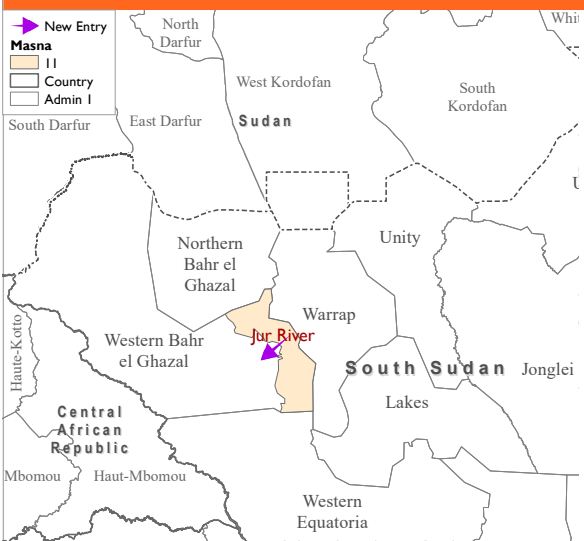
Counties of intended destination

Jur River	59%
Wau	23%
Rubkona	18%

The maps above do not include same-day travel, which tends to be limited to the immediate surroundings of the site.

New arrivals

n = 20



Counties of departure

Jur River	100%
-----------	------

Permanent exits

n = 0

DTM enumerators did not record individuals who intended to permanently exit Masna Collective Centre during the data collection exercise for the fourth quarter of 2021.