



99,031 Displaced Households

131 Assessed Sites

4 Districts

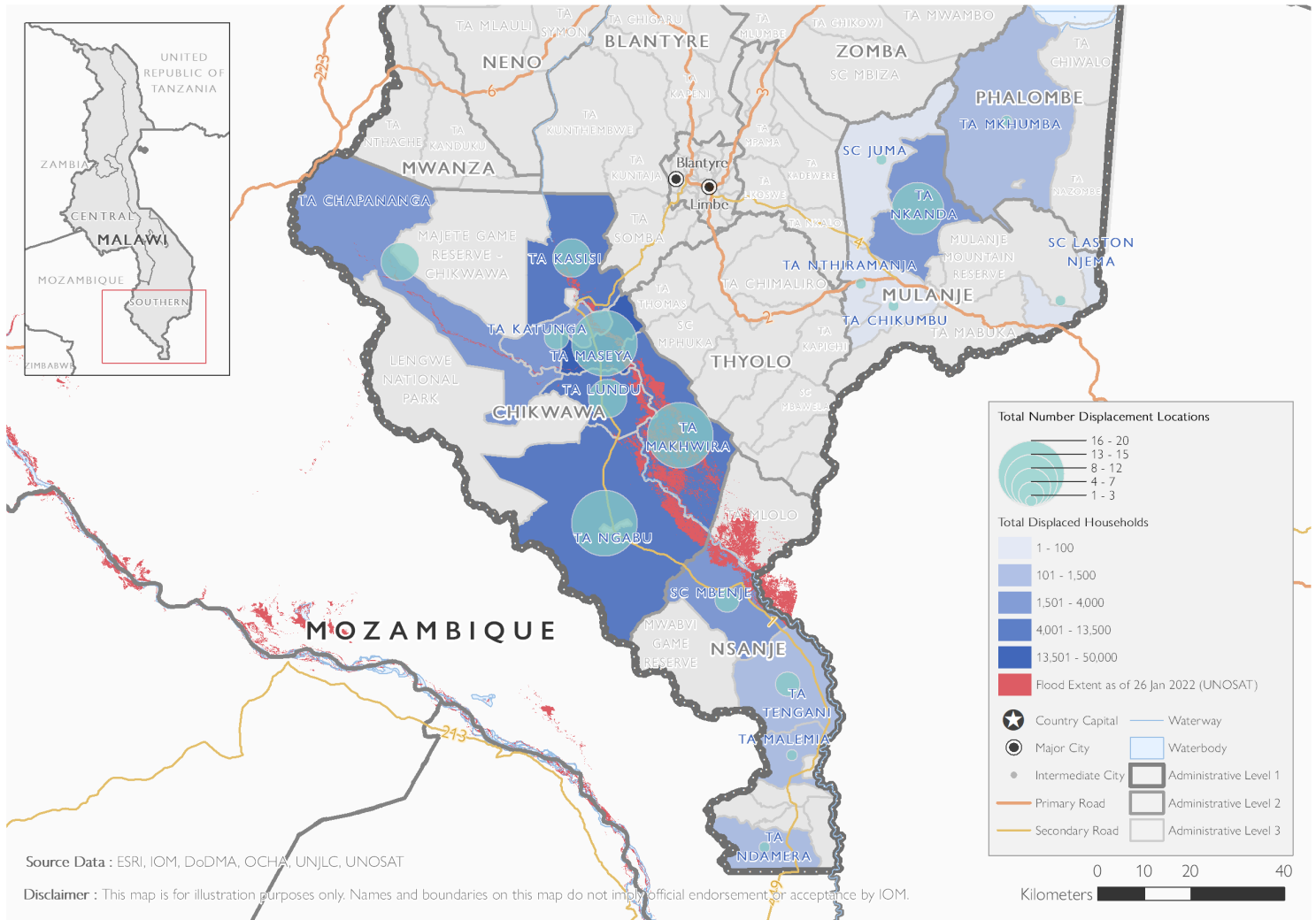
22 Traditional Areas

SITUATIONAL OVERVIEW

Following the passage of tropical storm Ana across southern Malawi, the districts of Chikwawa, Mulanje, Nsanje and Phalombe have been severely hit by torrential and persistent rains, although there are reports of other districts also been affected by the onset, such as Mulanje, Chiradzulu and Neno. Situational overviews conducted by the United Nations Satellite Centre (UNOSAT) reported a flooded area of 20Km² in the districts of Balaka, Blantyre, Neno and Zomba, where 5,400 people are potentially exposed or living close to flooded areas. Also, the Malawian government agency of Department of Disaster Management Affairs (DoDMA) reported several blocked roads in the Phalombe district, which negatively affects the daily lives of several households whom are relegated to camps and obstructing their access to essential services, such as health facilities.

Throughout an existing network of enumerators on site, IOM's Displacement Tracking Matrix (DTM) teams in Malawi are providing both logistical and technical support in developing rapid assessments in 131 sites from 22 Traditional Areas within the Districts of Chikwawa, Mulanje, Nsanje and Phalombe. **The results of this initial assessment are based on key informant interviews with local stakeholders at District level as well as site assessments in key locations from 28th to 31st January. The results of this rapid assessment are indicative of the current situation on the ground but have yet to be validated extensively in the field.**

RAPID ASSESSMENT



LOCATIONS AFFECTED IN SOUTHERN REGION BY TROPICAL STORM ANA

The table below summarizes the Total Displaced Households (99,031) from the 131 sites assessed within 22 Traditional Areas in four districts affected (Chikwawa, Mulanje, Nsanje and Phalombe) by the tropical storm Ana in the Southern region of Malawi. Please note that the total number of displaced households is as 31 January 2022. For more information, and to have access to the complete data set, please contact the IOM/DTM team (DTMMalawi@iom.int or ropretoriarmdhub@iom.int).

District	Traditional Area	Location Name	Total Displaced Households		
Chikwawa	Masache	Mambala school	Not available		
		Masache	1,186		
	Mililima	Belo Clinic Camp	140		
		Namira Clinic	71		
		Thabwa School	250		
		Tiwasamale Camp	209		
	Ndakwera	Ndakwera	752		
	Ngowe	Guta camp	1,745		
		John School Camp	272		
		Khungubwe evacuation	1,473		
		Machilika	405		
		Masanduko	535		
		Mchacha	265		
		Mwananjobvu school	452		
	Ta Chapananga	Changoima admarc	Not available		
		Chikuse	Not available		
		Chimphepo	820		
		Chitungwani Camp	232		
		Gaga Health Center	196		
		Kachibade Camp	192		
		Kalima Camp	163		
		Kuwani Camp	680		
		Lundu Camp	Not available		
		Sezu	783		
		Tombondera CBO	97		
		Ta Kasisi	Bereu primary Camp	Not available	
			Chimoto camp	196	
	Fombe (Mthumba)		259		
	Kaphiri		3,829		
	Kavalo CBCC		122		
	Ta Katunga	Misili Camp	3,950		
		Njereza Court	145		
		Kapasule Evacuation Center	748		
		Mthumba School Camp	291		
		Namalindi	151		
	Ta Lundu	Ntondeza African Church	488		
		Sadulo Camp	185		
		Bester Namicheni Camp	1,446		
		Chpakudza/Kutulo	178		
		Mada Assemblies	Not available		
		Mafale	86		
		Mangulenje evangelical	137		
		Pangilesi Camp	654		
		Sekeni	4,321		
		Tomali Dip tank	Not available		
	Tomali school	Not available			
	Ta Makhwira	Alinafe CBO	157		
		Bodza Primary	312		
		Chagambatuka	570		
		Chaphanda Camp	296		
		Chikuse	1,644		
		Great Britain church	43		
		Jeke School Camp	742		
		Kamoto Camp	92		
		Livunzu Camp	767		
		mmodzi CBO	769		
		Mpama CBO-chafulumira	298		
		Mwanayaya	613		
		Nyakamba Primary	297		
		Nyangu primary	268		
		Nzongwe School	416		
		Oleole	166		
		Savala EC	593		
		Seventh day adventist	126		
		Chikhwawa (89,388 Displaced Households)	Ta Maseya	Beleu Camp	3,710
				Besi	3,710
				Bwabwali Camp	996
	Dala Camp			2,740	
	Dziwadzina camp			5,951	
	Frank Camp			4,231	
	Joseph Camp			978	
	Kadzumba Camp			3,885	
	Kalima Camp			6,218	
	Kaphiri Camp			605	
	Mbande			431	
	Misili Camp			642	
	Mlomba Camp			2,325	
	Mpeko Camp			2,928	
	Osman Camp			557	
	Phingo Camp			850	
	Simbi Camp			3,823	
	Thabwali Camp			1,137	
	Tomali camp 2			297	
	Ta Ngabu			Chapomoka	323
			Goma	Not available	
			Jombo	896	
			Kholongo	Not available	
			Matsukambiya	461	
			Mzangaya	833	
			Nkhwangwa	857	
			Nkhwazi	3,731	
			Sc Juma	Malunda Primary	67
			Sc Laston Njema	Mitawa	86
	Mulanje (2,678 Displaced Households)		Ta Chikumbu	Kacheke	2
			Ta Nkanda	Chambe Primary	202
				Chambe Rock	102
				Chiwambo	58
				Living Waters Church	35
				Mbelezi Cbo	149
				Mpale	88
				Mpingo Wa Christu	36
				Namadid	480
				Namatuni	26
				Namindola	280
			Nogwe	361	
			Nsukwa Primary	340	
			Nthuluwe	205	
			P.I.M	117	
		Sadibwa	36		
		Ta Nthiramanja	Mthilamanja	8	
		Nsanje (6,096 Displaced Households)	Sc Mbenje	Bangula ADMARC	1,879
				Khope school	195
				Meja CBCC	442
				Mnembe	615
	Nyambesa			272	
	Ta Malemia		Chimphwembwe CBCC	339	
			Mambundungu	90	
	Ta Ndamera		Nthole CBCC	239	
			Bitilinyu	127	
	Ta Tengani		Jim 2	109	
			Nyachilenda	480	
		Kachere CBCC	184		
		Kailedzi	190		
		Mphamba CBCC	155		
		Mtolongo	94		
	Phalombe (869 Displaced Households)	Jenala	Mtondo camp	103	
			Nyamithuthu	209	
	Ta Mkhumba	Tengani EC	374		
		Mbona	382		
			Ng'anjo Evacuation Centre	457	
			Manjalende	30	

Website : <https://displacement.iom.int/malawi>
Feedback: DTMMalawi@iom.int or ropretoriarmdhub@iom.int

When quoting, paraphrasing, or in any other way using the information mentioned in this report, the source needs to be stated appropriately as follows: The International Organization for Migration January, 2022, Displacement Tracking Matrix.