



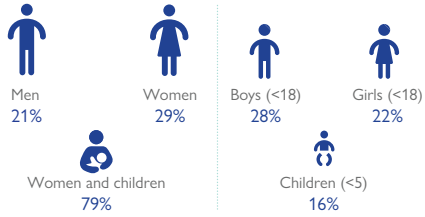
DTM

DISPLACEMENT TRACKING MATRIX NIGERIA NORTH-CENTRAL AND NORTH-WEST ZONES

SITE ASSESSMENT DASHBOARD

DECEMBER 2021 ROUND 8

Demographic composition:



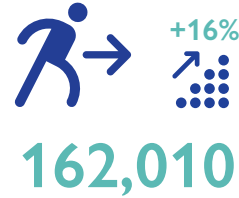
In camps/camp-like settings:

- 50% of IDPs have been previously displaced.
- 17% of IDPs cited tapuline as the most needed shelter material.
- 36% of IDPs complained of not having potable water.
- 28% of IDPs cited blanket/mat as the most needed NFI.
- 34% of education facilities are located off-sites.
- 62% of IDPs cited malaria as the most common health problem.
- 44% do not have access to regular medication.
- 41% of IDPs do not have access to food support.
in 86% of the sites surveyed, IDPs cited food as the main unmet need.

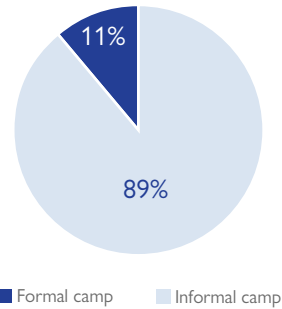
Sites assessed



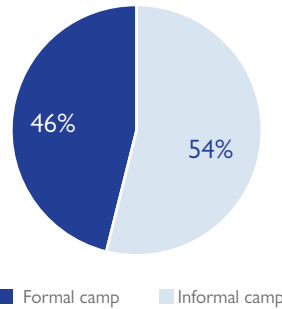
IDP in camps/camp-like settings



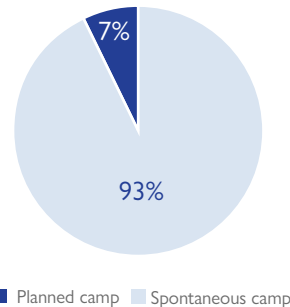
Sites number by status



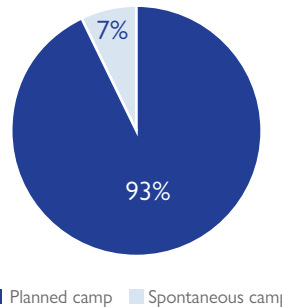
Population by site status



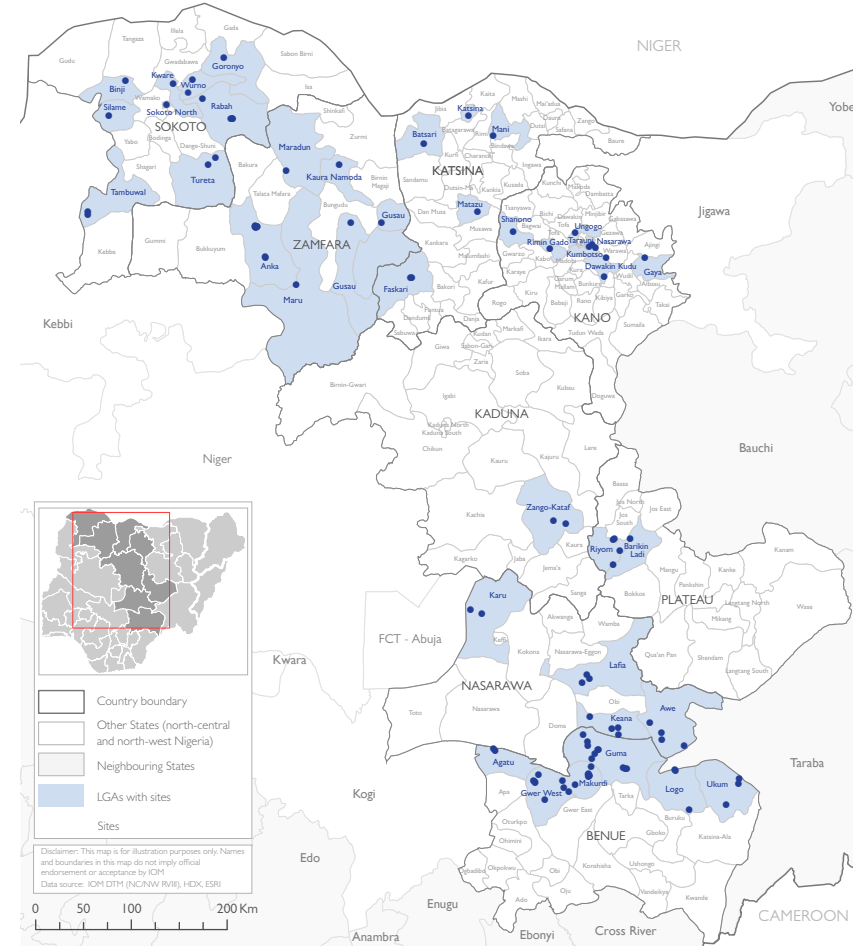
Sites by classification



Population by classification



IDP presence at LGA level



Click LGA name to view sites' locations & details on Google map

DISCLAIMER: The depiction and use of boundaries, geographic names, and related data shown on maps are not warranted to be error free nor do they imply judgment on the legal status of any territory, or any endorsement or acceptance of such boundaries by IOM.

For more information or to report an alert, please contact: DTM Nigeria: iomnigeriadtm@iom.int | <https://displacement.iom.int/nigeria> ; <https://dtm.iom.int/nigeria>

