



# DTM

## DISPLACEMENT TRACKING MATRIX NIGERIA NORTH-CENTRAL AND NORTH-WEST ZONES

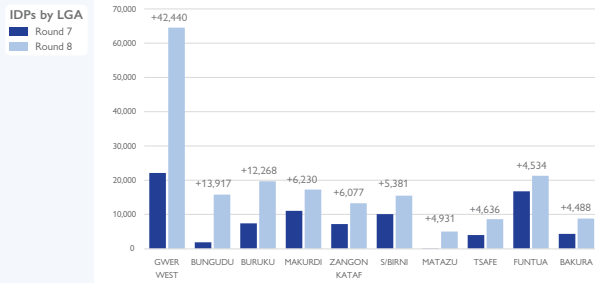
## POPULATION VARIATION DASHBOARD

## DECEMBER 2021 ROUND 8

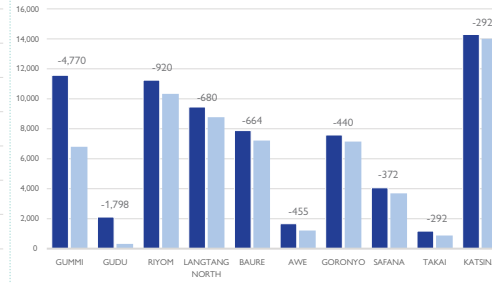
### IDP population variation between round 7 and 8 | Top LGAs with variation

ROUNDS	Population increase		Population decrease	
	GWERT WEST	BUNGUDU	GUMMI	GUDU
8	64,536 <b>+42,440</b>	1,866 <b>+13,917</b>	6,801 <b>-4,770</b>	317 <b>-1,798</b>
7	22,096	15,783	11,571	2,119
Reasons	<b>Gwer west:</b> The steep increase can be explained by the fact that during Round 8, new sites were assessed in Gwer West LGA and incessant attacks by herders.	<b>Bungudu:</b> The IDP population increase due to increase in Kidnapping incidents within the LGA.	<b>Gummi:</b> The decrease in population was as a result of IDPs returning to their place of origin due to the rehabilitation of the damages caused by flooding/erosion, also due to improved security.	<b>Gudu:</b> The IDP population decreased due to the IDPs returning back to their place of origin following the improvement of security in the area.

#### Top LGAs with IDP population increase



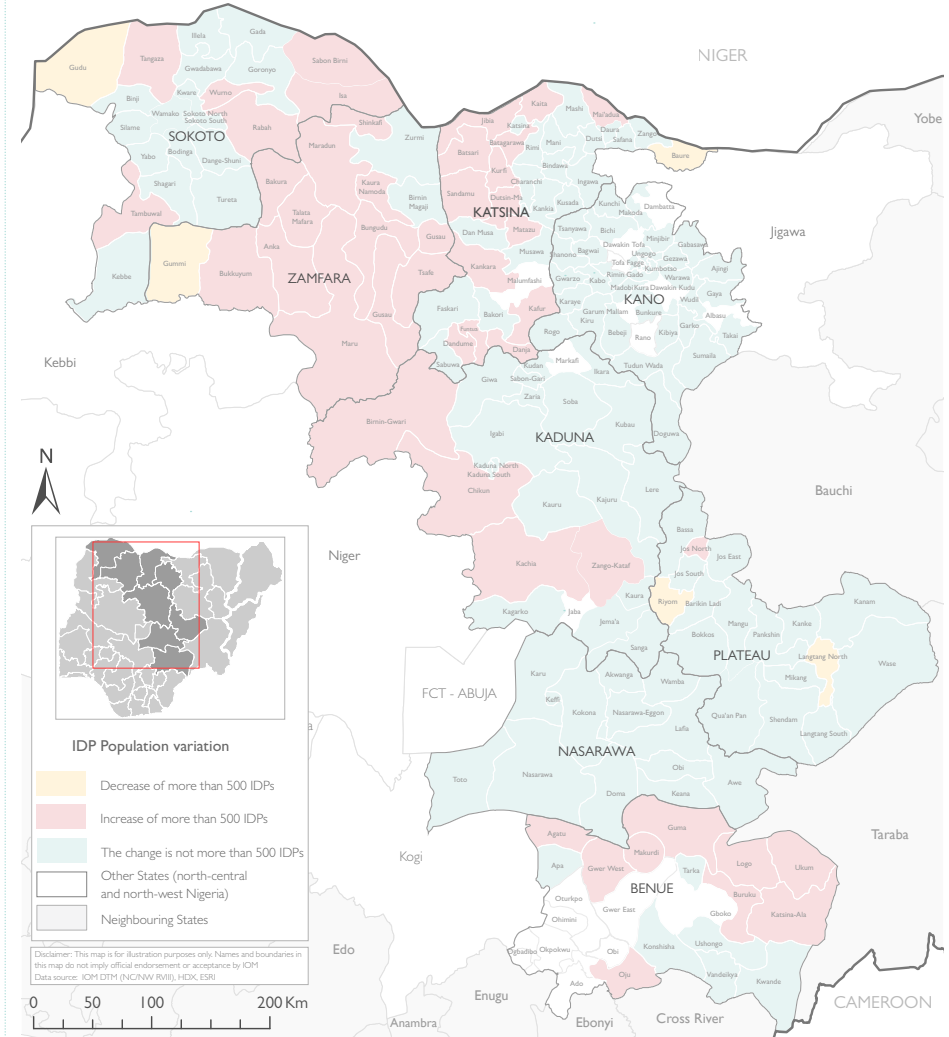
#### Top LGAs with IDP population decrease



Reasons for population increase	%
Attacks/Fear of attacks (by Bandits/Herders)	52%
Increased in Kidnapping incidents	18%
Newly assessed sites	16%
Communal clashes	11%
Insecurity	2%

Reasons for population decrease	%
Returned to place of origin	80%
Improved security	20%

#### IDP presence at LGA level



DISCLAIMER: The depiction and use of boundaries, geographic names, and related data shown on maps are not warranted to be error free nor do they imply judgment on the legal status of any territory, or any endorsement or acceptance of such boundaries by IOM.

For more information or to report an alert, please contact: DTM Nigeria: [iomnigeria@iom.int](mailto:iomnigeria@iom.int) | <https://displacement.iom.int/nigeria> ; <https://dtm.iom.int/nigeria>

