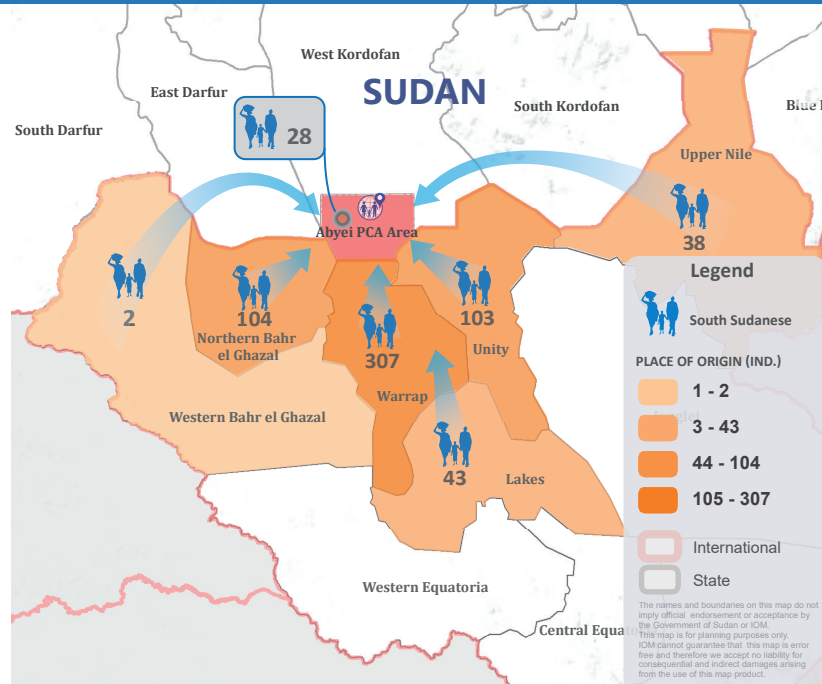


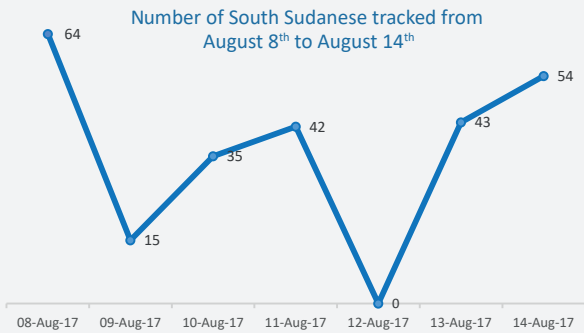
The IOM-DTM team in Sudan established a new Flow Monitoring Point (FMP) in Diffra, in the northern part of Abyei. Since July 24<sup>th</sup> 2017, a total of **1,152** South Sudanese coming from different locations were tracked through Diffra FMP; out of which only **685** records were processed to the database for the period of July 24<sup>th</sup> to August 2<sup>nd</sup>.

**84** out of the **197** households tracked / registered were composed of only one individual, **7%** of which are females while in general, **25%** of the registered households were headed by females. The average household age is 30 years old.



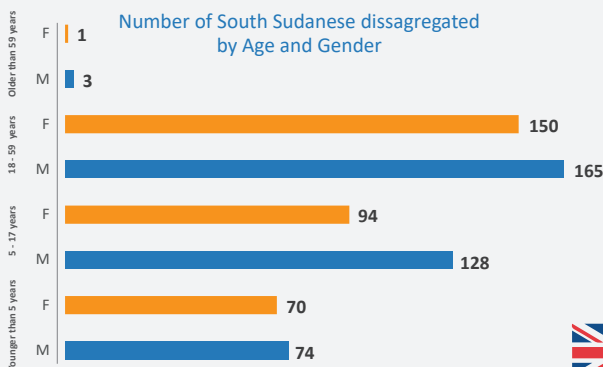
## Tracking

A total of **253** individuals were tracked through Abyei's FMP from August 8<sup>th</sup> to August 14<sup>th</sup> with an average of **36** individuals per day. Due to the heavy rain, no people were tracked on August 12<sup>th</sup>.



## Demographic Data

**46%** of the tracked / registered South Sudanese were aged between 18 to 59 years old, followed by **32%** who were aged between 5 to 17 years old, while **21%** were younger than 5 years old and only 4 persons were older than 59 years old. **54%** of the tracked / registered individuals were males.



## Place of Origin

Most of the registered South Sudanese come from different counties in Warrap State (**45%**), followed by **15%** from Northern Bahr El Ghazal State, **15%** from Unity State, **6%** from Lakes State, **6%** from Upper Nile State, **4%** Abyei PCA Area and the remaining **9%** are from other locations.

## Vulnerability

Out of the **685** registered caseloads **4** cases were identified as most vulnerable: **3** reported to be chronically ill (they are from the same family) and **1** reported to have physical disability. **10** households were identified to be headed by minors, all of them are male and came without their families, while **4** households were identified as headed by elderly individuals (older than 65 years old), three of which are male and one is female.

## Intentions

The registered South Sudanese stated that they are planning to stay in Abyei for the rainy season. Some of them stated that they are planning to continue the journey to different areas in Sudan, while others are planning either to stay in Abyei or return to their place of origin in South Sudan. The South Sudanese are working mainly in farms in different areas in Diffra. To have a better understanding of the migration intention IOM is planning to conduct an intentions survey.

## Occupation

**59%** of the tracked / registered people stated that they are working in either education (**18%**), agriculture (**17%**) or carpentry (**8%**); while (**11%**) are nomads / shepherds, **5%** students and the rest stated that they were either daily workers, cooks or bakers.