



# EMERGENCY TRACKING TOOL (ETT)

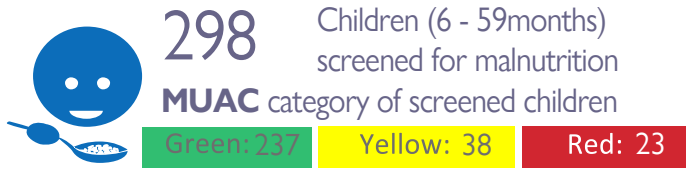
The DTM Emergency Tracking Tool (ETT) is deployed to track and to collect information on large and sudden population movements, provide frequent updates on the scale of displacement and quantify the affected population when needed. As a subcomponent of the Mobility Tracking methodology in Nigeria, ETT utilises direct observation and a broad network of key informants to capture best estimates of the affected population per location, enabling targeted humanitarian response planning.

## ETT Report: No. 245 | 11 - 17 October 2021

### MOVEMENT



### NEW ARRIVAL SCREENING BY NUTRITION PARTNERS

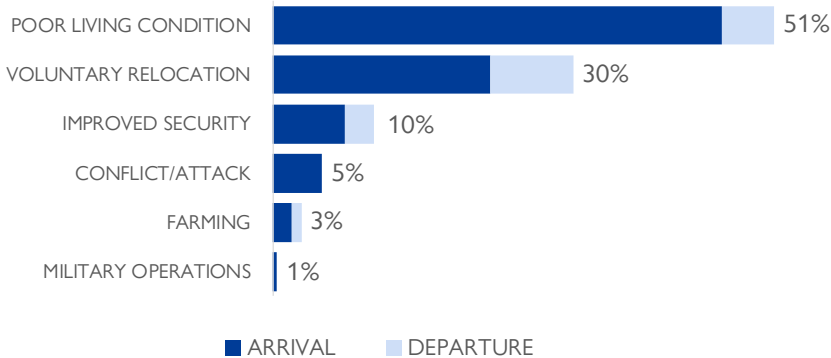


Between 11 and 17 October 2021, a total of 3,530 movements were recorded in the states of Adamawa and Borno. The recorded movements consisted of 2,910 arrivals and 620 departures. Arrivals were recorded at locations in Askira/Uba, Bama, Biu, Damboa, Gwoza, Hawul and Ngala Local Government Areas (LGAs) of the most conflict-affected state of Borno and in Fufore, Girei, Gombi, Hong, Lamurde, Maiha, Michika, Mubi North, Mubi South, Numan, Yola North, and Yola South LGAs of Adamawa.

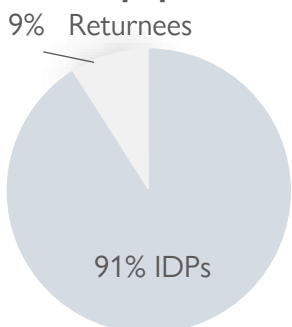
Departures were recorded in Askira/Uba LGA of Borno, and Demsa, Fufore, Girei, Hong, Madagali, Maiha, Mubi North, Mubi South, Song, and Yola South LGAs of Adamawa.

ETT assessments identified the following movement triggers: poor living conditions (1,796 individuals or 51%), voluntary relocation (1,076 individuals or 30%), improved security (364 individuals or 10%), conflict/attack (177 individuals or 5%), seasonal farming (103 individuals or 3%) and military operations (14 individuals or 1%).

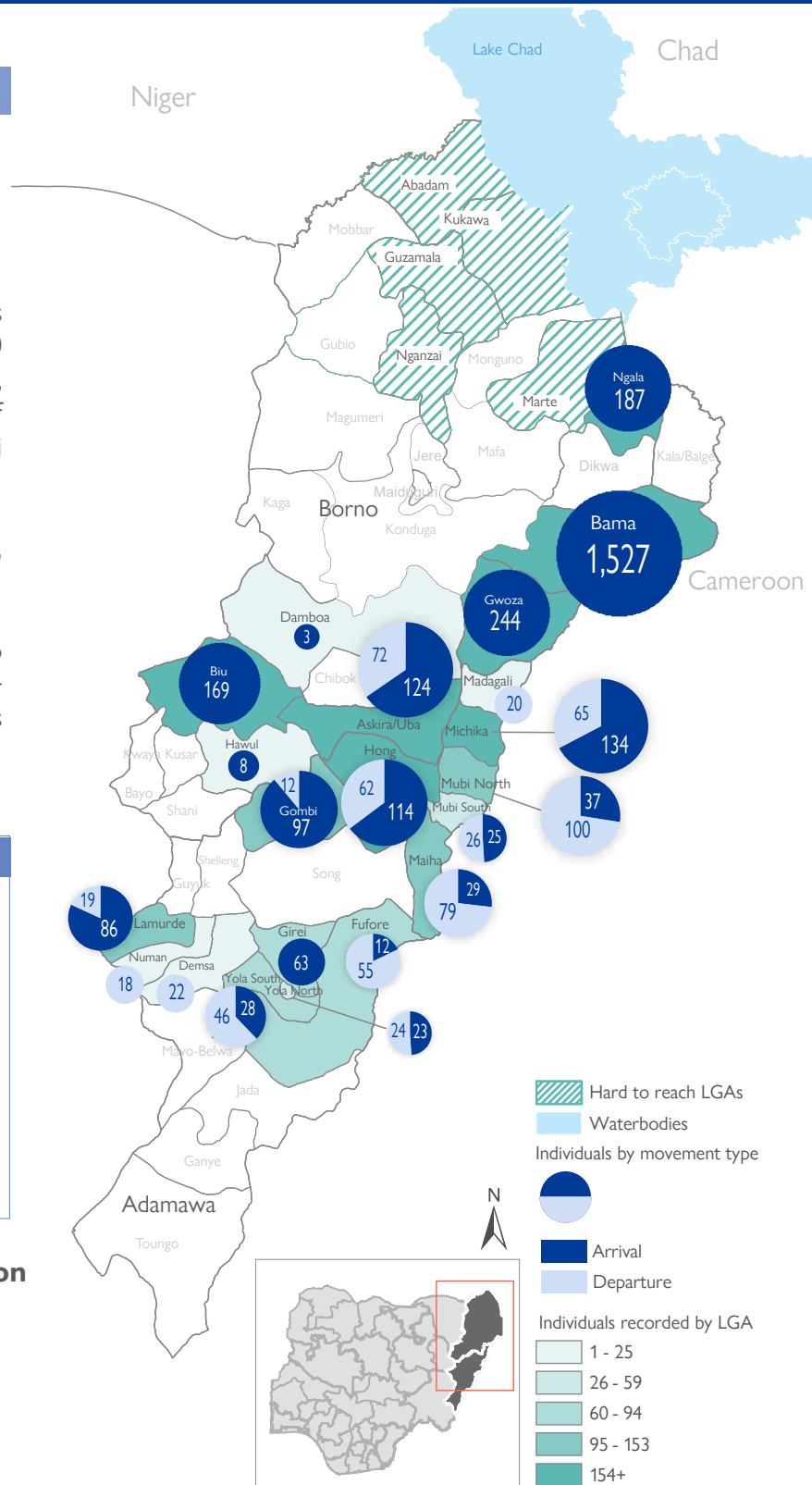
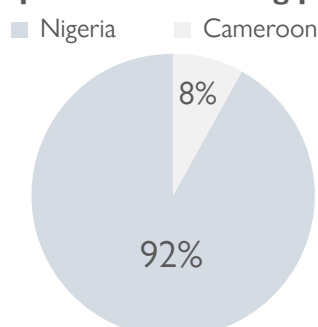
### PERCENTAGE OF INDIVIDUALS BY MOVEMENT TRIGGER



### Affected population



### Country of departure of arriving population



\* Movements in Kala/Balge were captured by ETT outreach staff in the LGA

### SUMMARY OF MAJOR MOVEMENTS

**Bama:** 1,527 arrivals were recorded in Bama LGA of Borno State. The arrivals included 1,060 individuals from within Bama LGA, 287 individuals from Marwa region in Cameroon and 180 individuals from Konduga LGA in Borno State. Seventy-eight per cent of the movements recorded were due to voluntary relocation and 22 per cent of the movements were due to poor living conditions.

**Gwoza:** 244 arrivals were recorded in Gwoza LGA of Borno State. The arrivals included 141 individuals from within Gwoza LGA, 83 individuals from Bama LGA in Borno State, 12 individuals from Mubi North LGA in Adamawa State and 8 individuals from Jere LGA in Borno State. Eighty-two per cent of the movements recorded were due to poor living conditions, 8 per cent of the movements were a result of the improved security situation in areas of origin, 6 per cent of the movements were triggered by military operations and 4 per cent of the movements recorded were due to voluntary relocations.

**Michika:** 134 arrivals and 65 departures were recorded in Michika LGA of Adamawa State. The arrivals included 57 individuals from within Michika LGA, 38 individuals from Mubi North LGA in Adamawa State, 21 individuals from Song LGA in Adamawa State, 12 individuals from Gombi LGA in Adamawa State and 6 individuals from Fufore LGA in Adamawa State. The departures included 51 individuals to Gwoza LGA in Borno State and 14 individuals to Mubi North LGA in Adamawa State. Ninety-three per cent of the movements were a result of the improved security situation in areas of origin and 7 per cent of the movements were due to poor living conditions.

**Askira/Uba:** 124 arrivals and 72 departures were recorded in Askira/Uba LGA of Borno State. The arrivals included 66 individuals from within Askira/Uba LGA, 49 individuals from Hong LGA in Adamawa State and 9 individuals from Biu LGA in Borno State. The departures included 53 individuals to locations within Askira/Uba and 19 individuals to Damboa LGA in Borno State. Fifty per cent of the movements were due to poor living conditions, 43 per cent of the movements recorded were a result of the improved security situation in areas of origin and 7 per cent of the movements were due to voluntary relocations.

## NEW ARRIVAL MALNUTRITION SCREENING SUMMARY (CHILDREN 6-59 MONTHS)

An exhaustive nutrition screening using mid-upper arm circumference (MUAC) and oedema for acute malnutrition was conducted by sector partners for 298 children of 6-59 months. Of the 298 children screened, the MUAC reading indicated that 23 children were recorded in the red category, 38 children in the yellow category and 237 children in the green category. No case of oedema was reported in the 3 LGAs assessed.

The results also included 33 children who arrived from neighbouring countries (all in Bama LGA). Of all the 33 children measured, none was recorded in the red category, 1 in the yellow category, and 32 were in the green category. All children found with acute malnutrition have been admitted for treatment. Please note, the data presented are not surveillance results and should be interpreted with caution.

LGA	MUAC Categories						Total
	Green (>12.5cm)		Yellow (11.5cm - 12.5cm)		Red (<11.5cm)		
	Inaccessible	Accessible	Inaccessible	Accessible	Inaccessible	Accessible	
Bama	108	76	24	5	8	2	223
Gwoza	0	32	0	3	0	6	41
Ngala	21	0	6	0	7	0	34
<b>Total</b>	<b>129</b>	<b>108</b>	<b>30</b>	<b>8</b>	<b>15</b>	<b>8</b>	<b>298</b>

■ Nourished     
 ■ Moderate Acute Malnutrition (MAM)     
 ■ Severe Acute Malnutrition (MAM)

Please note, the data presented are not surveillance results and should be interpreted with caution.

**Table 1. Details of movements by locations of assessment and locations of arrival / departure** - only movements with at least 24 persons are listed below

Tracking location			Movement location			ARRIVAL	DEPARTURE	GRAND TOTAL			
STATE	LGA	WARD	STATE	LGA	WARD						
ADAMAWA	FUFORE	PARIYA	ADAMAWA	SONG	SONG WAJE	-	26	26			
	GIREI	WURO DOLE	ADAMAWA	YOLA NORTH	LUGGERE	24	-	24			
	GOMBI	GOMBI SOUTH		ADAMAWA	MICHIKA	THUKUDOU/SUFUKU/ZAHA	28	-	28		
					DEMISA	DEMISA	38	-	38		
	HONG	TAWA		YOBE	YUNUSARI	DARATOSHIA	31	-	31		
					ADAMAWA	HONG	BANGSHIKA	MAYO LOPE	29	-	29
							DAKSIRI	GAYA	33	-	33
							HILDI	UBA	-	28	28
							HONG	BANGSHIKA	-	34	34
					UBA	GAYA	29	-	29		
	LAMURDE	LAFIYA	WADUKU	ADAMAWA	SHELLENG	KIRI	30	-	30		
					GUYUK	DUMNA	39	-	39		
	MICHIKA	BAZZA MARGI	GARTA/GHUNCHI	BORNO	GWOZA	PULKA BOKKO	-	51	51		
				ADAMAWA	MICHIKA	MICHIKA II	36	-	36		
					MUBI NORTH	MIJILU	38	-	38		
	MUBI NORTH	DIGIL	VIMTIM	BORNO	ASKIRA UBA	HUSARA/TAMPUL	-	24	24		
ADAMAWA				HONG	THILBANG	-	27	27			
MUBI SOUTH	NASSARAWO		ADAMAWA	SONG	DUMNE	-	31	31			
				BORNO	GWOZA	BITA/IZGHE	-	26	26		
YOLA NORTH	LUGGERE		ADAMAWA	GIREI	WURO DOLE	-	24	24			
BORNO	ASKIRA/UBA	CHUL/RUMIRGO	ADAMAWA	HONG	UBA	49	-	49			
		BORNO	ASKIRA UBA	ASKIRA EAST	66	-	66				
				NGULDE	-	39	39				
	BAMA	BUDUWA/BULA CHIRABE	BORNO	BAMA	SHEHURI/HAUSARI/MAIRI	55	-	55			
			CAMEROON	MARWA	MORA	202	-	202			
					GAWAR	85	-	85			
			BORNO	BAMA	MBULIYA/GONIRI/SIRAJA	261	-	261			
					GULUMBA/JUKKURI/BATRA	72	-	72			
					DIPCHARI/JERE/DARAJAMAL/KOTEMBE	421	-	421			
	LAWANTI/MALAM/MASTARI/ABBARAM	251			-	251					
	KONDUGA	KONDUGA	180	-	180						
	BIU	DUGJA	BORNO	BIU	ZARAWUYAKU	169	-	169			
	GWOZA	PULKA BOKKO	BORNO	BAMA	SHEHURI/HAUSARI/MAIRI	56	-	56			
				GWOZA	DURE WALA WARABE	87	-	87			
						25	-	25			
	NGALA	NGALA WARD	BORNO	NGALA WARD	WARSEHE	187	-	187			

The depiction and use of boundaries, geographic names, and related data shown on maps and included in this report are not warranted to be error free nor do they imply judgment on the legal status of any territory, or any endorsement or acceptance of such boundaries by IOM.

When quoting, paraphrasing or in anyway using the information mentioned in this report, the source needs to be stated appropriately as follows: "Source: International Organization for Migration [month, year], Displacement Tracking Matrix (DTM)".

\* MUAC data is provided by UNICEF

For more information or to report an alert, please contact: DTM Nigeria: [iomnigeria@iom.int](mailto:iomnigeria@iom.int)

<https://displacement.iom.int/nigeria> ; <https://dtm.iom.int/nigeria>

