



IOM's Displacement Tracking Matrix (DTM) continued conducting Displacement Site Flow Monitoring (DSFM) at the gates of Bentiu IDP Camp. The third quarter (July – September) recorded 6,792 interviews accounting for 27,034 individuals moving into / out of the camp. Day movements increased this quarter by 8 per cent (from 9,332 to 10,106 individuals) and were dominated by women and girls (74%). Among all respondents, the main reason for day movements were to collect firewood (20%). Temporary movements were driven by individuals moving out of the camp to collect firewood (19%), visiting friends / family (18%) and attempting to return home (17%). The number of travelers has increased from 12,205 to 16,505 individuals (35% increase compared to the second quarter). Bentiu IDP Camp recorded a 27 per cent decrease in new arrivals most of whom arrived from Rubkona, Panyijar, Khartoum (Sudan) and Jabal Aulia (Sudan). Eighty-nine per cent of the new arrivals intend to spend more than six months in the camp. Permanent exits decreased drastically from 737 in the second quarter to 272 individuals during this quarter. Common reasons for these exits were to be with family (35%), to look for livelihood / work opportunities (16%), and due to improved living conditions at locations of destination (14%). Seventy-three per cent of the individuals who permanently exited the camp were destined to former homes in Rubkona and Guit counties.

Methodology:

Displacement Site Flow Monitoring (DSFM) involves interviewing a cross-section of persons passing through the site's entry and exit points. DTM aims to provide partners with a better understanding of mobility dynamics into and out of the sites categorized as same-day movement, temporary (overnight) travel, new entries and (intended) permanent exits. Interviews are conducted seven days a week from 8 a.m. to 5 p.m. DSFM provides indicative traveller profiles rather than comprehensive or representative estimates.

August Population Count

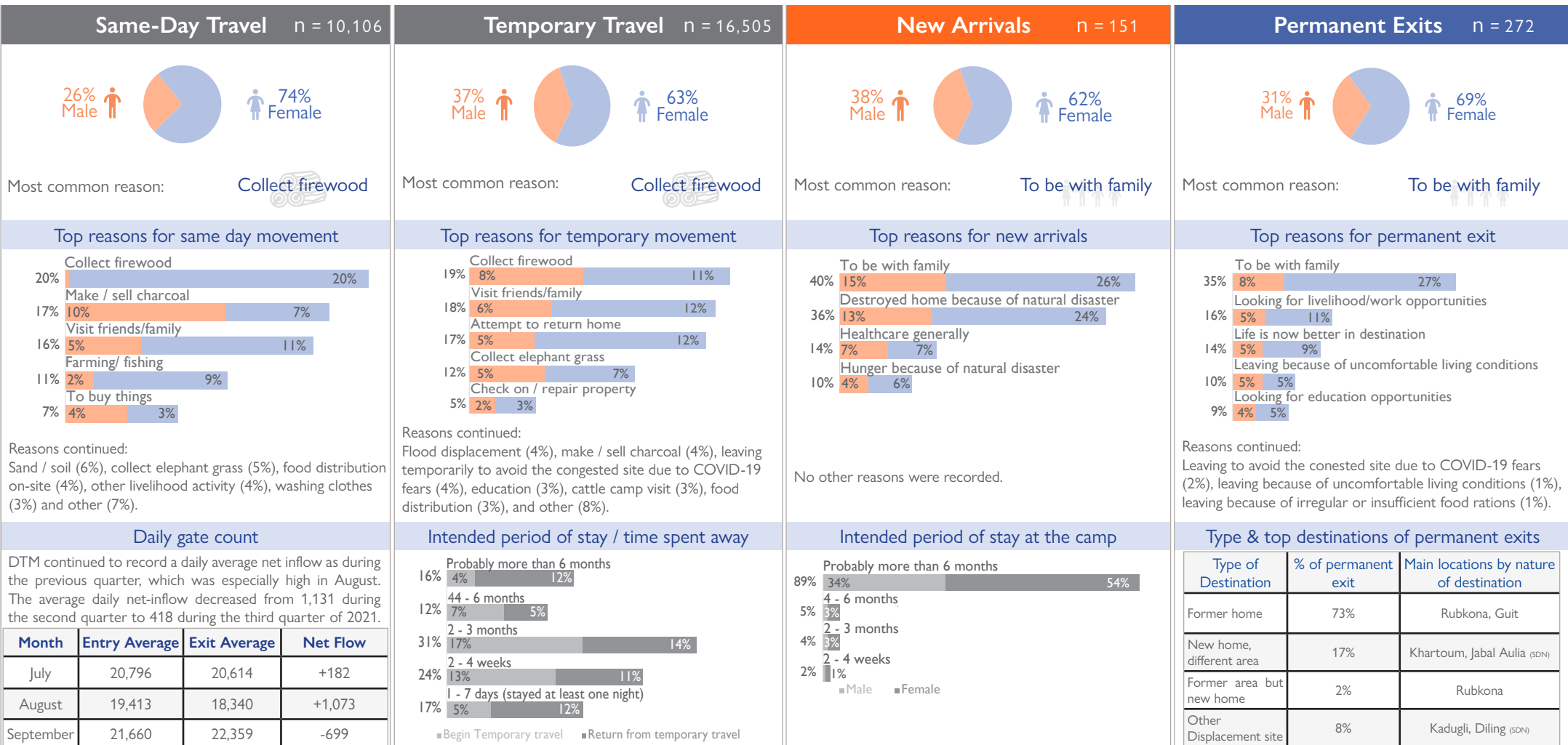
108,456 ind. (16,019 households)



53,448 (49%) Male



55,008 (51%) Female

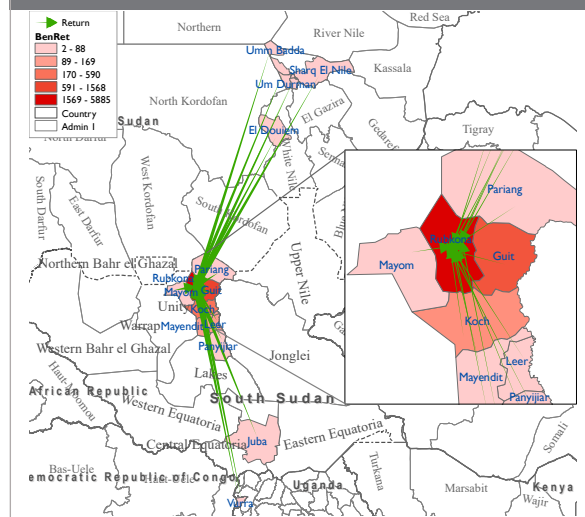


Note: [Rounding] Percentages may not add up to 100% as a result of rounding error.



Movement Dynamics

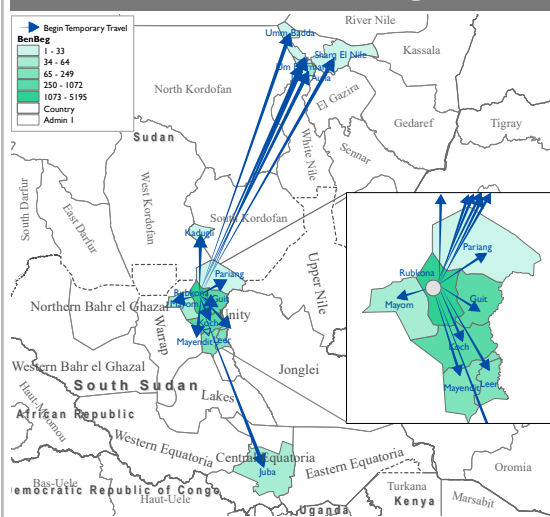
Return from temporary travel n = 8,871



Counties of departure

Rubkona	66%
Guit	18%
Koch	7%
Leer	2%
Mayendit	1%
Other	6%

Embarking on temporary journey n = 7,634

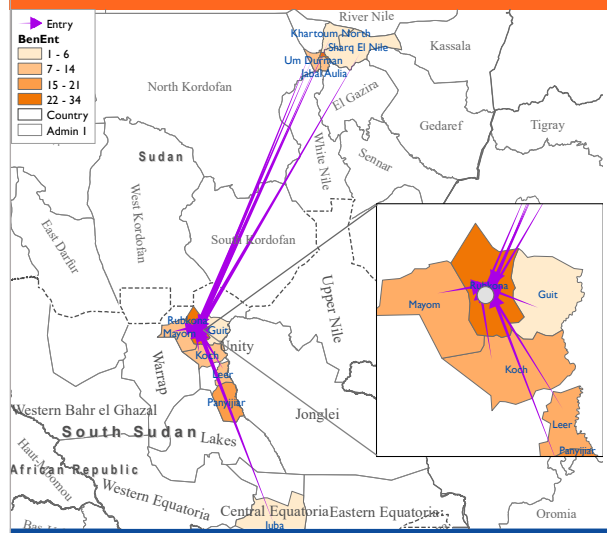


Counties of intended destinations

Rubkona	68%
Guit	14%
Koch	8%
Mayendit	3%
Leer	3%
Other	4%

The maps above do not include same-day travel, which tends to be limited to the immediate surroundings of the site.

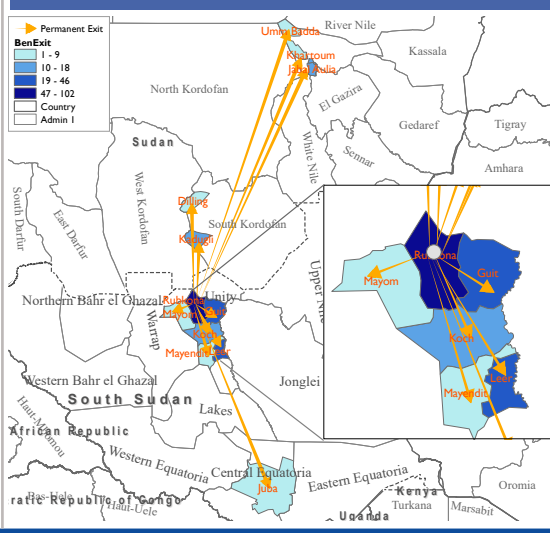
New arrivals n = 151



Counties of departure

Rubkona	23%
Khartoum (SDN)	19%
Panyijar	14%
Mayom	9%
Jabal Aulia (SDN)	8%
Leer	7%
Koch	6%
Um Durman (SDN)	5%
Other	9%

Permanent exits n = 272



Counties of intended destinations

Rubkona	38%
Guit	17%
Leer	11%
Koch	7%
Khartoum (SDN)	6%
Kaduguli (SDN)	6%
Jabal Aulia (SDN)	4%
Other	11%