

EMERGENCY EVENT TRACKING

Data collection: 6 December 2021

CONFLICT



The DTM Emergency Event Tracking (EET) is deployed to track sudden displacement and population movements, provide more frequent updates on the scale of displacement, and quantify the affected population when needed. As a subcomponent of the new Mobility Tracking methodology in Sudan ([Round Two](#)), and activated on a need basis, EET utilises a broad network of key informants to capture best estimates of the affected population presence per location – a useful tool for humanitarian response planning and design.

Event Overview



1,353

IDP individuals

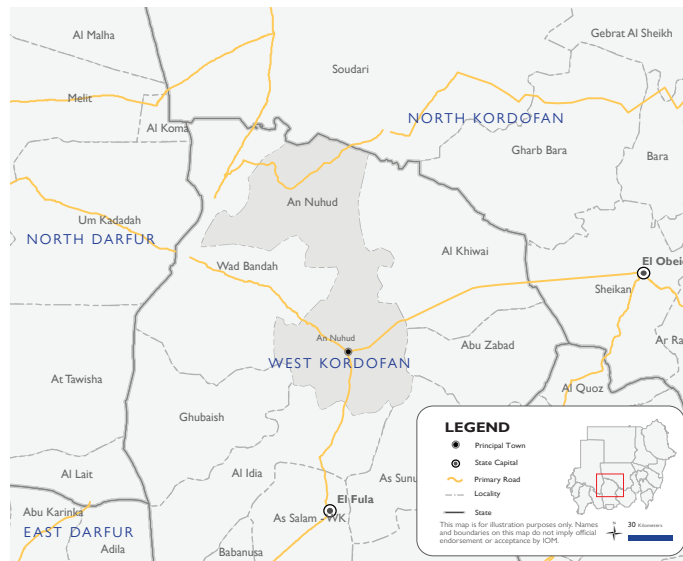


256

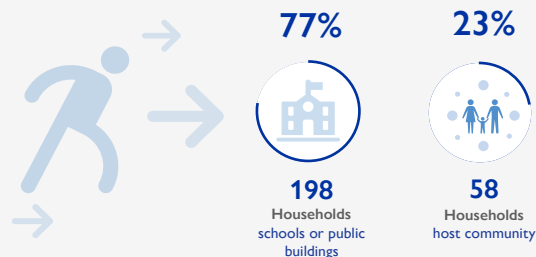
IDP households

DTM teams activated EET to monitor the displacement of individuals affected by inter-communal conflict in An Nuhud locality, West Kordofan on 6 December 2021. On 5 December 2021, clashes including Al Mnsara and Arab Hamra tribes erupted over a property theft in Bayad village in An Nuhud locality, West Kordofan.

The first EET estimates a total number of 1,353 individuals (256 households) currently seeking shelter in An Nuhud town (85%) and Hilat Jebiril (15%). The IDP caseload was originally displaced from Hilat Ajak (56%), Hilat Hamad (29%) and Nablal (15%), which were completely burnt down. DTM field teams have confirmed that at least 18 individuals were killed with a further 11 individuals sustaining injuries. Field teams indicate that 690 individuals report lost goods, cattle, and/or livestock. All displaced individuals are Sudanese nationals. DTM teams identified at least 245 cases of additional vulnerabilities in need of assistance and support. Based on a ranking scale, the three priority needs across the caseload are Emergency Shelter, Food and Non-Food Items.



Shelter Indicator



Priority Needs

(Ranking scale)



Emergency Shelter

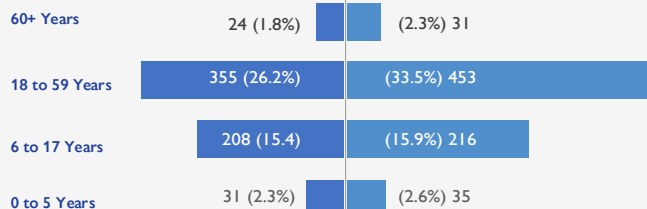


Food

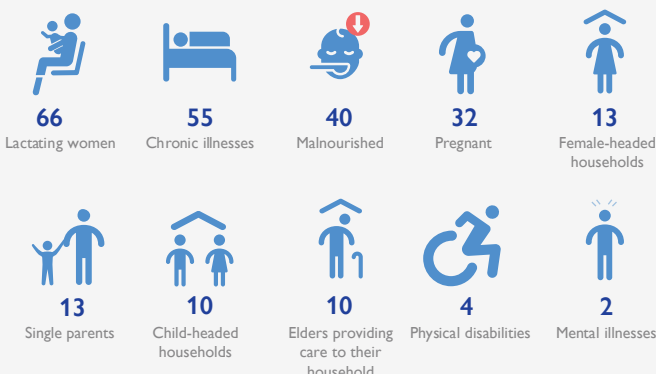


Non-Food Items

Demographics



Vulnerabilities



Return Intention

Data collected through the return intention indicator suggests that all IDPs (100%) intend to remain in the same place.

IOM DISCLAIMER

The opinions expressed in the report are those of the authors and do not necessarily reflect the views of the International Organization for Migration (IOM). The designations employed and the presentation of material throughout the report do not imply the expression of any opinion whatsoever on the part of IOM concerning the legal status of any country, territory, city or area, or of its authorities, or concerning its frontiers or boundaries.

IOM is committed to the principle that humane and orderly migration benefits migrants and society. As an intergovernmental organization, IOM acts with its partners in the international community to: assist in the meeting of operational challenges of migration; advance understanding of migration issues; encourage social and economic development through migration; and uphold the human dignity and well-being of migrants.