



# EMERGENCY TRACKING TOOL (ETT)

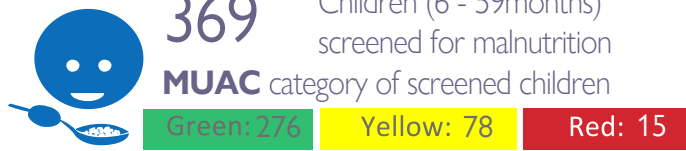
The DTM Emergency Tracking Tool (ETT) is deployed to track and to collect information on large and sudden population movements, provide frequent updates on the scale of displacement and quantify the affected population when needed. As a subcomponent of the Mobility Tracking methodology in Nigeria, ETT utilises direct observation and a broad network of key informants to capture best estimates of the affected population per location, enabling targeted humanitarian response planning.

## ETT Report: No. 251 | 22 - 28 November 2021

### MOVEMENT



### NEW ARRIVAL SCREENING BY NUTRITION PARTNERS

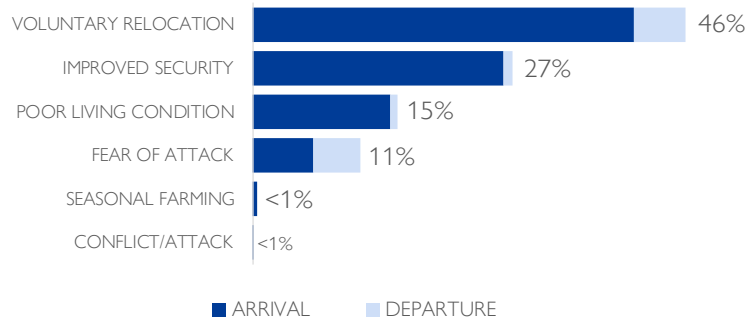


Between 22 and 28 November 2021, a total of 5,272 movements were recorded in the states of Adamawa and Borno. The recorded movements consisted of 4,635 arrivals and 637 departures. Arrivals were recorded at locations in Askira/Uba, Bama, Damboa, Gwoza Kala/Balge, Monguno and Ngala Local Government Areas (LGAs) of the most conflict-affected state of Borno and in Fufore, Girei, Gombi, Hong, Lamurde, Maiha, Michika and Mubi South LGAs of Adamawa.

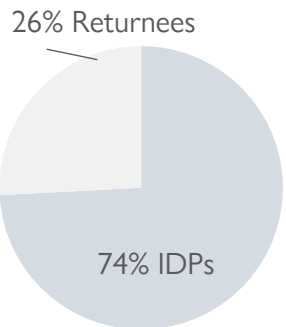
Departures were recorded in Askira/Uba, Bama and Kala/Balge LGAs of Borno, and Hong, Maiha, Michika, Mubi South, Numan, Song, Yola North and Yola South LGAs of Adamawa.

ETT assessments identified the following movement triggers: voluntary relocation (2,403 individuals or 46%), improved security (1,442 individuals or 27%), poor living conditions (802 individuals or 15%), fear of attacks (596 individuals or 11%), seasonal farming (27 individuals or less than 1%) and conflicts/attacks (2 individuals or less than 1%).

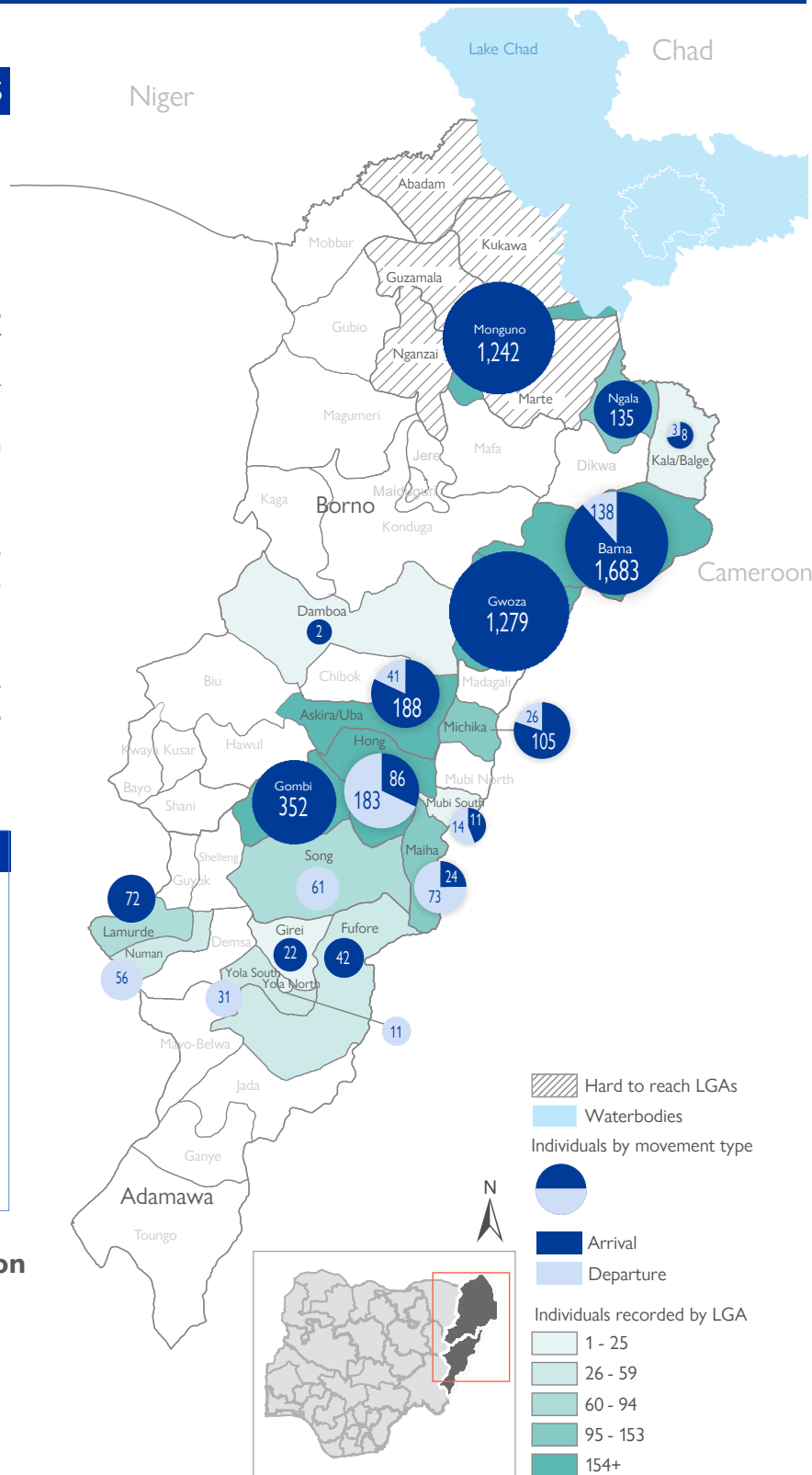
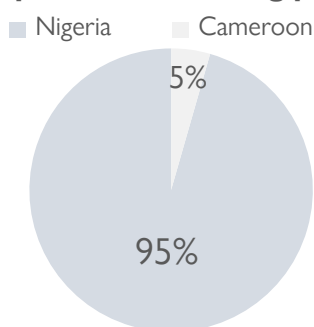
### PERCENTAGE OF INDIVIDUALS BY MOVEMENT TRIGGER



### Affected population



### Country of departure of arriving population



\* Movements in Kala/Balge were captured by ETT outreach staff in the LGA

## SUMMARY OF MAJOR MOVEMENTS

**Gwoza:** 1,279 arrivals were recorded in Gwoza LGA of Borno State. The arrivals included 966 individuals from Jere LGA, 253 individuals from within Gwoza LGA, 47 individuals from Marwa region in Cameroon and 13 individuals from Bama LGA in Borno State. Seventy-six per cent of the movements recorded were due to voluntary relocation and 24 per cent of the movements were due to poor living conditions.

**Monguno:** 1,242 arrivals were recorded in Monguno LGA of Borno State. The arrivals included 1,050 individuals from Jere LGA and 192 individuals from Maiduguri Metropolitan Council LGA in Borno State. Ninety-six per cent of the movements recorded were a result of the improved security situation in areas of origin and 4 per cent of the movements were due to voluntary relocation.

**Bama:** 1,067 arrivals and 138 departures were recorded in Bama LGA of Borno State. The arrivals included 981 individuals from within Bama LGA and 86 individuals from Marwa region in Cameroon. All departures were to other locations within Bama LGA. Eighty per cent of the movements recorded were due to voluntary relocation and 20 per cent of the movements were due to poor living conditions.

**Gombi:** 352 arrivals were recorded in Gombi LGA of Adamawa State. The arrivals included 243 individuals from Hong LGA in Adamawa State, 93 individuals from Song LGA and 16 individuals from within Gombi LGA. Ninety-five per cent of the movements were provoked by fear of attacks and 5 per cent of the movements were due to voluntary relocation.

## NEW ARRIVAL MALNUTRITION SCREENING SUMMARY (CHILDREN 6 - 59 MONTHS)

An exhaustive nutrition screening using mid-upper arm circumference (MUAC) and oedema for acute malnutrition was conducted by sector partners for 369 children of 6-59 months. Of the 369 children screened, the MUAC reading indicated that 15 children were recorded in the red category, 78 children in the yellow category and 276 children in the green category. No case of oedema was reported in the 6 LGAs assessed.

The results also included 96 children who arrived from neighbouring countries (51 in Bama, and 6 in Gwoza LGA, and 7 in Monguno LGA and 29 in Ngala LGA). Of all the 96 children measured, 2 were recorded in the red category, 17 in the yellow category, and 77 were in the green category. All children found with acute malnutrition have been admitted for treatment. Please note, the data presented are not surveillance results and should be interpreted with caution.

LGA	MUAC Categories						Total
	Green (>12.5cm)		Yellow (11.5cm - 12.5cm)		Red (<11.5cm)		
	Inaccessible	Accessible	Inaccessible	Accessible	Inaccessible	Accessible	
Bama	10	151	1	59	0	10	231
Dikwa	17	0	5	0	1	0	23
Gwoza	30	25	9	0	1	0	65
Kala Balge	1	0	0	0	1	0	2
Monguno	1	9	0	1	0	0	11
Ngala	0	32	0	3	0	2	37
<b>Total</b>	<b>59</b>	<b>217</b>	<b>15</b>	<b>63</b>	<b>3</b>	<b>12</b>	<b>369</b>

■ Nourished     
 ■ Moderate Acute Malnutrition (MAM)     
 ■ Severe Acute Malnutrition (MAM)

Please note, the data presented are not surveillance results and should be interpreted with caution.

**Table 1. Details of movements by locations of assessment and locations of arrival / departure - only movements with at least 22 persons are listed below**

Tracking location			Movement location			ARRIVAL	DEPARTURE	GRAND TOTAL			
STATE	LGA	WARD	STATE	LGA	WARD						
ADAMAWA	GIREI	JERA BONYO	ADAMAWA	GOMBI	GUYAKU	22	-	22			
	GOMBI	GOMBI NORTH	ADAMAWA	HONG	GARAHA	144	-	144			
					SONG	SONG WAJE	99	-	99		
					HONG	ADAMAWA	HONG	DAKSIRI	-	39	39
	DAKSIRI	UBA	36	-			36				
	GARAHA	GOMBI NORTH	-	144			144				
	MAYO LOPE	HONG	HILDI	24			-	24			
	LAMURDE	WADUKU	ADAMAWA	HONG	GARAHA	26	-	26			
					MAYO LOPE	57	-	57			
	MAIHA	SORAU A	ADAMAWA	DEMSA	NASARAWO DEMSA	24	-	24			
	MICHIKA	MICHIKA 1	ADAMAWA	GIREI	HUSARA/TAMPUL	-	49	49			
					ASKIRA UBA	HUSARA/TAMPUL	-	49	49		
					DEMSA	DEMSA	36	-	36		
					TUMBARI/NGABILI	MUBI NORTH	BETSO	-	26	26	
	NUMAN	BOLKI	ADAMAWA	NUMAN	BOLKI	-	39	39			
SONG	SONG WAJE	ADAMAWA	GOMBI	GOMBI SOUTH	-	61	61				
BORNO	ASKIRA/UBA	DILLE/HUYUM	KATSINA	DUTSIN MA	DABAWA	43	-	43			
			ADAMAWA	MAIHA	SORAU A	59	-	59			
			BORNO	CHIBOK	MBALALA	49	-	49			
	BAMA	SHEHURI/HAUSARI/MAIRI	BORNO	BAMA	BUDUWA/BULA CHIRABE	CAMEROON	MARWA	MORA	86	-	86
					MBULIYA/GONIRI/SIRAJA	180	-	180			
					BUDUWA/BULA CHIRABE	-	138	138			
					SABSAWA/SOYE/BULONGU	345	-	345			
					DIPCHARI/JERE/DAR JAMAL/KOTEMBE	284	-	284			
					GULUMBA/JUKKKURI/BATRA	157	-	157			
					GWOZA WAKANE/BULABULIN	BORNO	GWOZA	BITA/IZE	88	-	88
	GWOZA	PULKA/ BOKKO	BORNO	JERE	MAISANDARI	966	-	966			
				GWOZA	DURE/WALAWARABE	68	-	68			
				NGOSHE	74	-	74				
	MONGUNO	MONGUNO	BORNO	JERE	MORA	47	-	47			
					MAISANDARI	1,003	-	1,003			
GOMARI					47	-	47				
NGALA	NGALA	BORNO	NGALA	MAISANDARI	192	-	192				
				MAIDUGURI	MAISANDARI	192	-	192			
NGALA	NGALA	CAMEROON	MARWA	WARSEHE	45	-	45				
				MAKARI	90	-	90				

More individuals did arrive after termination of the reporting period of the current ETT. For a more holistic overview of arrivals following (specific event), a flash report with more information will follow subsequently.

The depiction and use of boundaries, geographic names, and related data shown on maps and included in this report are not warranted to be error free nor do they imply judgment on the legal status of any territory, or any endorsement or acceptance of such boundaries by IOM.

When quoting, paraphrasing or in anyway using the information mentioned in this report, the source needs to be stated appropriately as follows: "Source: International Organization for Migration [month, year], Displacement Tracking Matrix (DTM)".

\* MUAC data is provided by UNICEF

For more information or to report an alert, please contact: DTM Nigeria: [iomnigeria@iom.int](mailto:iomnigeria@iom.int)

<https://displacement.iom.int/nigeria> ; <https://dtm.iom.int/nigeria>

