

1 SEP - 5 OCT 2021

The DTM Emergency Event Tracking (EET) tool is deployed with funding from the European Union to track sudden displacement and population movements. Activated on a need basis, EET utilises a broad network of community focal points (CFP) to capture best estimates of the affected population presence, with one focal point interviewed per community. From 1 September 2021, DTM teams activated EET in Afghanistan to monitor the displacement of individuals and conditions of communities following episodes of drought and rapid political changes.

This report intends to provide a snapshot of the current situation based on the latest and best available information from the EET up until 5 October. It also serves to fill information gaps and support humanitarian operations on the ground while more comprehensive data and analysis are being produced. It is not meant to provide comparative trend analysis or an overall picture of displacement situation in the country.

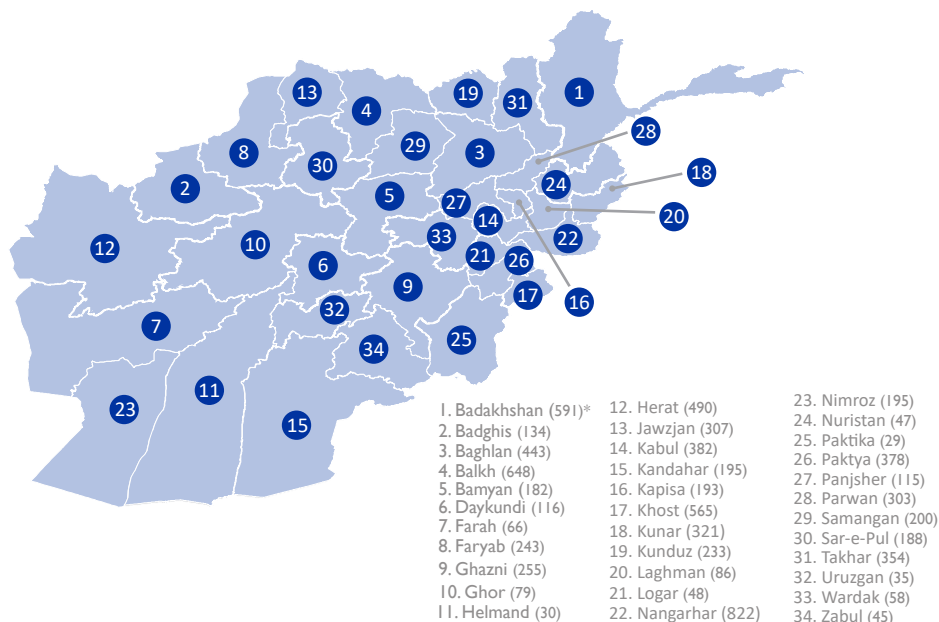
DTM teams conducted data collection among 1,716 new communities this week, bringing the total number of assessed communities since the initiation of the EET to 8,376. Data collection has covered 359 districts across 34 provinces in Afghanistan. Community focal points in Helmand, Kunduz and Zabul most frequently reported an increase of IDP arrivals in their communities. Meanwhile, communities in Baghlan, Faryab and Kunduz reportedly experienced an increase in departures more frequently than communities assessed in other provinces, as they are situated in northern provinces most prone to conflict.

## KEY FIGURES

**8,376**  
Community focal points

**3,467,014**  
Households in assessed communities

## ASSESSED PROVINCES



\*The numbers in () refer to the number of communities reached per province

Disclaimer: The boundaries and names shown and the designations used on this map do not imply official endorsement or acceptance by IOM or the United Nations.

## ARRIVAL/DEPARTURE FIGURES\*

	TOTAL	RURAL	PERI-URBAN	URBAN
# CFPs	8,376	6,444	1,198	734
% CFPs who reported an increase in IDP arrivals	53%	49%	64%	70%
# of reported individual IDP arrivals	1,163,604	714,996	213,997	234,611
# of reported family IDP arrivals	164,387	98,887	31,757	33,743
% CFPs who reported an increase in departures	70%	68%	78%	75%
# of reported individual departures	1,759,828	1,113,790	456,931	189,107
# of reported family departures	237,834	148,212	66,232	23,380

## PRIORITY NEEDS (RANKED)

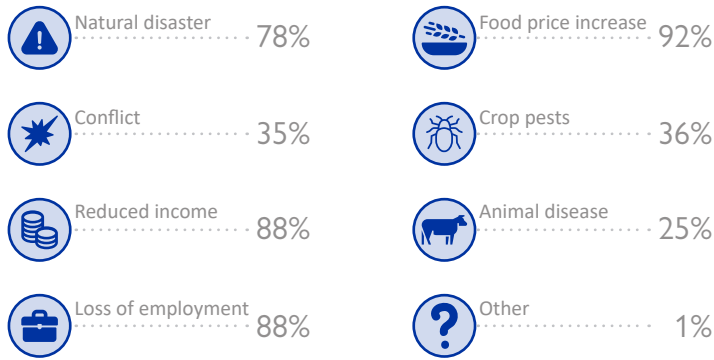
<b>1</b>	FOOD
<b>2</b>	DRINKING WATER
<b>3</b>	IMMEDIATE HEALTHCARE

\*Please note that CFPs were only asked for the number of individual/family arrivals if they reported having seen an increase in IDP arrivals to their community. For example, 1,163,604 is the number of arrivals reported among all assessed communities who have also reported an increase in arrivals. The same applies for departure numbers.

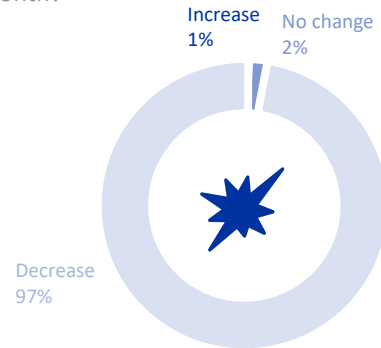
DISCLAIMER: This document was produced with the financial assistance of the European Union. The views expressed herein can in no way be taken to reflect the official opinion of the European Union.

### COMMUNITY SHOCKS IN THE PAST MONTH

(multiple answers possible)



How has the level of conflict changed compared to last month?



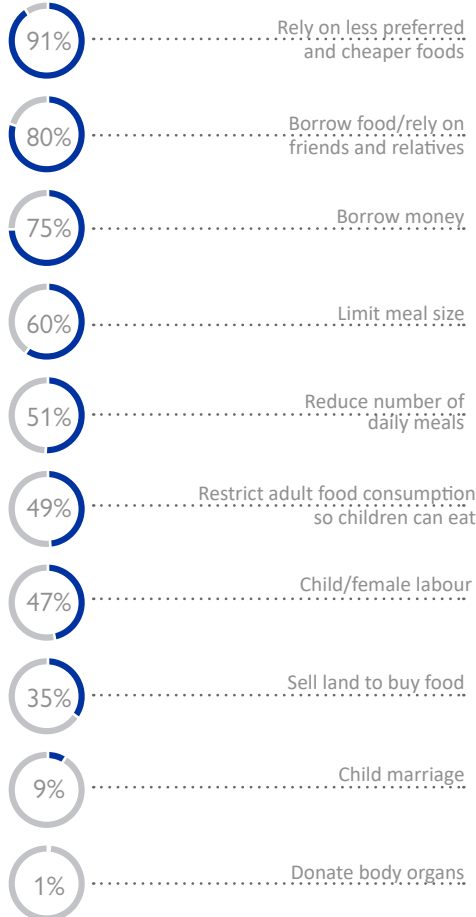
Among those who experienced natural disasters, 83% reported experiencing drought, 7% flood and 2% extreme cold weather.

### FOOD SECURITY

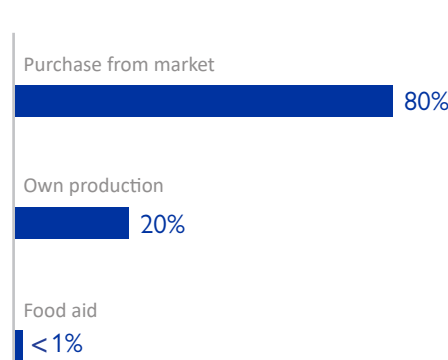
Is there sufficient food in the area?



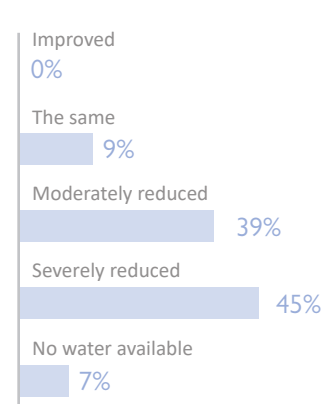
What are the main coping mechanisms for people who struggle to access food? (multiple answers possible)



What is the main source of staple food for most of your community household?

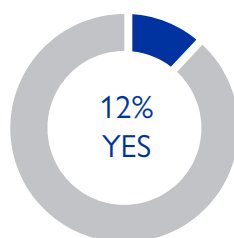


How is the drinking water availability this year compared to last year at the same time?

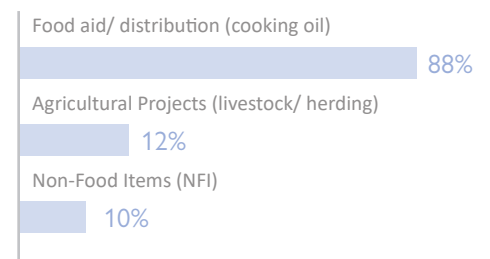


### EXTERNAL ASSISTANCE

Have your community households benefitted from any external assistance in the past month?



If so, what type of assistance? (multiple answers possible, top 3 answers)



NOTE: When the label "Multiple answers possible" appears above a graph, it means that Key Informants were allowed to provide more than one answer to the question. For this reason, totals do not add up to 100%.