

Top LGAs with variation

Round 7
Round 6

Guma
88,257 +41,029 IDPs
47,228

Funtua
16,751 +12,674 IDPs
4,077

Agatu
75,507 -5,311 IDPs
80,818

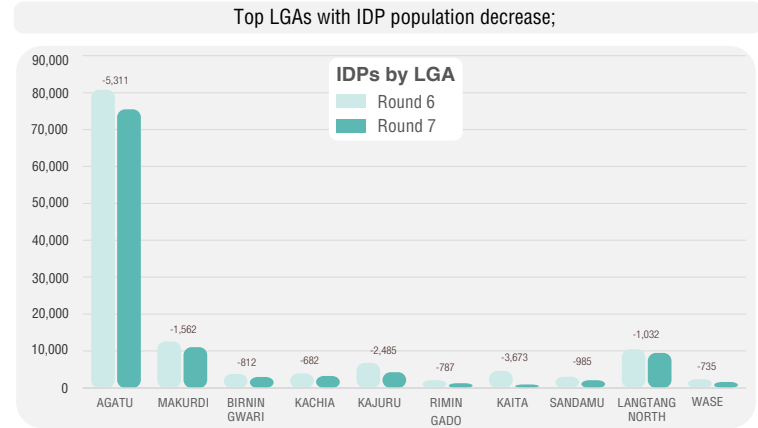
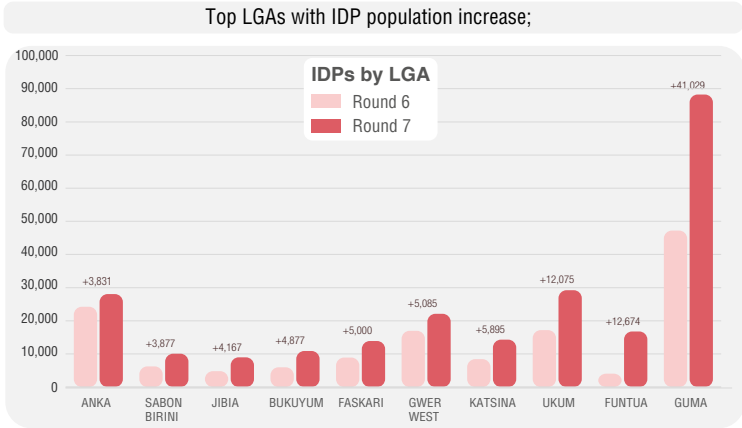
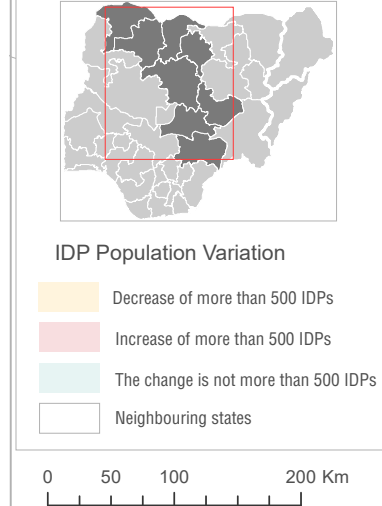
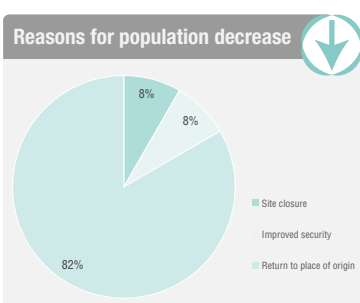
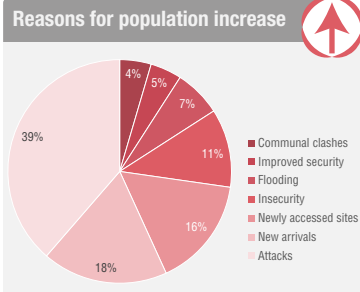
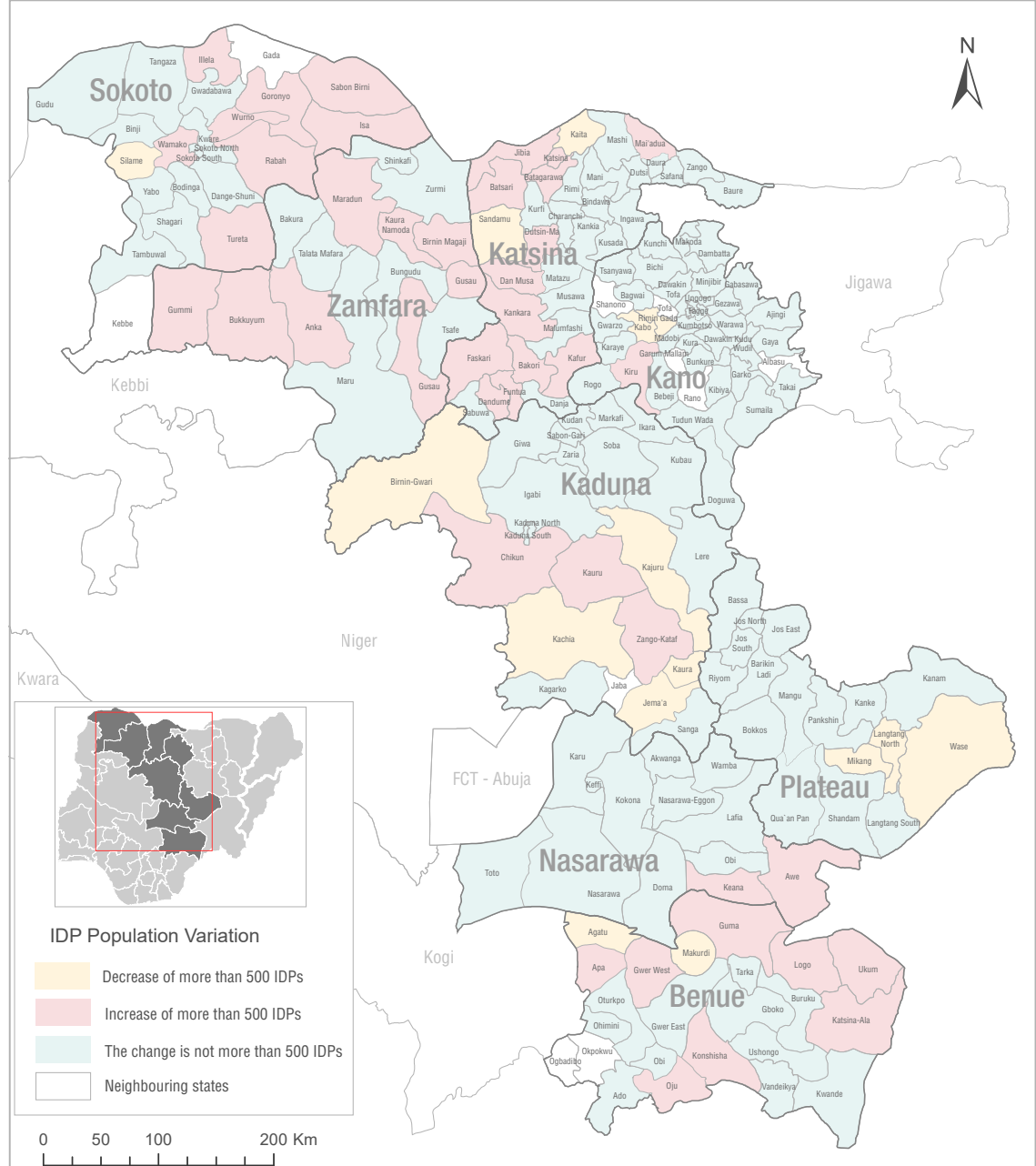
Kaita
907 -3,673 IDPs
4,580

Guma LGA: This increase can be explained by numerous attacks in the LGA ahead of Round 7 assessments and the influx of IDPs from villages in the neighbouring state of Nasarawa. Since April 2021, incessant clashes between farmer communities and pastoralists have severely impacted the lives of the residents of Guma LGA and led to the forced displacement of many inhabitants of the LGA. As a result of these clashes, nine new IDP sites were

Funtua LGA: As Funtua LGA is considered rather stable and secure, the IDP population increased due to the influx of displaced households from other LGAs (mainly Faskari, Sabuwa, Dandume and Batsari LGAs where frequent attacks by bandits were reported).

Agatu LGA: The IDP population decreased as a result of IDPs returning to their farmlands ahead of the rainy

Kaita LGA: The IDP population decreased as a result of the voluntary relocation of IDPs who were residing in Gafia ward. They returned to their locations of origin in the LGAs Batsari and Jibia in search for greener pasture and to rebuild and repair their shelters.



The depiction and use of boundaries, geographic names, and related data shown on maps and included in this report are not warranted to be error free nor do they imply judgment on the legal status of any territory, or any endorsement or acceptance of such boundaries by IOM. When quoting, paraphrasing, or in any other way using the information mentioned in this report, the source needs to be stated appropriately as follows: "Source: Displacement Tracking Matrix (DTM) of the International Organization for Migration (IOM), 2021."