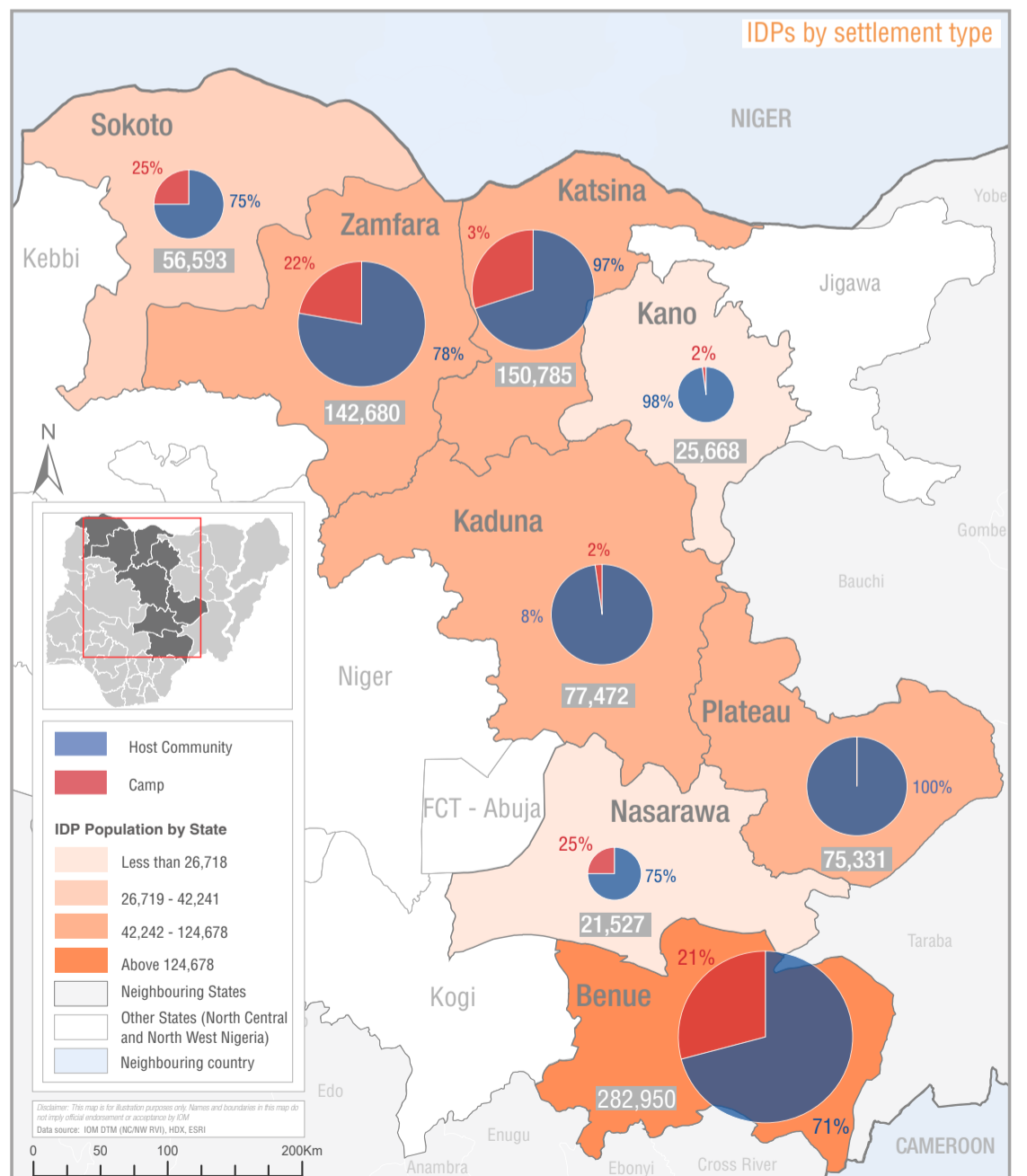
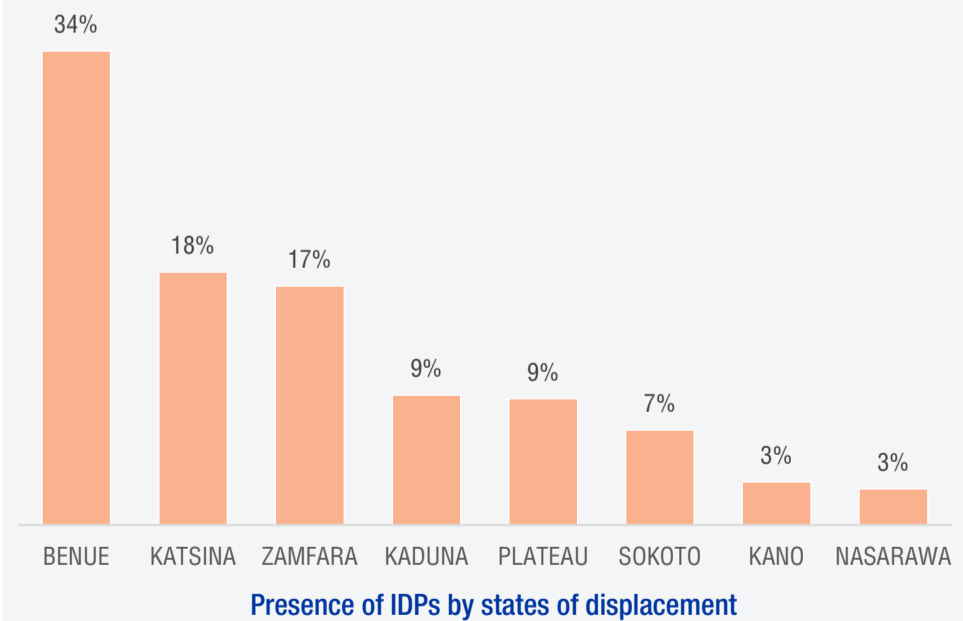
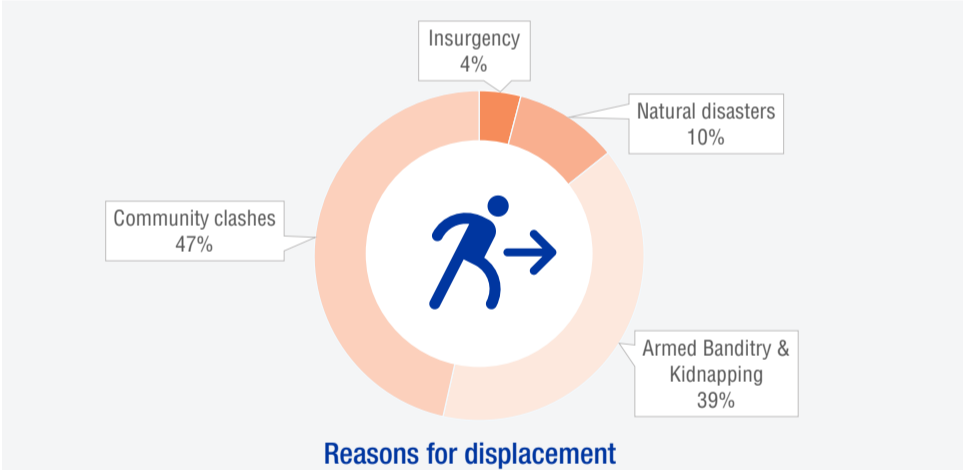
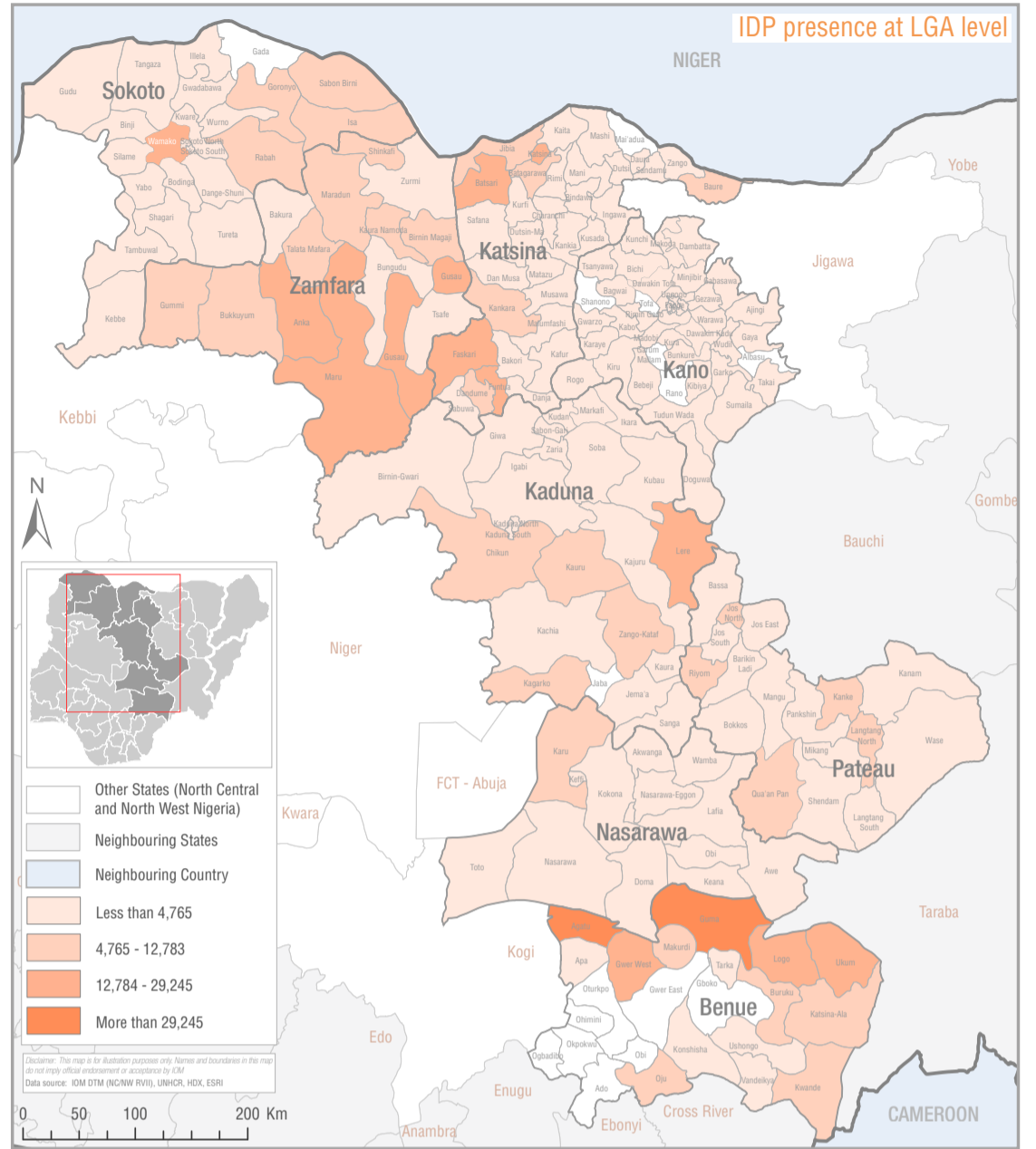
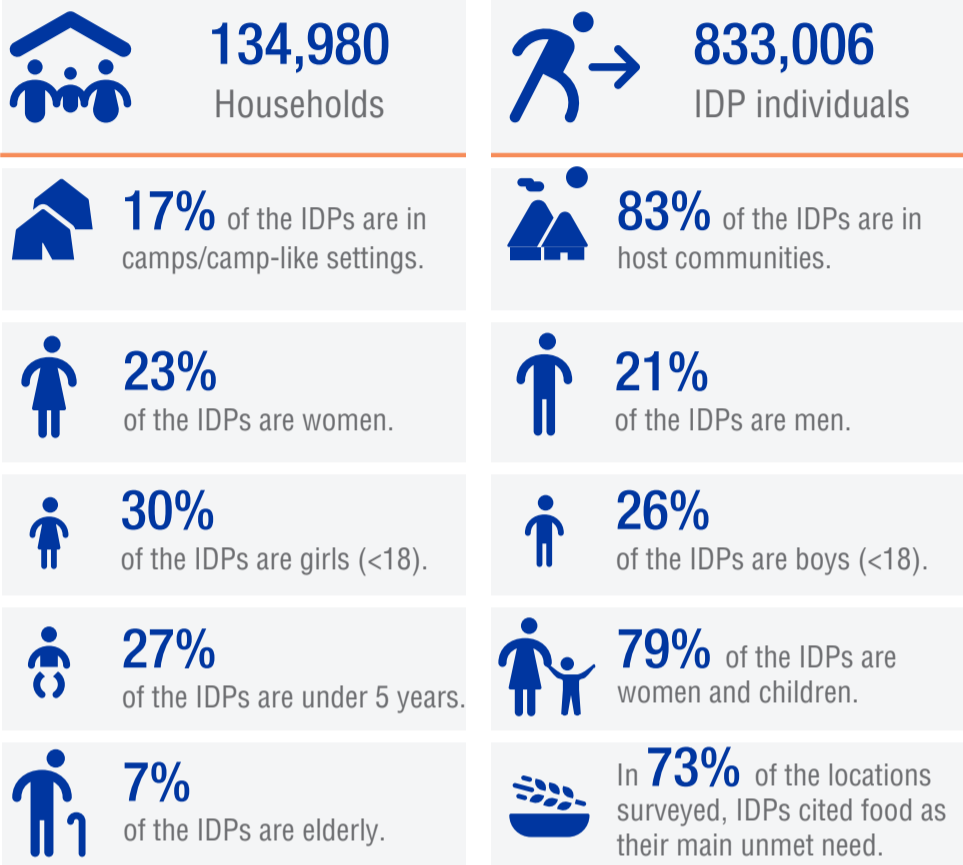


IOM manages the Displacement Tracking Matrix (DTM) in Nigeria and other countries around the world, to support humanitarian communities with data on displacement and mobility. This information management product determines the status, locations, and needs of people affected by the ongoing conflict in North West and North Central Nigeria. As per Round 7 (assessed between 21 June and 27 July), the DTM has identified 833,006 IDPs (134,980 households) across Benue, Kaduna, Kano, Katsina, Plateau, Nasarawa, Sokoto and Zamfara States. This represents an increase of 20 per cent (137,092 individuals) since the Round 6 assessment.



DISCLAIMER: The depiction and use of boundaries, geographic names, and related data shown on maps are not warranted to be error free nor do they imply judgment on the legal status of any territory, or any endorsement or acceptance of such boundaries by IOM.