



DTM

Displacement Tracking Matrix

**MIGRANT PRESENCE MONITORING (MPM)
BASELINE ASSESSMENT – ROUND 1
AUGUST 2021
LEBANON**

The International Organization for Migration (IOM) is committed to the principle that humane and orderly migration benefits migrants and society. As an intergovernmental organization, IOM acts with its partners in the international community to: assist in meeting the operational challenges of migration; advance understanding of migration issues; encourage social and economic development through migration; and uphold the human dignity and well-being of migrants.

The opinions expressed in the report are those of the authors and do not necessarily reflect the views of the International Organization for Migration (IOM). The information contained in this report is for general information purposes only. Names and boundaries do not imply official endorsement or acceptance by the International Organization for Migration (IOM).

IOM Lebanon endeavours to keep this information as accurate as possible but makes no claim – expressed or implied – on the completeness, accuracy and suitability of the information provided through this report.

This publication was made possible through the support provided by the Government of Cyprus, the Government of Denmark, the Government of the Netherlands, the Government of Germany, and the Government of Kuwait.

International Organization for Migration
Address: Jnah, Nicolas Sursock Road,
Beirut

Email: iombeirut@iom.int

Website: dtm.iom.int/Lebanon

© 2021 International Organization for Migration (IOM)

© Cover photo by Muse Mohammed

All rights reserved. No part of this publication may be reproduced, stored in a retrieval system, or transmitted in any form or by any means, electronic, mechanical, photocopying, recording, or otherwise without the prior written permission of the publisher.

TABLE OF CONTENTS

1. Introduction.....	01
2.Key Figures.....	03
3.Methodological Overview.....	04
4.Challenges and Limitations.....	05
5.Population Distribution Overview.....	06
6.Nationality Distribution Overview.....	07
7.Population Distribution by Nationality.....	08
I. Ethiopian Nationals	09
II. Bangladeshi Nationals.....	10
III. Egyptian Nationals.....	11
IV. Sri Lankan Nationals.....	12
V. Sudanese Nationals.	13
VI. Iraqi Nationals.....	14
8.Mobility Trends.....	15
Annex	16
References.....	17

1. INTRODUCTION

This report presents the findings from the International Organization for Migration's (IOM) Migrant Presence Monitoring (MPM) Round 1 data collection exercise conducted across Lebanon. The exercise took place between October 2020 and June 2021 and covered nearly all cadastres in Lebanon. (1) This report represents a first step to strengthen the evidence base on migrant numbers in Lebanon.

The MPM baseline assessment is designed to systematically assess, through a series of MPM Rounds, cadastres (Admin 3 areas) in Lebanon to quantify the presence of migrants per this administrative area to support operational assistance, coordination, and planning. The data collection is based on estimations received from Key Informants (KI) who are mostly composed of Mukhtars, local authorities of these areas, and Municipality officials. The MPM relies on KIs to provide reliable information for a specific and known area. For data collection, the administrative area of a cadastre was chosen as it is the smallest administrative unit with dedicated administrative officers, and the areas are small enough to ensure that information collected on the area are reliable. As a result of the situation and arrangements of migrant populations, repeated rounds will strengthen the data collected and resultant baseline.

The MPM baseline assessment follows the methodology of IOM's global Displacement Tracking Matrix (DTM) Mobility Tracking component. Tailored to meet the specific operational context in Lebanon, the MPM baseline assessment gathers and analyzes data to disseminate critical multi-layered information on the presence and mobility of migrants as well as Lebanese nationals. This assessment aims to complement existing data collection exercises and it is implemented in coordination with key actors to maximize synergies, interoperability and avoid duplication. (IOM, 2017)

In this exercise, data was collected on population size (number of migrants), nationality of migrants, and mobility trends (inflow and outflow) to and from the cadastre. Questions regarding the reasons for mobility and volume of flows were asked to migrants and to Lebanese nationals. KIs were also asked information related to the rapid deterioration of socio-economic conditions from October 2019, the Beirut Port explosion (from August 2020), COVID-19 impacts and other health reasons, among other drivers. More details on the methodology of the exercise can be found on page 04. The MPM data collection exercise is an ongoing process with the purpose of building on these estimates, and with a second round in the upcoming year for further fine-tuning as more concerted efforts take place with various partners.

PURPOSE OF THE MIGRANT PRESENCE MONITORING

The main purpose of the MPM assessment is to derive quantitative estimates of migrant presence at the cadastre level in Lebanon to generate further insights on population presence and characteristics for operational assistance, planning, and response. While MPM does not capture disaggregated data of the migrant populations present in the area by factors such as age, gender and legal status and therefore does not allow for all known variation in these and other factors to be captured or quantified, data on populations with known refugee status has been collected. This data does not supersede official refugee figures published by the Lebanese Palestinian Dialogue Committee (LPDC 2017) and United Nations Relief and Work Agency for Palestinian Refugees in the Near East (UNRWA) as well as the Lebanon Crisis Response Plan (LCRP 2021) and United Nations High Commissioner for Refugees (UNHCR).

The information from IOM-MPM's findings, complementary to data from past assessments will also enable partners across the international community and Lebanese partners to have access to an evidence base on migrant presence, alongside migration drivers, patterns, and intentions, to support well-informed, targeted, and coordinated response. The complementary evidence generated from the MPM exercise also serves as a baseline and tertiary source for triangulation for other data collection exercises.

(1) IOM assessed 1,610 cadasters in Lebanon rather than the complete 1,627 cadasters as the remaining 17 cadasters were residual unpopulated areas on the border of certain governorates.

Among the possible scope of future operations is use of the IOM-MPM baseline assessment to build a better understanding of migrant populations to inform relevant programmes. For example, MPM has facilitated the development of a sampling frame of migrants for the Multi-Sectorial Needs Assessment (MSNA) 2021 exercise led by the Humanitarian Country Team (HCT).

OFFICIAL FIGURES FOR REFUGEE POPULATIONS

The official population figures of Palestinian and Syrian refugees in Lebanon and a more comprehensive overview of their needs and situation across Lebanon, can be located through the Lebanese Palestinian Dialogue Committee (LPDC 2017) Census for 2017-2018 and the Lebanon Crisis Response Plan (LCRP 2021), 2017-2021.

The 2021 planning estimate of Palestine refugees residing in the country in need of humanitarian assistance in Lebanon is 180,000. In addition, 27,700 Palestine refugees from Syria are also present in Lebanon. These figures are represented in the 2021 LCRP and are based on the LPDC Census conducted in 2017.

In the 2021 LCRP, an estimated 1.5 million Syrian nationals had fled their country to reside in Lebanon. The population was in majority composed of women and children. These figures are represented in the 2021 LCRP.

The LPDC Census report focused on Lebanon's various refugee population groups, including Palestine Refugees living in Lebanon (PRL), Palestine Refugees from Syria (PRS), Lebanese and Syrian nationals. In addition to this, the LCRP collected data on two other large refugee groups, Iraqis and Sudanese nationals while also identifying other small refugee populations as present in Lebanon. These other groups included people from Bangladesh, Eritrea, Ethiopia, Iran, Nigeria, and Yemen. These populations are inclusive to the figures presented in this report. Definitions for these categories can be found in the Annex.

UNDERSTANDING NEEDS AND VULNERABILITIES

The MPM Round 1 baseline assessment maps populations at the cadastre level for operational purposes. It does not capture status and does not measure vulnerability or severity of need. However, IOM acknowledges variations in need and vulnerability among the different population groups represented in this report.

Due to the socioeconomic and political conditions in the country, the lack of livelihood opportunities tied to the economic deterioration have contributed to particularly high unemployment rates among the youth and to tensions between migrant and host communities. Amid these conditions, and growing poverty levels among migrant populations and Lebanese nationals, these groups face significant challenges in securing their needs and remain highly vulnerable. The precariousness of livelihood conditions in Lebanon has made staying increasingly difficult and increased the vulnerability of both migrant populations and Lebanese nationals to exploitation. (IOM, 2021)

2. KEY FIGURES



In total, 1,610 cadastres across 26 districts and 8 governorates were assessed, equivalent to a coverage of 98.96 per cent of all cadastres in Lebanon



So far, through the first round of data collection, an **estimated 207,696** migrants were identified within the 1,610 cadastres in the 26 districts, equivalent to a coverage of 98.96 per cent of all cadastres in Lebanon.



A total of **3,857 key informants** were interviewed between October 2020 and June 2021.



Beirut district reported the highest proportion of Lebanon's migrant population, equal to nearly **60 per cent** of that identified across Lebanon. (2)



The majority of migrants identified in Lebanon are Ethiopian (**31%**), Bangladeshi (**19%**), and Egyptian (**9%**) nationals.

(2) The percentage of migrants reported here does not include Syrian or Palestinian populations. This decision was made on the basis that prior and official figures exist for these two population groups, with comprehensive accounts on PRs, including PRS and PRLs. For the official population figures of Palestine and Syrian refugees in Lebanon, the LPDC Census 2017-2018 and the LCRP 2017-2021 can be referenced.

3. METHODOLOGICAL OVERVIEW

The objective of the MPM is to derive quantitative estimates of the presence of migrant population groups across Lebanon to support advocacy and to inform operational planning and response. The exercise was done in collaboration with the Ministry of Interior and Municipalities, the different municipalities and governors of the assessed areas.

Target Population

Population numbers (individuals) were asked for the following population groups:

- Lebanese nationals
- Migrants (foreign nationals)

Geographic Reference

Areas were based on the HDX (Humanitarian Data Exchange) geo-dataset, obtained in October 2020. Each administrative area is categorised per the following grouping:

Admin 1 for Governorate
Admin 2 for District
Admin 3 for Cadastre
Admin 4 for Neighbourhood (Available for Beirut only)

KI Interviews

DTM interviewed a total of 3,857 KIs, most of whom were Mukhtars (local authorities) of the respective assessed cadastres and municipality officials.

Mobility Trends (Inflow and Outflow)

Questions regarding mobility trends and recorded volumes of flows of migrant populations and of Lebanese nationals were asked to understand population trends of the areas assessed. Information specific to the below have been asked:

- Inflow and outflow information after the beginning of the economic deterioration (October 2019) and after the Beirut Port explosion (August 2020):
 - Lebanese nationals and migrants (leaving)
 - Elsewhere in Lebanon
 - Abroad
 - Lebanese nationals and migrants (arriving)
 - From elsewhere in Lebanon
 - From abroad
- Additional reasons for departure for Lebanese nationals and migrant populations groups were also asked to KIs, with the topics covering:
 - Beirut Port Explosion
 - COVID-19 and other health reasons
 - Economic reasons
 - Other reasons

Rationale for the Unit of Measurement

The MPM relied on key informants to provide reliable information for a specific and known area, and therefore is dependent on existing administrative governance structures. For data collection, cadastres (Admin 3) were chosen on the assumption that each cadastre would have a network of KIs, in addition to the fact that these areas are more manageable than larger districts (admin 2) and governorates (admin 1) such that data collectors could more reliably track the overall situation within a cadastre.

4. CHALLENGES AND LIMITATIONS

The MPM exercise has been designed to systematically assess Lebanon cadastres to determine numbers of migrants per administrative area. This is based on **estimations** received from KIs who are authoritative representatives of these areas. However, while this approach establishes a comprehensive baseline on population groups and mobility trends, some limitations and challenges are to be considered. Below are some of them:

1. IOM conducted assessments covering 1,610 of 1,627, or 98.99 per cent, of cadastres (Admin 3 areas). The remaining 17 cadasters were not included as these constituted residual unpopulated areas on certain governorates' borders.
2. The publicly available list of Mukhtars, which was the first point of contact for building the KI network, was outdated, with some Mukhtars no longer active in the role.
3. Some KIs refused to give any information, and their decision was respected. Others agreed to offer information without consenting to sign their names, and this was also respected.
4. Data collection was affected by local containment measures. Remote interviews took place instead of face-to-face interviews due to lockdown protocols or roadblocks. IOM switched to phone interviews with the KIs for part of the data collection period, and this hindered the enumerators from expanding the KI network in some areas.
5. The figures given by KIs given were only estimates based on their own perception and knowledge of the cadastres. This report clearly recognizes and states this.
6. For some cadastres, the values reported by the KIs varied significantly. A reassessment had to be done to validate the information and ensure the reported values are as acceptable as possible (within the knowledge of the KIs interviewed).
7. Following the previous limitation, estimates reported may be conservative and under-reported. Only through future rounds of assessments can the figures be confirmed with more accuracy.

5. POPULATION DISTRIBUTION OVERVIEW

Figure 1 shows the distribution of migrants identified in all districts. Overall, IOM-MPM has so far identified 207,696 migrant individuals throughout all of Lebanon. Beirut district reported the highest number of migrants at 123,621 individuals, followed by El Meten district at 16,474 migrant individuals, and Sour district at 8,189 migrant individuals. The lowest number of migrant individuals was reported in El Hermel district with 100 migrants individuals.

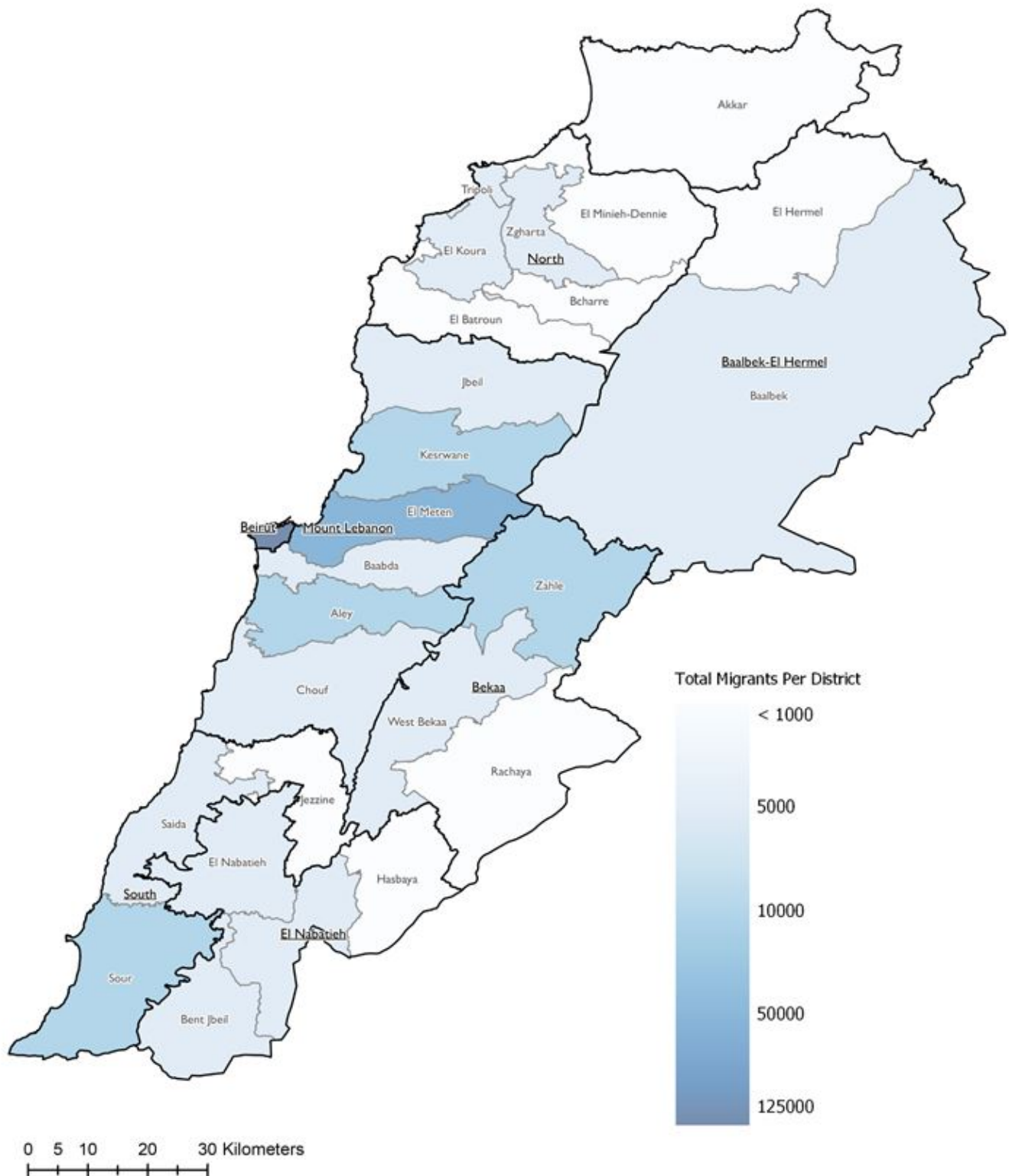


Figure 1a: Distribution of Migrants in Lebanon

5. POPULATION DISTRIBUTION OVERVIEW

Figure 1 shows the distribution of migrants identified in all cadastres in Lebanon. In total, Round 1 found an **estimated 207,696 individuals**. Beirut district reported the highest proportion of migrant population groups at 60 per cent, followed by El Meten at 8 per cent and Sour at 4 per cent. Meanwhile, El Hermel reported the lowest number of migrant population groups with less than 1 per cent (100 migrants in total).

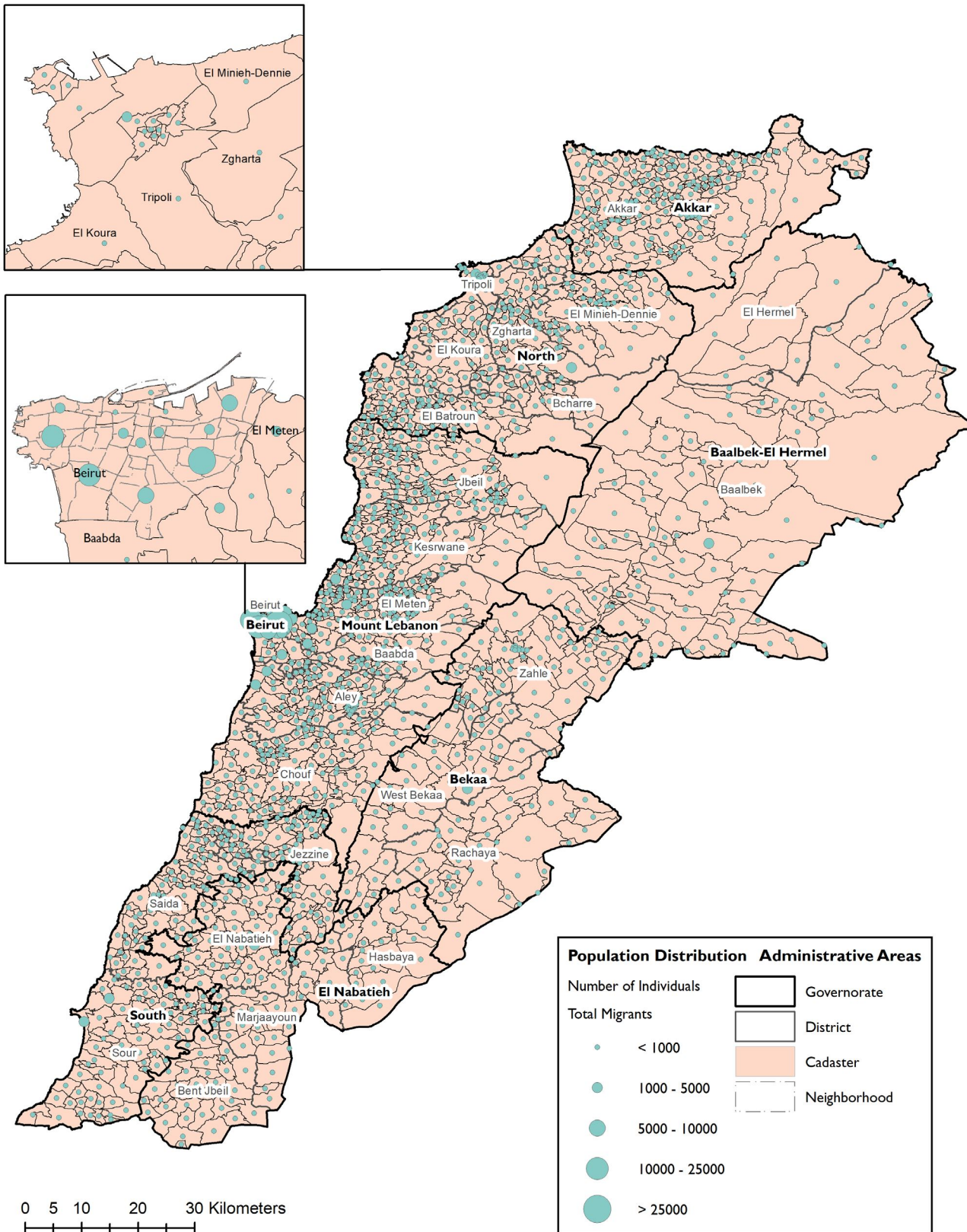


Figure 1b: Distribution of Migrants in Lebanon

6. NATIONALITY DISTRIBUTION OVERVIEW

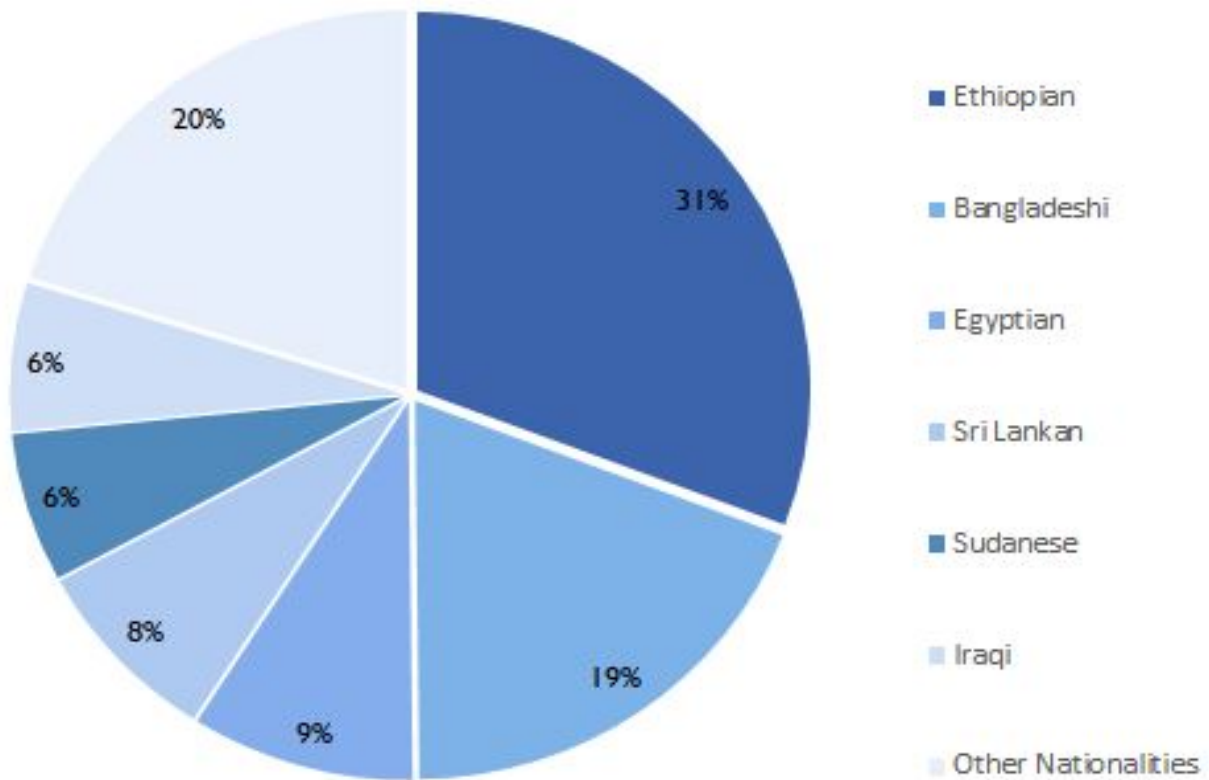


Figure 2: Percentage of Migrants by Nationality/Origin in Lebanon

As seen in figure 2, Round 1 found the majority of identified migrants in Lebanon (207,696 individuals) were reportedly of Ethiopian (31% or 63,931 individuals) origin, followed by Bangladeshi (19% or 39,570 individuals), Egyptian (9% or 19,118 individuals), Sri Lankan (8% or 16,649 individuals), Sudanese (6% or 13,210 individuals), Iraqi (6% or 13,147 individuals) and other nationalities (20% or 42,071 individuals). A further detailed geographic distribution of migrant populations in Lebanon can be found in Table 1 Annex. (3)

Other nationalities identified (see figure 2) included Afghan, Algerian, American, Azerbaijani, Bahraini, Belgian, British, Cameroonian, Canadian, English, Filipino, French, Gabonese, German, Ghanaian, Indian, Iranian, Jordanian, Kazakh, Kenyan, Korean, Libyan, Malian, Moldovan, Nepalese, Nigerian, Pakistani, Russian, Senegalese, Somali, South African, Saudi Arabian, South Korean, Spanish, Swedish, Swiss, Tongan, Tunisian, Turkish, Ukrainian and Yemeni nationals.

It is important to note that these percentages (figure 2) are exclusive of Syrian and Palestinian populations in Lebanon.

(3) The 2021 planning estimate of Palestine refugee's resident in the country and in need of humanitarian assistance in Lebanon is 180,000 Palestine refugees in Lebanon including a further 27,700 Palestine refugees from Syria who are also present in Lebanon. Also, in the 2021 LCRP, an estimated 1.5 million Syrian nationals had fled the country to reside in Lebanon. Of this 1.5 million refugees there were 879,598 registered Syrian refugees as of November 2020 and 14,819 registered refugees of non-Syrian nationality. These other groups included people from Bangladesh, Eritrea, Ethiopia, Iran, Iraq, Nigeria, Sudan, and Yemen and are inclusive in the figures presented in this report for the respective nationalities. (LCRP, 2021; UNHCR 2021)

7. POPULATION DISTRIBUTION BY NATIONALITY

I. ETHIOPIAN NATIONALS

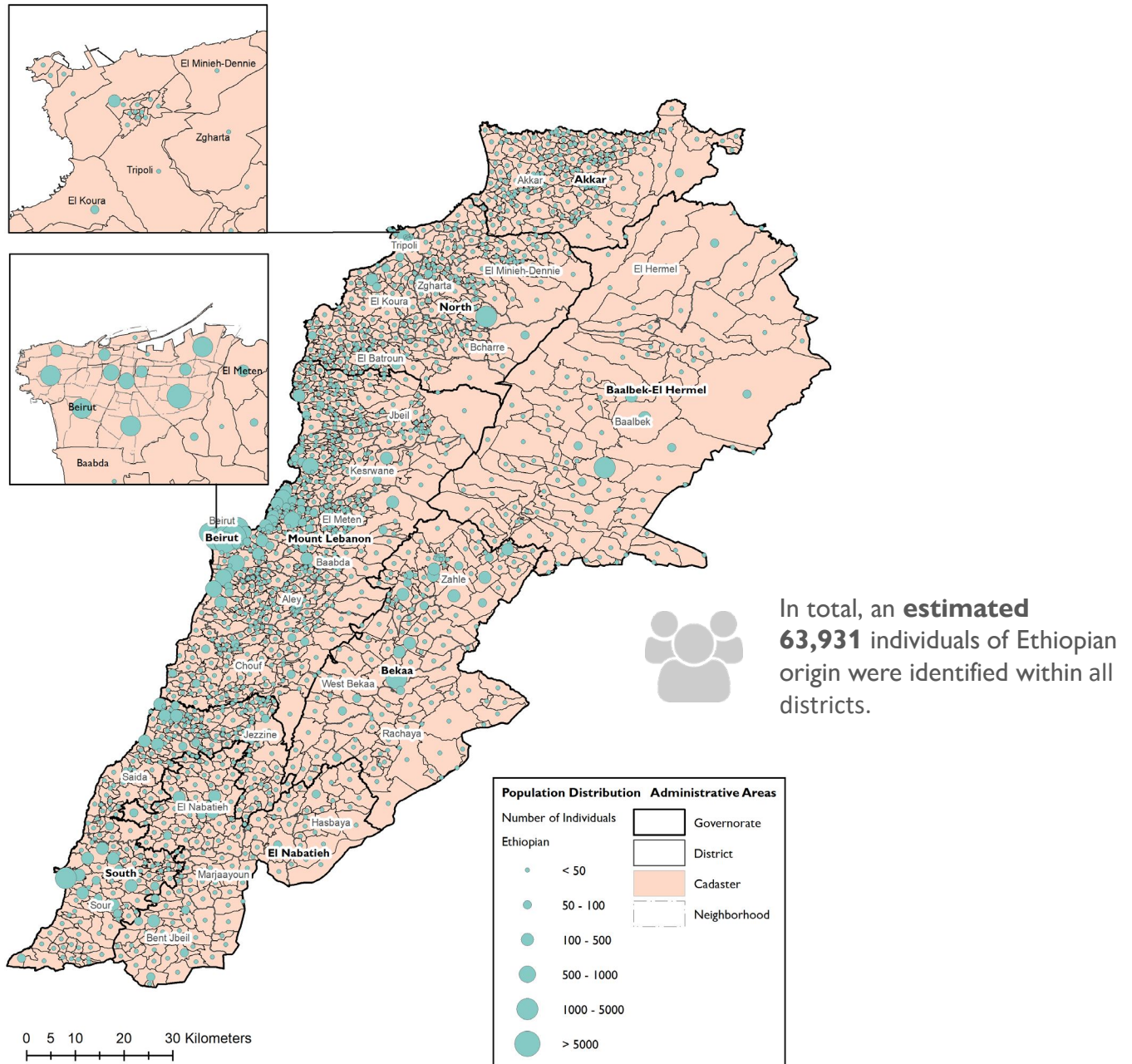


Figure 3: Distribution of Ethiopian Nationals per Cadastre

Figure 3 shows the distribution of Ethiopian nationals reported in the cadastres of Lebanon.

In Round 1, 63,931 Ethiopian nationals were identified in 787 (49%) cadastres out of 1,610 across all 26 districts.

Beirut district reported the highest proportion of Ethiopian nationals (40%), followed by El Meten (8%), Kesrwane (10%), Sour (7%), Baalbek (5%), Saida (5%) and Kerswane (5%), Aley (4%), Zgharta (4%) and West Bekaa (4%), Zhale (3%) and Saida (3%). Between one and two per cent of Ethiopian nationals were living across the other 16 districts. In general, Ethiopian nationals were recorded in all 26 districts.

Achrafieh (Beirut, 19%), Mousaitbeh (Beirut, 7%) and Ras Beirut (Beirut, 6%) were the main neighbourhoods where Ethiopian nationals were residing.

7. POPULATION DISTRIBUTION BY NATIONALITY

II. BANGLADESHI NATIONALS

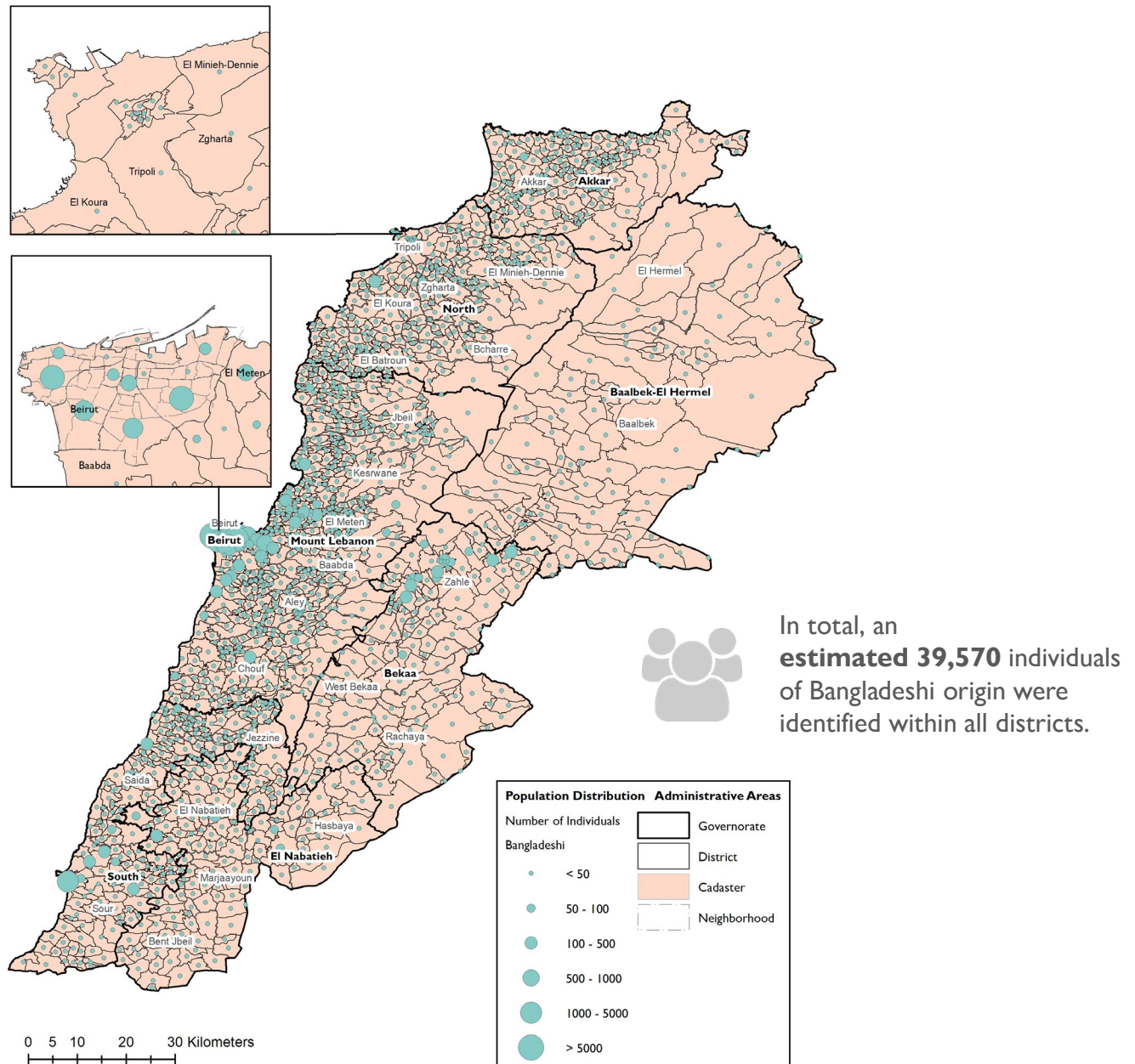


Figure 4: Distribution of Bangladeshi Nationals per Cadastre

Figure 4 shows the distribution of Bangladeshi nationals reported in the cadastres of Lebanon.

In Round 1, 39,570 Bangladeshi nationals were identified in 411 (25%) cadastres out of 1,610 across all 26 districts.

The majority of Bangladeshi nationals were reported in Beirut (57%), followed by El Meten (11%), Sour (7%) and Zahle (4%). A total of six districts had around two to three per cent of Bangladeshi nationals each, namely Kesrwane, Saida, El Nabatieh, Aley, Chouf and Baabda, with Marjaayoun at one per cent. In Tripoli and in El Hermel, there were no Bangladeshi nationals, and in each of the other 13 districts, less than one per cent of Bangladeshi nationals were reported.

Within Beirut district, the neighbourhoods, namely Achrafieh (18%) and Ras Beirut (18%), and Mousaitbeh (9%) were the main areas where Bangladeshi communities were reportedly living.

7. POPULATION DISTRIBUTION BY NATIONALITY

III. EGYPTIAN NATIONALS

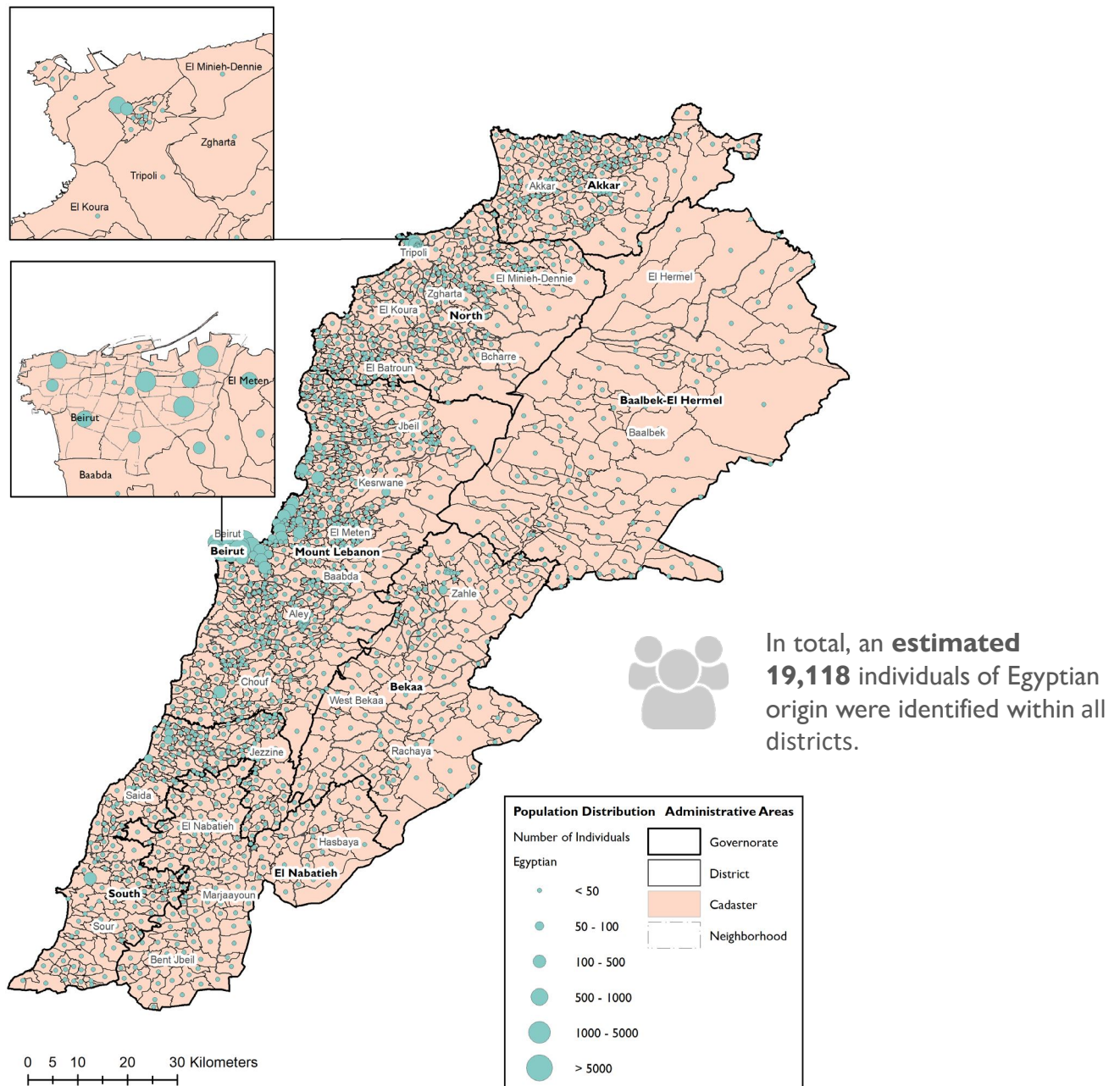


Figure 5: Distribution of Egyptian Nationals per Cadastre

Figure 5 shows the distribution of Egyptian nationals reported in the cadastres of Lebanon.

In Round 1, 19,118 Egyptian nationals were reported during the assessment in 320 (20%) cadastres out of 1,610 across all 26 districts.

Most of whom were reportedly living in 5 districts, namely Beirut (45%), followed by El Meten (24%), Kesrwane (10%), Tripoli (4%) and Saida(2%). Between the remaining 21 districts, 11 per cent of the assessed Egyptian nationals were reported. There was no reported Egyptian national in El Hermel.

Top areas where Egyptian nationals were identified were Achrafieh (12%), Medawar (12%) and Saifi (6%) which are neighbourhoods in Beirut.

7. POPULATION DISTRIBUTION BY NATIONALITY

IV. SRI LANKAN NATIONALS

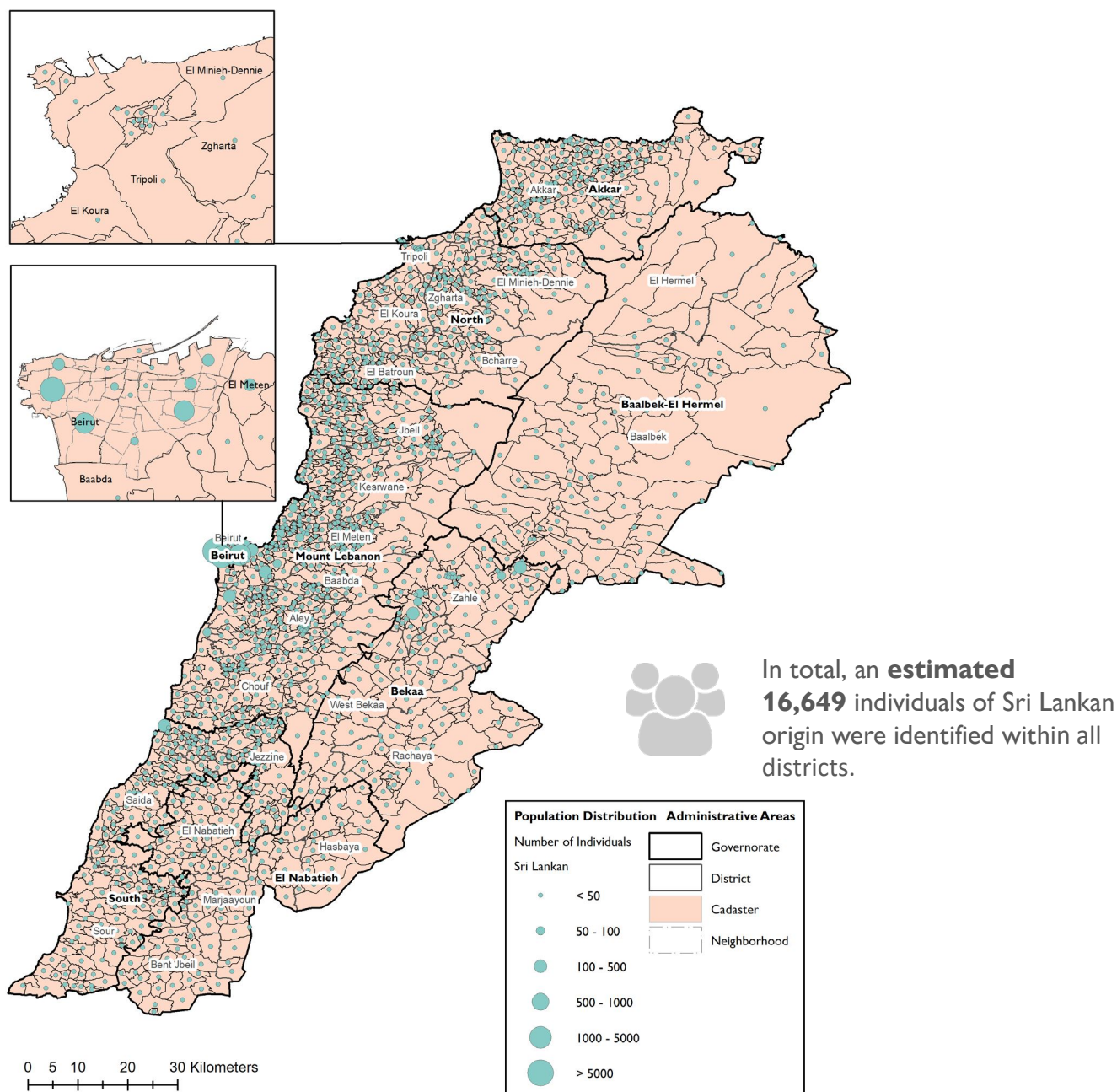


Figure 6: Distribution of Sri Lankan Nationals per Cadastre

Figure 6 shows the distribution of Sri Lankan nationals reported in the cadastres of Lebanon.

In Round 1, 16,649 Sri Lankan nationals were identified in 133 (8%) cadastres out of 1,610 across all 26 districts.

A large majority of Sri Lankan nationals were reported in Beirut district (76%), followed by El Meten (6%), Zahle (6%) and Aley (3%). There was no reported Sri Lankan nationals in Tripoli, Koura, El Hermel, Marjaayoun, and Bcharre districts. The other 17 districts reported around 1 per cent or less than 1 per cent of Sri Lankan nationals each.

Sri Lankan nationals were mainly residing in three neighbourhoods of Beirut, namely Ras Beirut (46%), Achrafieh (17%) and Mousaitbeh (6%).

7. POPULATION DISTRIBUTION BY NATIONALITY

V. SUDANESE NATIONALS

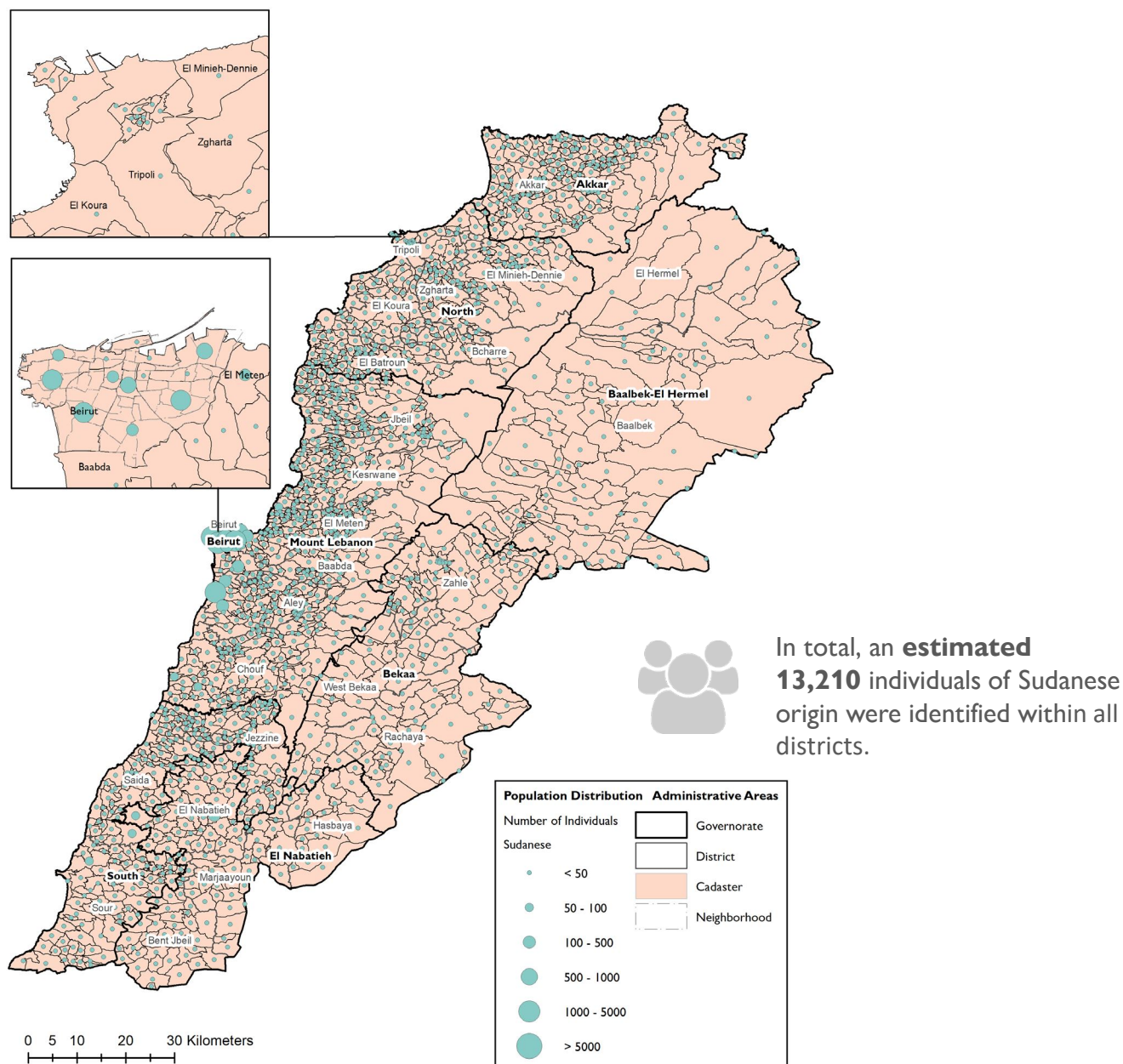


Figure 7: Distribution of Sudanese Nationals per Cadastre

Figure 7 shows the distribution of Sudanese nationals reported in the cadastres of Lebanon.

In Round 1, 3,210 Sudanese nationals were reported during the assessment in 145 (9%) cadastres out of 1,610 across all 26 districts. (4)

Beirut district reported the highest proportion of Sudanese nationals (56%), followed by Aley (20%) and El Nabatieh (6%), El Meten (5%) and Baabda (3%). Among the other 21 districts, 13 reported less than two per cent of Sudanese nationals each. There was no Sudanese national reported in the remaining 8 districts.

Sudanese nationals were identified mainly in Mousaitbeh (16%, Beirut), Choueifat El-Quoubbeh (15%, Aley) and Achrafieh (15%, Beirut).

(4) By the end of April 2019, Sudanese nationals composed 9 per cent of (or 1,584) registered refugees that were non-Syrians. (LCRP, 2021)

7. POPULATION DISTRIBUTION BY NATIONALITY

VI. IRAQI NATIONALS

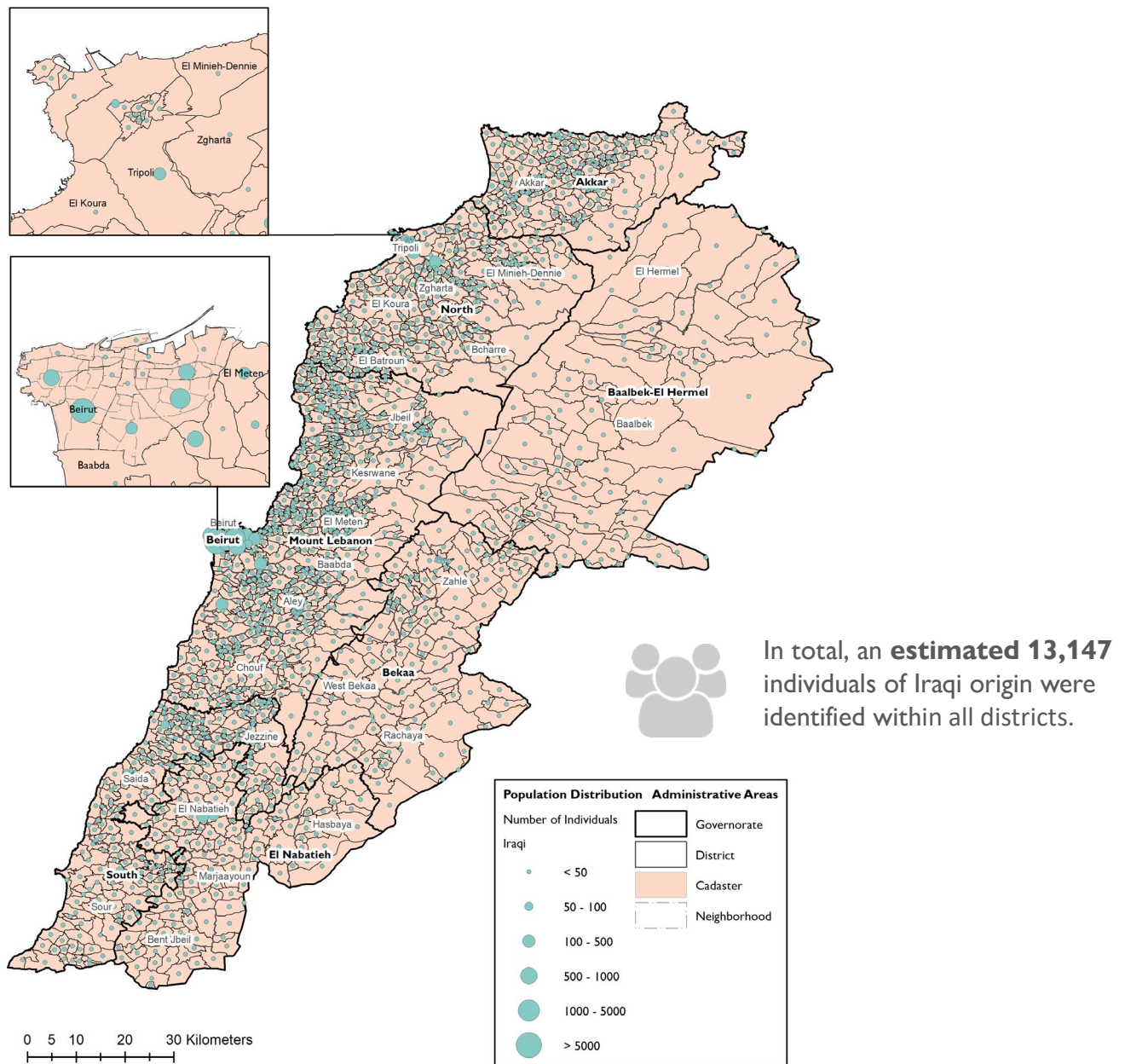


Figure 8: Distribution of Iraqi Nationals per Cadastre

Figure 8 shows the distribution of Iraqi nationals reported in the cadastres of Lebanon.

Across all 26 districts, a total of 13,147 Iraqi nationals were so far identified in 162 (10%) out of the 1,610 cadastres assessed. (5)

Migrants and refugees of Iraqi origin were mainly residing in Beirut district (65%), followed by Baabda (9%), El Meten (8%), El Nabatieh (5%), Tripoli (3%), Sour (2%) and Zgharta (2%). There were no Iraqi national reported in Akkar, El Hermel, Rachaya, Hasbaya and Bcharre districts. One per cent or less of Iraqi nationals were reportedly living across the remaining 14 districts.

Iraqi nationals were mainly residing in Mousaitbeh (39%, Beirut), Achrafieh (12%, Beirut) and Furn Ech-Chebbak (8%, Mount Lebanon).

(5) By March 2021, Iraqi nationals composed 70 per cent of (14,819) registered refugees that were non-Syrians. According to the UNHCR, there are 10,376 registered Iraqis per the reporting date.

8. MOBILITY TRENDS (INFLOW AND OUTFLOW)

Multiple and intersecting crises in Lebanon, namely the explosion in August 2020, the COVID-19 pandemic, and the economic downturn, have brought a heightened risk for mobile populations and an exacerbation of existing and new drivers to migration. MPM baseline data is essential to enable a better understanding of both the risks and the complex interconnected factors to migration drivers.

IOM Lebanon's team asked key informants about their perception on whether mobile populations who left a cadastre (outflow) were going elsewhere in Lebanon or abroad, and which district populations moving to a certain cadastre had come from after the beginning of the economic deterioration starting from October 2019 and after the explosion in August 2020. The data was collected to reflect the flows that occurred in the time period, triggered after these specific mentioned events. The number of flows reported for the period after August 2020 is not inclusive of the flows that occurred after October 2019.

Of the 1,610 cadastres that were assessed in Round 1 of the MPM, 43 per cent (694 cadastres) have witnessed outflows of Lebanese nationals and/or migrants as reported by at least one key informant for each cadastre. On the other hand, inflows to cadastres were observed, as reported by at least one key informant per cadastre, in 20 per cent (326 cadastres) of the assessed 1,610 cadastres.

Lebanese Outflow from Admin 3: in cadastres experiencing outward flows, KIs generally cited that this was for international travel, driven by economic factors.

Based on the perceptions of KIs who still reside in the area of assessment, it has been reported that a total of 380 cadastres experienced outward flows of Lebanese nationals to locations outside of Lebanon after the economic deterioration starting from October 2019, while 227 cadastres observed outward flows after the Port Explosion in August 2020. These outward mobility flows from the cadastres were reported to be for international travel.

Internal movements were also observed. A total of 41 cadastres observed outflows of Lebanese nationals moving elsewhere in Lebanon, after the economy started to decline in October 2019, and 31 cadastres saw outflows after the explosion. Economic factors were cited as the main reasons for the outflows of Lebanese nationals.

Migrants Outflow from Admin 3: in cadastres experiencing outward flows, KIs generally cited that this was for international travel, driven by economic factors.

Migrant populations left Lebanon both after the beginning of the economic deterioration (October 2019) and the port explosion (August 2020). However, after the onset of the economic decline in October 2019, the number of cadastres experiencing outward movements of foreign nationals travelling abroad was significantly higher than the number of cadastres experiencing outward flows abroad as a result of the explosion in 2020. In total, 269 cadastres reported flows to the outside of Lebanon after the beginning of economic deterioration, whereas this number was 158 for the period after the port explosion. These outward mobility flows from the cadastres were reported to be for international travel.

Migrants were also moving internally. After the beginning of the economic deterioration, 38 cadastres reported internal movements, whereas after the explosion, 30 cadastres reported the same. Economic factors were also cited as the main reasons for the outflows of this population group.

Lebanese and Migrants Inflow to Admin 3: inflows were reported on a much smaller scale compared to outflows for both Lebanese and migrants across most cadastres.

Excluding Beirut, 20 cadastres reported inflows of migrant populations following October 2019 and 8 cadastres after August 2020. In total, 128 and 217 cadastres received Lebanese nationals after October 2019 and August 2020, respectively. For Beirut, after the economic deterioration (October 2019) and the Port Explosion (August 2020), KIs reported to have witnessed inflows into 2 of its cadastres (15%) in 2019 and into 4 of its cadastres (30%) in 2020.

DEFINITIONS

Migrant is defined by IOM as an umbrella term, not defined under international law, reflecting the common lay understanding of a person who moves away from his or her place of usual residence, whether within a country or across an international border, temporarily or permanently, and for a variety of reasons. The term includes a number of well-defined legal categories of people, such as migrant workers; persons whose particular types of movements are legally defined, such as smuggled migrants; as well as those whose status or means of movement are not specifically defined under international law, such as international students. (IOM, Glossary on Migration, 2019)

Refugee under Article 1 of the Convention and Protocol relating to the status of refugees by the UNHCR (1967), a refugee is defined as a person who is outside his/her country of nationality or habitual residence; has a well-founded fear of persecution because of his/her race, religion, nationality, membership in a particular social group or political opinion; and is unable or unwilling to avail himself/herself of the protection of that country, or to return there, for fear of persecution.

Palestine refugees (PRs) follows UNRWA's definition under its operational definition geared to the provision of services. Palestine refugees are "persons whose normal place of residence was Palestine during the period 1 June 1946 to 15 May 1948, and who lost both home and means of livelihood as a result of the 1948 conflict" and their descendants through the male line. Non-Palestinian husbands of a Palestine Refugee woman and their children are not registered as Palestine Refugees but have access to UNRWA services. (LPDC, 2017) Registration with UNRWA, including of births, deaths, and changes of residence, is an entirely voluntary process, as is the provision of any updates on civil status or location. Since 2020, UNRWA figures includes refugees who are residing in Lebanon and abroad.

Palestine Refugees from Syria (PRS) are Palestinian refugees registered with UNRWA in Syria Field who took refuge in Lebanon as a result of the Syrian war since 2011. (ibid.)

Palestine Refugees living in Lebanon (PRLs) are refugees registered with Department of Refugee Affairs (DPRA) or with UNRWA. In Addition to 1948 Palestinian refugees, DPRA register Palestinian refugees who arrived in Lebanon following the 1967 Arab-Israeli war. (ibid.)

ANNEX

Below is a table with the **population estimates** (percentages expressed per district as a total of that population group in all cadasters):

Governorate	District	Ethiopian	Bangladeshi	Egyptian	Sri Lankan	Sudanese	Iraqi	Sum of Other Nationalities	Total	Percentage of the Cadasters Covered
Akkar	Akkar	266	127	153	43	10	0	0	599	100%
Baalbak Hermel	Baalbek	3,383	157	53	14	6	78	28	3,719	100%
Baalbak Hermel	El Hermel	100	0	0	0	0	0	0	100	100%
Beirut	Beirut	25,452	22,478	8,581	12,653	7,463	8,352	38,642	123,621	100%
Bekaa	Rachaya	315	17	10	46	0	0	5	393	100%
Bekaa	West Bekaa	2,342	277	17	89	0	29	0	2,754	100%
Bekaa	Zahle	2,134	1,726	181	971	10	107	0	5,129	100%
El Nabatieh	Bent Jbeil	1,358	232	27	60	63	37	29	1,806	100%
El Nabatieh	El Nabatieh	1,461	990	124	110	739	640	23	4,087	100%
El Nabatieh	Hasbaya	225	118	1	108	0	0	32	484	100%
El Nabatieh	Marjaayoun	546	390	22	0	87	100	46	1,191	100%
Mount Lebanon	Aley	2,782	945	71	553	2,675	162	100	7,288	100%
Mount Lebanon	Baabda	1,591	577	241	71	432	1,245	402	4,559	100%
Mount Lebanon	Chouf	1,368	901	394	176	295	25	100	3,259	100%
Mount Lebanon	El Meten	4,878	4,214	4,667	997	690	1,005	23	16,474	100%
Mount Lebanon	Jbeil	799	255	243	55	6	113	190	1,661	100%
Mount Lebanon	Kesrwane	3,251	1,232	1,836	187	67	192	886	7,651	100%
North	Bcharre	245	15	8	0	10	0	8	286	100%
North	El Batroun	553	77	137	56	0	16	0	839	100%
North	El Koura	962	341	83	0	95	19	3	1,503	100%
North	El Minieh-Dennie	286	178	47	54	0	10	13	588	100%
North	Tripoli	500	0	1,400	0	0	400	1,000	3,300	100%
North	Zgharta	2,463	213	85	125	0	209	3	3,098	100%
South	Jezzine	487	267	39	15	1	1	13	823	100%
South	Saida	1,993	1,129	445	233	293	190	12	4,295	100%
South	Sour	4,191	2,714	253	33	268	217	513	8,189	100%
Total		63,931	39,570	19,118	16,649	13,210	13,147	42,071	207,696	100%

REFERENCES

International Organization for Migration (IOM)

- 2017 Methodological Framework used in Displacement Tracking Matrix Operations for Quantifying Displacement and Mobility, IOM Global DTM Team, Geneva
- 2019 International Migration Law. Glossary on Migration, Edition 34, IOM Geneva
- 2021 Needs and Vulnerability Assessment of Migrants in Lebanon, IOM Lebanon

Lebanon Crisis Response Plan (LCRP)

- 2021 Lebanon Crisis Response Plan, 2017-2021 (2021 update)

Lebanese Palestinian Dialogue Committee (LPDC)

- 2017 Key Findings Report (Population, Buildings and Housing Units), Central Administration of statistics, Palestinian Central Bureau of Statistics (2018). The Population and Housing Census in Palestinian Camps and Gatherings

United Nations High Commissioner for Refugees (UNHCR)

- 1967 Convention and Protocol relating to the Status of Refugees, Geneva, Switzerland: Office of the Communications and Public Information Service
- 2021 Monthly Statistical Report for Iraqis

United Nations Relief and Works Agency for Palestine Refugees in the Near East (UNRWA)

- 2019 Syria Regional Crisis, Emergency Appeal
- 2021 Syria Regional Crisis, Emergency Appeal



iombeirut@iom.int



<https://dtm.iom.int/lebanon>



**MINISTRY OF
FOREIGN AFFAIRS
OF DENMARK**
Danida



Ministry of Foreign Affairs of the
Netherlands