



# EMERGENCY TRACKING TOOL (ETT)

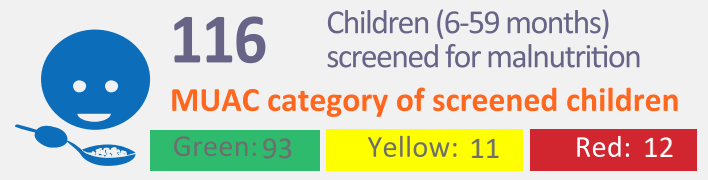
The DTM Emergency Tracking Tool (ETT) is deployed to track and to collect information on large and sudden population movements, provide frequent updates on the scale of displacement and quantify the affected population when needed. As a subcomponent of the Mobility Tracking methodology in Nigeria, ETT utilises direct observation and a broad network of key informants to capture best estimates of the affected population per location, enabling targeted humanitarian response planning.

## ETT Report: No. 238 | 23 - 29 August 2021

### MOVEMENTS



### NEW ARRIVAL SCREENING BY NUTRITION PARTNERS

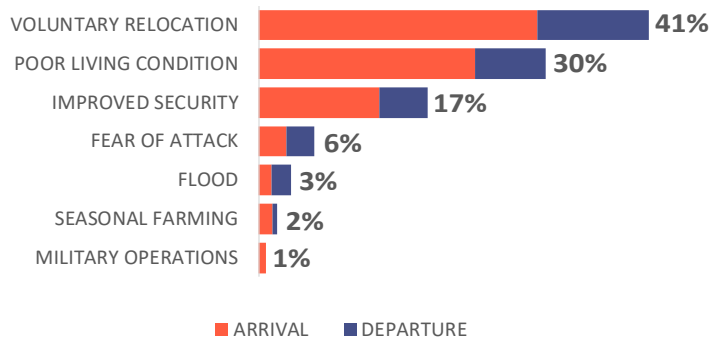


Between 23 and 29 August 2021, a total of 2,180 movements were recorded in the states of Adamawa and Borno. The recorded movements consisted of 1,538 arrivals and 642 departures. Arrivals were recorded at locations in Askira/Uba, Bama, Gwoza, and Monguno Local Government Areas (LGAs) of the most conflict-affected state of Borno and in Demsa, Fufore, Girei, Gombi, Hong, Lamurde, Madagali, Maiha, Michika, Mubi North, Mubi South, Numan, Song, Yola North, and Yola South LGAs of Adamawa.

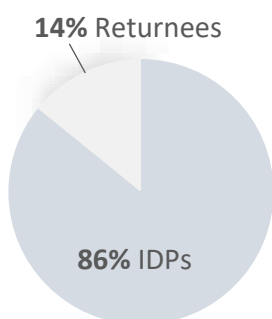
Departures were recorded in Askira/Uba LGA of Borno, and Demsa, Fufore, Gombi, Hong, Madagali, Maiha, Michika, Mubi North, Mubi South, Song, and Yola North LGAs of Adamawa.

ETT assessments identified the following movement triggers: voluntary relocation (888 individuals or 41%), poor living conditions (653 individuals or 30%), improved security (383 individuals or 17%), fear of attack (126 individuals or 6%), flood (73 individuals or 3%), seasonal farming (42 individuals or 2%), and military operations (15 individuals or 1%).

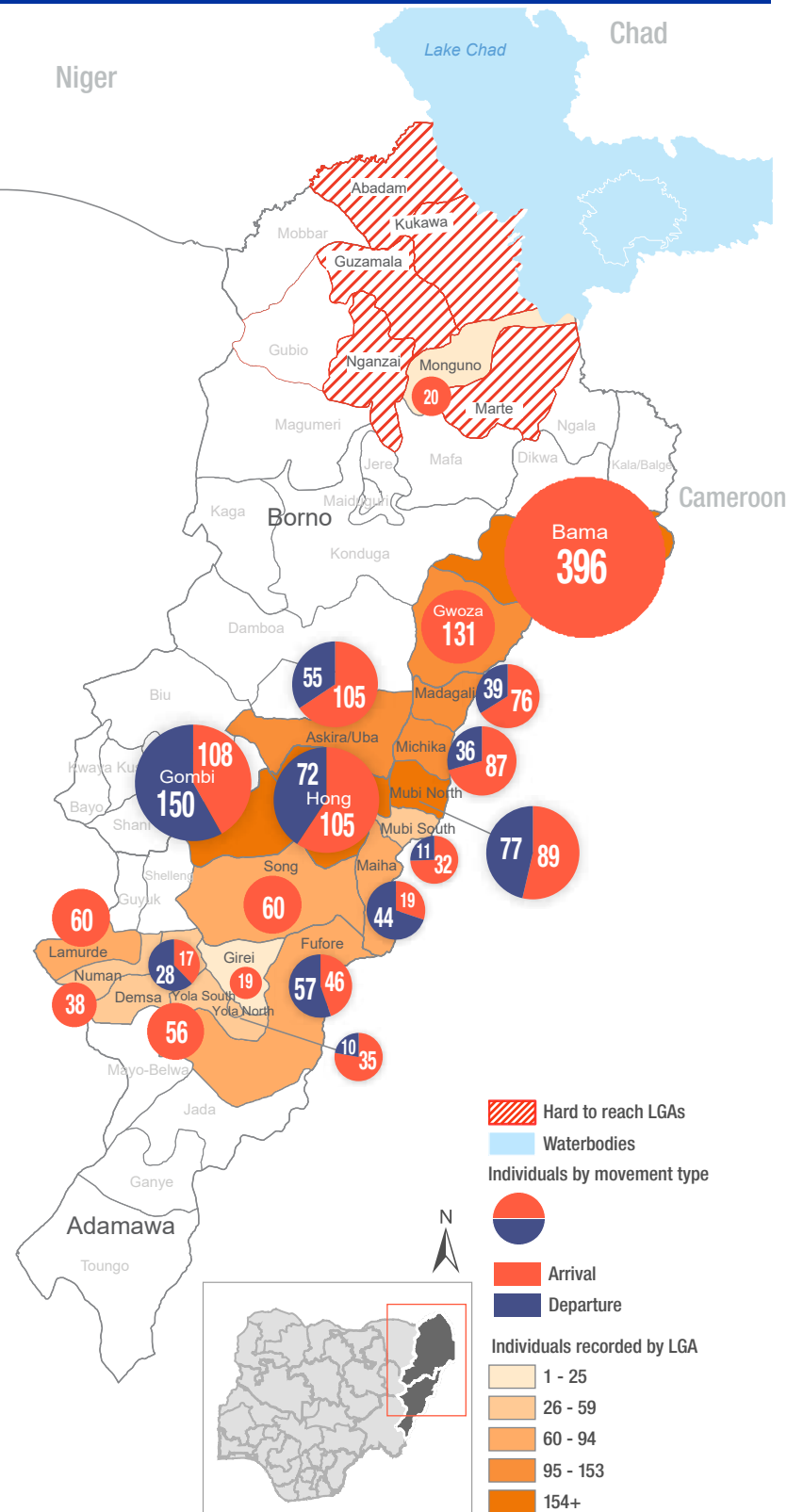
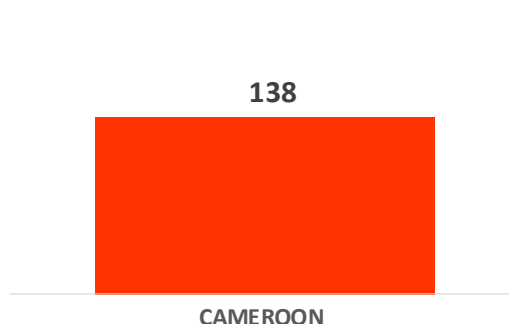
### PERCENTAGE OF INDIVIDUALS BY MOVEMENT TRIGGER



### Affected population



### Arrivals from neighbouring countries



\* Movements in Kala/Balge were captured by ETT outreach staff in the LGA

### SUMMARY OF MAJOR MOVEMENTS

**Bama:** 396 arrivals were recorded in Bama LGA of Borno State. The arrivals included 268 individuals from within Bama LGA, in Borno State and 128 individuals from Marwa region in Cameroon. Sixty-eight per cent of the movements were due to poor living conditions, and 32 per cent were due to voluntary relocation.

**Gombi:** 108 arrivals and 150 departures were recorded in Gombi LGA of Adamawa State. The arrivals included 63 individuals from Song LGA in Adamawa State and 45 individuals from Mubi North LGA in Adamawa State. The departures included 86 individuals to Hong LGA in Adamawa State, 28 individuals to Girei LGA in Adamawa State, 26 individuals to Mubi North LGA in Adamawa State, and 10 individuals to Yola North LGA in Adamawa State. Thirty-three per cent of the movements recorded were a result of the improved security situation in areas of origin, 31 per cent of the movements were due to voluntary relocation, 24 per cent of the movements recorded were due to fear of attack, and 11 per cent were due to poor living conditions.

**Hong:** 105 arrivals and 72 departures were recorded in Hong LGA of Adamawa State. The arrivals included 86 individuals from Gombi LGA in Adamawa State and 19 individuals from Askira/Uba LGA in Borno State. The departures included 44 individuals within Hong LGA in Adamawa State, and 28 individuals to Song LGA in Adamawa State. Forty-nine per cent of the movements recorded were a result of the improved security situation in areas of origin, 25 per cent of the movements recorded were a result of the impact of flooding in areas of origin, 16 per cent of the movements were due to poor living conditions, and 11 per cent were due to voluntary relocation.

**Mubi North:** 89 arrivals and 77 departures were recorded in Mubi North LGA of Adamawa State. The arrivals included 35 individuals from Madagali LGA in Adamawa State, 28 individuals from Michika LGA in Adamawa State, and 26 individuals from Gombi LGA in Adamawa State. The departures included 45 individuals to Gombi LGA in Adamawa State, and 32 individuals to Song LGA in Adamawa State. Seventy-nine per cent of the movements were due to voluntary relocation, and 21 per cent of the movements were due to poor living conditions.

## NEW ARRIVAL MALNUTRITION SCREENING SUMMARY (CHILDREN 6-59 MONTHS)

An exhaustive nutrition screening using mid-upper arm circumference (MUAC) and oedema for acute malnutrition was conducted by sector partners for 116 children of 6-59 months. Of the 116 children screened, the MUAC reading indicated that 12 children were recorded in the red category, 11 children in the yellow category and 93 children in the green category. No case of oedema was reported in the 3 LGAs assessed.

The results also included 33 children who arrived from neighbouring countries (all in Bama). Of all the 33 children measured, 2 were recorded in the red category, 3 in the yellow category and 28 were in the green category. All children found with acute malnutrition have been admitted for treatment. Please note, the data presented are not surveillance results and should be interpreted with caution.

LGA	MUAC Categories						Total
	Green (>12.5cm)		Yellow (11.5cm - 12.5cm)		Red (<11.5cm)		
	Inaccessible	Accessible	Inaccessible	Accessible	Inaccessible	Accessible	
Bama	24	54	3	7	6	5	99
Gwoza	7	6	1	0	1	0	15
Monguno	2	0	0	0	0	0	2
<b>Total</b>	<b>33</b>	<b>60</b>	<b>4</b>	<b>7</b>	<b>7</b>	<b>5</b>	<b>116</b>

■ Nourished     
 ■ Moderate Acute Malnutrition (MAM)     
 ■ Severe Acute Malnutrition (SAM)

*Please note, the data presented are not surveillance results and should be interpreted with caution.*

**Table 1. Details of movements by locations of assessment and locations of arrival / departure - only movements with at least 22 persons are listed below**

Tracking location			Movement location			ARRIVAL	DEPARTURE	GRAND TOTAL	
STATE	LGA	WARD	STATE	LGA	WARD				
ADAMAWA	GIREI	DAMARE	ADAMAWA	SONG	SONG GARI	25	-	25	
		GIREI I		LAMURDE	LAMURDE	28	-	28	
		GIREI II		FUFORE	FARANG	22	-	22	
	GOMBI	GARKIDA	BORNO	DAMBOA	BEGO/YERWA/NGURNA	26	-	26	
		GOMBI NORTH	ADAMAWA	SHELLENG	KIRI	34	-	34	
		GOMBI SOUTH	BORNO	GWOZA	GWOZA WAKANE/BULABULIN	31	-	31	
	HONG	BANGSHIKA	ADAMAWA	HONG	THILBANG	27	-	27	
		GAHARA		MUBI NORTH	VIMTIM	91	-	91	
		GAYA		BORNO	ASKIRA UBA	HUSARA/TAMPUL	31	-	31
		UBA		-	-	153	-	153	
	LAMURDE	LAFIYA	ADAMAWA	GUYUK	BANJIRAM	32	-	32	
		OPALO	ADAMAWA	NUMAN	SABON PAGI	-	24	24	
	MADAGALI	DUHU/SHUWA	ADAMAWA	MADAGALI	DUHU/SHUWA	-	140	140	
		GULAK		MUBI NORTH	KOLERE	-	33	33	
		KIRCHINGA/WURO NGAYANDI		MUBI SOUTH	KOLERE	-	27	27	
		PALLAM		GIREI	JERA BONYO	-	31	31	
	MAIHA	SORAU A	TARABA	LAU	MAYO LOPE	-	24	24	
	MICHIKA	GARTA/GHUNCHI	ADAMAWA	MICHIKA	THUKUDOU/SUFUKU/ZAH	22	-	22	
		MINKISI WURO NGIKI	ADAMAWA	SONG	SONG WAJE	30	-	30	
	MUBI NORTH	KOLERE	ADAMAWA	MADAGALI	KRICHINGA/WURONGAYANDI	27	-	27	
LOKUWA		ADAMAWA	MADAGALI	GULAK	33	-	33		
MUBI SOUTH	NASARAWO	BORNO	GWOZA	PULKA BOKKO	27	-	27		
NUMAN	SABON PEGI	ADAMAWA	NUMAN	SABON PEGI	33	-	33		
SONG	SONG GARI	ADAMAWA	GIREI	DAMARE	-	25	25		
BORNO	ASKIRA/UBA	HUSARA/TAMPUL	ADAMAWA	HONG	UBA	152	-	152	
		UBA	BORNO	ASKIRA UBA	UBA	221	-	221	
		ZADAWA/HAUSARI	ADAMAWA	HONG	GARAHA	-	63	63	
	BAMA	BUDUWA/BULA CHIRABE	ADAMAWA	MUBI NORTH	KOLERE	25	-	25	
			ADAMAWA	MUBI SOUTH	MUGULBU/YADAFI	71	-	71	
		CAMEROON	MARWA	MORA	89	-	89		
		BORNO	BAMA	SABSABWA/SOYE/BULONGU	125	-	125		
		BORNO	SHEHURI/HAUSARI/MAIRI	BORNO	LAWANTI/MALAM/MASTARI/ABBARAM	75	-	75	
	GWOZA	PULKA BOKKO	BORNO	KONDUGA	KAWURI	53	-	53	
			CAMEROON	MARWA	MORA	37	-	37	

The depiction and use of boundaries, geographic names, and related data shown on maps and included in this report are not warranted to be error free nor do they imply judgment on the legal status of any territory, or any endorsement or acceptance of such boundaries by IOM.

When quoting, paraphrasing or in anyway using the information mentioned in this report, the source needs to be stated appropriately as follows: "Source: International Organization for Migration [month, year], Displacement Tracking Matrix (DTM)".

\* MUAC data is provided by UNICEF

For more information or to report an alert, please contact:  
 DTM Nigeria: iomnigeria@iom.int | +234 903 8852 524    <https://displacement.iom.int/nigeria> ; <https://dtm.iom.int/nigeria>

