

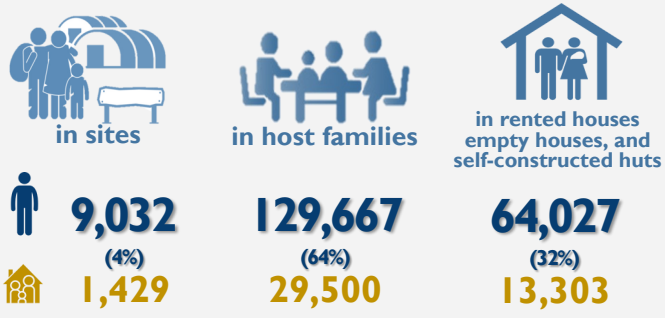


©IOM Burundi - DTM Reference Map (June 2017)

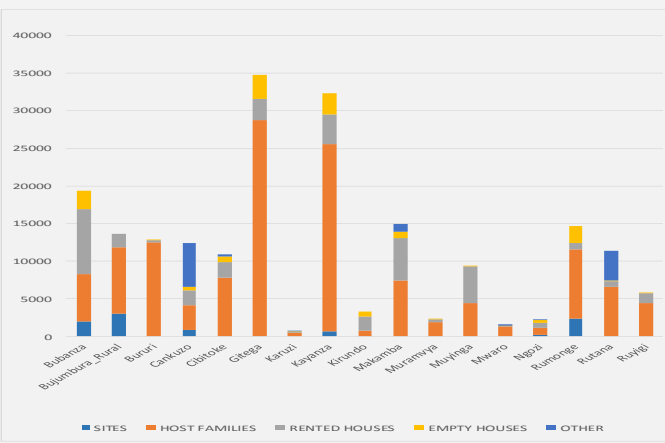
202,726 IDPs

June 2017

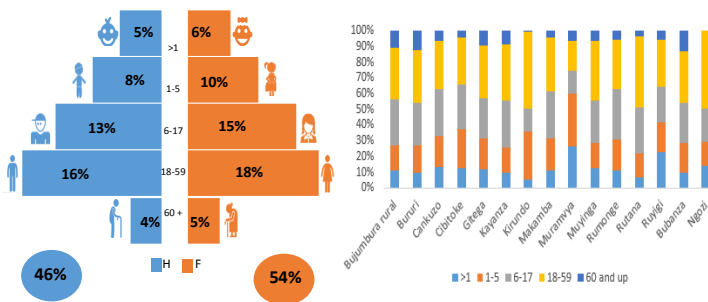
44,232 Households



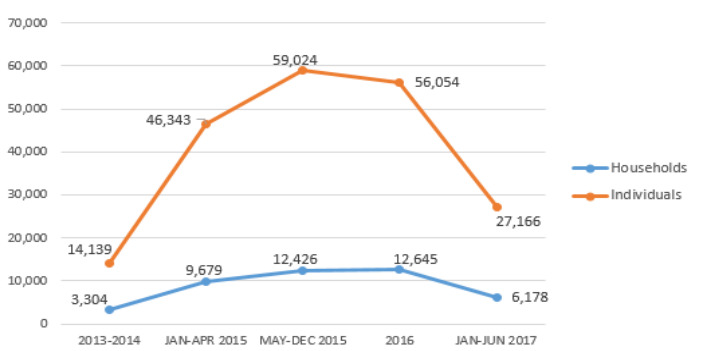
Displacement Locations



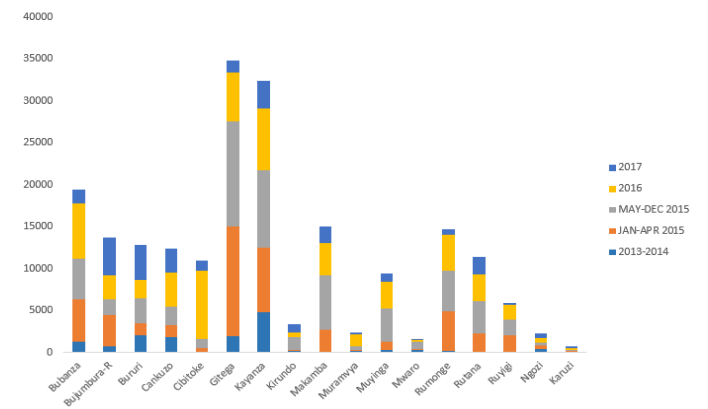
Gender and Age Disaggregation



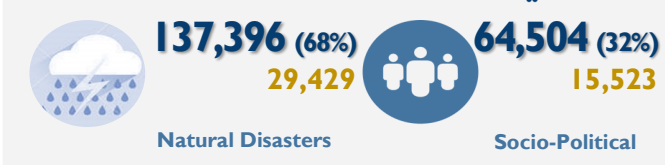
Displacement Periods



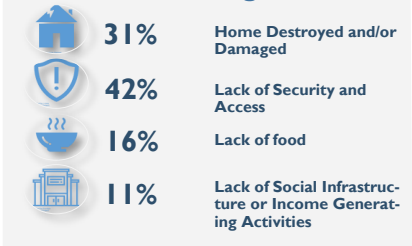
Displacement Periods by province



Reasons for Displacement



Reasons Preventing Return



Expectations



Information is gathered from 17 provinces through two separate processes

