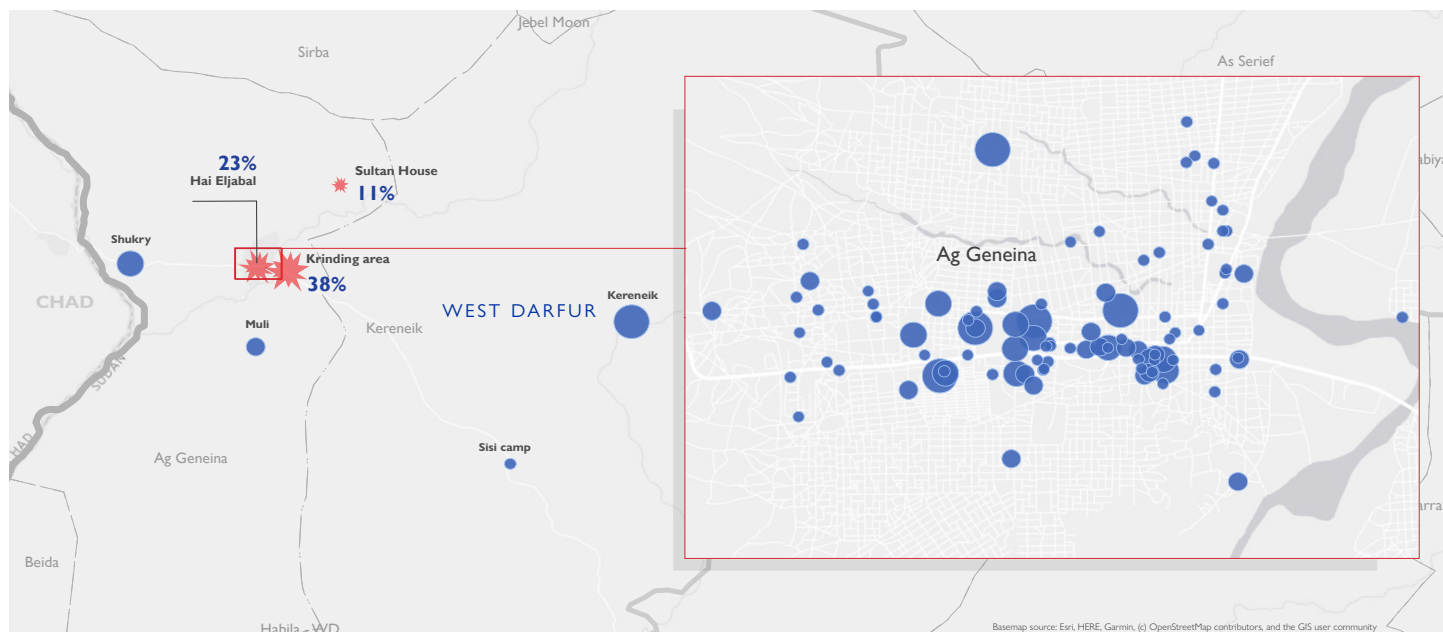
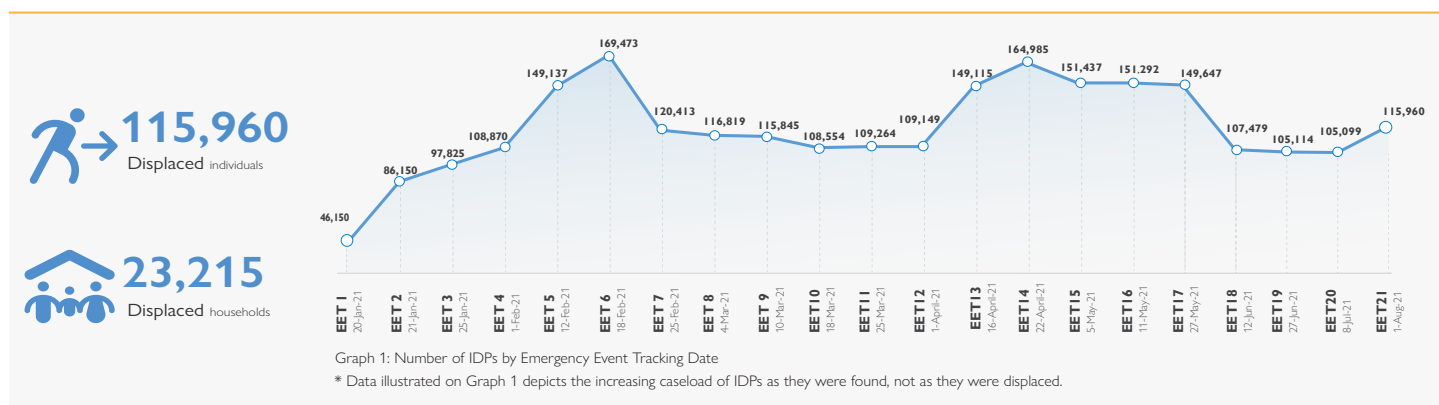




The DTM Emergency Event Tracking (EET) is deployed to track sudden displacement and population movements, provide more frequent updates on the scale of displacement, and quantify the affected population when needed. As a subcomponent of the new Mobility Tracking methodology in Sudan ([Round One](#)), and activated on a need basis, EET utilises a broad network of key informants to capture best estimates of the affected population presence per location – a useful tool for humanitarian response planning and design.



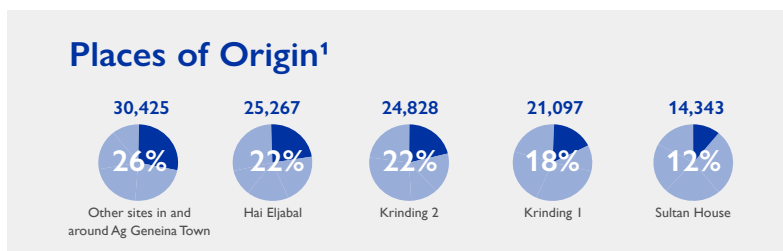
Event Overview



DTM teams activated EET to monitor the displacement of individuals affected by inter-communal conflict between Masalit and Arab tribes. Clashes initially erupted on 16 January 2021 in the Krinding area of Ag Geneina town, West Darfur. From 3rd April 2021, inter-communal conflict has escalated in the Hai Eljabal area of Ag Geneina town, West Darfur, resulting in additional displacement. For more information, please see [EET_Ag Geneina, West Darfur_020](#).

The twenty-first update estimates that a total number of 115,960 individuals (23,215 households) are displaced in Ag Geneina and its surrounding villages. The majority of the IDP caseload are currently seeking shelter in Ag Geneina (91%), with the remainder staying in the surrounding villages of Kereneik (6%), Shukry (2%), and Muli (1%). On 14 July 2021, IOM participated in a joint re-verification exercise alongside the Humanitarian Aid Commission, UNHCR, WFP, OCHA, WFP, WR, WCC, and IAS).

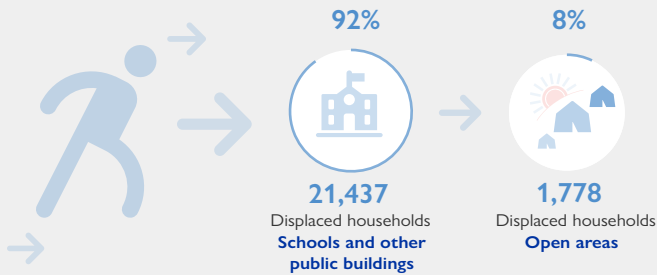
DTM teams also recaptured (upon further verification) 298 individuals killed and 555 having sustained injuries, whilst at least 11,393 individuals have lost personal belongings and livestock throughout the conflict. Consistent with the twentieth update, based on a ranking scale, the three main priority needs for the displaced caseload are WASH (water, sanitation, and hygiene), food and emergency shelter.



¹Where possible, the Krinding area has been further disaggregated into the respective villages of Droti, Um Down and Darelnaeem, as well as Krinding 1 and Krinding 2 IDP camps (reflected in EET 008 to 021 datasets).



Shelter Indicator



Priority Needs (Ranking scale)

- 1 **WASH** (Water, Sanitation and Hygiene)
- 2 **FOOD**
- 3 **EMERGENCY SHELTER**
- 4 **NFI** **NON-FOOD ITEMS**

Through its shelter indicator, DTM identified 21,437 IDP households (92%) sheltering in schools and other public buildings. The remaining caseload of 1,778 IDP households (8%) are gathering in open areas or informal settlements.

Of the 115,960 IDPs located in Ag Geneina town and its surrounding villages, 60,708 (52%) are female and 55,252 (48%) are male. Further disaggregation by age indicates 18 to 59 as the predominant age category (16% female, 15% male), followed by ages 6 to 17 (15% female, 14% male), 0 to five (15% female, 14% male), and 60 and over (6% female, 5% male).

At least 14,509 cases of additional vulnerabilities in need of further support and assistance were identified through DTM's protection indicator. Lactating and pregnant made up 25 and 16 per cent respectively, followed by malnourished individuals (17%), female-headed households (13%), child-headed households (6%), elders providing care to their households (6%), single parents (5%), unaccompanied elders (4%), physically disabled (2%), mental illnesses (2%), chronic illnesses (1%), and unaccompanied minors (1%).

Based on a ranking scale, the three main priority needs for the displaced caseload in Ag Geneina are WASH (water, sanitation, and hygiene), food and emergency shelter.

Data on return intention, demographics, protection indicators and priority needs are subject to further verification through registration activities. Displacement figures collected through this activity are further refined with each data collection round to reduce any discrepancies that may result from the miscorrelation of the EET methodology and that of DTM registration activities linked to direct humanitarian assistance.



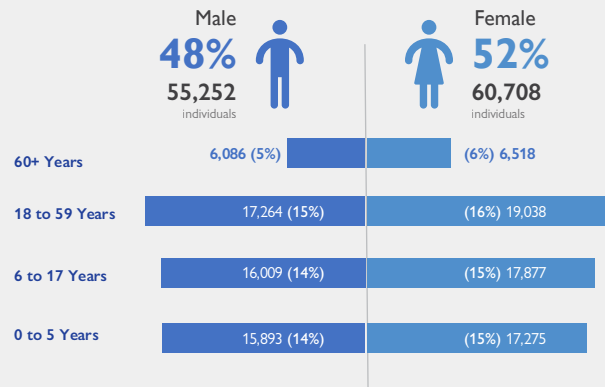
Return Intention

Data collected through the return intention indicator suggests that all IDPs (100%) intend to return to their locations of origin upon improvement of the security situation.

Vulnerabilities



Demographics



IOM DISCLAIMER

The opinions expressed in the report are those of the authors and do not necessarily reflect the views of the International Organization for Migration (IOM). The designations employed and the presentation of material throughout the report do not imply the expression of any opinion whatsoever on the part of IOM concerning the legal status of any country, territory, city or area, or of its authorities, or concerning its frontiers or boundaries.

IOM is committed to the principle that humane and orderly migration benefits migrants and society. As an intergovernmental organization, IOM acts with its partners in the international community to: assist in the meeting of operational challenges of migration; advance understanding of migration issues; encourage social and economic development through migration; and uphold the human dignity and well-being of migrants.