

EMERGENCY EVENT TRACKING

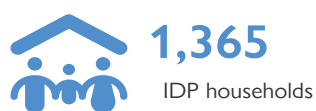
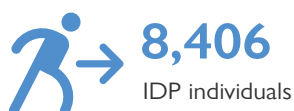
Data collection: 1st August 2021

CONFLICT



The DTM Emergency Event Tracking (EET) is deployed to track sudden displacement and population movements, provide more frequent updates on the scale of displacement, and quantify the affected population when needed. As a subcomponent of the new Mobility Tracking methodology in Sudan ([Round One](#)), and activated on a need basis, EET utilises a broad network of key informants to capture best estimates of the affected population presence per location – a useful tool for humanitarian response planning and design.

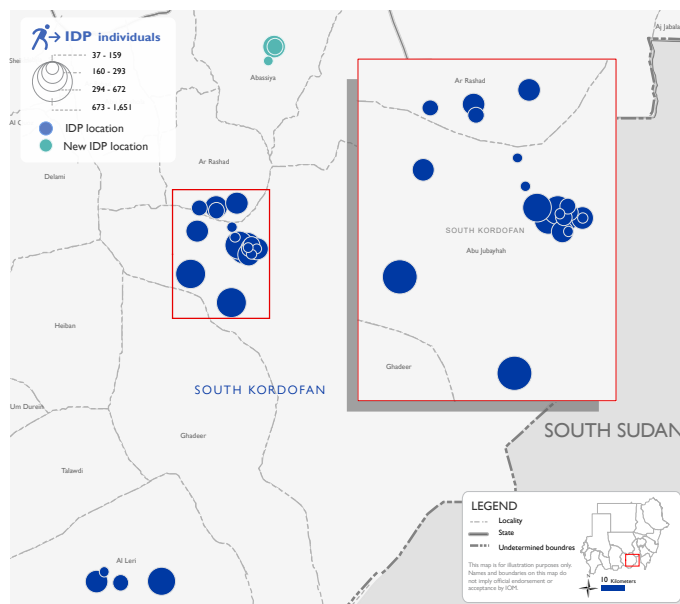
Event Overview



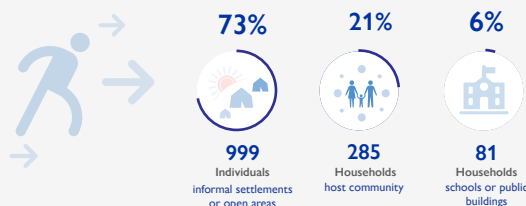
DTM teams activated EET to monitor the displacement of individuals affected by inter-communal violence across villages in Kalogi, South Kordofan over the issue of land ownership. Clashes erupted on 5th June 2021 involving the Kenana, Kawahla, and Hawazma (Dar Ali) tribes. For more information, please see [EET Kalogi, South Kordofan Update 002](#).

The update estimates a total number of 8,406 individuals (1,365 households) currently seeking shelter in Alrhmaniya (20%), Merefafain (15%), Debibet Juma (8%), Hai Um Naeem (6%), and Um Mawan (5%), other villages across the Abu Jubeiha locality (21%), as well as Al Leri (11%), Rashad, (10%), and Abassiya (4%) localities in South Kordofan. Field teams collected data from an additional three displacement sites since the last update.

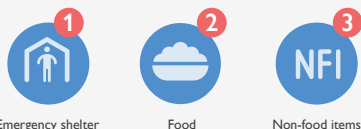
Field teams indicate that 32 individuals were killed, 12 individuals were injured, and 531 individuals report lost goods, cattle, and/or livestock. All displaced individuals are Sudanese nationals. DTM teams identified at least 1,197 cases of additional vulnerabilities in need of assistance and support. Based on a ranking scale, the three priority needs across the caseload are Emergency Shelter, Food, Non-Food Items.



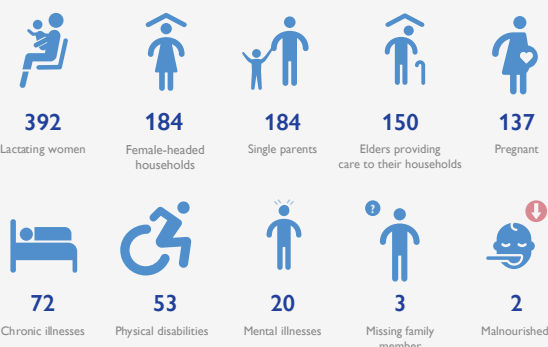
Shelter Indicator



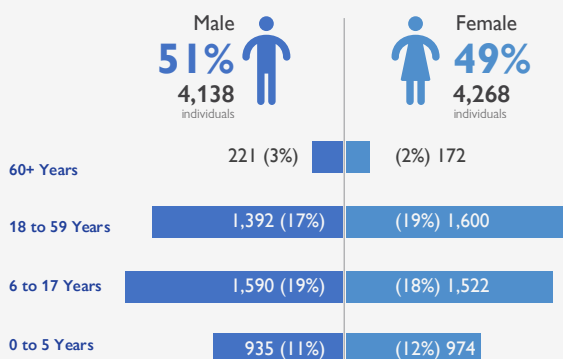
Priority Needs (Ranking scale)



Vulnerabilities



Demographics



Return Intention

Data collected through the return intention indicator suggests that 4,971 IDPs intend to remain in the same place (59%), 2,476 individuals intend to return upon improvement of the security situation (30%), and 959 IDPs (11%) have doubts on whether they would return if the security situation improve.

IOM DISCLAIMER

The opinions expressed in the report are those of the authors and do not necessarily reflect the views of the International Organization for Migration (IOM). The designations employed and the presentation of material throughout the report do not imply the expression of any opinion whatsoever on the part of IOM concerning the legal status of any country, territory, city or area, or of its authorities, or concerning its frontiers or boundaries.

IOM is committed to the principle that humane and orderly migration benefits migrants and society. As an intergovernmental organization, IOM acts with its partners in the international community to: assist in the meeting of operational challenges of migration; advance understanding of migration issues; encourage social and economic development through migration; and uphold the human dignity and well-being of migrants.