

The objective of the Emergency Tracking Tool (ETT) - Movement Alert is to collect information on large and sudden population movements, and to provide support to the Government and the humanitarian community by disseminating data on IDPs for informing effective humanitarian response to the affected population. Information is collected through key informant interviews or direct observation. The dashboard provides basic information on displacements recorded in Mueda district from 26th to 27th July. This ETT Movement Alert forms part of a larger exercise in mapping displacement trends on a weekly basis. Reported findings complement information obtained through other DTM data collection activities in the country. Additional information is available upon request.

## MOVEMENT ALERT

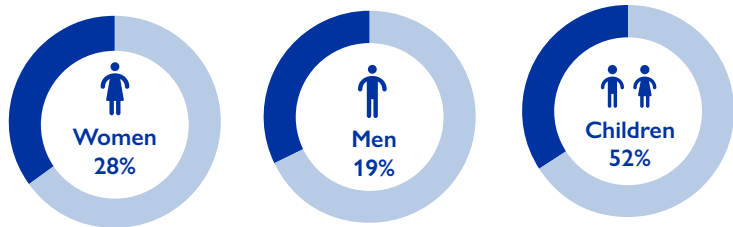
### SUMMARY OF THE EVENT

Following the recent attacks in Palma and Nangade districts, the DTM team in Mueda reported a large increase of 1,498 individuals arriving between the 26th and 27th July. New arrivals were recorded in Mueda sede (863 individuals), Negomano (199 individuals) and N'Gapa (436 individuals). Displaced families are mainly coming from Palma (Olumbe and Quitunda), Muidumbe (Namande), Mocimboa da Praia (Panjele) and from Nangade (Mandimba).

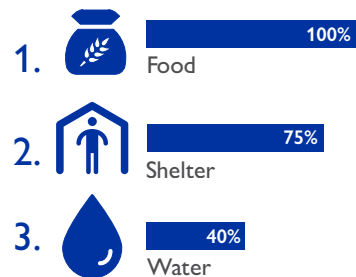
### KEY INFORMATION

- ASSESSMENT LOCATION: Mueda
- DATE OF MOVEMENT: 26th to 27th July
- LOCATION TYPE: Host community / Resettlement site
- REASON FOR MOVEMENT: Palma and Nangade attacks
- MEANS OF TRAVEL: Bus/Foot
- AVAILABLE ASSISTANCE: None

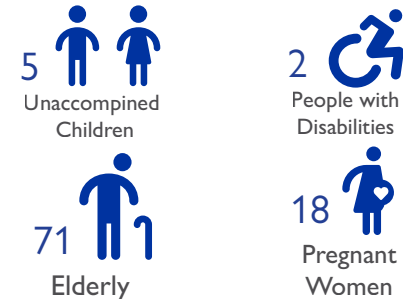
### DEMOGRAPHICS



### MAIN REPORTED NEEDS



### VULNERABILITIES



→ 1,498 individuals

