

EMERGENCY EVENT TRACKING

Data collection: 25 February to 12 July 2021

CONFLICT



The DTM Emergency Event Tracking (EET) is deployed to track sudden displacement and population movements, provide more frequent updates on the scale of displacement, and quantify the affected population when needed. As a subcomponent of the new Mobility Tracking methodology in Sudan ([Round One](#)), and activated on a need basis, EET utilises a broad network of key informants to capture best estimates of the affected population presence per location – a useful tool for humanitarian response planning and design.

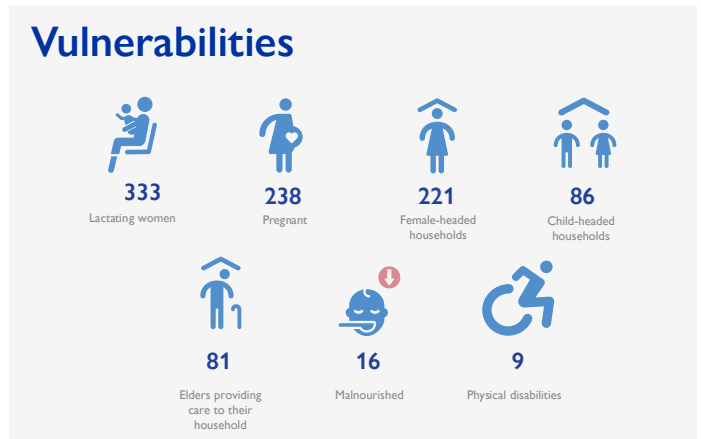
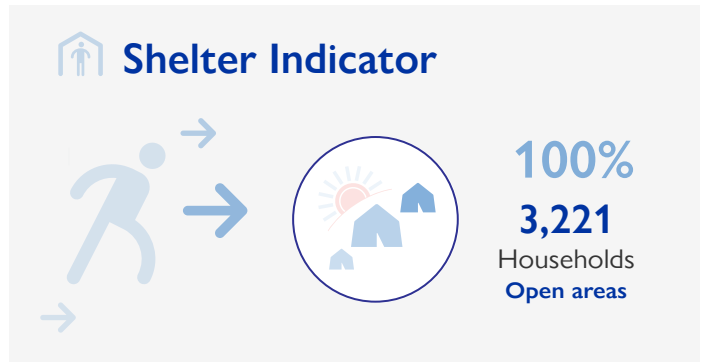
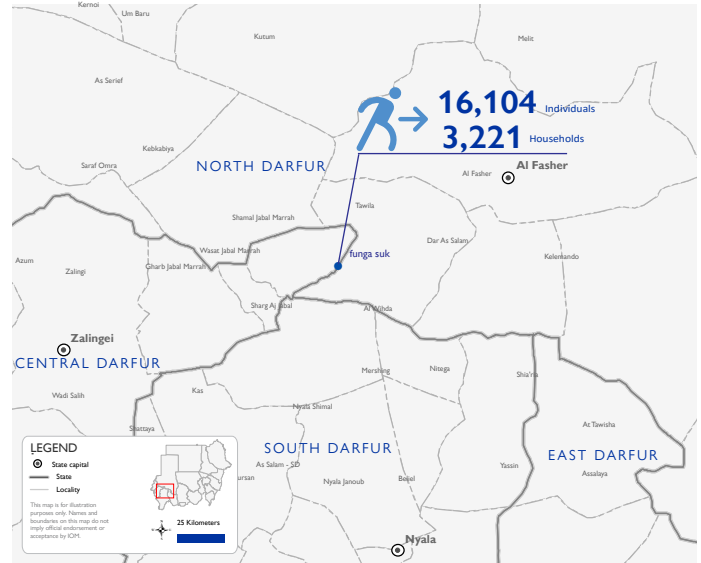
Event Overview



DTM teams activated EET to monitor the displacement of individuals affected by violence between factions of the Sudan Liberation Army (SLA/WA) in Shamal Jabal Marrah, Central Darfur. Clashes erupted on 12 May 2021 in Fanga Suk due to tensions over land accessibility. For more information, please see the first EET, Emergency Tracking Report [Shamal Jabal Marrah, Central Darfur 002](#).

The third EET update estimates a total number 16,104 individuals (3,221 households) seeking shelter in open areas of Fanga. The IDP caseload was displaced from Ahmed Nile (25%), Olow (9%), Kola (9%), Sado (9%), Songari East (8%), Tebro (8%), Daba Nairah (8%), Ahmed Hussein (7%), Fouri (7%), Songari West (7%), and Ali Kasa (4%) villages in Shamal Jabal Marrah Central Darfur.

All displaced individuals are Sudanese nationals. DTM teams identified at least 984 cases of additional vulnerabilities in need of assistance and support. Based on a ranking scale, the three priority needs across the caseload are Non-Food Items, Food, and Emergency Shelter.



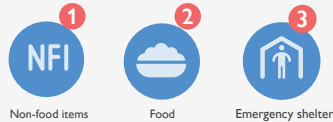
IOM DISCLAIMER

The opinions expressed in the report are those of the authors and do not necessarily reflect the views of the International Organization for Migration (IOM). The designations employed and the presentation of material throughout the report do not imply the expression of any opinion whatsoever on the part of IOM concerning the legal status of any country, territory, city or area, or of its authorities, or concerning its frontiers or boundaries.

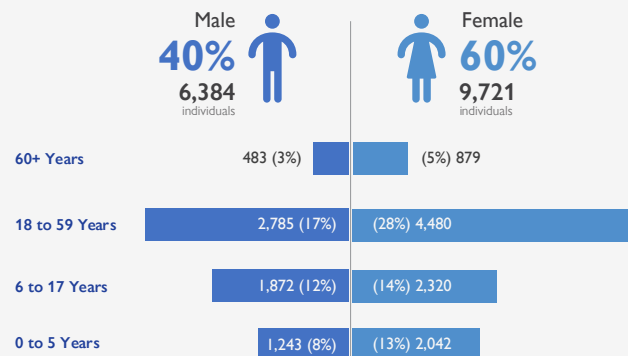
IOM is committed to the principle that humane and orderly migration benefits migrants and society. As an intergovernmental organization, IOM acts with its partners in the international community to: assist in the meeting of operational challenges of migration; advance understanding of migration issues; encourage social and economic development through migration; and uphold the human dignity and well-being of migrants.

Priority Needs

(Ranking scale)



Demographics



Return Intention

Data collected through the return intention indicator suggests that all 16,104 IDPs (100%) of individuals intend to return to their location of origin upon improvement of the security situation.