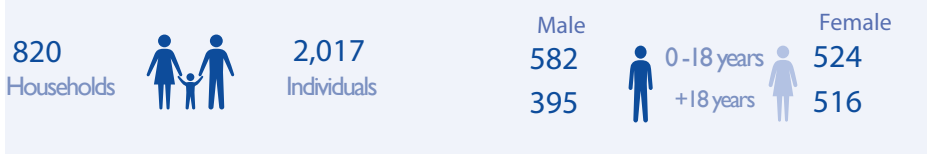




Bor IDP Camp Overview



The International Organization for Migration (IOM) Displacement Tracking Matrix (DTM) team in South Sudan maintains biometric registration database in Bor IDP Camp. During maintenance IOM carries out registration of new born babies, replacement of lost cards, merging of households that have requested to be included under one household and handling of referred protection cases from protection partners. In December 2020 the population of Bor IDP Site comprised a total of 2,017 individuals (820 households).

About 55 per cent of the registered population were found to be youths under the age of 18 years, while 52 per cent were female.

Population profile

 Male  Female

48% 52%

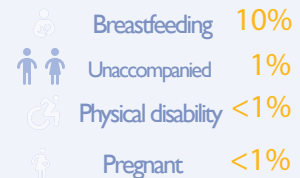
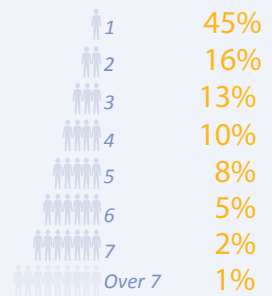
1% 60+ 1%

18% 18-59 24%

22% 5-17 21%

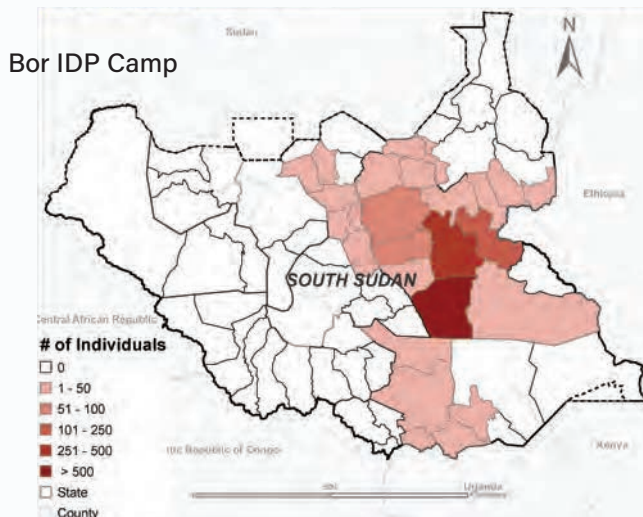
7% 0-4 6%

Household size



Percentage calculated based on the overall population

Number of individuals per County of habitual residence



Top four ranked
58% Bor South
13% Uror
7% Akobo
4% Duk

Most of the registered individuals in Bor IDP Camp arrived from locations within Bor South followed by those who arrived from Uror County. A minority arrived from other locations in South Sudan. The adjacent map represents the habitual residence for 1,662 out of 2,017 registered individuals.

For further information, contact DTM South Sudan at southsudandtm@iom.int

DTM IS SUPPORTED BY



The names and boundaries on the maps in this document do not imply official endorsement or acceptance by the Government of South Sudan or IOM. This document is for planning purposes only. IOM cannot guarantee that this document is error free and therefore will accept no liability for consequential and indirect damages arising from the use of this product.