

Households:
50



Individuals:
296



Casualties:
5



Movement Trigger:
Communal Clash

OVERVIEW

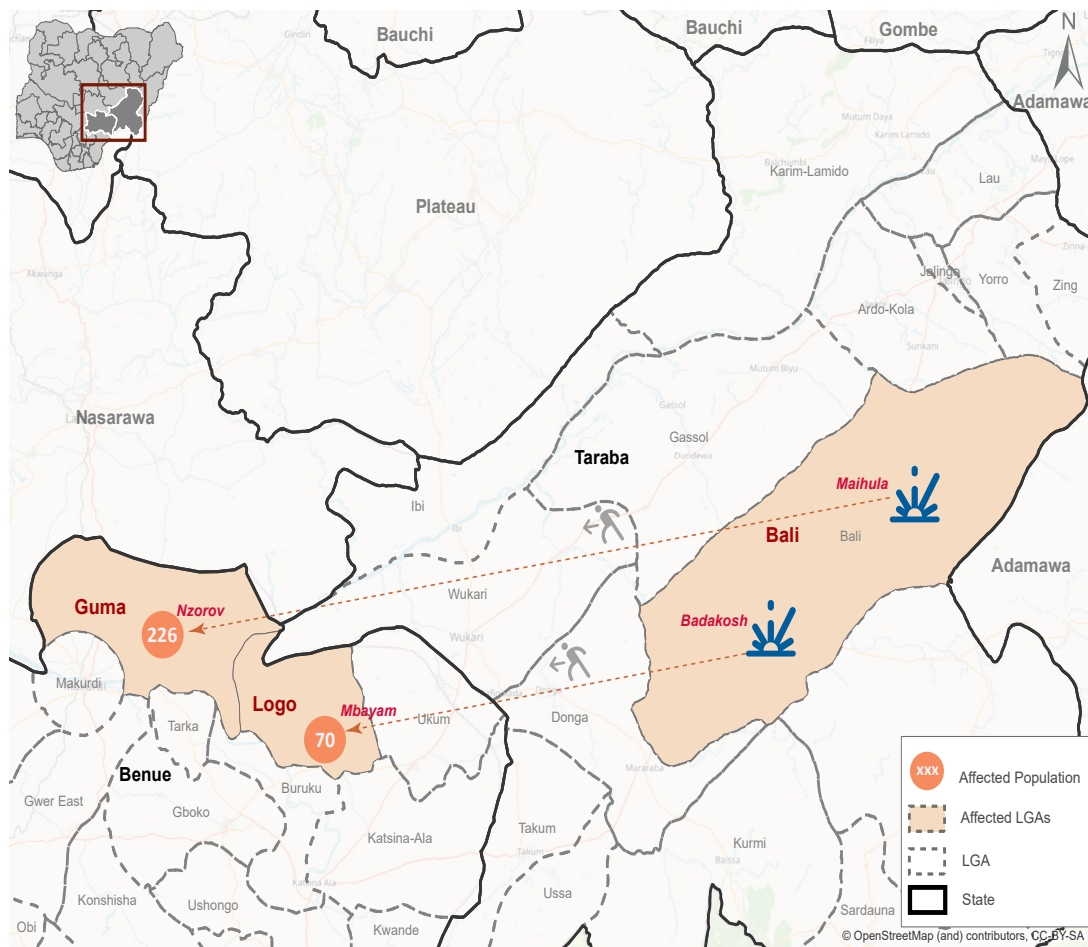
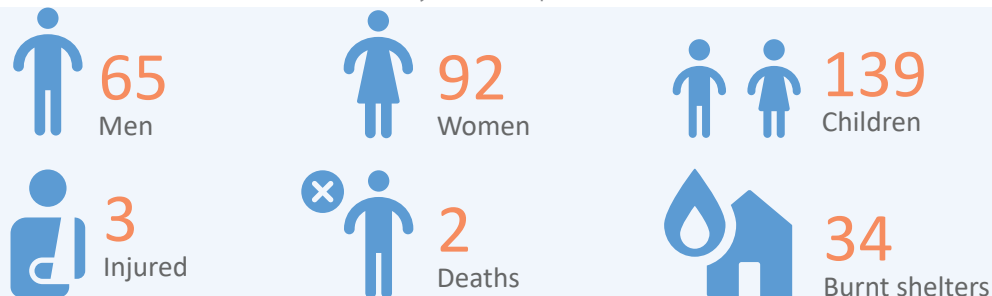
Surging communal violence between ethnic and religious groups, and long-standing conflicts between farming communities and nomadic herders are prevalent across north-east Nigeria. These conflicts are predominantly centered on disputes over land and cause great insecurity and widespread displacement across the region.

The clashes between neighbouring Tiv and Fulani communities in Bali LGA in Taraba state on 13 May 2021 continue to induce displacement towards the neighbouring state and LGAs because they fear more attacks in the near future. Following these events, rapid assessments were conducted by DTM (Displacement Tracking Matrix) field staff with the purpose of informing the humanitarian community and government partners, and enable targeted response. Flash reports utilise direct observation and a broad network of key informants to gather representative data and collect information on the number, profile and immediate needs of affected populations.

Between 1 and 7 June 2021, the recorded displacements involved a total of 296 individuals. A total of 70 individuals left Badakosh ward of Bali LGA in Taraba State to Mbayam Ward of Logo LGA in Benue State and 226 individuals were displaced from Maihula Ward in Taraba state to Nzorov ward in Guma LGA in Benue State. A total of 5 casualties were recorded and 34 shelters were damaged. According to the rapid assessment, 39 per cent of IDPs mentioned shelter as their primary need, followed by food (reported by 32% of IDPs), WASH (reported by 21% of IDPs) and NFI (reported by 8% of IDPs).

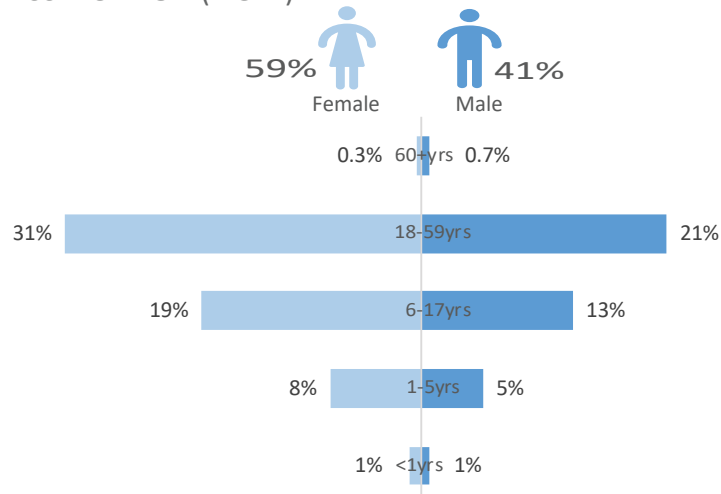


Displaced Persons from Bali LGA now in LEA Primary School Camp in Guma LGA ©IOM-DTM/2021

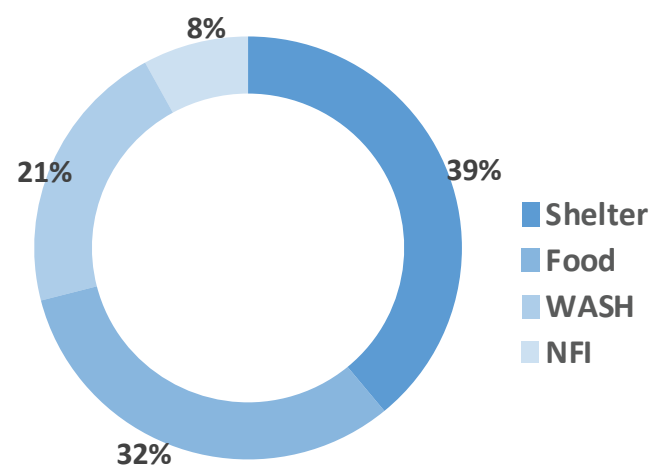


The map is for illustration purposes only. The depiction and use of boundaries, geographic names and related data shown are not warranted to be error free nor do they imply judgment on the legal status of any territory, or any endorsement or acceptance of such boundaries by IOM.

AGE CLASSIFICATION (FIG. 2)



MOST NEEDED ASSISTANCE (FIG. 2)



ARRIVAL LOCATION (TABLE 1)

From						To					
State	LGA	Ward	Household	Individuals	Gender	Arrival State	Arrival LGA	Arrival Ward	Arrival Site Name		
Taraba	Bali	Badakoshi	12	70	31 Male, 39 Female	Benue	Logo	Mbayam	LGEA.Pri.Sch.Ugba		
Taraba	Bali	Maihula	38	226	91 Male, 135 Female	Benue	Guma	Nzorov	LGS quarters		
Grand Total			50	296	122 Male, 174 Female						

"When quoting, paraphrasing, or in any other way using the information mentioned in this report, the source needs to be stated appropriately as follows: "Source: Displacement Tracking Matrix (DTM) of the International Organization for Migration (IOM), June 2021.""