

EMERGENCY EVENT TRACKING

Data collection: 8 June 2021

CONFLICT



The DTM Emergency Event Tracking (EET) is deployed to track sudden displacement and population movements, provide more frequent updates on the scale of displacement, and quantify the affected population when needed. As a subcomponent of the new Mobility Tracking methodology in Sudan (Round One), and activated on a need basis, EET utilises a broad network of key informants to capture best estimates of the affected population presence per location – a useful tool for humanitarian response planning and design

Event Overview

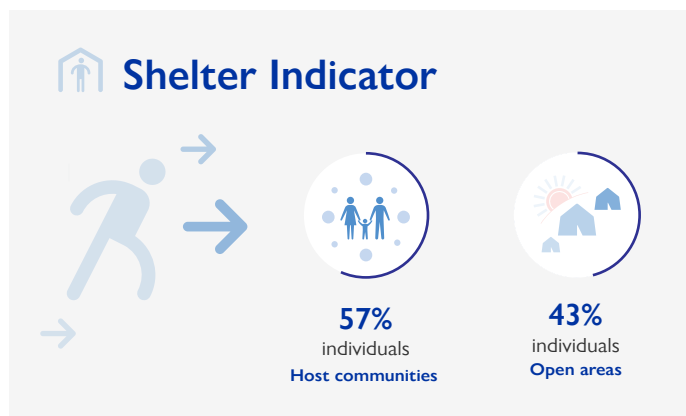
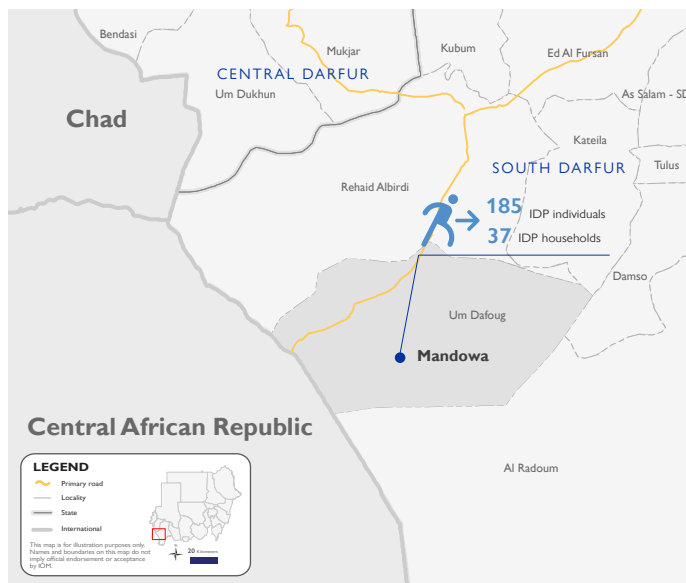


185
IDP individuals



37
IDP households

DTM teams activated EET to monitor the displacement of individuals affected by inter-communal conflict between Falata and Taesha tribes on 6 June 2021 in Mandowa village, Um Dafoug, South Darfur. The first EET update estimates a total number of 185 individuals (37 households) seeking shelter with the host community (57%) and in open areas (43%) of securer areas of Mandowa village. All displaced individuals are Sudanese nationals. Field reports indicate 34 individuals were killed and 21 injured. At least 24 displaced individuals are reported to have additional vulnerabilities in need of assistance and support, and 20 individuals report lost goods, cattle or livestock. Based on a ranking scale, the three priority needs across the caseload are non-food items, emergency shelter and food.



IOM DISCLAIMER

The opinions expressed in the report are those of the authors and do not necessarily reflect the views of the International Organization for Migration (IOM). The designations employed and the presentation of material throughout the report do not imply the expression of any opinion whatsoever on the part of IOM concerning the legal status of any country, territory, city or area, or of its authorities, or concerning its frontiers or boundaries.

IOM is committed to the principle that humane and orderly migration benefits migrants and society. As an intergovernmental organization, IOM acts with its partners in the international community to: assist in the meeting of operational challenges of migration; advance understanding of migration issues; encourage social and economic development through migration; and uphold the human dignity and well-being of migrants.

Priority Needs

(Ranking scale)



Demographics



Age Group	Male	Female
60+ Years	5 (3%)	(4%) 8
18 to 59 Years	26 (14%)	(20%) 37
6 to 17 Years	28 (15%)	(18%) 34
0 to 5 Years	21 (11%)	(15%) 26



Return Intention

Data collected through the return intention indicator suggests that all IDPs in Mandowa village (100%) intend to return to their locations of origin upon improvement of the security situation.