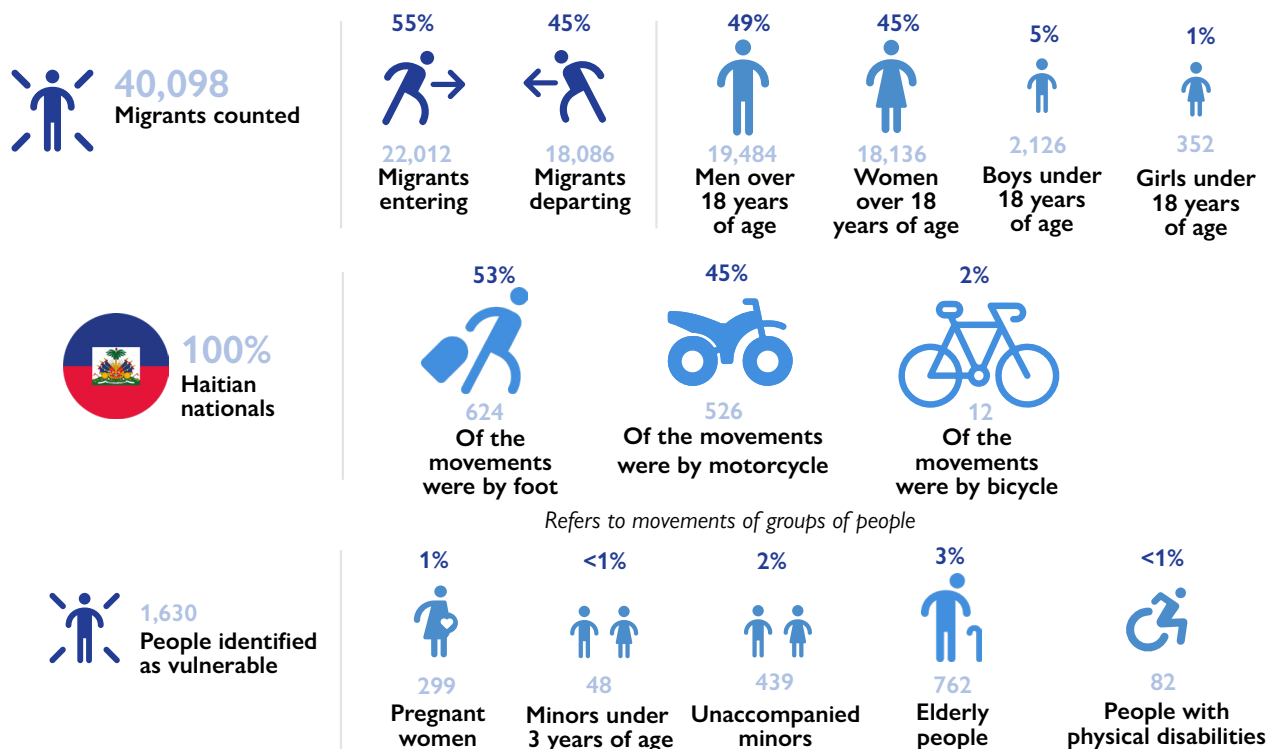
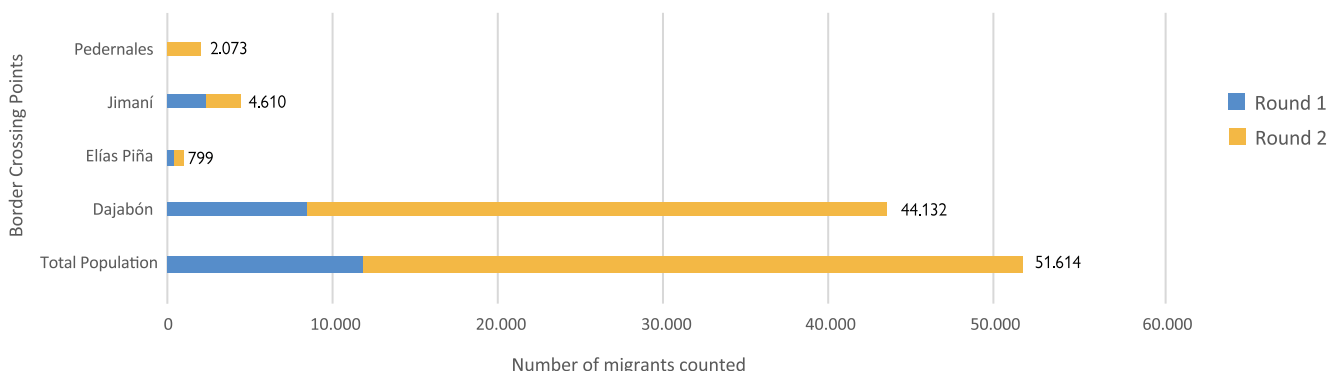


HIGHLIGHTS



Number of migrants counted by border crossing point from April 20 to May 21



SITUATIONAL CONTEXT

The cross-border movement of Haitian nationals is recurrent, and this movement is represented by border inhabitants in Haitian towns. Part of these movements are irregular even though official entry points are used. This is so because there are territorial roots and the type of movement is temporary, also in the General Migration Law 285-04 there is a migratory category of border inhabitant, although this has not yet been implemented.

However, given this inconsistency, Haitians migrating under these circumstances represent an irregular migrant population in the Dominican territory, which puts them in a vulnerable condition and a propensity to non-voluntary returns. Historically, the border between the Dominican Republic and Haiti has been characterized by a cross-border commercial dynamic, due to the exchange of different goods and the supply of markets with a greater flow towards Haiti. At the border level, border cities such as Dajabón, Jimaní and Elías Piña stand out, and the flows represented in this study correspond to those in days in which there is no exchange of goods, that is, when there is no active commercial dynamics.

METHODOLOGY

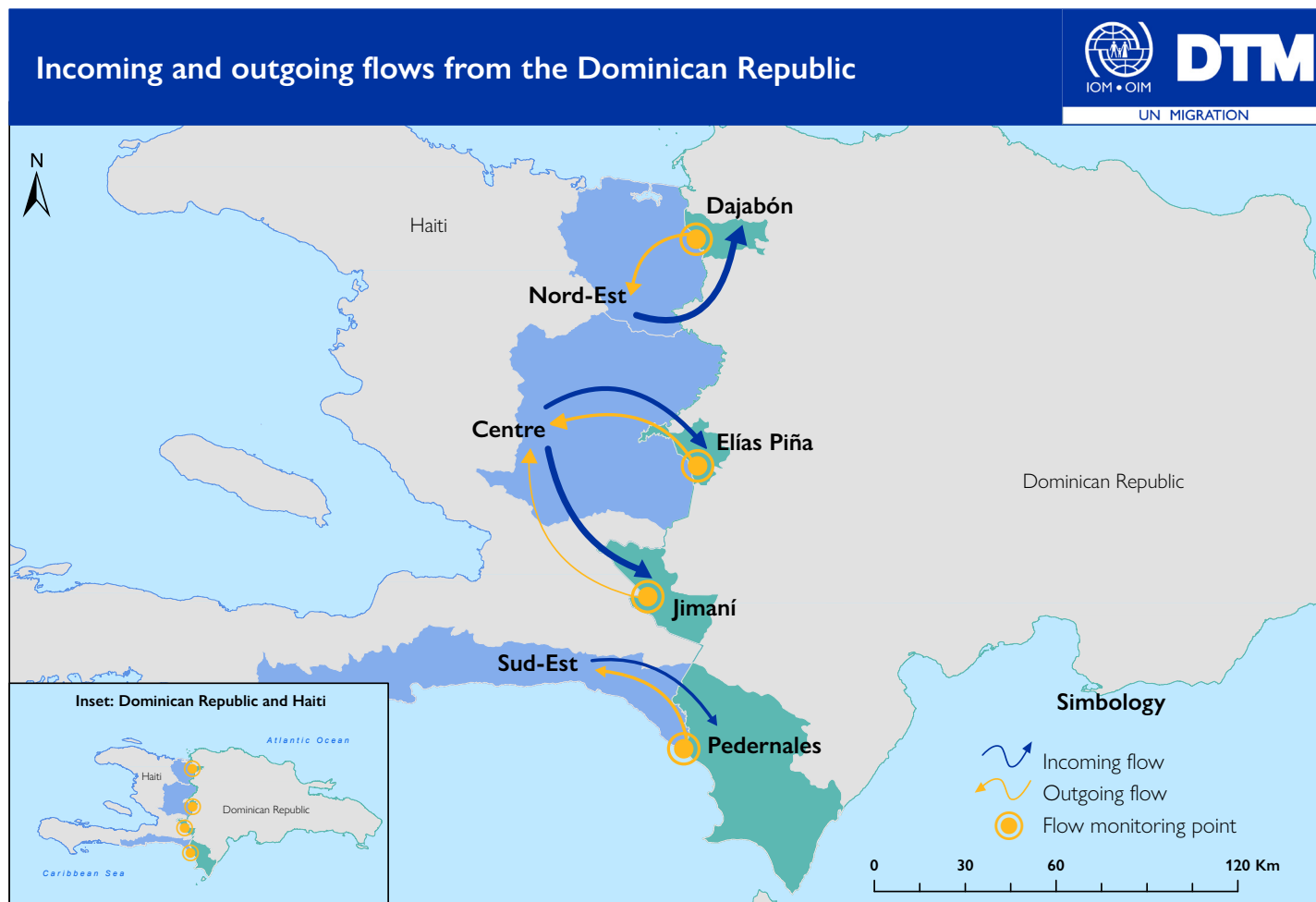
The data for this report were collected under the flow monitoring subcomponent of the Displacement Tracking Matrix (DTM) methodology, with the objective of generating a preliminary impression of the characteristics of migrants, migration dynamics and the mobility of migrants at three border crossings.

This study provides an analysis of the trends in the mobility of people, between May 8 and 21, 2021, in four specific border posts: Dajabón, Comendador de Elías Piña, Jimaní and Pedernales. Four data collectors participated, one for each point to carry out the monitoring and counting of people. Regarding the means of transport, it was counted by group movement. Data collection for Dajabón, Elías Piña and Pedernales was carried out on Tuesdays, Wednesdays and Thursdays from 8:00 am to 4:00 pm; in the case of Jimaní, counts were taken on Tuesdays, Wednesdays and Fridays at the same time. This corresponds to the ordinary flow when there are no market days, that is, when there is no active commercial activity.

INCOMING AND OUTGOING FLOWS

In general, four incoming flows into the Dominican Republic were identified: the first to Dajabón from Nord-Est in Haiti, two incoming flows from Centro to Elías Piña and Jimaní, and the last from Sud-Est to Pedernales.

Regarding outgoing flows, the same four were identified, but in a smaller scale. This is due to the limited observation hours and the daily return of people going through blind spots at the borders.

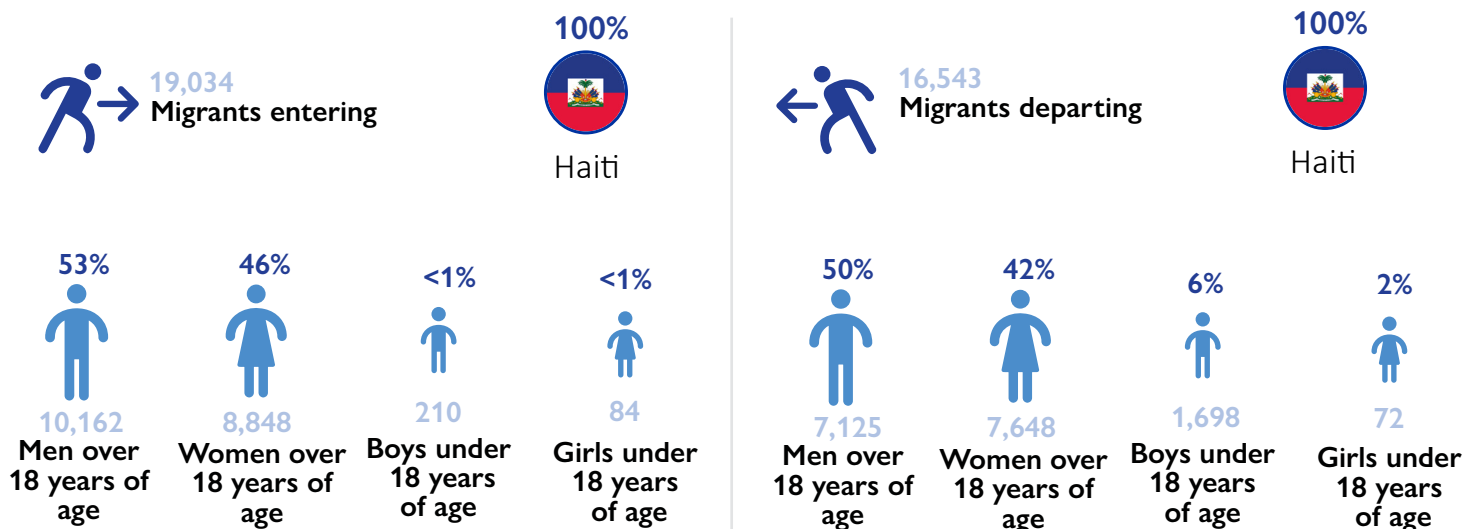


Basemap source: ESRI and UN World Map

This map is for illustration purposes only. The boundaries and names shown and the designations used on this map do not imply official endorsement or acceptance by the International Organization for Migration.

FLOW MONITORING REGISTRY AT THE DAJABÓN BORDER

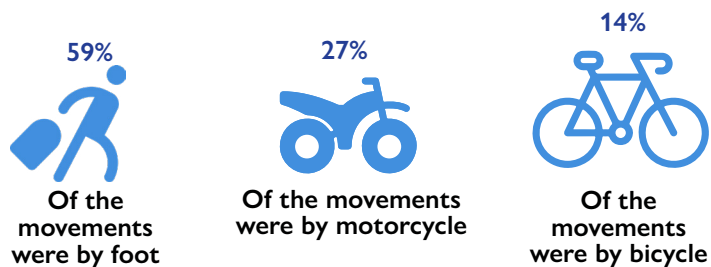
DEMOGRAPHIC PROFILE



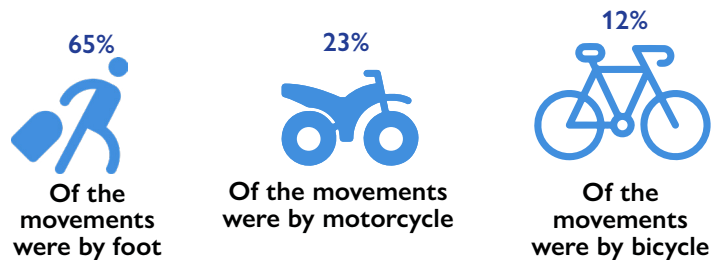
Dajabón is a municipality of the Dominican Republic located in the northwestern part of the country. During the flow monitoring at the border point with Ouanaminthe in Haiti, 19,304 people were identified entering Dajabón and 16,543 persons departing for Nord-Est in Haiti. This flow is a temporary transit of border inhabitants.

MEANS OF TRANSPORT

Migrants entering

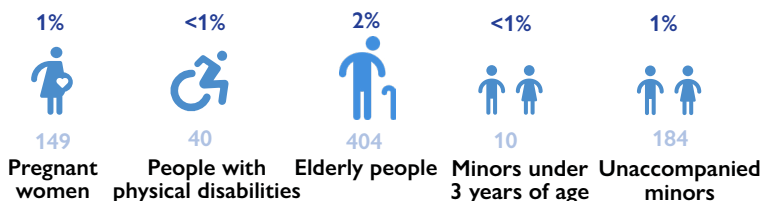


Migrants departing

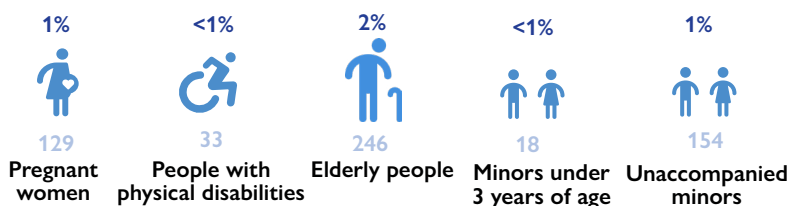


VULNERABLE POPULATIONS

Migrants entering

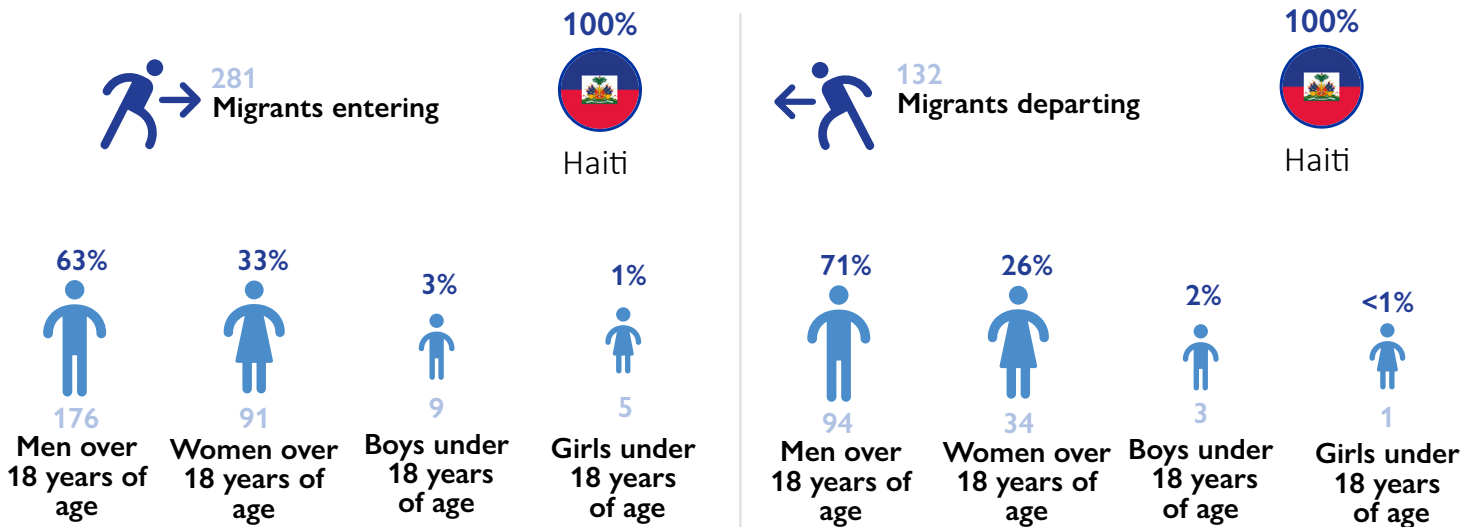


Migrants departing



FLOW MONITORING REGISTRY AT THE ELÍAS PIÑA BORDER

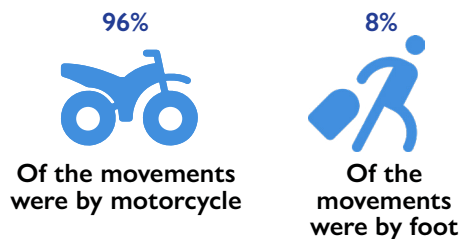
DEMOGRAPHIC PROFILE



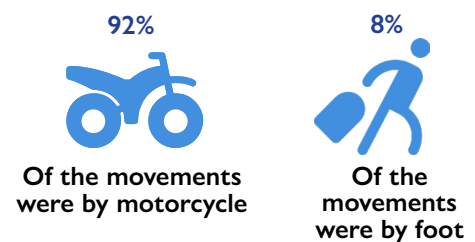
Elías Piña is a municipality of the Dominican Republic located in the central western part of the country. During the flow monitoring at the border point with Belladere in Haiti, 281 people were identified entering Comendador and 132 people departing for Centre in Haiti. This flow is a temporary transit of border inhabitants and economic migration.

MEANS OF TRANSPORT

Migrants entering



Migrants departing



VULNERABLE POPULATIONS

Migrants entering

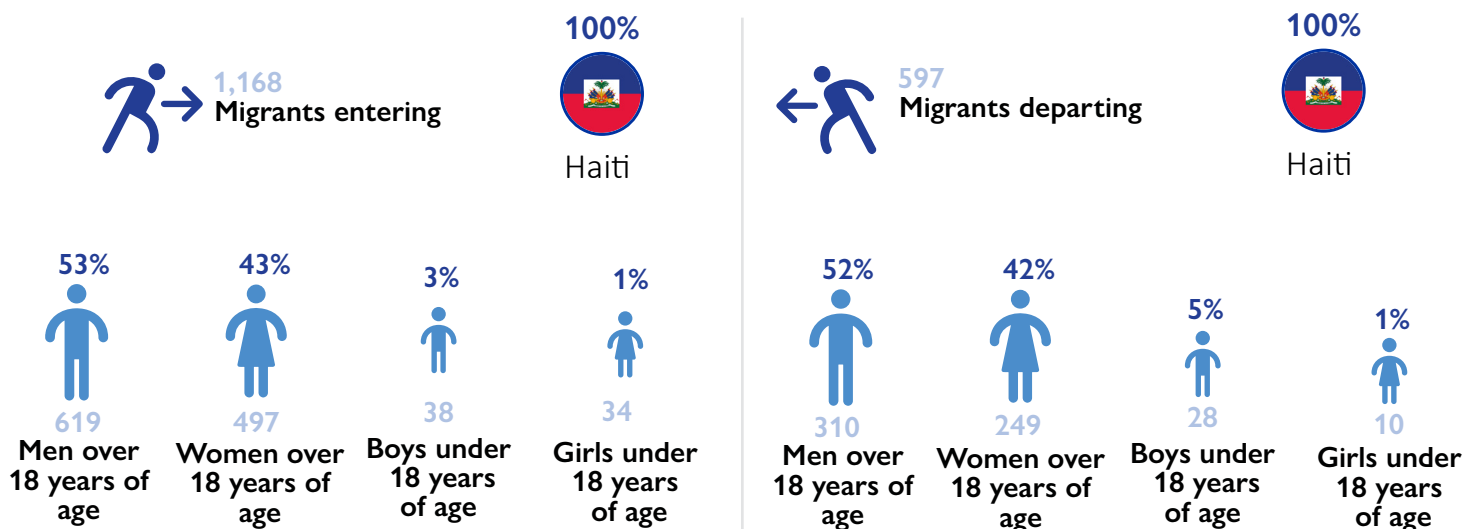


Migrants departing



FLOW MONITORING REGISTRY AT THE JIMANÍ BORDER

DEMOGRAPHIC PROFILE



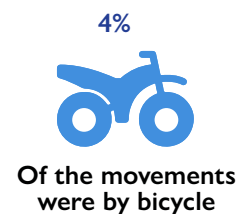
Jimaní is a municipality of the Dominican Republic located in the central-southwestern part of the country. During the flow monitoring at the border point with Malpasse in Haiti, 1,168 people entering Jimaní and 597 people leaving for Centre in Haiti were identified. This flow is a temporary transit of border inhabitants and short-term local movement.

MEANS OF TRANSPORT

Migrants entering

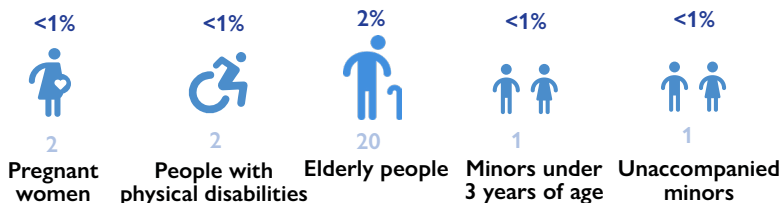


Migrants departing

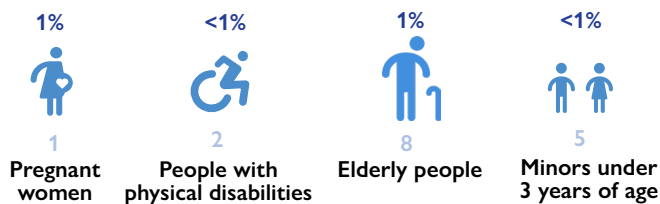


VULNERABLE POPULATIONS

Migrants entering

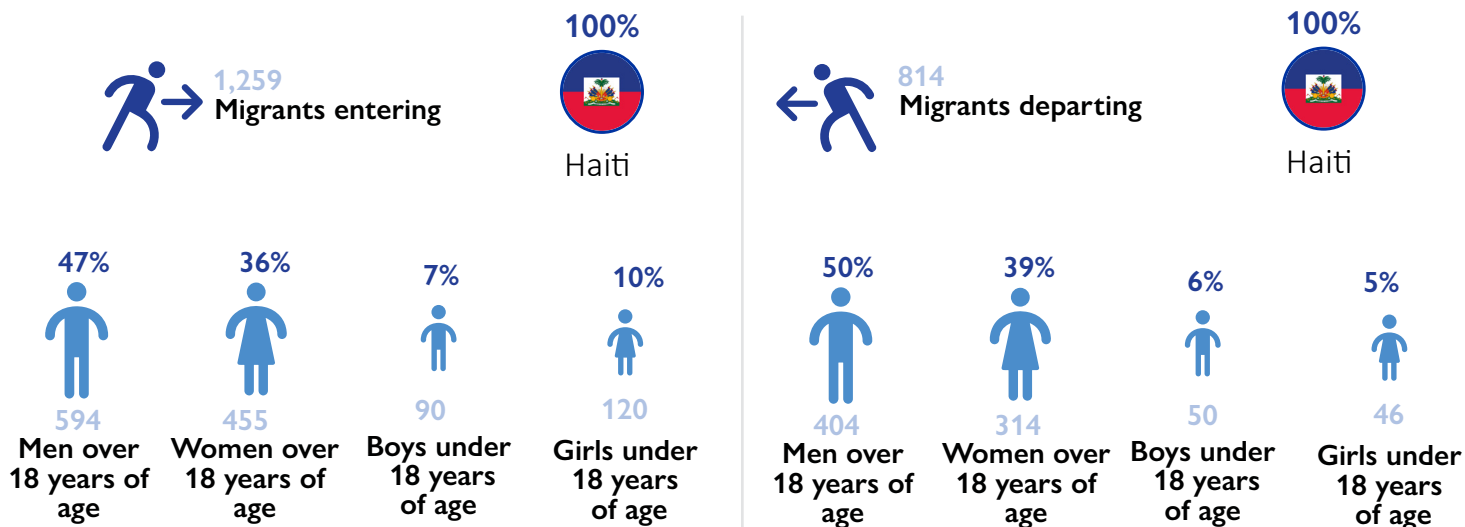


Migrants departing



FLOW MONITORING REGISTRY AT THE PEDERNALES BORDER

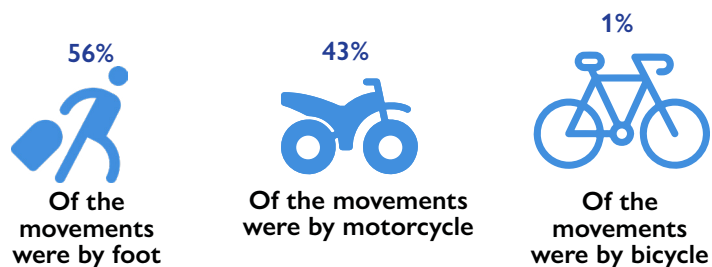
DEMOGRAPHIC PROFILE



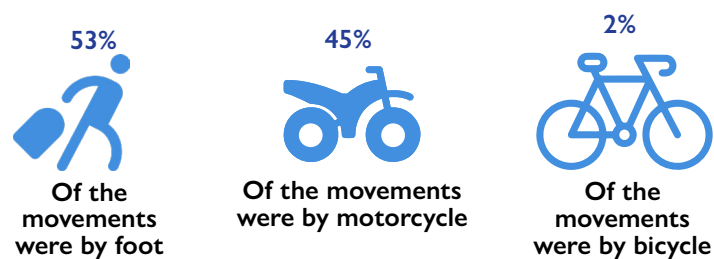
Pedernales is a municipality of the Dominican Republic located in the southwestern part of the country. During the flow monitoring at the border point with Anse-a-Pitre in Haiti, 1,259 people were identified entering Pedernales and 814 people leaving for Sud-Est in Haiti. This flow is a temporary transit of border inhabitants.

MEANS OF TRANSPORT

Migrants entering

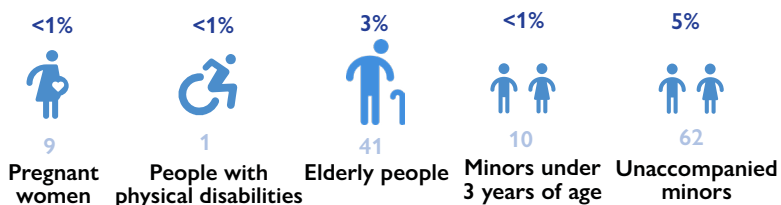


Migrants departing

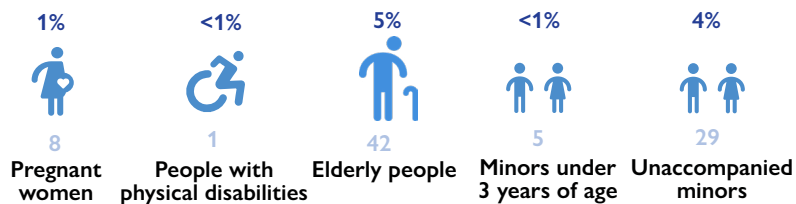


VULNERABLE POPULATIONS

Migrants entering



Migrants departing



The views expressed in International Organization for Migration (IOM) publications are those of the authors and do not necessarily reflect those of IOM or the United States Department of State, Bureau of Population, Refugees and Migration (PRM). The designations employed and the presentation of material in this publication do not imply the expression of any opinion whatsoever on the part of IOM or PRM concerning the legal status of any country, territory, city or area or of its authorities, or concerning the delimitation of its frontiers or boundaries.

IOM is committed to the principle that migration in an orderly and humane manner benefits migrants and society. As an intergovernmental body, IOM works with its partners in the international community to: help address the growing challenges of migration management; enhance understanding of migration issues; encourage social and economic development through migration; and ensure respect for the human dignity and well-being of migrants.

This publication was made possible through the support of the United States Department of State's Bureau of Population, Refugees and Migration (PRM), under the framework of the Western Hemisphere Program. However, the views expressed do not necessarily reflect the official policies of the Government of the United States of America.



Contact information

OM Regional Office for Central America, North America and the Caribbean

Edificio Sabana Business Center,
Boulevard Ernesto Rohrmoser,
San José, Costa Rica.

Email:
iomsanjose2@iom.int

Phone:
+506 2212-5300

Website:
<http://rosanjose.iom.int/site/>

OM National Office in Dominican Republic

Dominicana Calle Socorro Sánchez 152
Santo Domingo

Email:
iomsantodomingo@iom.int

Phone:
+1 809-688-8174

Website:
<https://dominicanrepublic.iom.int/>