

Top LGAs with variation	Tarmuwa	Geidam	Kurmi	Yorro	Jalingo
Round 36	5,296	16,107	1,400	1,482	15,277
Round 35	2,680	10,277	1,924	1,918	19,250
	↑ 98%	↑ 57%	↓ -27%	↓ -23%	↓ -21%

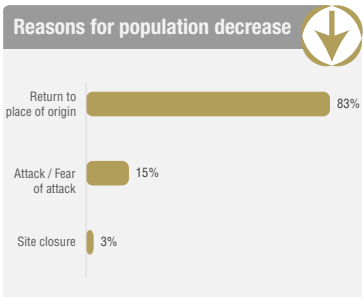
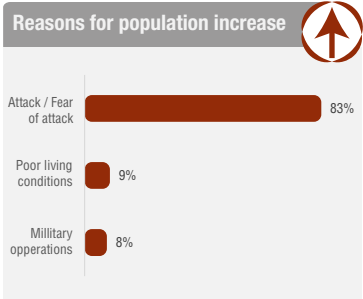
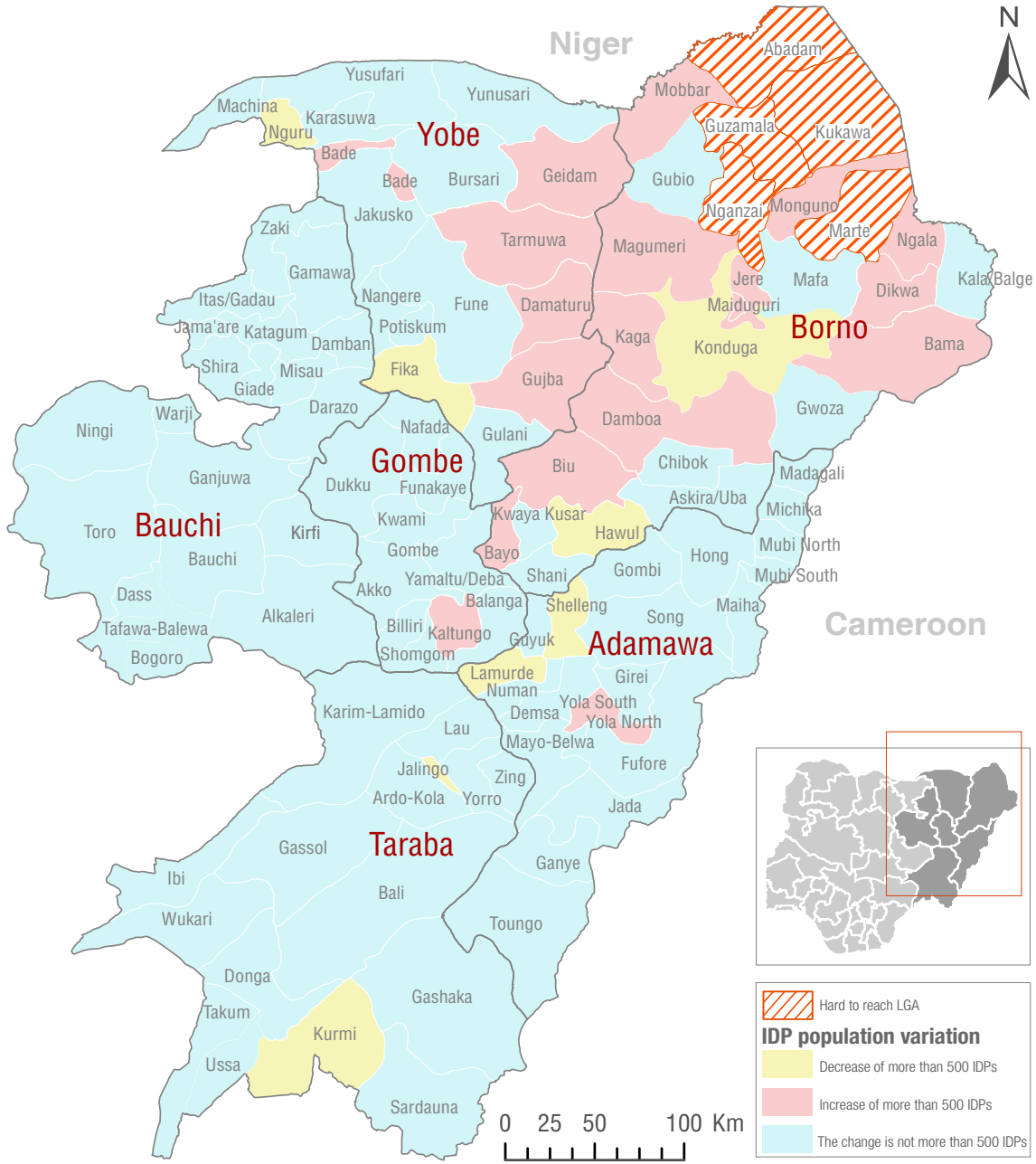
Tarmuwa: The increase of the IDP population in Tarmuwa LGA was a result of multiple attacks by NSAG in and around villages of the LGAs Geidam and Kaga in Yobe and Borno States.

Geidam: The IDP population increased as result of the recent attacks in the inaccessible areas of Geidam LGA. Additionally, an influx from Yunusari LGA was reported as a result of increased threats of abductions, attacks and the forceful confiscation of livestock and other valuables by NSAGs.

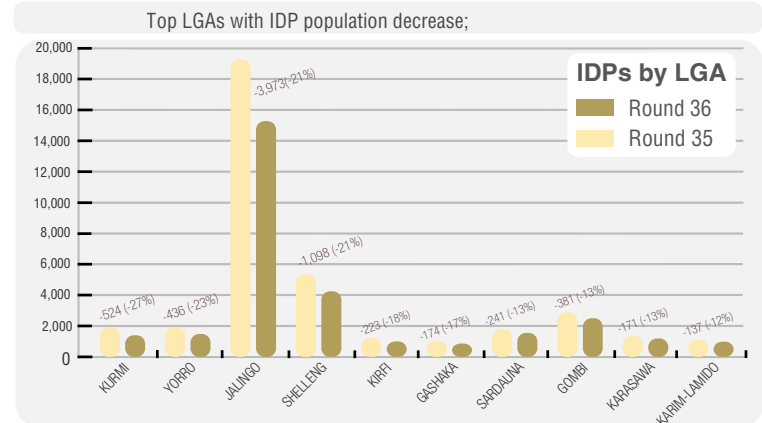
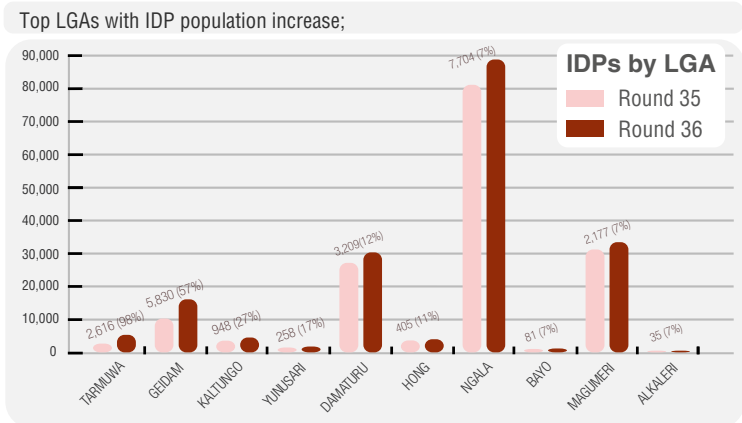
Kurmi: The IDP population in Kurmi LGA decreased because numerous IDPs have returned to their villages of origin as the security situation is relatively calm at the moment.

Yorro: The IDP population decreased as a result of IDPs returning to their place of origin.

Jalingo: The IDP population decreased because numerous IDPs have returned to their villages of origin as the security situation is relatively calm at the moment.



Abadam, Guzamala, kukawa, Marte and Nganzai LGAs were inaccessible during Round 36 assessments because of the recent attacks by Non-State Armed Groups (NSAG)



The depiction and use of boundaries, geographic names, and related data shown on maps and included in this report are not warranted to be error free nor do they imply judgment on the legal status of any territory, or any endorsement or acceptance of such boundaries by IOM. When quoting, paraphrasing, or in any other way using the information mentioned in this report, the source needs to be stated appropriately as follows: "Source: Displacement Tracking Matrix (DTM) of the International Organization for Migration (IOM), December 2020."