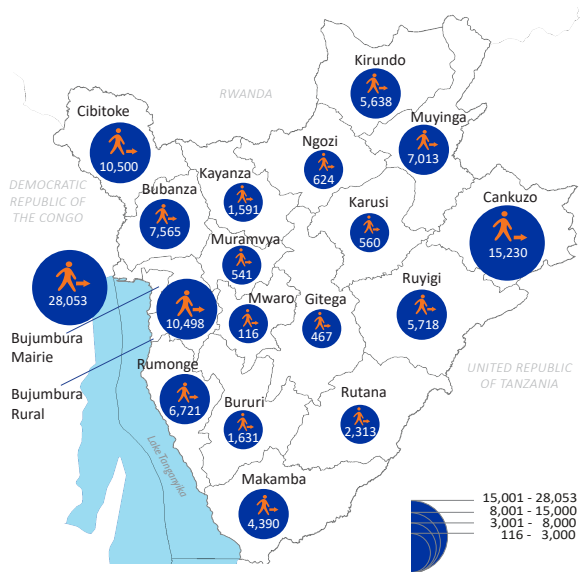




109,169 IDPs*
25,380 Displaced Households

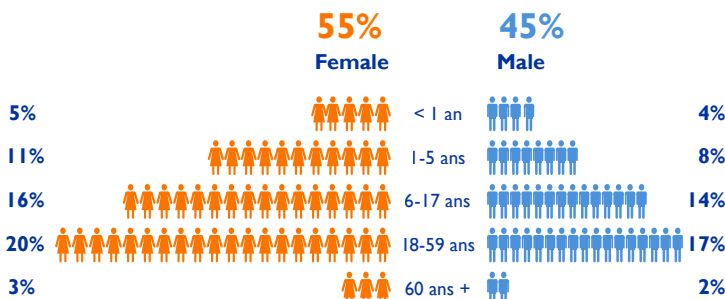
*Internally Displaced Persons

PRESENCE OF IDPs BY PROVINCE

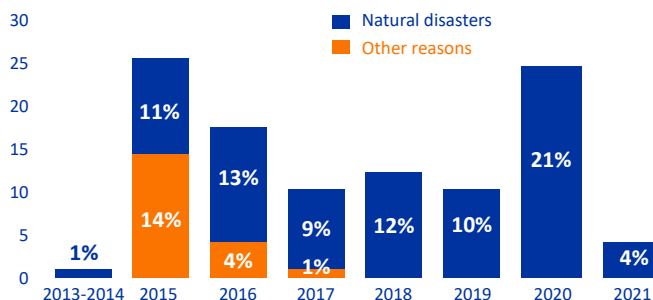


© IOM Burundi - Reference Map (march 2021)
This map is for illustration purposes only. Names and boundaries on this map do not imply official endorsement or acceptance by IOM. Source: IOM, IGBEU

DEMOGRAPHICS

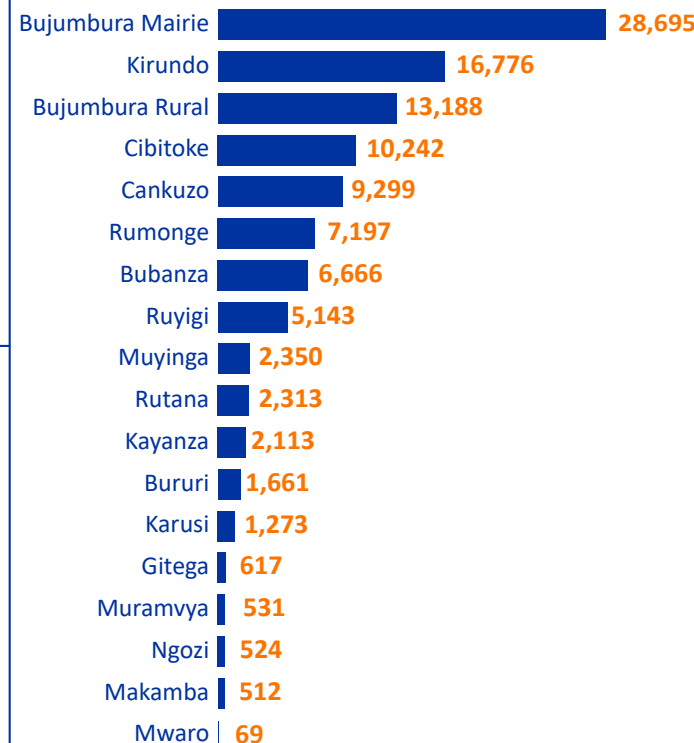


YEAR OF DISPLACEMENT BY DISPLACEMENT REASON*

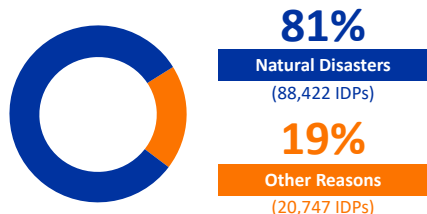


*Currently displaced IDPs

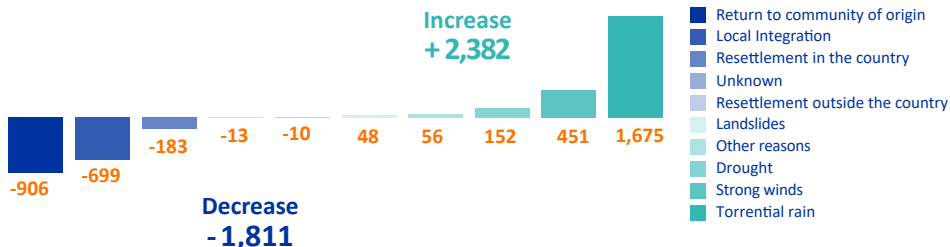
PROVINCES OF ORIGIN



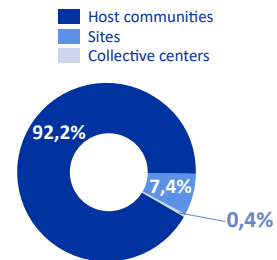
DISPLACEMENT REASONS



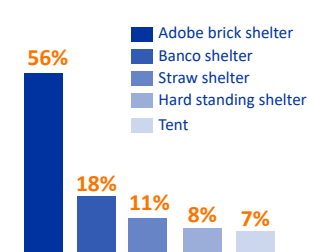
CHANGE IN NUMBER OF IDPs BY REASONS OF MOVEMENT AS COMPARED TO PREVIOUS MONTH



DISPLACEMENT LOCATION TYPES



TYPES OF SHELTER



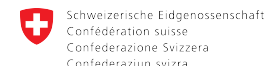
METHODOLOGY: The IOM Displacement Tracking Matrix is a comprehensive system to analyze and disseminate information to better understand the movements and needs of Internally Displaced Persons (IDPs) in Burundi. The Sub Area assessment is conducted monthly at commune level with key Informants. This assessment provide information on number of Internally Displaced Persons (IDP), their provenance, the cause and period of displacement and a list of all the collines that are hosting IDPs. This data collection is conducted by trained Burundian Red Cross volunteers.



INTERNATIONAL ORGANIZATION FOR MIGRATION

DTMBurundi@iom.int - www.displacement.iom.int/burundi

For any information extracted from this document, whether quoted, paraphrased or used in any way, the source must be mentioned as follows: "Source: International Organization for Migration [March 2021], Displacement Tracking Matrix(DTM)". The data were collected in the period between 5 and 30 march 2021.



Swiss Agency for Development and Cooperation SDC