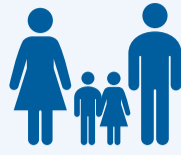


24 April 2021



Households:
664



Individuals:
3,321



Casualties:
91



Movement Trigger:
Attack

OVERVIEW

The lingering conflict in Nigeria's North East Zone has been the major cause of widespread population displacement. Over 2 million persons have been forced to leave their areas of residence in search of safety and security in neighbouring Wards and LGAs.

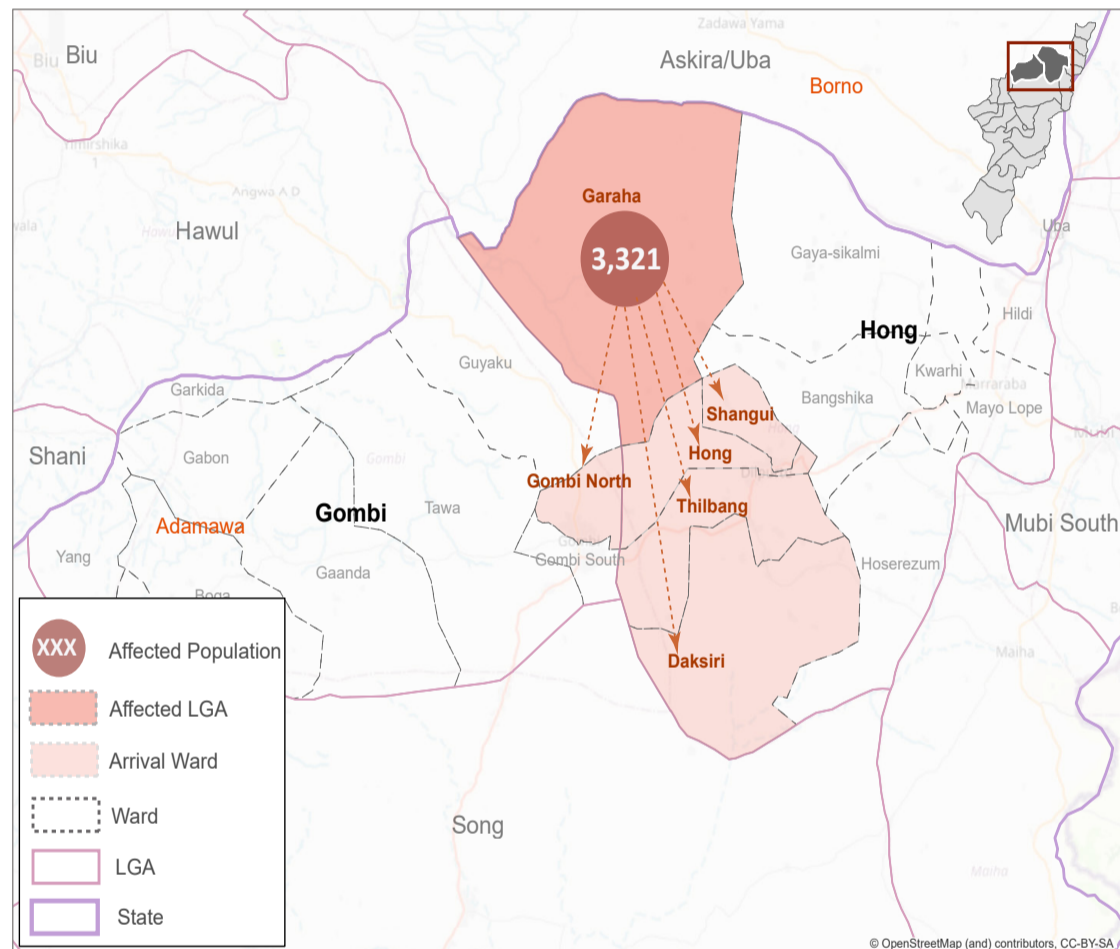
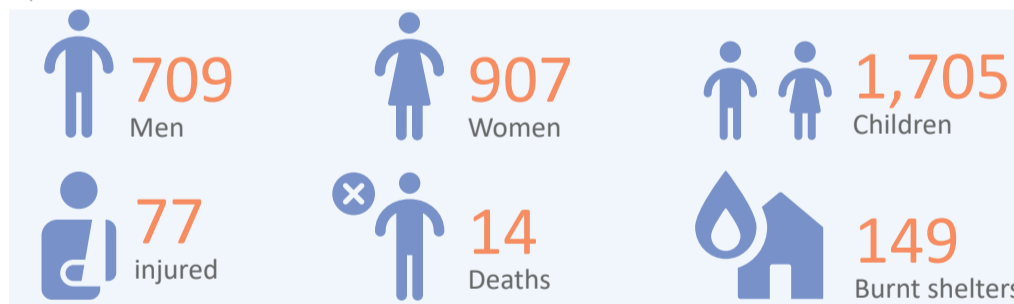
On 20 April 2021, a Non-State Armed Group (NSAG) carried out an attack in Hong LGA of Adamawa State, leading to a substantial wave of population displacement. Following the attack, a rapid assessment was conducted by DTM field staff with the purpose of informing the humanitarian community and government partners, and enabling targeted response. Flash reports utilise direct observation and a broad network of key informants to gather representative data and collect information on the number, profile and immediate needs of the affected population.

As a result of the attack, a total of 3,321 individuals from 664 households were displaced from Garaha ward of Hong LGA in Adamawa State towards the neighbouring ward Gombi North of Gombi LGA and the wards Thilbang, Daksiri, Hong and Shangui of Hong LGA. All displacements were internal to Adamawa State

ARRIVAL SITE TYPE (FIG. 1)

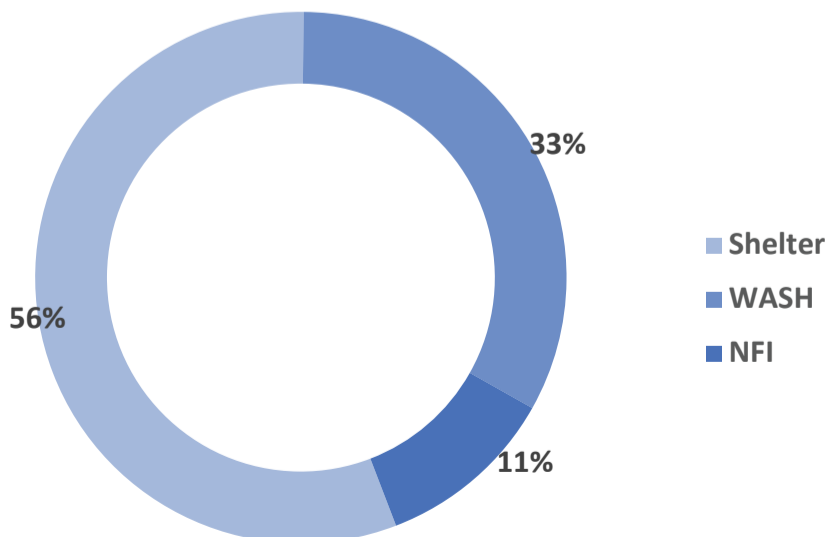


Displaced women and children of Garaha ward after the attack ©IOM-DTM/2021

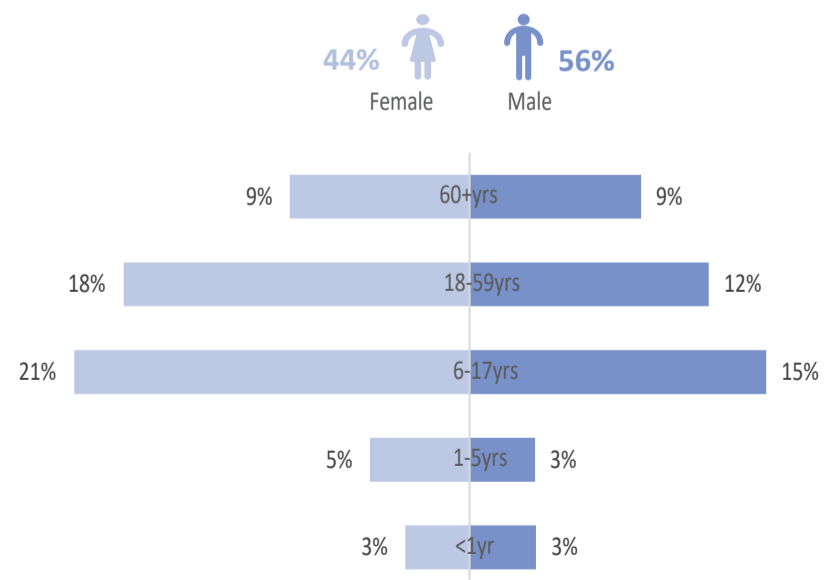


The map is for illustration purposes only. The depiction and use of boundaries, geographic names and related data shown are not warranted to be error free nor do they imply judgment on the legal status of any territory, or any endorsement or acceptance of such boundaries by IOM.

MOST NEEDED ASSISTANCE (FIG. 2)



AGE CLASSIFICATION (FIG. 3)



"When quoting, paraphrasing, or in any other way using the information mentioned in this report, the source needs to be stated appropriately as follows: "Source: Displacement Tracking Matrix (DTM) of the International Organization for Migration (IOM), April 2021.""