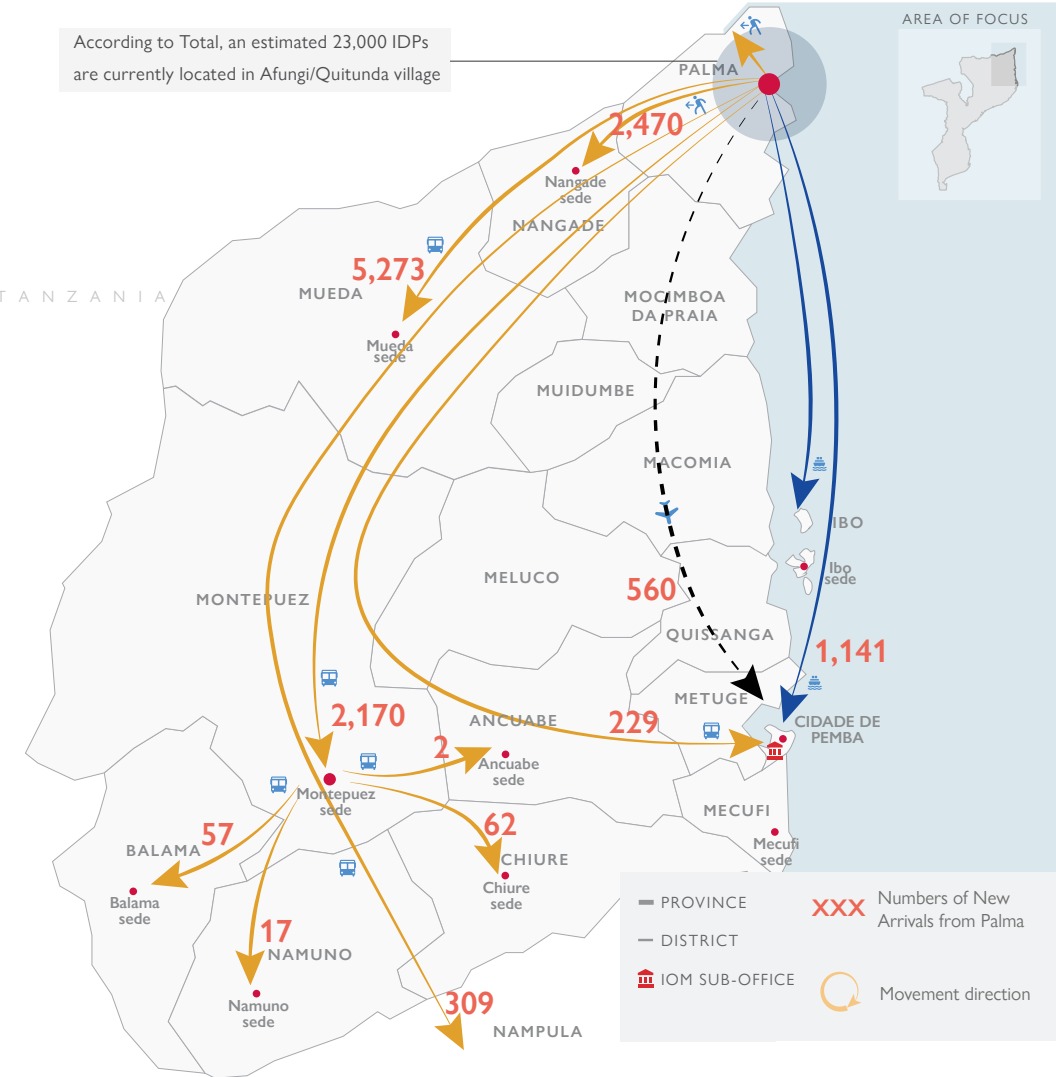


PALMA CRISIS

Following the recent attacks in Palma Sede, DTM teams in Nangade, Mueda, Montpuez, and Pemba districts have registered a significant rise in IDP arrivals since 27 March. As of 06 April 2021 17:00h, an estimated number of 12,290 IDPs had been registered arriving by foot, bus, boat and air from Palma to the four districts. People who have been displaced continue to arrive in Nangade on foot and by bus from Nangade to Mueda, Montpuez, and Pemba.

For live update, [click here](#)



KEY FIGURES

12,290

PEOPLE ON THE MOVE DURING THE REPORTING PERIOD

43%

OF THE IDPs REPORTED ARE CHILDREN

129

UNACCOMPANIED/ SEPARATED CHILDREN

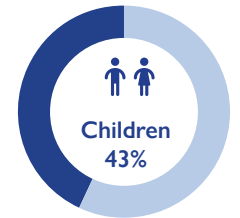
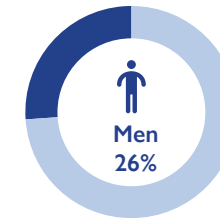
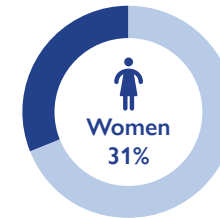
68%

OF THE REPORTED IDPs ARE LIVING WITHIN HOST COMMUNITIES

358

ELDERLY WERE REPORTED, REPRESENTING THE LARGEST VULNERABLE GROUP

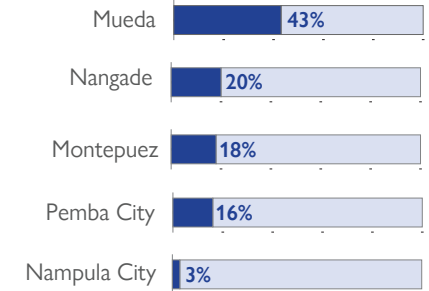
DEMOGRAPHICS



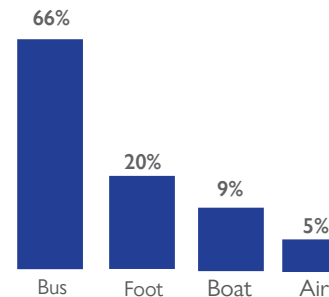
MAIN REPORTED NEEDS



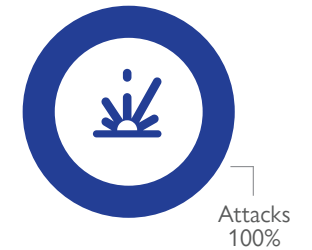
MAIN ARRIVAL DISTRICTS



MEANS OF DISPLACEMENT



REASON OF DISPLACEMENT



ABOUT THE EMERGENCY TRACKING TOOL

The objective of the Emergency Tracking Tool (ETT) is to collect information on large and sudden population movements, and to provide support to the Government and the humanitarian community by disseminating data on IDPs for ensuring effective humanitarian response to the affected population. Emergency tracking teams and enumerators are deployed to Cidade de Pemba, Mueda, Meluco, Nangade, Montepuez, Ancuabe, Namuno, Balama, Chiure, Ibo and Mecufi districts to collect data on displacement movements on a daily basis.

VULNERABILITY BY LOCALITY OF ARRIVAL

Locality	Total Individuals	Unaccompanied/ Separated Children	Pregnant Women	Elderly	Person w/ Disability
Mueda	5,273	15	63	85	7
Bairro Lilondo	209	-	2	3	-
Bairro Maputo	51	-	1	3	-
Bairro Rovuma-2	196	-	1	1	-
Mpembe	965	-	2	11	-
Vila de Mueda	3,852	15	57	67	7
Nangade	2,470	81	51	86	18
Sede	2,470	81	51	86	18
Montepuez	2,170	20	20	149	4
Centro de Nacaca	242	5	1	14	-
Centro de Nanyopo B	72	1	-	-	-
Centro de Ntele	616	1	8	32	1
Centro de Piloto	183	-	-	16	-
Cidade de Montepuez	1,057	13	11	87	3
Cidade De Pemba	1,930	12	24	36	3
Alto Gingone	560	2	14	12	-
Eduardo Mondlane	55	-	2	1	-
Ingonane	206	-	-	12	-
Mahate	25	-	-	-	-
Maringanha	29	1	-	2	-
Muxara	12	-	1	-	-
Natite	48	-	1	2	-
Paquitequete	995	9	6	7	3
Nampula	309	-	-	-	-
Cidade de Nampula	309	-	-	-	-
Chiure	62	-	1	2	-
Nahavara	11	-	-	-	-
Vila de Chiúre	51	-	1	2	-
Balama	57	1	2	-	-
Ingonane	14	1	-	-	-
Marimba A	8	-	1	-	-
Marimba B	14	-	-	-	-
Ntanta	21	-	1	-	-
Namuno	17	-	-	-	-
Milipone	17	-	-	-	-
Ancuabe	2	-	-	-	-
Sede	2	-	-	-	-
Grand Total	12,290	129	161	358	32

DISPLACEMENT FLOWS BY DISTRICTS (ARRIVALS)

