



IOM's Displacement Tracking Matrix continued operating Displacement Site Flow Monitoring (DSFM) at the gates of Bentiu Protection of Civilians (PoC) site. In the last quarter of 2020 (October – December), 5,077 interviews were conducted representing 17,347 individual movements in and out of the site. There has been a 17 per cent increase in surveyed day movements compared to the previous quarter, in line with a similar increase in daily gate count volume. Most day movements out of the site were by women and girls (77%), usually travelling for livelihood reasons. On the other hand, the main reason for temporary movement was to visit friends or family, followed by attempting to return home. Flow monitoring enumerators also surveyed 64 newly arriving individuals, compared to 44 in DSFM July – September 2020. Almost half came to join family, followed by access to healthcare and other services. Over two thirds of new arrivals intend to stay more than six months. The number of surveyed permanent exits from the site reduced slightly to 176 (200 in July - September), 61 per cent of whom were women and girls. The main reason for exit was improved circumstances at destination (48%), followed by safety concerns (15%).

Methodology:

Displacement Site Monitoring (DSFM) involves interviewing a cross-section of persons passing through the gates. DTM aims to understand mobility dynamics and reasons underpinning movements in and out of the site to provide partners and policy makers with a better understanding of movement patterns (including same day movement, temporary travel, new entry and permanent exit). Interviews are conducted seven days a week from 8 a.m. to 5 p.m. at the site's main gates. DSFM provides as indicative traveller profile for the given months rather than comprehensive or representative estimates.

December Population Count

95,980 ind. (14,934 households)



48,366 (50%) Male



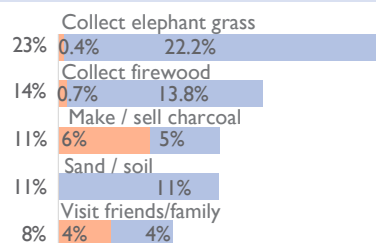
47,614 (50%) Female

Same Day Travel n = 9,079



Main reason for movement in to and out of the site: Collect elephant grass

Top 5 reasons for same day movement



Reasons continued: Washing clothes (6%), to buy things (7%), food distribution on-site (4%), farming / fishing (4%), other livelihood activity (2%) and other (9%).

Daily gate count

During the outbreak of COVID-19, DTM conducted daily gate counts for individual movements in and out of the site. Daily average movement from October to December 2020 are as indicated in the table below.

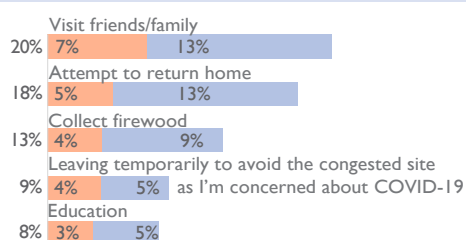
Month	Entry Average	Exit Average	Net Flow
October	15,495	15,124	371
November	15,930	15,558	372
December	17,066	17,292	-226

Temporary Travel n = 8,028



Main reason for movement in to and out of the site: Visit friends/ family

Top 5 reasons for temporary movement



Reasons continued: Collect elephant grass (6%), reduced / canceled services at the site following COVID-19 prevention measures (5%), health services (4%), check on / repair property (4%), cattle camp visit (3%), make / sell charcoal (%), religious services (2%) and other (6%).

Intended period of stay/ time spent away

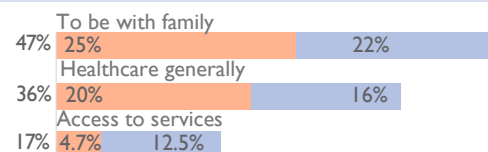


New Arrivals n = 64



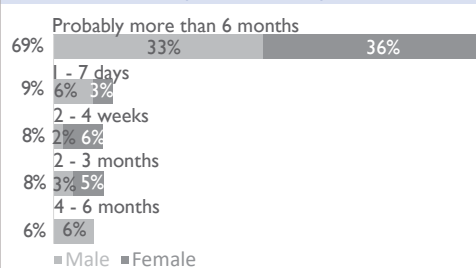
Main reason for movement in to the site: To be with family

Top reasons for new arrivals



No other reasons recorded.

Intended period of stay at the site

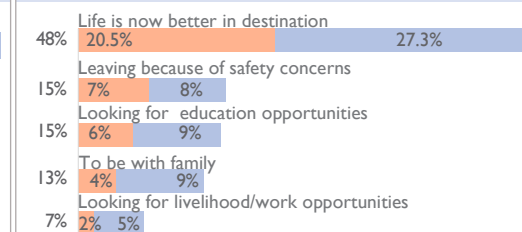


Permanent Exits n = 176



Main reason for movement out of the site: Life is now better at destination

Top 5 reasons for permanent exit



Reasons continued: Leaving because of uncomfortable living conditions (2%)

Nature & top destinations of permanent exits

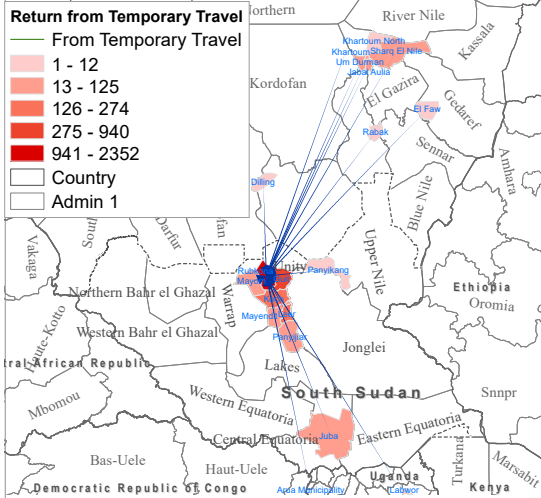
Nature of Destination	% of permanent exit	Main counties by nature of destination
Former Home	66%	Leer
New Home, different area	19%	Juba
Former area but new home	14%	Guit
Other Displacement site	1%	Juba

¹Disclaimer: [Rounding] Percentages may not add up to 100% as a result of rounding error.



Movement Dynamics

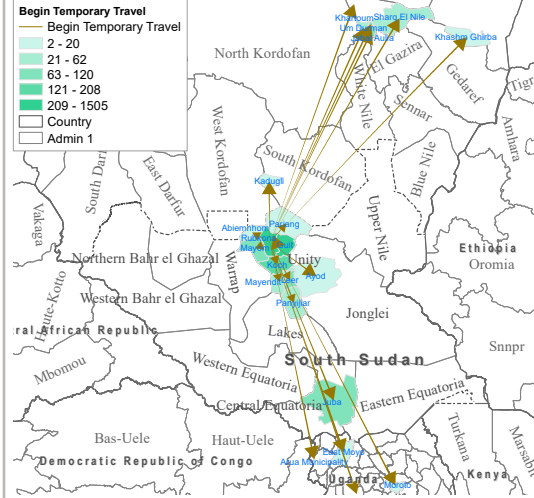
Return from temporary travel n = 4,594



Counties of origin

Rubkona	51%
Guit	20%
Khartoum (SDN)	8%
Koch	6%
Leer	6%
Mayendit	3%
Mayom	2%
Other	4%

Embarking on temporary journey n = 3,434

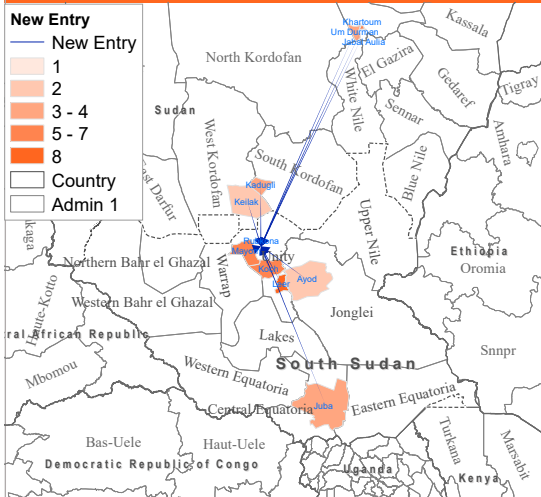


Counties of intended destinations

Rubkona	44%
Guit	27%
Koch	6%
Leer	3%
Mayom	3%
Jabal Aulia (SDN)	3%
Other	14%

52% of all movements were recorded as same-day travel with no night spent away from the site. Same-day travel is mostly limited to the immediate surroundings and locations are not recorded.

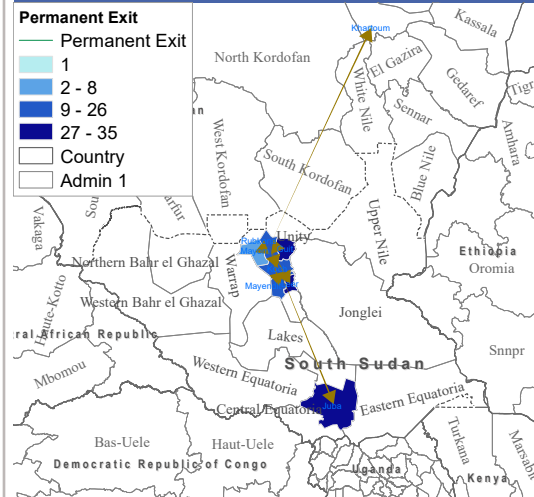
New arrivals n = 64



Counties of origin

Rubkona	17%
Jabal Aulia (SDN)	16%
Leer	13%
Koch	11%
Mayom	11%
Khartoum (SDN)	9%
Um Durman (SDN)	6%
Juba	5%
Other	12%

Permanent exit n = 176



Counties of intended destinations

Guit	20%
Leer	20%
Juba	17%
Koch	15%
Rubkona	13%
Mayendit	11%
Other	4%