

DISPLACEMENT TRACKING MATRIX EMERGENCY TRACKING

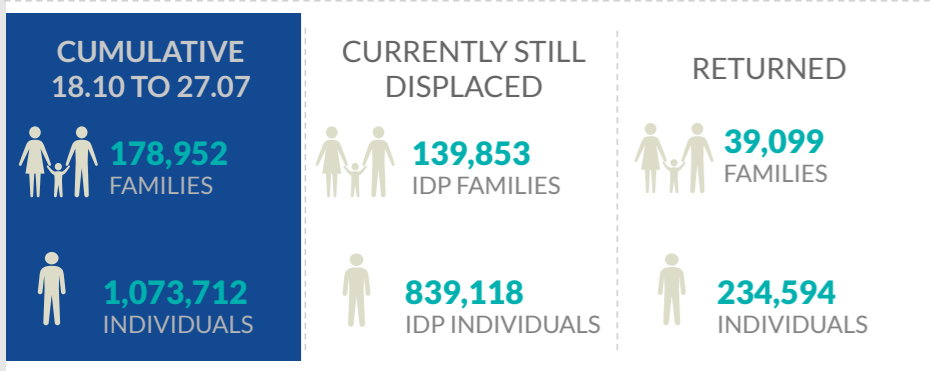
FACTSHEET #39 - MOSUL OPERATIONS FROM 17 OCTOBER TO 27 JULY

The Emergency Tracking (ET) system is a crisis-based tool that aims at tracking sudden displacement or return movements triggered by specific crises. The ET figures reported on this portal are not cumulative of the all persons affected by the Mosul crisis thus far, rather the ET update provides only a snapshot of

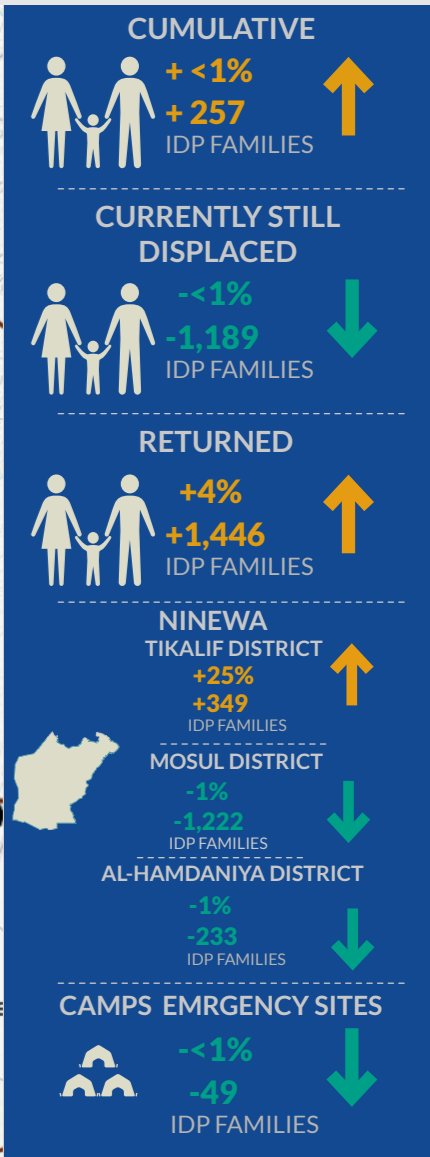
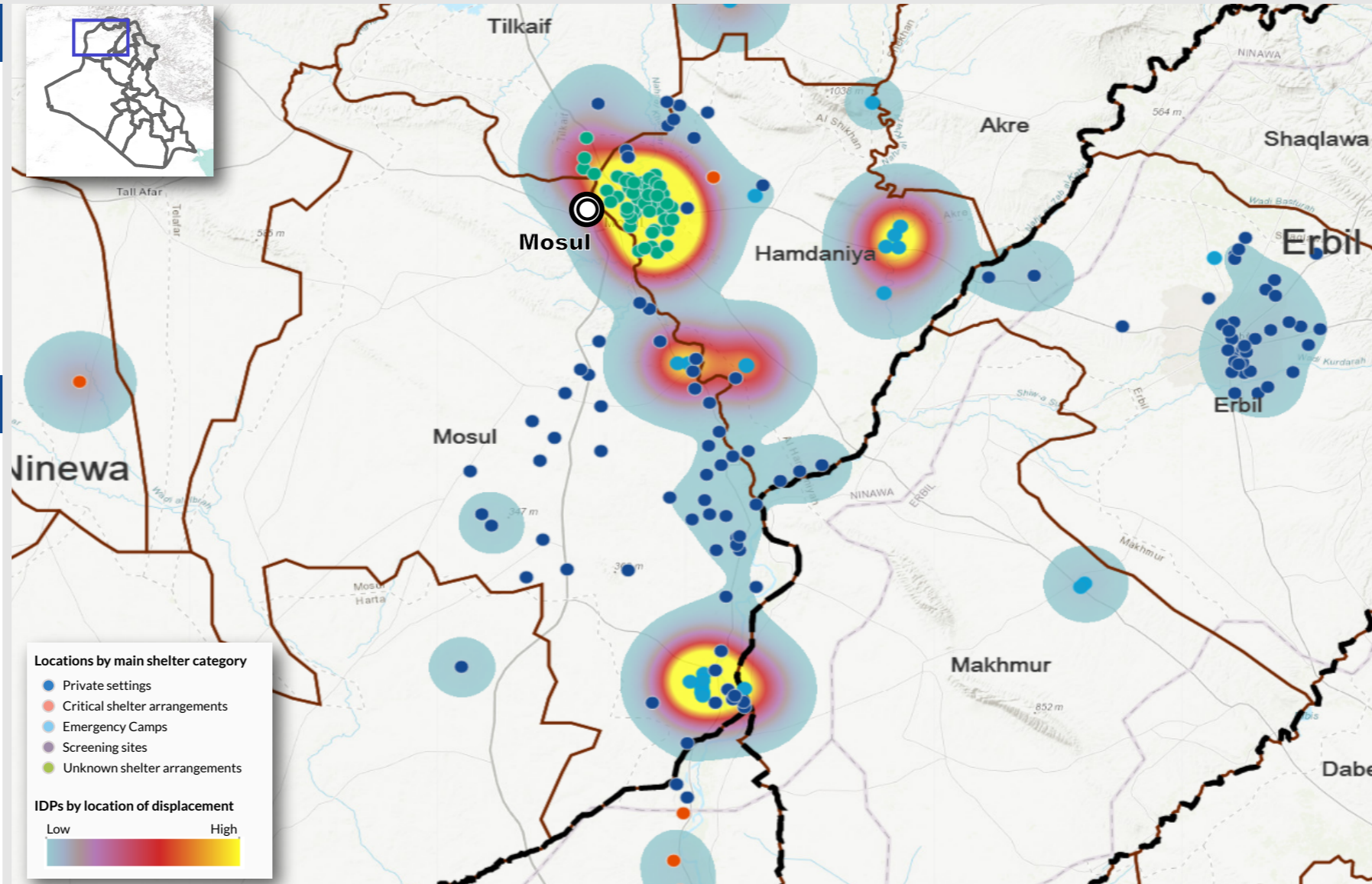
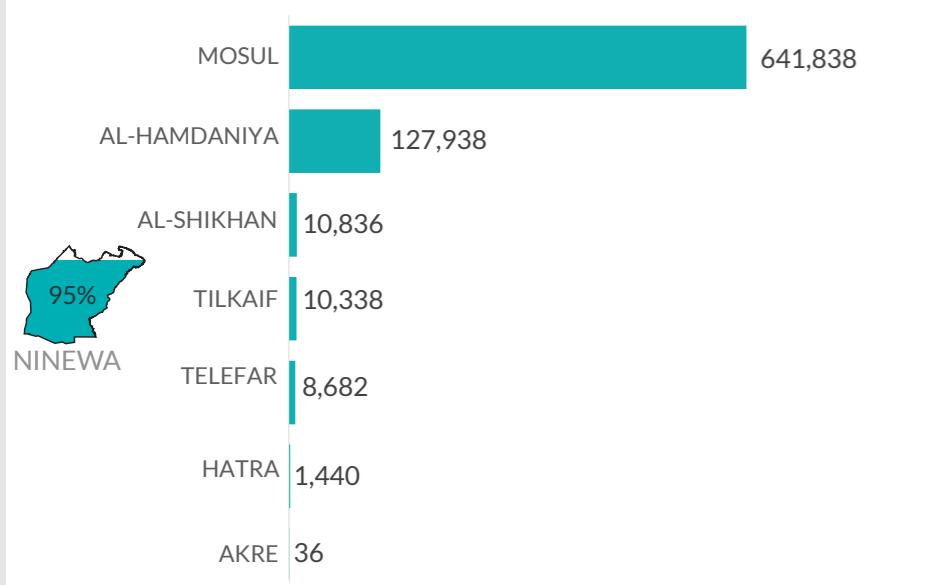
the current displacement situation for the indicated date. The data and information reported on this page are related solely to the displacement caused by the Mosul operations which started on 17 October 2016. Find more information at the Mosul Data Portal: <http://iraqdtm.iom.int/EmergencyTracking.aspx>



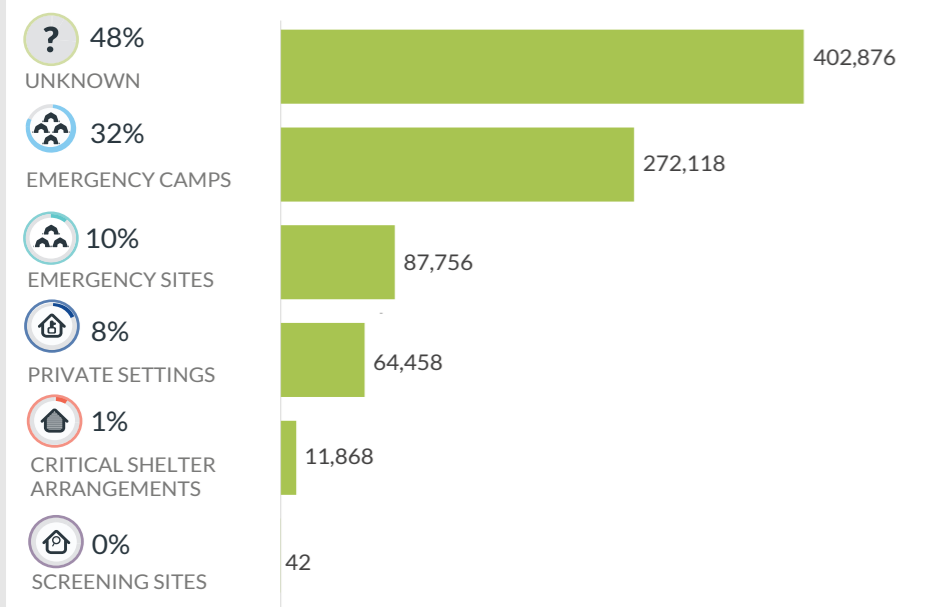
CUMULATIVE FIGURES



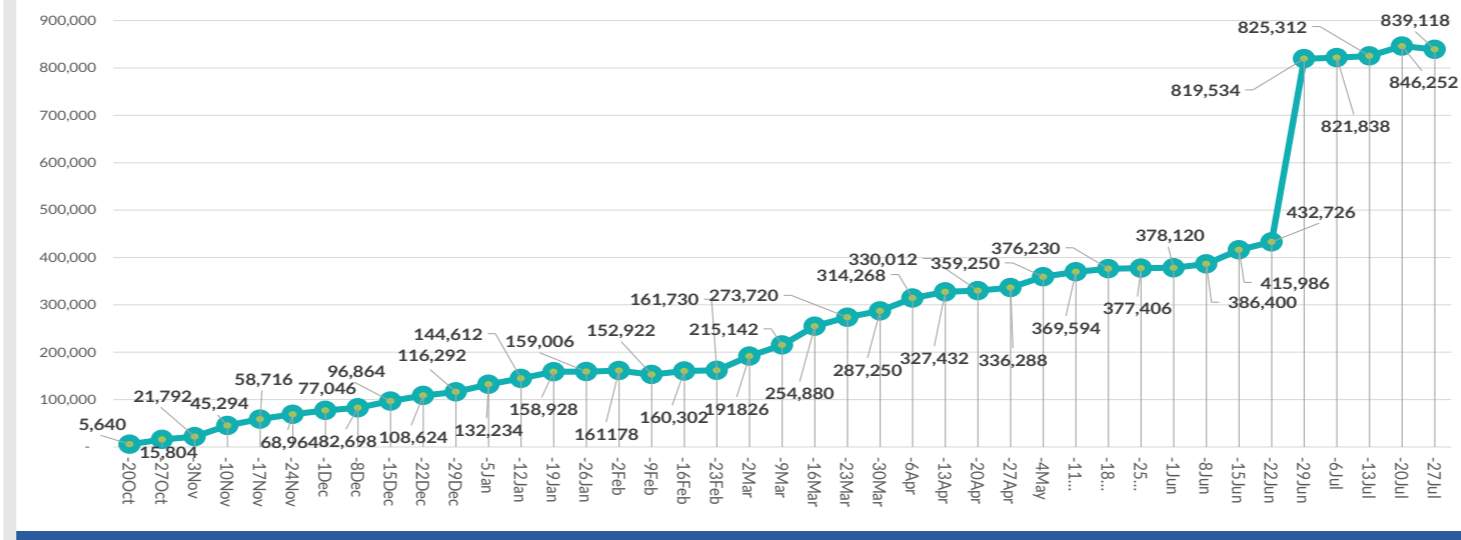
NUMBER OF IDPS BY MAIN DISTRICT OF DISPLACEMENT



NUMBER OF IDPS BY SHELTER CATEGORY



DISPLACEMENT TIMELINE FROM 17 OCTOBER: WEEKLY UPDATES



Following a close collaboration with local authorities initiated in early February 2017, DTM established a joint information collection system to gather consistent data at the neighborhood level, on IDPs displaced within the city of Mosul. The estimate of 380,000 IDPs (over 63,000 families) displaced to east Mosul due to the west Mosul operations is attributed to the integration of the new findings, not to a specific event.

All information collected on IDPs and returnees is included in the Emergency Tracking (ET) database once the locations of displacement or return have been identified and validated. The identification of the locations of displacement of the new arrivals requires some time, especially in out-of-camp locations. As some areas are not easily accessible, time is required between an actual population movement and its tracking and reporting.