



The landfall of Tropical Cyclone Eloise in the night of 23 January 2021 and Tropical Storm Chalane on 30 December 2020 has affected Sofala, Manica, the southern part of Zambezia, Inhambane, and Gaza provinces. Sofala was the most affected province, with Buzi, Dondo Nhamatanda, and Chibabava districts reporting significant damages to shelters, while Caia, also in Sofala province reported some damages in four of the resettlement sites assessed in the district. The Province of Manica, more specifically Sussundenga district, also reported some damages after the tropical cyclone, the southern part of Zambezia also reported damages to shelters in resettlement sites.

### RAPID ASSESSMENT

Following these events, a rapid assessment was conducted by the International Organization for Migration (IOM) in collaboration with the National Institute for Disaster Management and Risk Reduction (INGD), between the 24 to 26 January 2021. The assessment focuses on understanding the extent of damages to shelters and facilities across all 70 existing resettlement sites in Sofala, Manica, and Zambezia Provinces, which were established in the aftermath of Tropical Cyclone Idai in 2019. These resettlement sites are particularly exposed and vulnerable to damages as a result of environmental factors, since durable solutions and build back better initiatives are not yet comprehensively supported and implemented at this point in time. Therefore, damages were reported in resettlement sites where people displaced by Cyclone Idai live, with thousands of tents and temporary shelters destroyed, as well as permanent structures such as schools and hospitals.

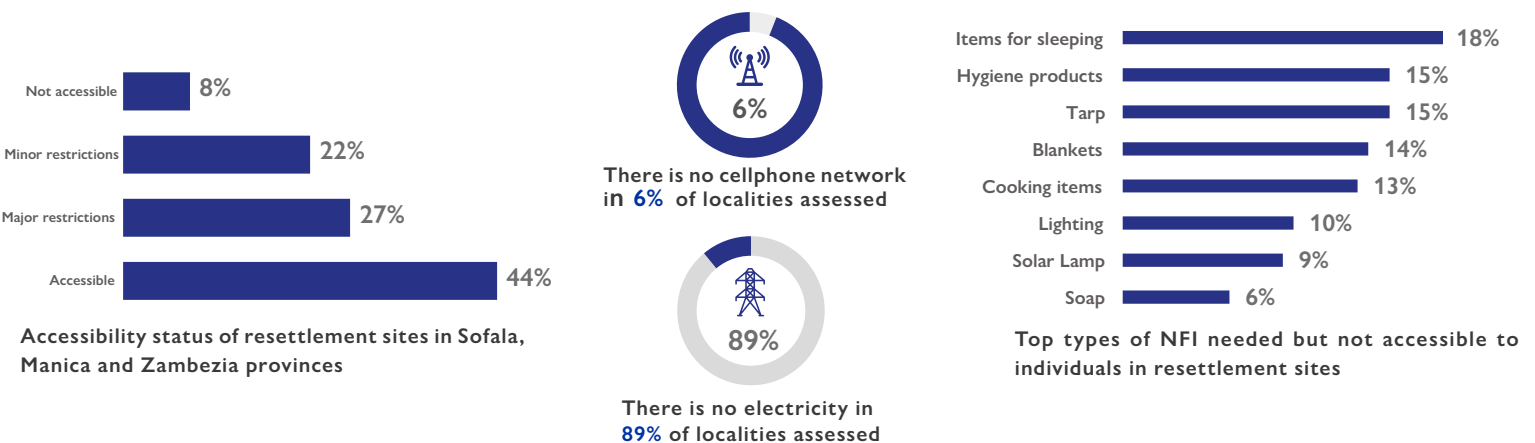
As a result of the impact of Tropical Cyclone Eloise, 8,755 families had their tents and shelters destroyed/partially destroyed. Of these, 6,790 are located in Sofala, 1,695 in Manica, and 270 in Zambezia provinces. The affected districts are Buzi (4,619 households), Dondo (1,230 households), Chibabava (773 households), Caia (66 households), and Nhamatanda (102) all in Sofala province; Sussundenga (1,695 households) in Manica province; and Maganja da Costa (143 households), Namacurra (62 households), and Nicoadala (65 households) all in Zambezia province. In total, five resettlement sites out of the 70 resettlement sites assessed are still inaccessible by road due to flooding as of 26 January 2021, these are: Inhajou 2019 (446 households), and Nhamacunta (430 households) in Buzi district, and Savane (283 households), all in Sofala province; Tossene Choma (339 households) and Ngurue (138 households) in Sussundenga of Manica (households figures for the inaccessible sites were extracted from [the Multi-sectoral Location Assessment \[MSLA\] Round 18](#), conducted immediately after Tropical Storm Chalane).

In total, 563 upgraded shelters, 6,662 emergency shelters, 1,032 tents and 498 permanent houses were completely or partially destroyed due to the rain and strong winds. Additionally, IOM/INGD identified 5,292 latrines and eight water points damaged.

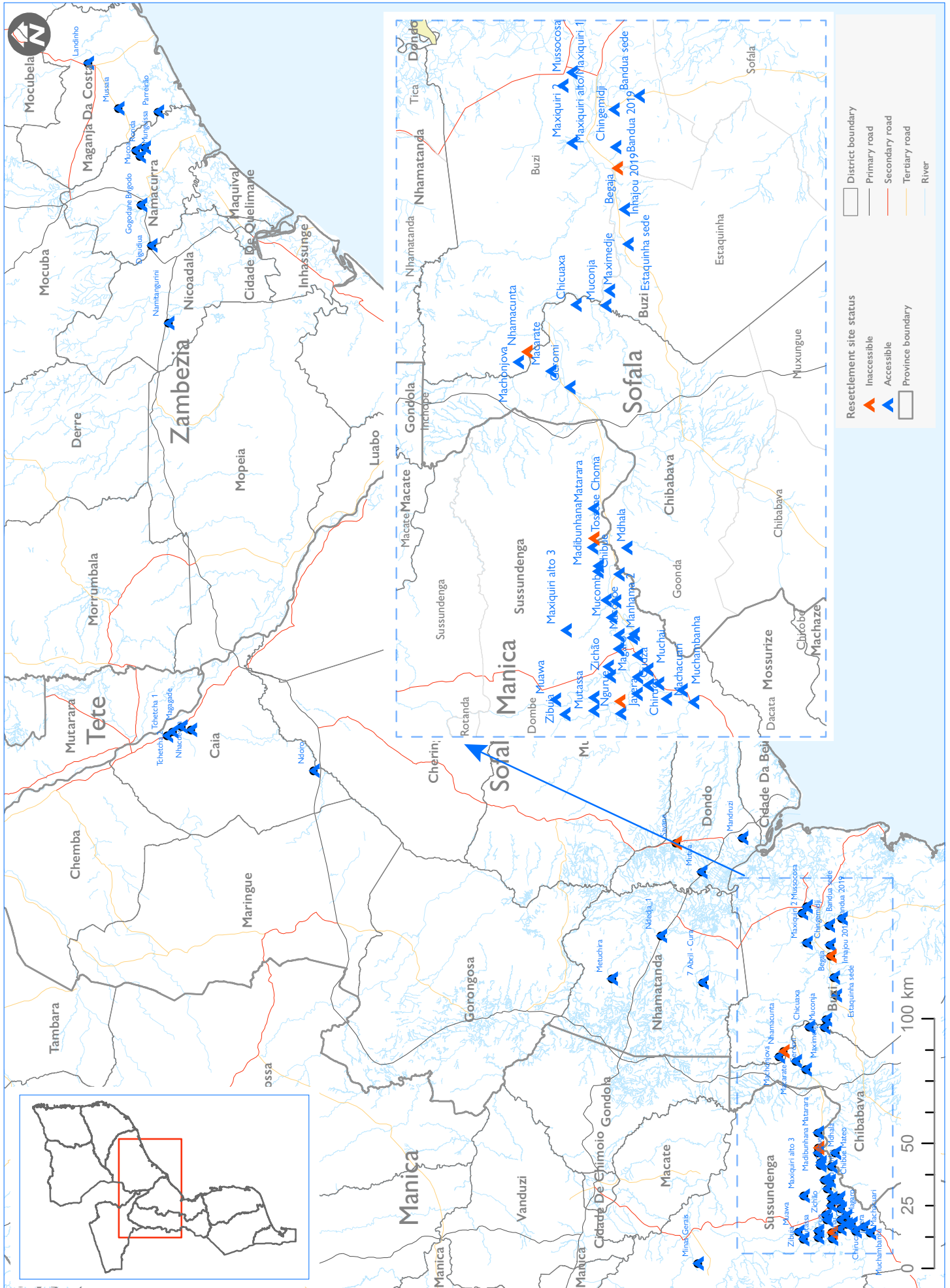
Moreover, 11 schools near or on the sites were damaged. All are located in Sofala, six in Dondo district, three in Nhamatanda district and two in Dondo.

Six health centers near sites were also damaged, in the resettlement site of Maxiquiri Alto/Maxiquiri 1 (Buzi), Macarate (Chibabava), Mutua (Dondo) and Ndedja 1, Metuchira and 7 Abril-Cura (Nhamatanda).

In the resettlement sites of Mutua (Dondo) and 7 Abril-Cura (Nhamatanda), two children were reported to have been separated from their parents in the process of leaving at-risk areas. Two elderly persons were left behind without care in the forementioned sites.



# MAP OF ASSESSED SITES



This map is for illustration purposes only. The boundaries and names shown and the designations used on this map do not imply official endorsement or acceptance by the International Organization for Migration.

# RESETTLEMENT SITES AFFECTED IN SOFALA, MANICA, AND ZAMBEZIA

## BY TROPICAL CYCLONE ELOISE

The table below summarizes the extent of damages to shelters and facilities across all 65 assessable resettlement sites in Sofala, Manica, and Provinces. Please note that for the temporary structures (upgraded shelters, emergency shelters and tents), the total figure provided is a sum of affected structures (both partially and totally destroyed). For more information, and to have access to the complete data set, please contact the IOM/DTM team (DTMMozambique@iom.int).

Location details			Condition of site	Temporary structure destroyed or partially destroyed			Infrastructures destroyed or partially destroyed							
Province	District	Resettlement site	Is the site accessible	Upgraded shelter	Emergency shelters	Tent	Permanent house	Latrines (in unit)	Water points	health centre damaged?	Is the school damaged?			
Manica	Sussundenga	25 de Setembro	Minor restrictions	17	-	-	-	152	-	No	No			
		Bairro da Unidade	Minor restrictions	144	-	-	-	127	-	No	No			
		Chibue	Major restrictions	8	109	-	4	71	4	No	No			
		Chibue Mateo	Major restrictions	12	87	-	-	12	-	No	Yes			
		Chiruca	Minor restrictions	-	6	-	-	-	-	No	No			
		Gudza	Major restrictions	-	14	-	-	12	-	No	Yes			
		Javera	Accessible	-	9	-	-	2	-	No	No			
		Machacuari	Major restrictions	-	11	-	-	1	-	No	Yes			
		Macocoe	Minor restrictions	4	-	-	97	-	-	No	No			
		Madibunhana	Minor restrictions	-	-	-	196	196	-	No	No			
		Magaro	Accessible	35	-	-	-	9	-	No	No			
		Magueba	Major restrictions	-	6	-	-	2	-	No	No			
		Manhama 1	Major restrictions	2	88	-	6	10	-	No	No			
		Manhama 2	Major restrictions	7	14	-	5	16	-	No	No			
		Manhandure	Major restrictions	-	31	-	-	4	-	No	No			
		Matarara	Minor restrictions	138	-	-	-	194	-	No	No			
		Metchisso	Accessible	-	-	-	1	25	-	No	No			
		Minas Gerais	Major restrictions	3	46	-	-	17	-	No	No			
		Muawa	Accessible	-	300	-	-	10	-	No	No			
		Muchai	Major restrictions	-	35	-	-	7	-	No	Yes			
		Muchambanha	Minor restrictions	-	1	-	-	28	-	No	Yes			
		Mucombe	Minor restrictions	30	-	-	-	61	-	No	No			
		Muoco Chiguendere (Madudo)	Major restrictions	-	54	-	-	-	-	No	No			
		Mutassa	Major restrictions	-	36	-	-	10	-	No	No			
		Nhamississua	Accessible	-	-	-	-	1	-	No	No			
		Nhanhamba 1	Accessible	-	-	-	8	19	-	No	No			
		Nhanhamba 2	Accessible	-	-	-	19	260	-	No	No			
		Zibuia	Major restrictions	-	17	-	-	10	-	No	No			
Zichão	Major restrictions	-	95	-	-	41	-	No	No					
Sussundenga Total				400	959	-	336	1297	4					
<b>Manica Total</b>				400	959	-	336	1297	4					
Sofala	Buzi	Bandua 2019	Accessible	-	830	-	-	102	-	No	No			
		Bandua sede	Accessible	-	441	-	-	90	-	No	No			
		Begaja	Not accessible	-	195	-	-	81	-	No	No			
		Chingemidji	Accessible	-	442	-	-	32	-	No	No			
		Estaquinha sede	Minor restrictions	-	242	-	-	73	-	No	No			
		Machonjova	Minor restrictions	-	391	-	-	58	-	No	No			
		Maximedje	Not accessible	-	185	-	-	135	-	No	No			
		Maxiquiri 2	Accessible	46	10	-	6	234	1	No	No			
		Maxiquiri alto 3	Accessible	-	174	-	47	15	9	-	No	No		
		Maxiquiri alto/Maxiquiri 1	Accessible	-	141	-	313	675	-	Yes	No			
		Mussocosa	Accessible	19	3	-	19	9	-	No	No			
		Buzi Total				65	4,154	-	379	21	1498	1		
		Caia		Magagosa	Accessible	-	10	-	-	10	5	-	Don't know	No
				Nhacuecha	Major restrictions	-	3	-	-	3	6	-	No	No
				Tchetcha 2	Accessible	-	5	-	-	5	1	-	No	No
				Tchetcha 1	Accessible	-	15	-	-	15	6	-	No	No
		Caia Total				-	33	-	-	33	18	-		
		Chibabava		Chicuaxa	Not accessible	-	-	-	296	-	200	-	Yes	No
				Geromi	Not accessible	-	52	-	5	-	30	-	No	Yes
				Macarate	Minor restrictions	-	-	-	45	-	150	-	No	No
Mdhala	Not accessible			-	43	-	57	-	50	-	No	No		
Muconja	Major restrictions			-	30	-	245	-	220	-	No	No		
Chibabava Total				-	125	-	648	-	650	-				
Dondo		Mandruzi	Accessible	5	527	-	-	4	372	-	No	Yes		
		Mutua	Major restrictions	-	694	-	-	-	550	2	Yes	Yes		
Dondo Total				5	1221	-	-	4	922	2				
Nhamatanda		7 Abril - Cura	Minor restrictions	-	35	-	-	163	-	Yes	Yes			
		Metuchira	Minor restrictions	20	32	-	-	83	1	Yes	Yes			
		Ndedja_1	Accessible	-	15	-	-	380	-	Yes	Yes			
Nhamatanda Total				20	82	-	-	626	1					
<b>Sofala Total</b>				90	5,615	-	1027	58	3,714	4				
Zambezia	Maganja Da Costa	Landinho	Accessible	-	-	-	-	-	-	Don't know	No			
		Mussaia	Accessible	19	-	-	-	16	15	-	No	No		
		Parreirão	Minor restrictions	54	-	-	-	54	150	-	No	No		
	Maganja Da Costa Total				73	-	-	-	70	165	-			
	Namacurra		Brigo do	Accessible	-	5	-	1	24	-	-	No	No	
			Gogodane	Accessible	-	-	-	1	-	22	-	-	-	
			Mucoa	Accessible	-	2	-	2	4	-	-	No	No	
			Munguissa	Accessible	-	-	-	-	6	-	-	No	No	
			Ronda	Accessible	-	17	-	-	-	-	-	No	No	
	Namacurra Total				-	24	-	4	34	22	-	No	No	
	Nicoadala		Digudiua	Accessible	-	57	-	1	-	94	-	No	No	
			Namitangurini	Accessible	-	7	-	-	-	-	-	No	No	
Nicoadala Total				-	64	-	1	-	94	-	No	No		
<b>Zambezia Total</b>				73	88	-	5	104	281	-				
<b>Grand Total</b>				563	6,662	-	1032	498	5,292	8				

Website : <https://displacement.iom.int/mozambique>  
 Feedback: DTMMozambique@iom.int  
 @IOM\_Mozambique

When quoting, paraphrasing, or in any other way using the information mentioned in this report, the source needs to be stated appropriately as follows: The International Organization for Migration January, 2021, Displacement Tracking Matrix.

