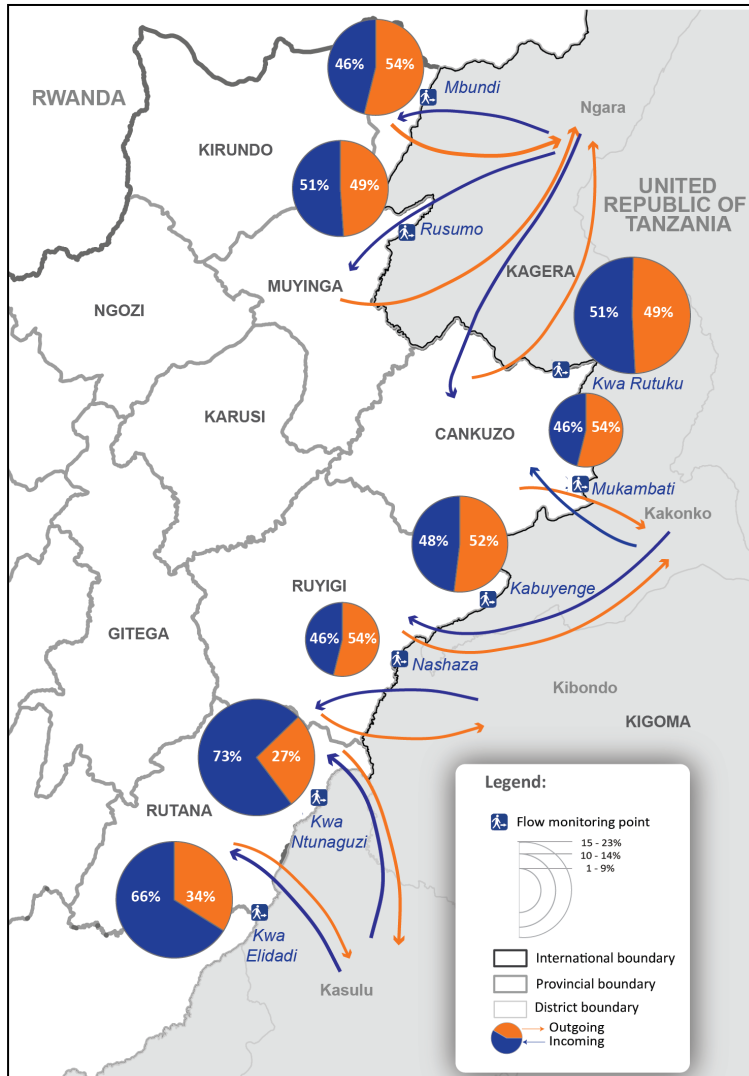


OVERVIEW AND TRENDS

This Dashboard provides an analysis of the trends in population mobility observed at eight (8) active flow monitoring points (FMPs) established at unofficial border crossings between the Burundi and United Republic of Tanzania border at Kwa Ntunaguzi, Kwa Rutuku, Kwa Elidadi, Rusumo, Kabuyenge, Mbundi, Nashaza and Mukambati. Over the reporting period, a total of 46,496 movements were observed at these points. This represents an increase of 8 per cent as compared to the daily average movements observed in October 2020. About 57 per cent of all movements were incoming and 43 per cent were outgoing, with most of the movements travelling towards the United Republic of Tanzania, also the main country of origin for incoming movements.

MOVEMENT ILLUSTRATIONS

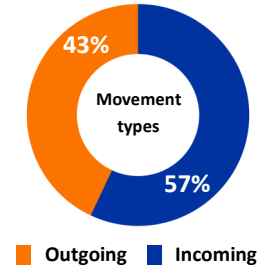


Map disclaimer: This map is for illustration purposes only. Names and boundaries on this map do not imply official endorsement or acceptance by IOM.

KEY FIGURES

46,496 Total movements observed

8 Flow Monitoring Points



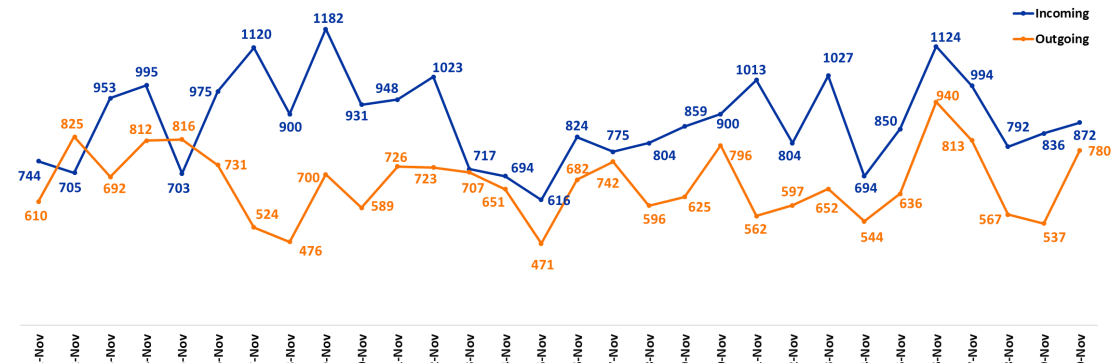
72% Burundi nationals

28% Tanzania nationals

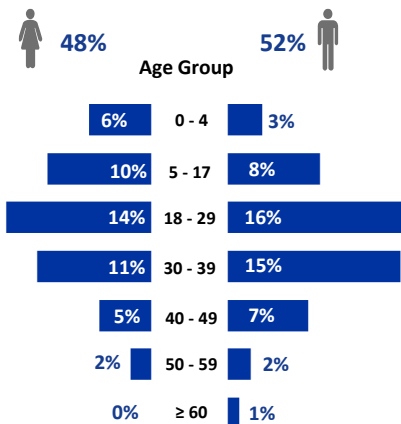
83% Movements with intended duration of a week or less

57% Movements with small boats

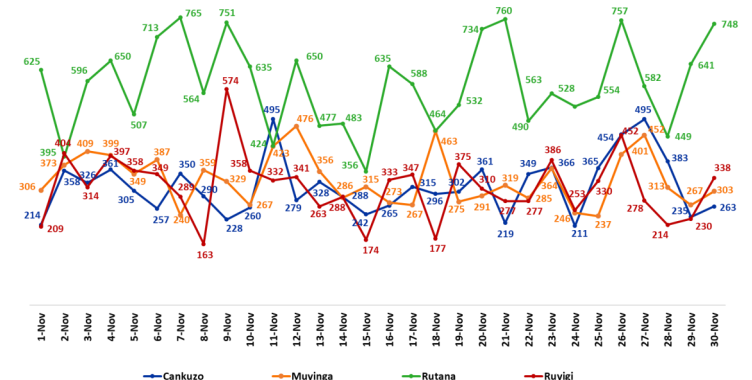
TYPE OF DAILY MOVEMENT OBSERVED DURING THE REPORTING PERIOD



DEMOGRAPHIC

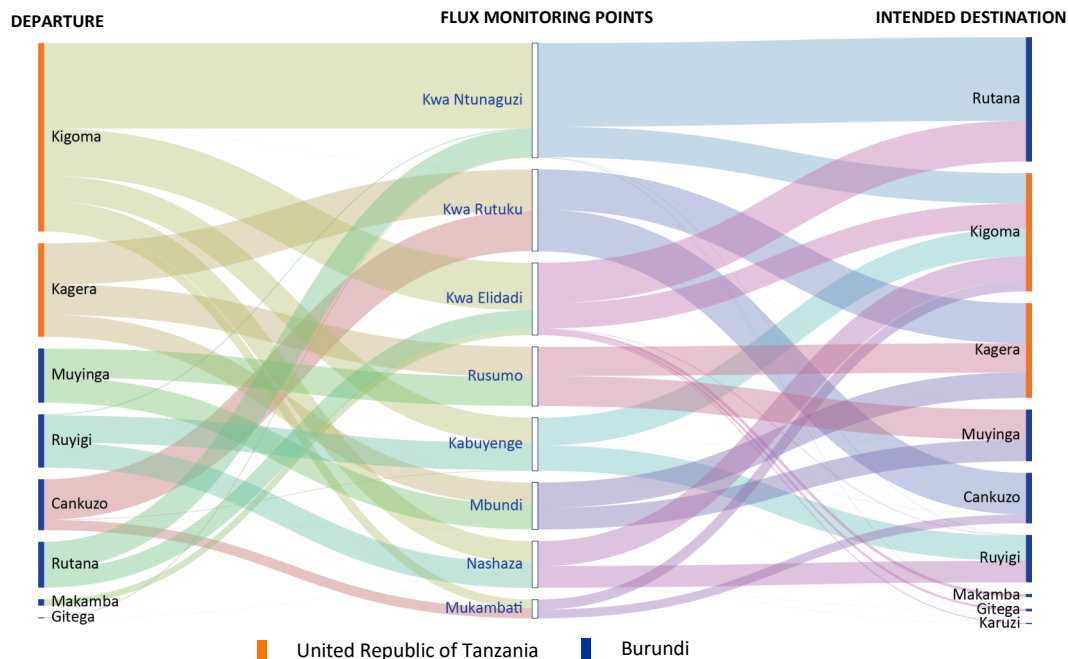


OBSERVATIONS BY PROVINCE OF FMP DURING THE REPORTING PERIOD



Dashboard disclaimer: Percentages are rounded to the nearest percent.

MIGRATION FLOWS



HIGHLIGHTS

Movements: Of the 46,496 movements, the largest proportion of travellers were between 18 and 39 years of age (57%). Most of the outgoing movements were headed to the United Republic of Tanzania. Over 57 per cent of the movements were made through small boats at water crossings.

Duration of the movements: The majority of the movements (83%) were of a temporary nature, lasting less than a day to a week.

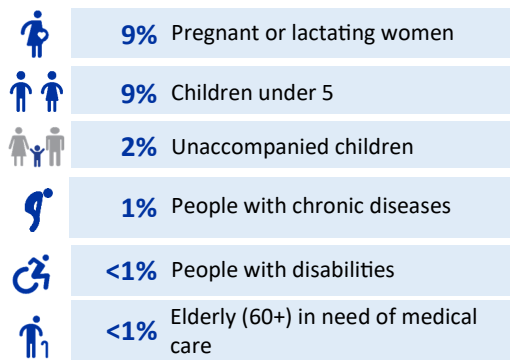
Reasons for movement: The majority of the movements was driven by economic reasons (60.3%), though most of those lasted for one day or less (75%), while only 3 per cent were of a duration of three months or longer. Other movements were driven by the need to return to habitual residence (19.5%), family-related reasons (6.5%), purchase of good for personal consumption (5.2%), seasonal movements (4.4%), other reasons (2.3%) and health care related reasons (1.8%).

Flow Monitoring Points (FMPs): About 23 per cent of movements were tracked through Kwa Ntunaguzi FMP, 17 per cent of movements were tracked through Kwa Rutuku FMP, 15 per cent of movements were tracked through Kwa Elidadi FMP, 12 per cent of movements through Rusumo FMP, 11 per cent through Kabuyenge FMP, 10 per cent through Mbundi FMP, 9 per cent through Nashaza FMP and the remaining 4 per cent through Mukambati FMP.

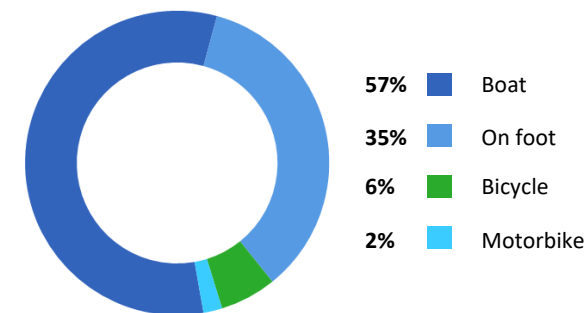
REASONS FOR MOVING

Reasons for movement	Outgoing (%)	Incoming (%)	Grand Total (%)
Economic reasons	63.9%	57.5%	60.3%
Return	10.8%	26.1%	19.5%
Family Visit	7.5%	5.8%	6.5%
Buy goods for personal consumption	4.6%	5.8%	5.2%
Seasonal migration	9.7%	0.4%	4.4%
Others	2.6%	2.0%	2.3%
Health care	0.9%	2.4%	1.8%
Grand Total (%)	43%	57%	100%

VULNERABILITY PROFILE



MEANS OF TRANSPORT



Methodology: Flow Monitoring is a component of the DTM methodology aimed at providing information on population movements at points of transit. Flow Monitoring provides information on trends on key variables at locations of high mobility.

Data collection is carried out at eight Flow Monitoring Points (FMPs) located at unofficial Points of Entry (PoEs) in the provinces of Cankuzo and Muyinga since October 2018 and in the Provinces of Rutana and Ruyigi since November 2018. The movements are observed and recorded seven days per week (from 6 am to 6 pm) at Flow Monitoring Points and enumerators conduct interviews with migrants to collect information on migration flows. Data in this report covers the period between 1 and 30 November 2020. Short-term movements for market visits are not considered during observations.

Dashboard disclaimer: Percentages are rounded to the nearest percent.