



EMERGENCY TRACKING TOOL (ETT)

DTM Emergency Tracking Tool (ETT) is deployed to track and provide up-to-date information on sudden displacement and other population movements

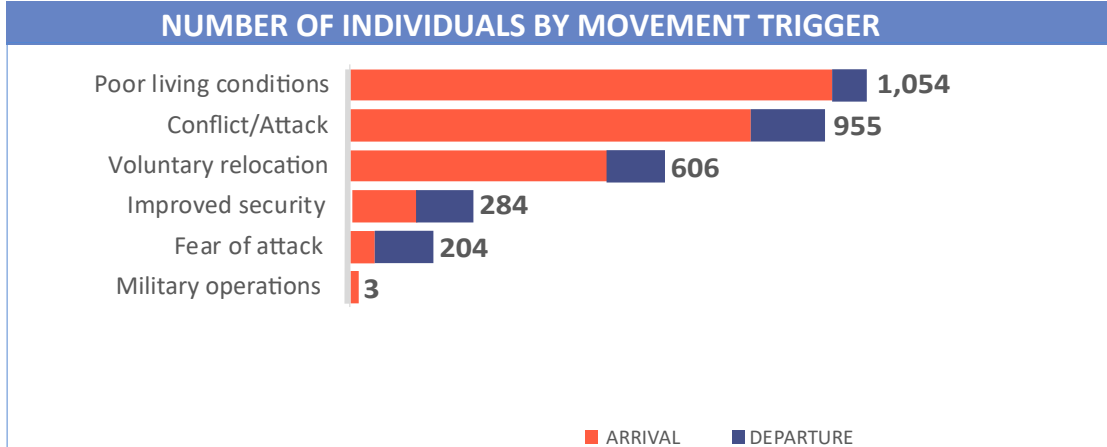
ETT Report: No. 205 | 04 - 10 January 2021

MOVEMENTS	NEW ARRIVAL SCREENING BY NUTRITION PARTNERS
<p>Arrivals: 2,428 individuals</p> <p>Departures: 678 individuals</p>	<p>283 Children (6-59 months) screened for malnutrition</p> <p>MUAC category of screened children</p> <p>Green: 267 Yellow: 12 Red: 4</p>

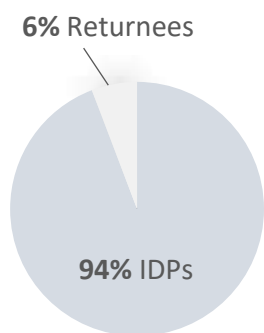
A total of 3,106 movements were recorded, comprising 2,428 arrivals and 678 departures, between 4 and 10 January 2021. Arrivals were recorded at locations in Askira/Uba, Bama, Biu, Dikwa, Gwoza, Mobbar and Monguno Local Government Areas (LGAs) of the most-affected Nigerian State of Borno. Arrivals were also recorded in Fufore, Girei, Gombi, Hong, Lamurde, Maiha, Michika, Mubi North, Mubi South, Numan, Song, Yola North and Yola South LGAs of the state of Adamawa.

Departures were recorded in Askira/Uba, Damboa, Hawul and Kala/Balge LGAs of Borno; Fufore, Gombi, Lamurde, Maiha, Michika, Mubi North, Mubi South, Numan, Song and Yola North LGAs of Adamawa.

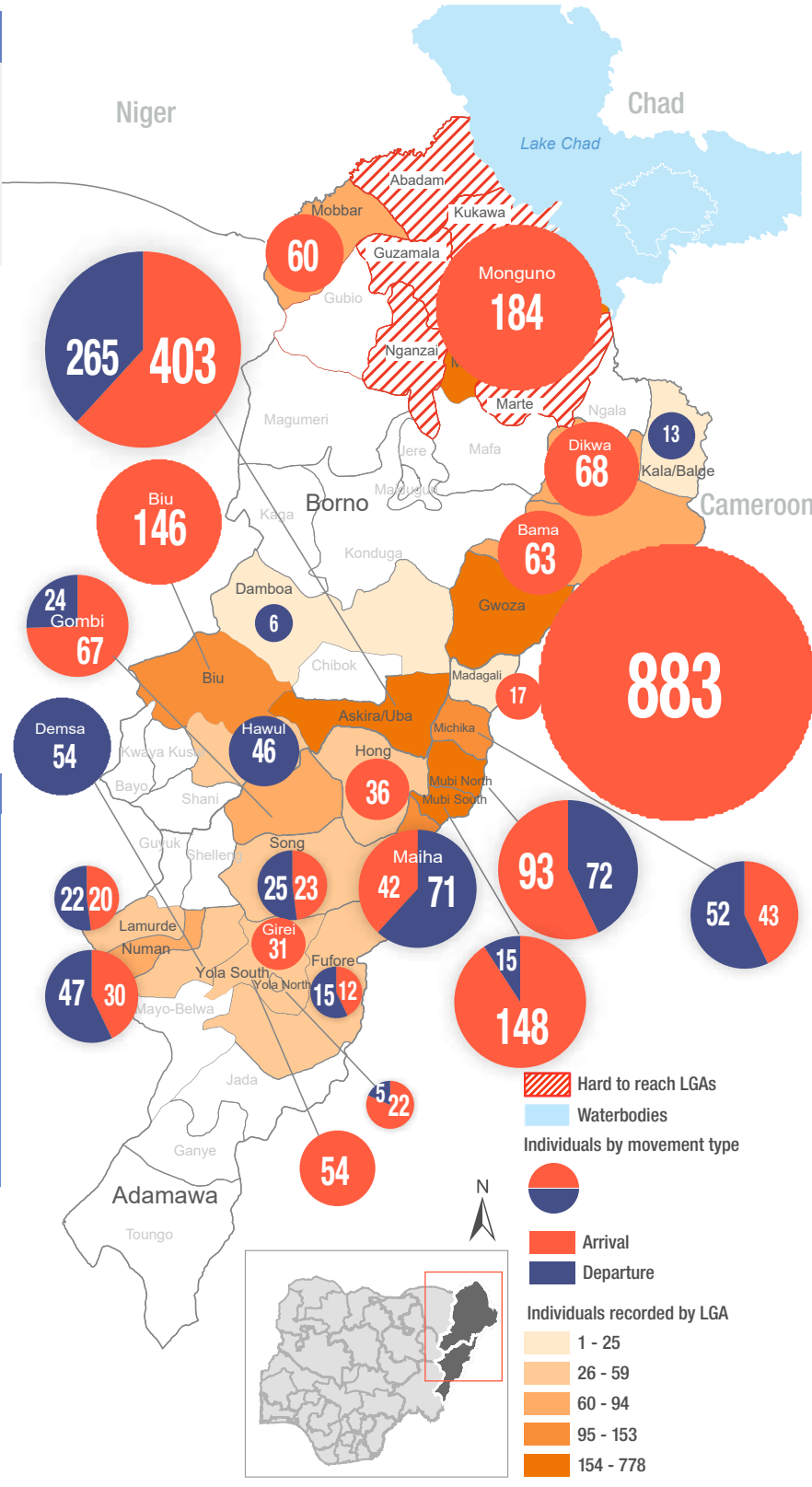
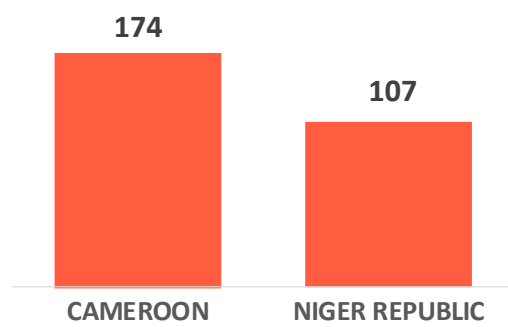
ETT assessments identified the following movement triggers: poor living conditions (33.9%), conflict/attack (30.7%), voluntary relocation (19.5%), improved security (9.1%), fear of attack (6.6%) and military operations (0.1%).



Affected Population



Arrivals from Neighboring Countries



* Movements in Kala/Balge were captured by ETT outreach staff in the LGA

SUMMARY OF MAJOR MOVEMENTS

Gwoza: 883 arrivals were recorded in Gwoza LGA of Borno state. The arrivals included 325 from Yola North and 43 from Mubi North of Adamawa state, 239 from Abuja Municipal Area Council of the Federal Capital Territory, 147 from Marwa region in Cameroon and 129 from Gwoza LGA of Borno state. All movements recorded were due to poor living conditions.

Askira/Uba: 403 arrivals and 265 departures were recorded in Askira/Uba LGA of Borno state. The arrivals included 371 from Askira/Uba, 29 from Chibok LGA of Borno state and 3 from Michika LGA of Adamawa state. The departures included 103 to Askira/Uba LGA, 16 to Gwoza LGAs of Borno state, 59 to Mubi North, 43 to Mubi South, 18 to Hong, 17 to Gombi and 9 to Girei LGAs of Adamawa state. 73 per cent of the movements recorded were as a result of conflict/attack, 19 per cent triggered by fear of attack, 4 per cent by improved security while the remaining 2 per cent relocated voluntarily.

Monguno: 184 arrivals were recorded in Monguno LGA of Borno state. The arrivals included 65 from Guzamala, 62 from Kukawa, 10 from Nganzai LGAs of Borno state and 47 from Diffa region in Niger Republic. 69 per cent of the movements were triggered by conflict/attack and 31 per cent relocated as a result of poor living conditions.

Mubi North: 93 arrivals and 72 departures were recorded in Mubi North LGA of Adamawa state. The arrivals included 59 from Askira/Uba LGA of Borno state, 21 from Madagali and 13 from Mubi South LGAs of Adamawa state. Meanwhile, departures recorded were 50 to Gombi, 12 to Fufore and 10 to Madagali LGAs of Adamawa state. 36 per cent relocated due to conflict/attack, 34 per cent relocated voluntarily and the remaining 30 per cent relocated as a result of improved security.

NEW ARRIVAL MALNUTRITION SCREENING SUMMARY (CHILDREN 6-59 MONTHS)

An exhaustive nutrition screening using mid-upper arm circumference (MUAC) and Oedema for acute malnutrition was conducted by Sector partners for 283 children of 6-59 months. Of the 283 children screened, the MUAC reading was 4 children (from accessible areas) in the Red category, 12 were in the Yellow category and 267 were measured in the Green category. No case of Oedema was reported in the 4 LGAs that we received reports from.

The results also include 60 children from neighboring countries (1 in Bama, 39 in Gwoza, 16 in Mobbar and 4 in Ngala). Of all the 60 children measured, 1 child was recorded in the Red category, 53 in the Green category and the remaining 6 in the Yellow category. All children found with acute malnutrition have been admitted for treatment. Please note, the data presented are not surveillance results and should be interpreted with caution.

LGA	MUAC Categories						Total
	Green (>12.5cm)		Yellow (11.5cm - 12.5cm)		Red (<11.5cm)		
	Inaccessible	Accessible	Inaccessible	Accessible	Inaccessible	Accessible	
Bama	4	7	1	0	0	0	12
Gwoza	36	190	1	6	0	4	237
Mobbar	0	13	0	3	0	0	16
Ngala	3	14	0	1	0	3	18
Total	43	224	2	10	0	4	283

■ Nourished

■ Moderate Acute Malnutrition (MAM)

■ Severe Acute Malnutrition (SAM)

Please note, the data presented are not surveillance results and should be interpreted with caution.

Table 1. Details of movements by locations of assessment and locations of arrival / departure - only movements with at least 24 persons are listed below

Tracking location			Movement location			ARRIVAL	DEPARTURE	GRAND TOTAL
STATE	LGA	WARD	STATE	LGA	WARD			
ADAMAWA	GOMBI	GARKIDA	ADAMAWA	MUBI NORTH	DIGIL	50	-	50
		GOMBI SOUTH	BORNO	HAWUL	SHAFFA	-	24	24
	MAIHA	SORAU A	ADAMAWA	GOMBI	GARKIDA	-	28	28
				MADAGALI	GULAK	34	-	34
	MICHIKA	MADZI	ADAMAWA	YOLA SOUTH	BOLE YOLDE PATE	-	27	27
		MINKISI WURO NGIKI		GOMBI	GOMBI NORTH	31	-	31
		TUMBARA / NGABILI		MUBI NORTH	BETSO	-	25	25
	MUBI NORTH	DIGIL	ADAMAWA	GOMBI	GARKIDA	-	50	50
		LOKUWA	BORNO	ASKIRA/UBA	WAMDEO / GIWI	59	-	59
	MUBI SOUTH	GUDE	BORNO	GWOZA	GWOZA WAKANE/BULABULIN	38	-	38
		LAMORDE	ADAMAWA	MADAGALI	GULAK	47	-	47
			BORNO	ASKIRA/UBA	WAMDEO / GIWI	43	-	43
BORNO	ASKIRA/UBA	HAUSARI/ZADAWA	BORNO	CHIBOK	MBLALA	29	-	29
		HUSARA/TAMPUL		UBA	-	103	103	
		UBA		ASKIRA/UBA	209	-	209	
		UVU/UDA		WAMDEO / GIWI	162	-	162	
		WAMDEO / GIWI		ADAMAWA	MUBI NORTH	LOKUWA	-	59
	BAMA	BUDUWA / BULA CHIRABE	CAMEROON	MARWA	MORA	27	-	27
		SHEHURI / HAUSARI / MAIRI	BORNO	BAMA	BUDUWA / BULA CHIRABE	24	-	24
	BIU	DUGJA	BORNO	DAMBOA	MULGWAI	41	-	41
		JEGOL		BIU	ANGUWAN CHIBOK	42	-	42
		ZARAWUYAKU		HAWUL	KWAJAJFFA/HANG	48	-	48
	DIKWA	DIKWA	LAGOS	IKEJA	IKEJA	29	-	29
	GWOZA	GWOZA TOWN GADAMAYO	ADAMAWA	MUBI NORTH	LOKUWA	43	-	43
		GWOZA WAKANE/BULABULIN		YOLA NORTH	DAWARE	216	-	216
		PULKA/BOKKO	BORNO	GWOZA	DURE/WALA/WARABE	129	-	129
			CAMEROON	MARWA	MAYO TSANGYA	147	-	147
	GWOZA	PULKA/BOKKO	ABUJA	AMAC	WASSA	239	-	239
	HAWUL	KWAJAJFFA HARRANG	BORNO	ASKIRA/UBA	NGULDE	-	24	24
	MOBBAR	DAMASAK	NIGER REPUBLIC	DIFFA	SHETTIMARI	60	-	60
	MONGUNO	MONGUNO	BORNO	GUZAMALA	GUDUMBALI	65	-	65
KUKAWA				KUKAWA	62	-	62	
NIGER REPUBLIC			DIFFA	DIFFA	47	-	47	

The depiction and use of boundaries, geographic names, and related data shown on maps and included in this report are not warranted to be error free nor do they imply judgment on the legal status of any territory, or any endorsement or acceptance of such boundaries by IOM.

When quoting, paraphrasing or in anyway using the information mentioned in this report, the source needs to be stated appropriately as follows: "Source: International Organization for Migration [month, year], Displacement Tracking Matrix (DTM)".

* MUAC data is provided by UNICEF

For more information or to report an alert, please contact:

Henry Kwenin, DTM Project Coordinator: hkwenin@iom.int | +234 903 8852 524

Dave Bercasio, Emergency Coordinator: dbercasio@iom.int | +234 907 5070 001

DTM information products: <http://dtm.iom.int/nigeria>

