



# EMERGENCY TRACKING TOOL (ETT)

DTM Emergency Tracking Tool (ETT) is deployed to track and provide up-to-date information on sudden displacement and other population movements

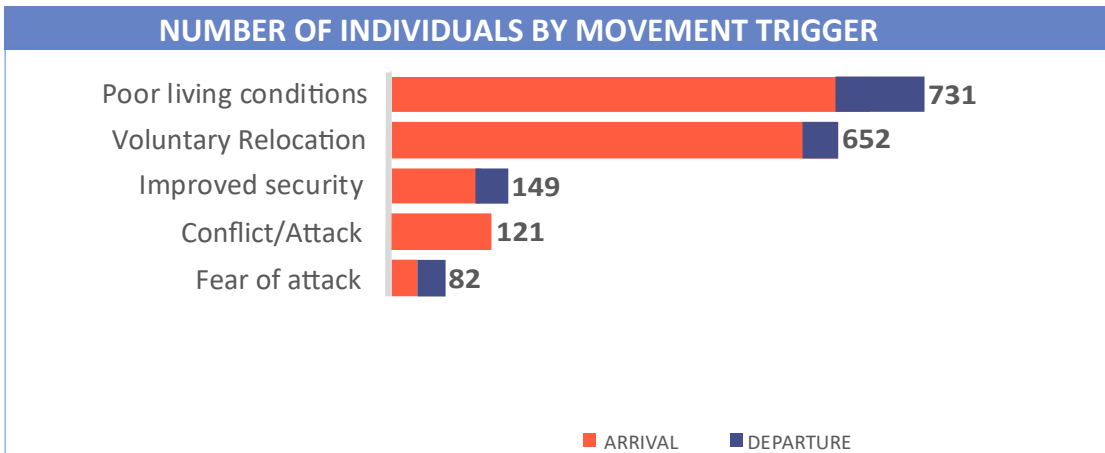
## ETT Report: No. 204 | 28 December 2020 - 03 January 2021

MOVEMENTS	NEW ARRIVAL SCREENING BY NUTRITION PARTNERS
<p><b>Arrivals:</b> 1,521 individuals</p> <p><b>Departures:</b> 214 individuals</p>	<p><b>236</b> Children (6-59 months) screened for malnutrition</p> <p><b>MUAC category of screened children</b></p> <p>Green: 202    Yellow: 26    Red: 8</p>

A total of 1,735 movements were recorded, comprising 1,521 arrivals and 214 departures, between 28 December 2020 and 3 January 2021. Arrivals were recorded at locations in Askira/Uba, Bama, Biu, Dikwa, Gwoza, Mobbar and Ngala Local Government Areas (LGAs) of the most-affected Nigerian State of Borno. Arrivals were also recorded in Fufore, Girei, Gombi, Hong, Maiha, Michika, Mubi North, Mubi South, Numan, Yola North and Yola South LGAs of the state of Adamawa.

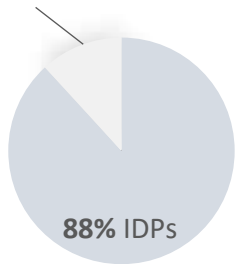
Departures were recorded in Kala/Balge and Madagali LGAs of Borno; Gombi, Lamurde, Maiha, Michika, Mubi North, Mubi South, Numan, Song and Yola South LGAs of Adamawa.

ETT assessments identified the following movement triggers: poor living conditions (42.1%), voluntary relocation (37.6%), improved security (8.6%), conflict/attack (7.0%) and fear of attack (4.7%).

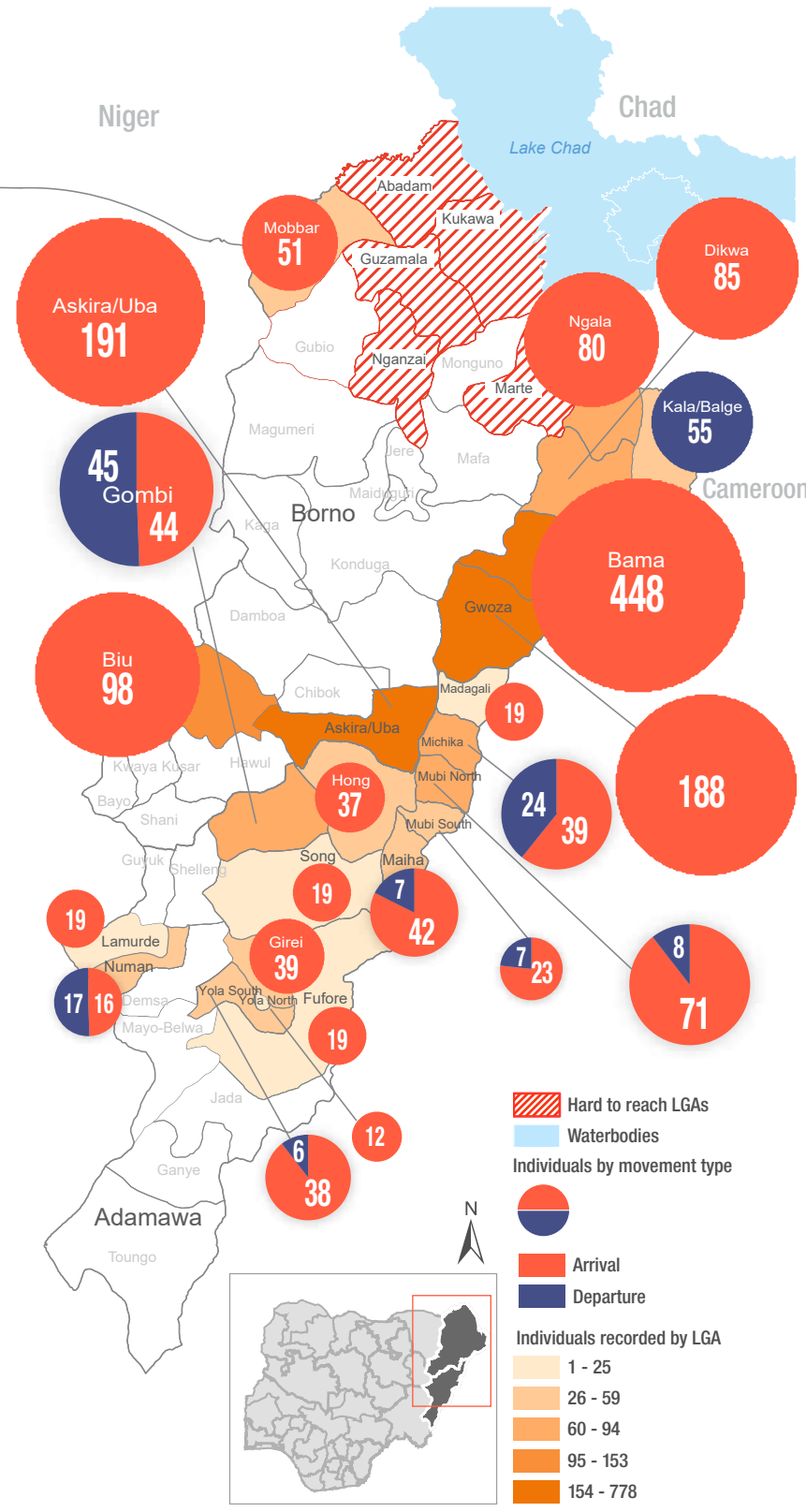
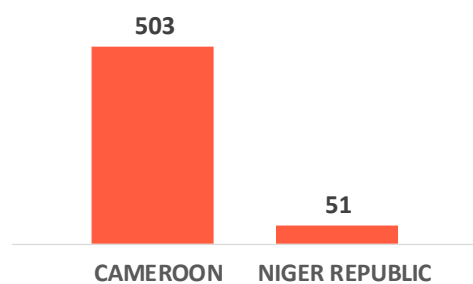


### Affected Population

12% Returnees



### Arrivals from Neighboring Countries



\* Movements in Kala/Balge were captured by ETT outreach staff in the LGA

## SUMMARY OF MAJOR MOVEMENTS

**Bama:** 448 arrivals were recorded in Bama LGA of Borno state. All arrivals were from Marwa region in Cameroon. 93 per cent of the movements recorded were due to poor living conditions and 7 per cent were as a result of voluntary relocation.

**Askira/Uba:** 191 arrivals were recorded in Askira/Uba LGA of Borno state. The arrivals included 128 from Anka LGA of Zamfara state, 41 from Askira/Uba LGA of Borno state and 9 from Madagali, 8 from Hong and 5 from Girei LGAs of Adamawa state. 67 per cent relocated voluntarily, 26 per cent of the movements recorded were as a result of improved security and 7 per cent of the movements recorded were triggered by poor living conditions.

**Gwoza:** 188 arrivals were recorded in Gwoza LGA of Borno state. The arrivals included 55 from Marwa region in Cameroon, 54 from Hong, 53 from Fufore and 12 from Yola North LGAs of Adamawa state and 14 from Bama LGA of Borno state. All of the movements recorded were triggered by poor living conditions.

**Biu:** 98 arrivals were recorded in Biu LGA of Borno state. All arrivals were from Hawul LGA of Borno state. All movements recorded in Biu LGA were as a result of conflict/attack.

## NEW ARRIVAL MALNUTRITION SCREENING SUMMARY (CHILDREN 6-59 MONTHS)

An exhaustive nutrition screening using mid-upper arm circumference (MUAC) and Oedema for acute malnutrition was conducted by Sector partners for 236 children of 6-59 months. Of the 236 children screened, the MUAC reading was 8 (1 from in-accessible and 7 from accessible) in the Red category, 26 were in the Yellow category and 202 were measured in the Green category. No case of Oedema was reported in the 5 LGAs that we received reports from.

The results also include 126 children from neighboring countries (105 in Bama, 6 in Gwoza and 15 in Mobbar). Of all the 126 children measured, 3 were recorded in the Red category, 109 in the Green category and the remaining 14 in the Yellow category. All children found with acute malnutrition have been admitted for treatment. Please note, the data presented are not surveillance results and should be interpreted with caution.

LGA	MUAC Categories						Total
	Green (>12.5cm)		Yellow (11.5cm - 12.5cm)		Red (<11.5cm)		
	Inaccessible	Accessible	Inaccessible	Accessible	Inaccessible	Accessible	
Bama	5	99	0	8	1	3	116
Dikwa	0	26	0	7	0	2	35
Gwoza	2	39	0	3	0	0	44
Mobbar	0	9	0	6	0	0	15
Ngala	0	22	0	2	0	2	26
<b>Total</b>	<b>7</b>	<b>195</b>	<b>0</b>	<b>26</b>	<b>1</b>	<b>7</b>	<b>236</b>

■ Nourished     
 ■ Moderate Acute Malnutrition (MAM)     
 ■ Severe Acute Malnutrition (SAM)

*Please note, the data presented are not surveillance results and should be interpreted with caution.*

**Table 1. Details of movements by locations of assessment and locations of arrival / departure - only movements with at least 14 persons are listed below**

Tracking location			Movement location			ARRIVAL	DEPARTURE	GRAND TOTAL	
STATE	LGA	WARD	STATE	LGA	WARD				
ADAMAWA	FUFORE	PARIYA	ADAMAWA	GIREI	MODIRE VINKLANG	19	-	19	
	GIREI	GIREI I	ADAMAWA	GOMBI	GARKIDA	20	-	20	
	GOMBI	GARKIDA		ADAMAWA	MADAGALI	SABON GARI	19	-	19
				ADAMAWA	GIREI	GIREI I	-	22	22
				ADAMAWA	MUBI NORTH	LOKUWA	-	23	23
				BORNO	MUBI SOUTH	NASARAWO	15	-	15
	HONG	BANGSHIKA	ADAMAWA	HAWUL	KWAJAJFFA	29	-	29	
	LAMURDE	WADUKU	ADAMAWA	GOMBI	GARKIDA	37	-	37	
	MAIHA	SORAU A	ADAMAWA	GUYUK	DUMNA	-	15	15	
	MICHIKA	SORAU A	ADAMAWA	SONG	SONG GARI	16	-	16	
		MODA DLAKA TUMBAR ANGABULI	ADAMAWA	GOMBI	GABUN	-	24	24	
	MUBI NORTH	LOKUWA	ADAMAWA	MAIHA	TAMBAJAM	14	-	14	
		SABON LAYI	ADAMAWA	GOMBI	GARKIDA	23	-	23	
	MUBI SOUTH	GUDE	BORNO	MADAGALI	GULAK	15	-	15	
NUMAN	SABON PEGI	BORNO	GWOZA	LIMANKARA	23	-	23		
YOLA SOUTH	NAMTARI	ADAMAWA	SONG	SONG WAJE	16	-	16		
BORNO	ASKIRA/UBA	HUSARA/TAMPUL	ADAMAWA	GOMBI	GARKIDA	14	-	14	
		MUSSA	ZAMAFRA	ANKA	BAGEGA	128	-	128	
	BAMA	BUDUWA / BULA CHIRABE	BORNO	ASKIRA UBA	GIWI/WOMDEO	33	-	33	
		SHEHURI / HAUSARI / MAIRI	CAMEROON	MARWA	MORA	29	-	29	
	BIU	YAWI	BORNO	HAWUL	KWAJAJFFA	49	-	49	
					AZERA	49	-	49	
	DIKWA	DIKWA	LAGOS	APAPA	IKOYI	17	-	17	
			ONDO	AKOKO NORTH E	OKENE	68	-	68	
	GWOZA	GWOZA WAKANE/BULABULIN	ADAMAWA	FUFORE	DAWARE	53	-	53	
			ADAMAWA	HONG	GARAHA	54	-	54	
			CAMEROON	MARWA	MAYO TSANGYA	27	-	27	
			BORNO	BAMA	SABSABWA/SOYE/BULONGU	14	-	14	
			CAMEROON	MARWA	MORA	16	-	16	
	RANN "A"	BORNO	NGALA	NGALA WARD	-	55	55		
MADAGALI	MAISANDARI	BORNO	BAMA	BUDUWA / BULA CHIRABE	-	15	15		
MOBBAR	DAMASAK	NIGER REPUBLIC	DIFFA	SHETTIMARI	51	-	51		
NGALA	NGALA WARD	BORNO	KALA BALGE	RANN "A"	80	-	80		

The depiction and use of boundaries, geographic names, and related data shown on maps and included in this report are not warranted to be error free nor do they imply judgment on the legal status of any territory, or any endorsement or acceptance of such boundaries by IOM.

When quoting, paraphrasing or in anyway using the information mentioned in this report, the source needs to be stated appropriately as follows: "Source: International Organization for Migration [month, year], Displacement Tracking Matrix (DTM)".

\* MUAC data is provided by UNICEF

For more information or to report an alert, please contact:

Henry Kwenin, DTM Project Coordinator: [hkwenin@iom.int](mailto:hkwenin@iom.int) | +234 903 8852 524

Dave Bercasio, Emergency Coordinator: [dbercasio@iom.int](mailto:dbercasio@iom.int) | +234 907 5070 001

DTM information products: <http://dtm.iom.int/nigeria>

