



EMERGENCY TRACKING TOOL (ETT)

DTM Emergency Tracking Tool (ETT) is deployed to track and provide up-to-date information on sudden displacement and other population movements

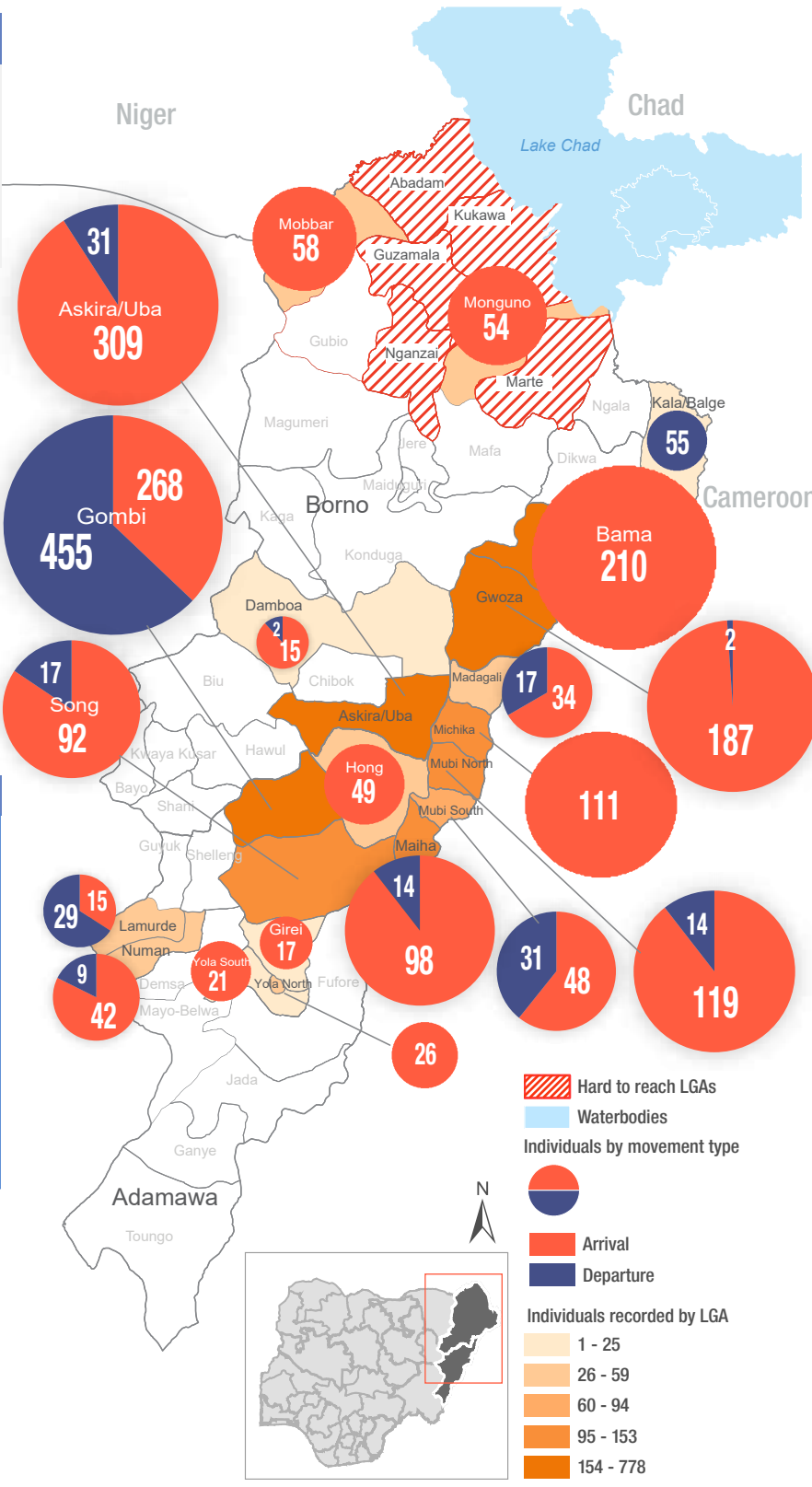
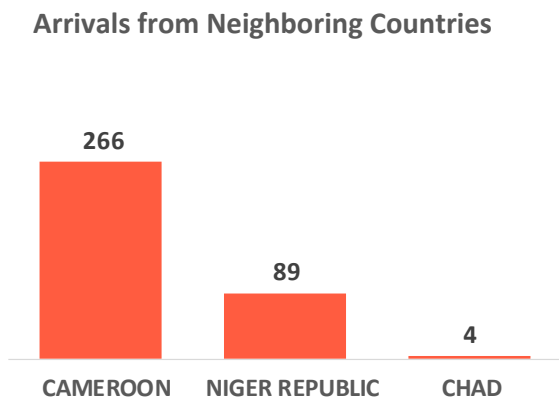
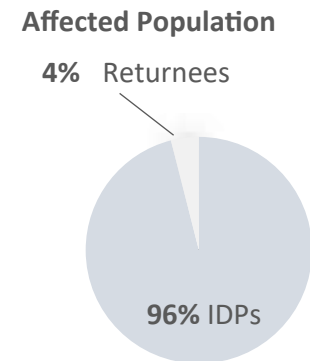
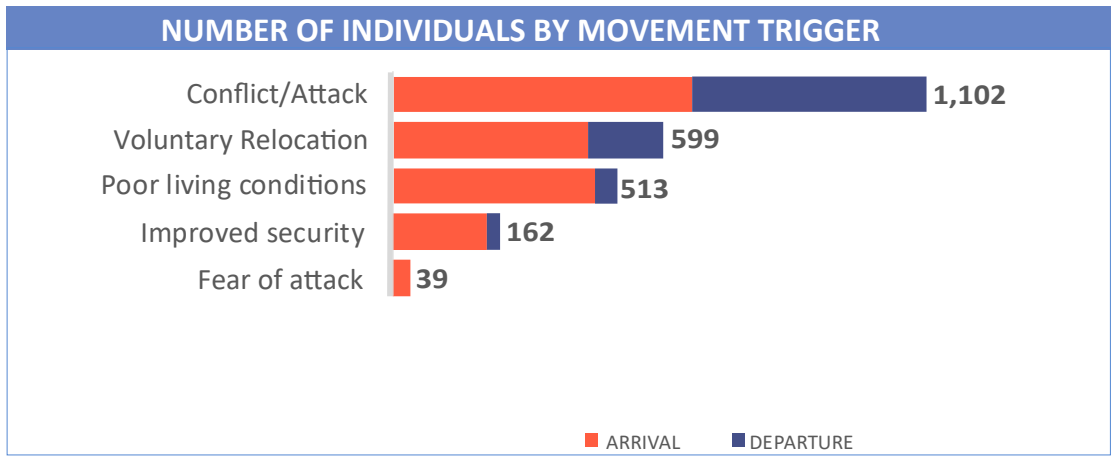
ETT Report: No. 203 | 21 - 27 December 2020

MOVEMENTS	NEW ARRIVAL SCREENING BY NUTRITION PARTNERS
<p>Arrivals: 1,756 individuals</p> <p>Departures: 659 individuals</p>	<p>127 Children (6-59 months) screened for malnutrition</p> <p>MUAC category of screened children</p> <p>Green: 120 Yellow: 7 Red: 0</p>

A total of 2,415 movements were recorded, comprising 1,756 arrivals and 659 departures, between 21 and 27 December 2020. Arrivals were recorded at locations in Askira/Uba, Bama, Damboa, Gwoza, Mobbar and Monguno Local Government Areas (LGAs) of the most-affected Nigerian State of Borno. Arrivals were also recorded in Girei, Gombi, Hong, Lamurde, Madagali, Maiha, Michika, Mubi North, Mubi South, Numan, Song, Yola North and Yola South LGAs of the state of Adamawa.

Departures were recorded in Askira/Uba, Damboa, Gwoza and Kala/Balge LGAs of Borno; Girei, Gombi, Lamurde, Madagali, Maiha, Mubi North, Mubi South, Numan and Song LGAs of Adamawa.

ETT assessments identified the following movement triggers: conflict/attack (45.7%), voluntary relocation (24.8%), poor living conditions (21.2%), improved security (6.7%) and fear of attack (1.6%).



SUMMARY OF MAJOR MOVEMENTS

Gombi: 268 arrivals and 455 departures were recorded in Gombi LGA of Adamawa state. The arrivals included 184 from Hawul, 74 from Gombi and 10 from Numan LGAs of Adamawa state. The departures included 165 to Gombi, 93 to Hong, 88 to Hawul, 62 to Mubi North and 47 to Maiha LGAs of Adamawa state. 95 per cent relocated due to conflict/attack, 4 per cent relocated voluntarily and 1 per cent due to poor living conditions.

Askira/Uba: 309 arrivals and 31 departures were recorded in Askira/Uba LGA of Borno state. The arrivals included 120 from Mayo Belwa, 50 from Gombi and 17 from Madagali LGAs of Adamawa state, 61 from Chibok LGA of Borno state, 47 from Damaturu LGA of Yobe state and 14 from Kaduna North LGA of Kaduna state. All 31 departures recorded were to Gwoza LGA of Borno state. 48 per cent relocated voluntarily, 33 per cent due to conflict/attack and 19 per cent of the movements recorded were as a result of poor living conditions.

Bama: 210 arrivals were recorded in Bama LGA of Borno state. The arrivals included 206 from Marwa region in Cameroon, 3 from Maiduguri Metropolitan Council and 1 from Bama LGAs of Borno state. 86 per cent of the movements recorded were due to poor living conditions and 14 per cent were as a result of voluntary relocation.

Gwoza: 187 arrivals and 2 departures were recorded in Gwoza LGA of Borno state. The arrivals included 52 from Yola South, 39 from Maiha, 19 from Yola North and 14 from Girei LGAs of Adamawa state, 39 from Marwa region in Cameroon, 13 from Gwoza and 7 from Magumeri LGAs of Borno state and 4 from Abuja Municipal Area Council LGA of the Federal Capital Territory. 83 per cent of the movements recorded were triggered by poor living conditions, 16 per cent relocated in response to improved security and the remaining 1 per cent relocated voluntarily.

IOM's Emergency Tracking Tool (ETT) is deployed in Nigeria's northeastern states. Only Local Government Areas (LGAs) in which the IDP population changed since the latest DTM round of assessments are represented in this report. The data has been collected by DTM staff deployed at the locations listed and cross-checked with the partners present on the ground.

NEW ARRIVAL MALNUTRITION SCREENING SUMMARY (CHILDREN 6-59 MONTHS)

An exhaustive nutrition screening using mid-upper arm circumference (MUAC) and Oedema for acute malnutrition was conducted by Sector partners for 127 children of 6-59 months. Of the 127 children screened, the MUAC reading was none in the Red category, 7 were in the Yellow category and 120 were measured in the Green category. No case of Oedema was reported in the 3 LGAs that we received reports from.

The results also include 81 children from neighboring countries (59 in Bama, 13 in Gwoza and 9 in Mobbar). Of all the 81 children measured, none was recorded in the Red category, 76 in the Green category and the remaining 5 in the Yellow category. All children found with acute malnutrition have been admitted for treatment. Please note, the data presented are not surveillance results and should be interpreted with caution.

LGA	MUAC Categories						Total
	Green (>12.5cm)		Yellow (11.5cm - 12.5cm)		Red (<11.5cm)		
	Inaccessible	Accessible	Inaccessible	Accessible	Inaccessible	Accessible	
Bama	0	59	0	5	0	0	64
Gwoza	0	52	0	1	0	0	53
Mobbar	1	8	0	1	0	0	10
Toral	1	119	0	7	0	0	127

■ Nourished
 ■ Moderate Acute Malnutrition (MAM)
 ■ Severe Acute Malnutrition (SAM)

Please note, the data presented are not surveillance results and should be interpreted with caution.

Table 1. Details of movements by locations of assessment and locations of arrival / departure - only movements with at least 21 persons are listed below

Tracking location			Movement location			ARRIVAL	DEPARTURE	GRAND TOTAL	
STATE	LGA	WARD	STATE	LGA	WARD				
ADAMAWA	GOMBI	GAN'DA	BORNO	HAWUL	SHAFFA	25	-	25	
		GARKIDA	ADAMAWA	GOMBI	GOMBI NORTH		74	-	74
				GOMBI	GOMBI SOUTH		-	165	165
				HONG	MAYO LOPE		-	93	93
				MAIHA	SORAU A		-	47	47
				MUBI NORTH	DIGIL		-	35	35
					KWAJAJFFA		-	88	88
		GOMBI NORTH	BORNO	HAWUL	KWAJAJFFA		106	-	106
		GOMBI SOUTH			SHAFFA		53	-	53
		TAWA	ADAMAWA	MUBI NORTH	LOKUWA		-	27	27
	HONG	DAKSIRI	ADAMAWA	GOMBI	GARKIDA		49	-	49
	MAIHA	MAYONGULI	ADAMAWA	GOMBI	GARKIDA		41	-	41
		SORAU A					47	-	47
	MICHIKA	GARKIDA	ADAMAWA	MICHIKA	MICHIKA II		36	-	36
		MADZI		GOMBI	GA'ANDA		24	-	24
	MUBI NORTH	DIGIL	ADAMAWA	GOMBI	GARKIDA		73	-	73
		LOKUWA			TAWA		26	-	26
	MUBI SOUTH	NASARAWO	ADAMAWA	GOMBI	GARKIDA		34	-	34
SONG	SONG GARI	BORNO	HAWUL	SHAFFA		35	-	35	
	SONG WAJE	ADAMAWA	GOMBI	GARKIDA		44	-	44	
BORNO	ASKIRA/UBA	CHUL/RUMIRGO	BORNO	CHIBOK	GATAMARWA	42	-	42	
		GIWI/WOMDEO	ADAMAWA	NAMTARI	GONGOSHI	120	-	120	
		NGULDE		GOMBI	GARKIDA		50	-	50
		UBA	YOBE	DAMATURU	GWANGE		47	-	47
	BAMA	BUDUWA / BULA CHIRABE	BORNO	GWOZA	LIMAN KARA		-	31	31
		SHEHURI / HAUSARI / MAIRI	CAMEROON	MARWA	MAYO TSANGYA		26	-	26
	GWOZA	GWOZA WAKANE/BULABULIN	ADAMAWA	MAIHA	SORAU A		22	-	22
				YOLA SOUTH	MALKOHI		52	-	52
		PULKA/BOKKO	CAMEROON	MARWA	MORA		39	-	39
	KALA BALGE	RANN "A"	CAMEROON	MARWA	MAKARI		-	21	21
	MOBBAR	DAMASAK	NIGER REPUBLIC	DIFFA	SHETTIMARI		58	-	58
	MONGUNO	MONGUNO	NIGER REPUBLIC	DIFFA	SHETTIMARI		31	-	31

The depiction and use of boundaries, geographic names, and related data shown on maps and included in this report are not warranted to be error free nor do they imply judgment on the legal status of any territory, or any endorsement or acceptance of such boundaries by IOM.

When quoting, paraphrasing or in anyway using the information mentioned in this report, the source needs to be stated appropriately as follows: "Source: International Organization for Migration [month, year], Displacement Tracking Matrix (DTM)".

* MUAC data is provided by UNICEF

For more information or to report an alert, please contact:

Henry Kwenin, DTM Project Coordinator: hkwenin@iom.int | +234 903 8852 524

Dave Bercasio, Emergency Coordinator: dbercasio@iom.int | +234 907 5070 001

DTM information products: <http://dtm.iom.int/nigeria>

