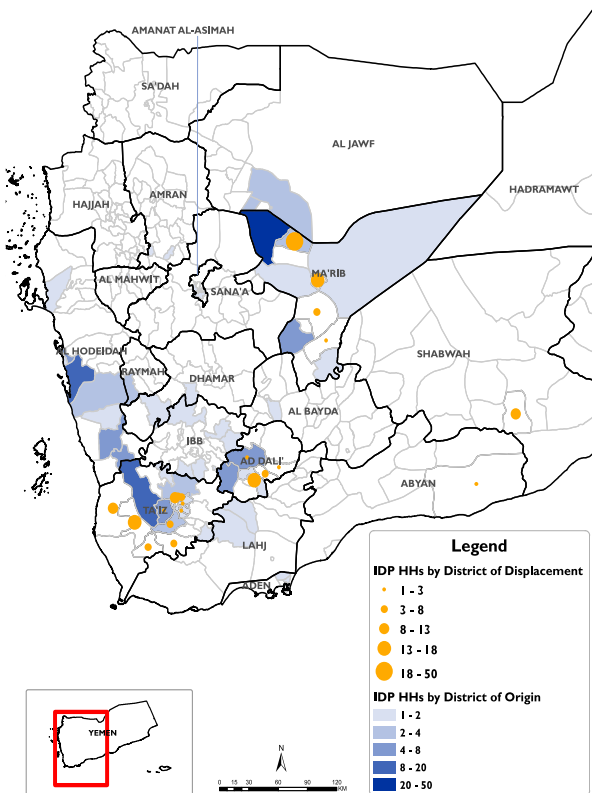


# RAPID DISPLACEMENT TRACKING (RDT)

Reporting Period : 29 Nov - 05 Dec 2020

Published on: 06 December 2020

Displaced Households by District of Displacement and Origin	Number of Displaced Households (IDP HHs) per Governorate			
	Governorate of Displacement	IDP HH Displaced during the week	IDP HH who left displaced location within the week	Total IDP HH
		29 Nov to 05 Dec	29 Nov to 05 Dec	01 Jan to 05 Dec
Hajjah	N/A	N/A	N/A	
Al Dhale'e	26	0	2,808	
Al Hudaydah	0	0	3,748	
Taizz	74	0	2,637	
Amanat Al Asimah	N/A	N/A	N/A	
Ibb	N/A	N/A	N/A	
Marib	74	0	12,711	
Amran	N/A	N/A	N/A	
Sana'a	N/A	N/A	N/A	
Shabwah	12	0	699	
Lahj	0	0	877	
Aden	0	0	165	
Sa'ada	N/A	N/A	N/A	
Abyan	2	0	808	
Dhamar	N/A	N/A	N/A	
Hadramaut	13	0	1,144	
Al Bayda	0	0	138	
Al Jawf	0	0	1,591	
Raymah	N/A	N/A	N/A	
Al Mahwit	N/A	N/A	N/A	
Socotra	0	0	26	
Al Maharah	3	0	578	
<b>Total</b>	<b>204</b>	<b>0</b>	<b>27,930</b>	



\*Based on data collected during 29 Nov - 05 Dec, 2020

### DISPLACEMENT TRACKING

DTM's Rapid Displacement Tracking (RDT) tool collects and reports on numbers of households forced to flee on a daily basis, allowing for regular reporting of new displacements in terms of numbers, geography and needs. In the first eleven months of 2020, conflict (82%) and natural disasters (13%) have resulted most of displacements, particularly in Marib, Al Hudaydah, Al Dhale'e, Tiaz, Al Jawf, and Hadramaut governorates. Economic conditions, Health, COVID-19 and other factors caused rest of 5% displacements.

### WEEKLY UPDATE

Between 29 November and 5 December, newly displaced households were recorded in Taizz (74 HH), Marib (74 HH), and Al Dhale'e (26 HH). Most of these displacements were the result of increased fighting in Marib (62 HH), Taizz (50 HH) and Al Hudaydah (33 HH).

### IDP HH WHO LEFT DISPLACED LOCATIONS

Since the beginning of 2020, DTM also identified other 1,319 previously displaced households who left the displaced location and moved to either their place of origin or some other displaced location.

**Displaced People**  
27,930 Households  
167,580 Individuals

\*Reported during Jan 01 - Dec 05, 2020

**UPDATE:** Additional 10 HHs were displaced between Nov 22 - Nov 28, 2020, and have been added in the total households.

**Returned People**  
1,750 Households  
10,500 Individuals

\*Reported during Jan 01 - Dec 05, 2020

