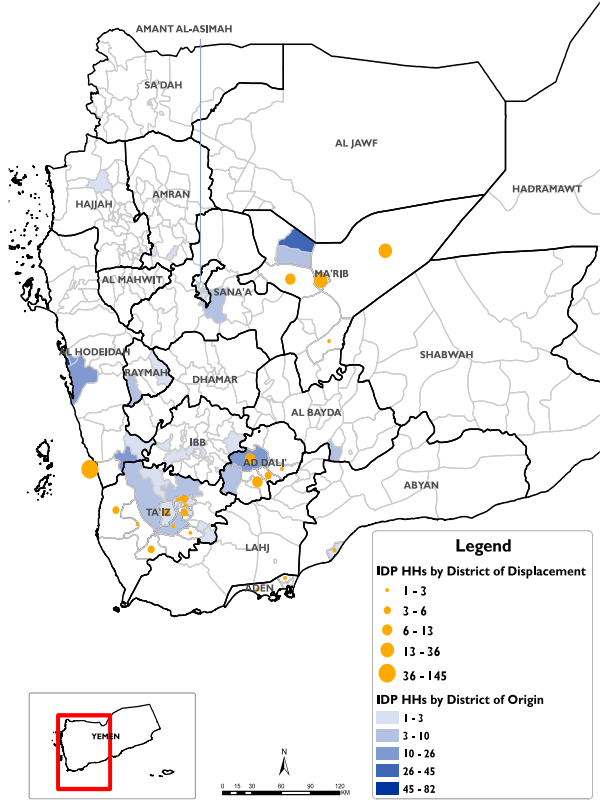


RAPID DISPLACEMENT TRACKING (RDT)

Reporting Period : 22 - 28 Nov 2020

Published on: 29 November 2020

Displaced Households by District of Displacement and Origin	Number of Displaced Households (IDP HHs) per Governorate			
	Governorate of Displacement	IDP HH Displaced during the week	IDP HH who left displaced location within the week	Total IDP HH
		22 to 28 Nov	22 to 28 Nov	01 Jan to 28 Nov
Hajjah	N/A	N/A	N/A	
Al Dhale'e	31	0	2,774	
Al Hudaydah	145	0	3,748	
Taizz	39	1	2,561	
Amanat Al Asimah	N/A	N/A	N/A	
Ibb	N/A	N/A	N/A	
Marib	74	0	12,637	
Amran	N/A	N/A	N/A	
Sana'a	N/A	N/A	N/A	
Shabwah	0	0	687	
Lahj	0	0	877	
Aden	2	0	165	
Sa'ada	N/A	N/A	N/A	
Abyan	2	0	806	
Dhamar	N/A	N/A	N/A	
Hadramaut	0	0	1,131	
Al Bayda	0	0	138	
Al Jawf	0	0	1,591	
Raymah	N/A	N/A	N/A	
Al Mahwit	N/A	N/A	N/A	
Socotra	26	0	26	
Al Maharah	0	0	575	
Total	319	1	27,716	



*Based on data collected during 22 - 28 Nov, 2020

DISPLACEMENT TRACKING


DTM's Rapid Displacement Tracking (RDT) tool collects and reports on numbers of households forced to flee on a daily basis, allowing for regular reporting of new displacements in terms of numbers, geography and needs. In the first ten months of 2020, conflict (82%) and natural disasters (13%) have resulted most of displacements, particularly in Marib, Al Jawf, Al Hudaydah, and Al Dhale'e governorates. Economic conditions, Health, COVID-19 and other factors caused rest of 5% displacements.

WEEKLY UPDATE

Between 22 and 28 November, newly displaced households were recorded in Al Hudaydah (145 HH), Marib (74 HH), and Taizz (39 HH). Most of these displacements were the result of increased fighting in Al Hudaydah (148 HH), Marib (55 HH) and Taizz (29 HH), and because of floods and heavy rains in Socotra (23 HH).


IDP HH WHO LEFT DISPLACED LOCATIONS

Since the beginning of 2020, DTM also identified other **1,319** previously displaced households who left the displaced location and moved to either their place of origin or some other displaced location.

Displaced People
 **27,716** Households
166,296 Individuals

*Reported during Jan 01 - Nov 28, 2020

UPDATE: Additional **33** HHs were displaced between Nov 15 - Nov 21, 2020, and have been added in the total households.

Returned People
 **1,728** Households
10,368 Individuals

*Reported during Jan 01 - Nov 28, 2020

