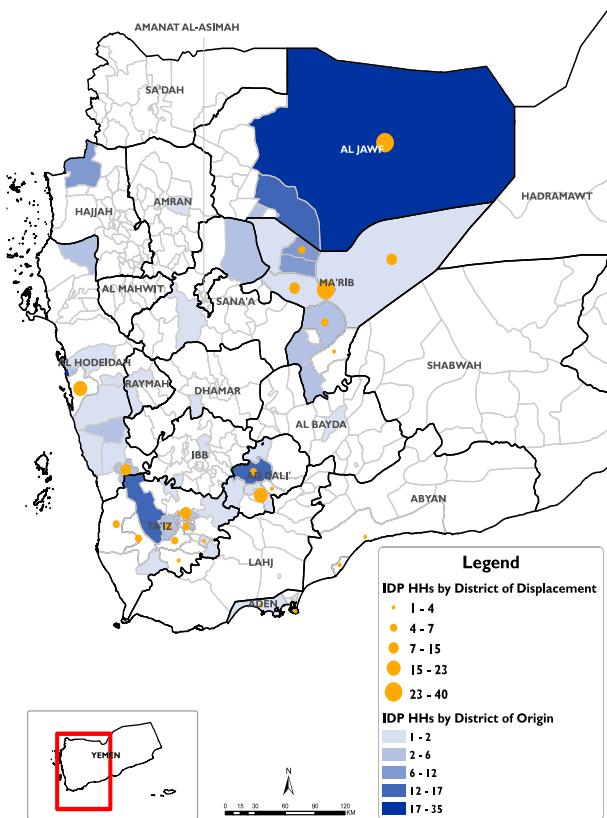


Displaced Households by District of Displacement and Origin

Number of Displaced Households (IDP HHs) per Governorate

Governorate of Displacement	IDP HH Displaced during the week	IDP HH who left displaced location within the week	Total IDP HH
	01 to 07 Nov	01 to 07 Nov	01 Jan to 07 Nov
Hajjah	N/A	N/A	N/A
Al Dhale'e	26	6	2,638
Al Hudaydah	38	0	3,545
Taizz	50	0	2,366
Amanat Al Asimah	N/A	N/A	N/A
Ibb	N/A	N/A	N/A
Marib	79	0	12,143
Amran	N/A	N/A	N/A
Sana'a	N/A	N/A	N/A
Shabwah	0	0	687
Lahj	0	0	858
Aden	3	3	163
Sa'ada	N/A	N/A	N/A
Abyan	6	2	796
Dhamar	N/A	N/A	N/A
Hadramaut	9	0	1,131
Al Bayda	0	0	138
Al Jawf	30	0	1,591
Raymah	N/A	N/A	N/A
Al Mahwit	N/A	N/A	N/A
Socotra	0	0	0
Al Maharah	0	0	575
Total	241	11	26,631



*Based on data collected during 01 - 07 Nov, 2020

DISPLACEMENT TRACKING

DTM's Rapid Displacement Tracking (RDT) tool collects and reports on numbers of households forced to flee on a daily basis, allowing for regular reporting of new displacements in terms of numbers, geography and needs. In the first eight months of 2020, conflict and natural disasters have resulted in new patterns of displacement, particularly in Marib, Al Hudaydah, Al Dhale'e, Taizz and Al Jawf governorates.

WEEKLY UPDATE

Between 1 and 7 November, newly displaced households were recorded in Marib (79 HH), Taizz (50 HH), and Al Hudaydah (38 HH). Most of these displacements were the result of increased fighting in Al Hudaydah (52 HH), Al Jawf (50 HH) and Marib (37 HH).

IDP HH WHO LEFT DISPLACED LOCATIONS

Since the beginning of 2020, DTM also identified other **1,298** previously displaced households who left the displaced location and moved to either their place of origin or some other displaced location.

Displaced People
 26,631 Households
 159,786 Individuals

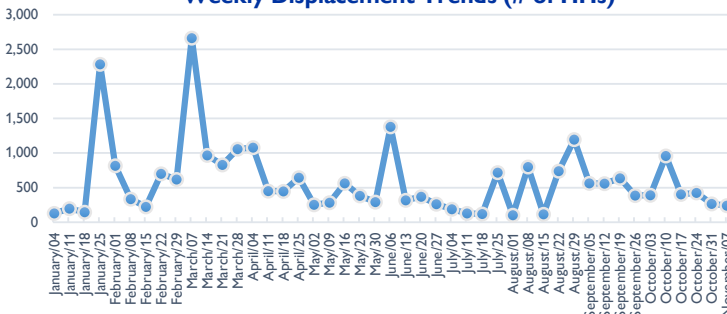
*Reported during Jan 01 - Nov 07, 2020

UPDATE: Additional **14** HHs were displaced between Oct 25 - Oct 31, 2020, and have been added in the total households.

Returned People
 1,583 Households
 9,498 Individuals

*Reported during Jan 01 - Nov 07, 2020

Weekly Displacement Trends (# of HHs)



IDPs Shelter Types

- In Isolated/dispersed settlements (detached from a location) 6%
- In Rented Accommodation 6%
- With Host Families who are Relatives (no rental fee) 13%
- In Other Private Building 34%
- In Other Public Building 41%

