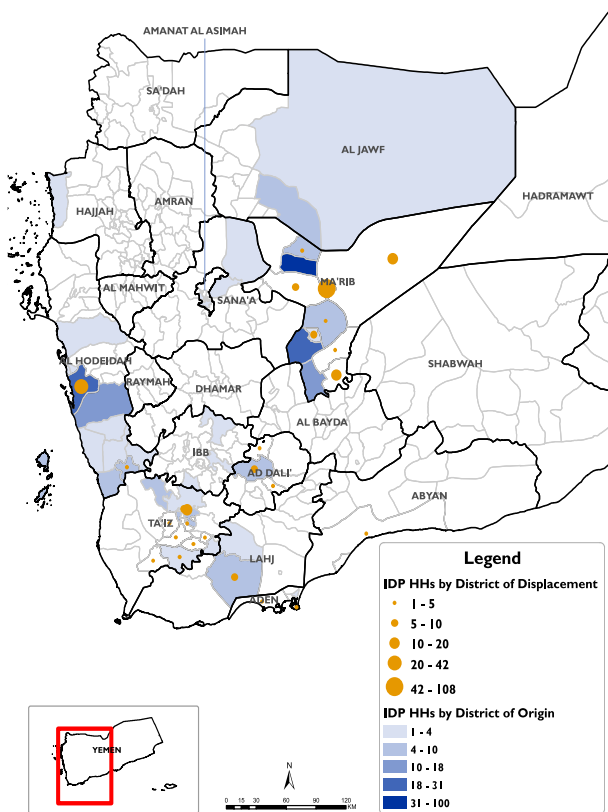


Displaced Households by District of Displacement and Origin

Number of Displaced Households (IDP HHs) per Governorate

Governorate of Displacement	IDP HH Displaced during the week	IDP HH who left displaced location within the week	Total IDP HH
	27 Sep to 03 Oct		01 Jan to 03 Oct
Hajjah	N/A	N/A	N/A
Al Dhale'e	14	0	2,487
Al Hudaydah	47	0	2,861
Taizz	38	0	2,056
Amanat Al Asimah	N/A	N/A	N/A
Ibb	N/A	N/A	N/A
Marib	170	9	10,975
Amran	N/A	N/A	N/A
Sana'a	N/A	N/A	N/A
Shabwah	0	0	687
Lahj	8	0	847
Aden	6	5	157
Sa'ada	N/A	N/A	N/A
Abyan	1	0	780
Dhamar	N/A	N/A	N/A
Hadramaut	10	0	1,122
Al Bayda	0	0	138
Al Jawf	0	0	1,561
Raymah	N/A	N/A	N/A
Al Mahwit	N/A	N/A	N/A
Socotra	0	0	0
Al Maharah	6	0	575
Total	300	14	24,246



*Based on data collected during 27 Sep - 03 Oct, 2020

DISPLACEMENT TRACKING

DTM's Rapid Displacement Tracking (RDT) tool collects and reports on numbers of households forced to flee on a daily basis, allowing for regular reporting of new displacements in terms of numbers, geography and needs. In the first eight months of 2020, conflict and natural disasters have resulted in new patterns of displacement, particularly in Marib, Al Hudaydah, Al Dhale'e, Taizz and Al Jawf governorates.

WEEKLY UPDATE

Between 27 Sep and 3 October, newly displaced households were recorded in Marib (170 HH), Al Hudaydah (47 HH), and Taizz (38 HH). Most of these displacements were the result of increased fighting in Marib (168 HH), Al Hudaydah (70 HH) and Taizz (22 HH).

IDP HH WHO LEFT DISPLACED LOCATIONS

Since the beginning of 2020, DTM also identified other **1,205** previously displaced households who left the displaced location and moved to either their place of origin or some other displaced location.

Displaced People
 24,246 Households
 145,476 Individuals

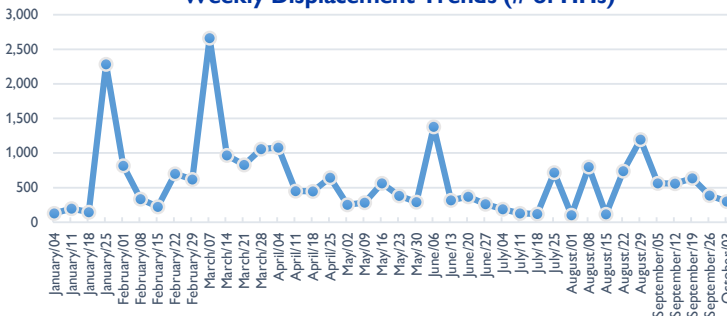
*Reported during Jan 01 - Oct 03, 2020

UPDATE: Additional **13** HHs were displaced between Sep 20 - Sep 26, 2020, and have been added in the total households

Returned People
 1,521 Households
 9,126 Individuals

*Reported during Jan 01 - Oct 03, 2020

Weekly Displacement Trends (# of HHs)



IDPs Shelter Types

- In Settlements (Grouped of Families) Urban and Rural
- In Isolated/dispersed settlements (detached from a location)
- In Rented Accommodation
- With Host Families who are Relatives (no rental fee)
- With Host Families who are not Relatives (no rental fee)

