



HIGHLIGHTS

The Displacement Tracking Matrix (DTM) is a system to track and monitor displacement and population mobility. It has been implemented in over 80 countries worldwide and is designed to regularly and systematically capture, process and disseminate information to provide a better understanding of the movements and evolving needs of displaced populations, whether on site or en route. It is comprised of four distinct components, namely: mobility tracking, registration, flow monitoring and surveying.

Commencing in October 2019, DTM Sudan began its preparation for the first round of Mobility Tracking; this started with the training of IOM field teams across the seven states of implementation, namely North, East, South, West and Central Darfur, as well as South and West Kordofan. Data collection was then carried out over a two-month period, concluding in mid-January and followed by data-cleaning and verification to produce this first round of results. IOM is planning to expand its operation to four additional states (Red Sea, Kassala, Gedaref and Blue Nile State) by the end of this year.

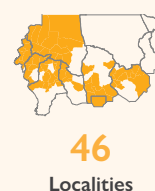
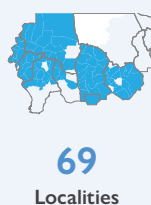
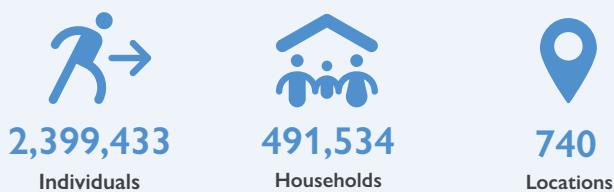
Mobility Tracking Round One identified the presence of 2,399,433 internally displaced persons (IDPs), 703,596 permanent returnees from internal displacement, in addition to 137,870 seasonal returnees, 39,083 returnees from abroad, 171,945 Sudanese nationals (having reportedly left their location of origin since the beginning of 2019), and 140,661 foreign nationals currently residing in Sudan.



INTERNALLY DISPLACED PERSONS (IDPs)



PERMANENT RETURNEES FROM INTERNAL DISPLACEMENT



METHODOLOGY

To gain a comprehensive understanding of displacement, and to ascertain regular and frequently updated figures on population presence – essential for understanding population movements, informing humanitarian response planning and durable solutions – DTM has expanded its operations to implement its global Mobility Tracking methodology in Sudan.

MOBILITY TRACKING

DTM Mobility Tracking is a methodology aimed at the periodic collection of information on selected target population groups within defined locations, and it allows to update such figures at regular intervals – thus providing a regular and updated picture of displacement and other forms of mobility in Sudan. Through this standard methodology, DTM produces an evidence base for programme planning, with the intention to support humanitarian transition and recovery operations across the country.

DTM predominantly employs enumerators who originate from the areas of assessment. **Enumerators** collect quantitative data at the location level, through focus group discussions with key informants (selected for their knowledge of the area under observation). **Key informants** largely consist of representatives from Humanitarian Aid Commission (HAC), humanitarian aid workers, religious leaders, sheikhs, omdas, macks, ameers, and other prominent community leaders.

The methodology utilised to implement Mobility Tracking Round One is summarised below:

- DTM conducted training workshops (in Khartoum, Al Fasher, Ag Geneina, Nyala and Kadugli) on the new methodology and its data collection processes – facilitated and supported by HAC.
- Eighty-five enumerators visited and verified the presence of target population groups in over 1,500 locations – previously identified through IOM registration exercises and outlined in Mobility Tracking Round Zero. New locations with population presence were further identified and added to DTM's existing baseline.
- DTM field teams relied on a broad network of key informants to gather the numbers and characteristics of each population group present per location. Triangulation of information provided by different key informants on the same geographic location allowed for verification of the figures.
- Additional information was collected, such as the time of arrival of IDPs, returnees from internal displacement and foreign nationals, as well as their locations of origin of previous displacement, reasons for displacement and return, and temporary shelter categories.
- Sex and age disaggregation was determined using a demographic calculator tool based on 20 randomly selected households within each identified location.

- **Locations** are defined as the smallest administrative units where population groups can be assessed, such as villages, neighbourhoods, camps, or gathering-sites.

Field teams will continue to revisit all locations and interview key informants to update locations and verify population presence on a quarter-yearly basis – ensuring updates are communicated regularly through datasets and reports, and remain reflective of evolving dynamics in Sudan.

TARGET POPULATION GROUPS

DTM in Sudan collects information on the following target population groups:

Internally displaced persons

According to the Guiding Principles on Internal Displacement, internally displaced persons (IDPs) are, “persons or groups of persons who have been forced or obliged to flee or to leave their homes or places of habitual residence, in particular as a result of or in order to avoid the effects of armed conflict, situations of generalized violence, violations of human rights or natural or human-made disasters, and who have not crossed an internationally recognized State border” (United Nations, 1998). Building from this, and for operational purposes, the DTM considers a person to be displaced if they have been forced or obliged to flee from their habitual residence by a causing event since 2003 and subsequently sought safety in a different location: village, neighbourhood, camp, or gathering-site.

Returnees from internal displacement

Persons who were previously displaced from their habitual residence since 2003, within Sudan, and have now voluntarily returned to the location (village, neighbourhood) of their habitual residence – irrespective of whether they have returned to their former residence or to another shelter type. The DTM definition does not, however, refer to returning in safety and dignity, nor with a durable solution.

- **Permanent returnees from internal displacement:** Any returnee who has returned to his/her place of habitual residence.
- **Seasonal returnees from internal displacement:** Any returnee who returns to his/her place of habitual residence annually based on seasonal activities, for example, seasonal harvests.

Returnees from abroad

Classified as all Sudanese nationals who have returned to Sudan from abroad, regardless of whether they sought international protection or not.

Foreign nationals

Any person who is not a Sudanese national and residing within the location (village, neighbourhood, camp, gathering-site) regardless of their status; including persons who may/may not have sought international protection while in Sudan.

¹ For a nomadic population, habitual residence refers to the habitual living space on which their pastoral way of life is dependent.

IDPs OVERVIEW

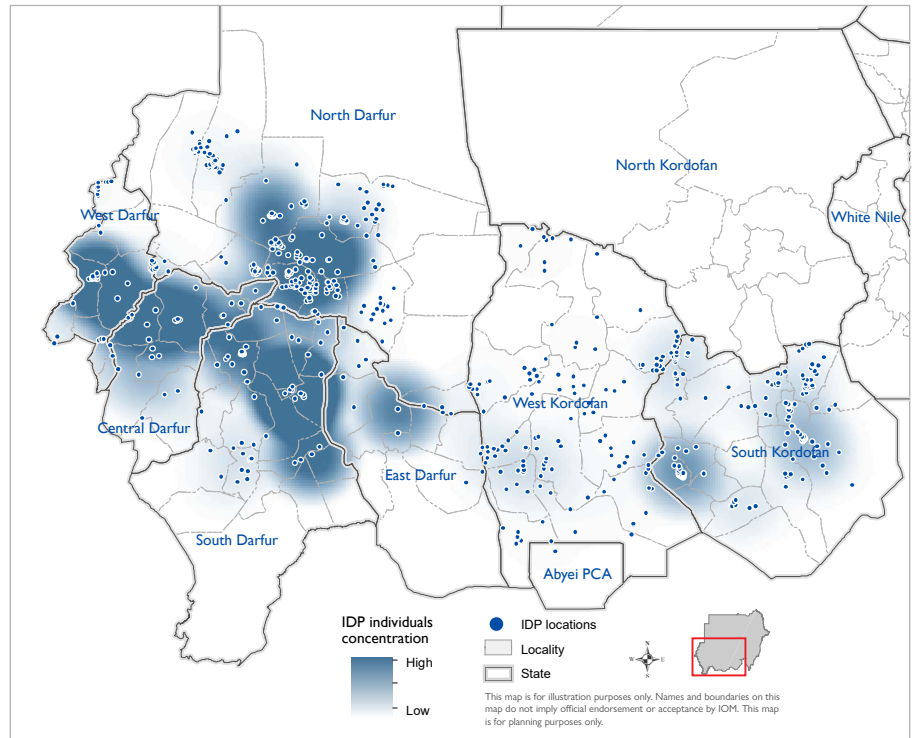
DTM identifies a total number of 2,399,433 individuals within 69 localities, pinpointed at 740 locations, across seven states in Sudan.

The greatest proportion of displacement in the country is protracted (ongoing for more than five years) (refer to Diagram 1). Subsequently, an estimated 1,527,807 current IDPs (64%) were initially displaced between 2003 and 2010 at the height of the Darfur crisis. In comparison, 76,416 IDPs (3%) have been newly displaced in 2018 and 39,379 (2%) in 2019 – demonstrating a decreasing trend in new displacement and potentially reflective of a reduction in insecurities across the region.

In terms of population presence, the state with the highest number of IDPs is South Darfur – having recorded an estimated 793,328 individuals (33% of the total IDP count) – followed by North Darfur (21%). Comparatively, West Kordofan is estimated to have the lowest proportion of 73,015 IDPs (3%), followed by East Darfur (4%).

North Darfur has the greatest number of IDP locations – consisting of 256 sites (34% of the total), followed by South Kordofan (27%). East Darfur has the fewest number of IDP locations and represents just one per cent of the total location count. It is evident that IDPs are more highly concentrated in the Darfur states than in Kordofan. Central Darfur, for example,

has 17 locations (2% of the total) and is hosting on average 22,189 IDPs per location, in contrast to West Kordofan which has a far sparser distribution – averaging 493 individuals per site. This dynamic is likely attributed to the protracted nature of displacement ongoing since 2003, as well as the high presence of densely populated camps in Darfur in comparison to more informal gathering-sites in Kordofan.



Map 1 IDP population density

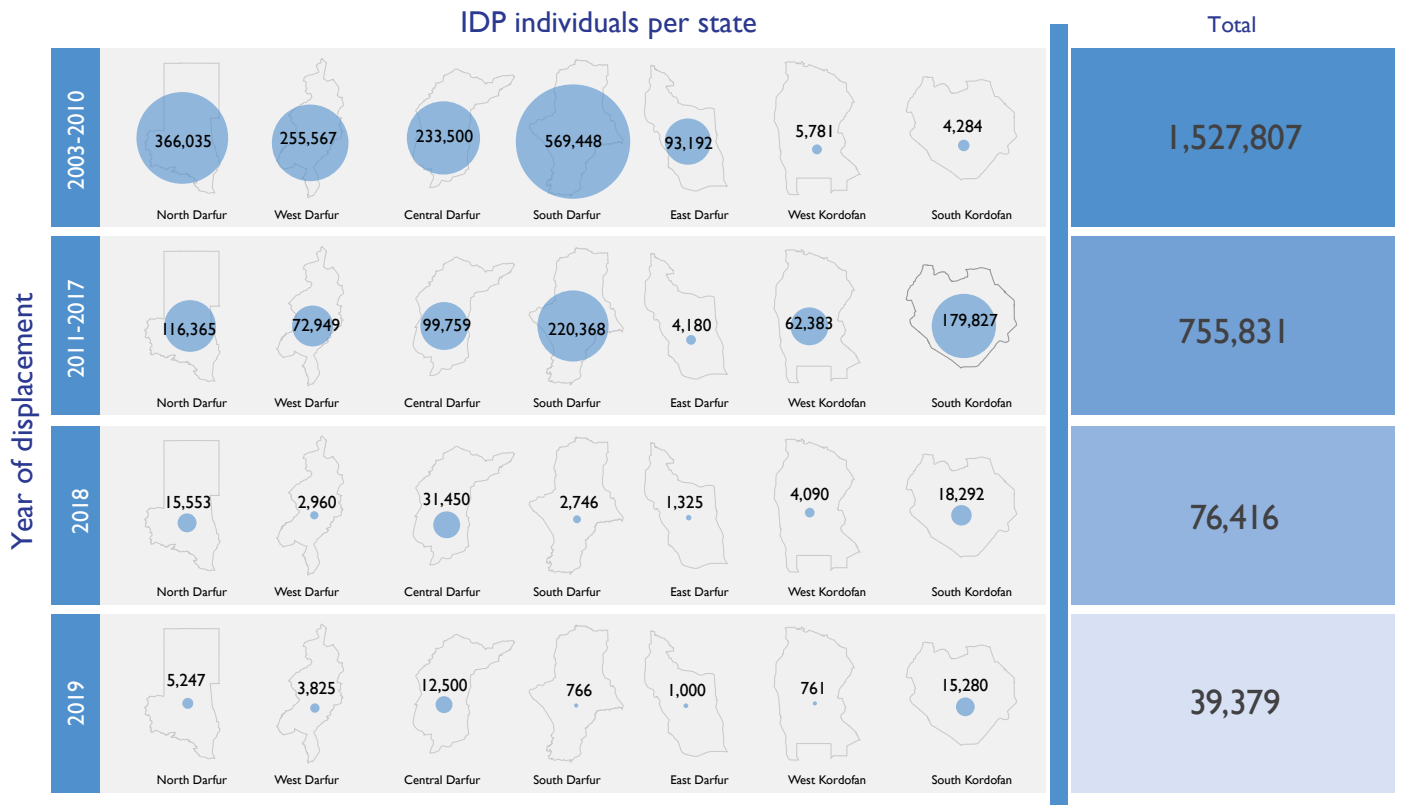
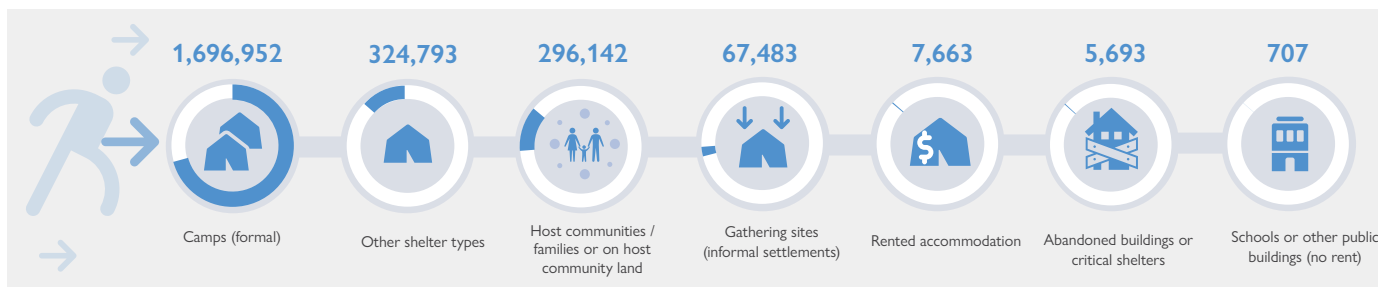


Diagram 1 Timeline of displacement by states with current IDP population presence

TEMPORARY IDP SHELTER TYPES



MAIN REASONS FOR THE ARRIVAL OF IDPs

Armed conflict was the primary reason for displacement in 90 per cent of IDP locations assessed. Communal clashes, which tend to be based on tensions over ethnicity, land, or livestock, were said to be the main reason for displacement in 37 per cent of IDP locations. Eight per cent of locations reported displacement due to natural disasters (such as floods or droughts), and a further eight per cent due to economic reasons – populations forced to move due to a lack of livelihoods and/or service provisions.²

PLACES OF ORIGIN OF IDPs

The majority of IDPs in each state (with the exception of West Kordofan and West Darfur) are displaced from within the same state. Furthermore, North Darfur hosts the largest proportion of displaced individuals from within its own state, indicating movement to be confined to the north-west region of Sudan. A similar observation is noted in both West, South and Central Darfur, as well as both Kordofan states – suggestive of logistical and security restrictions faced by IDPs when travelling far distances in search of safety. West Kordofan and West Darfur, in contrast, host a seemingly heterogeneous group of IDPs from neighbouring states and beyond.

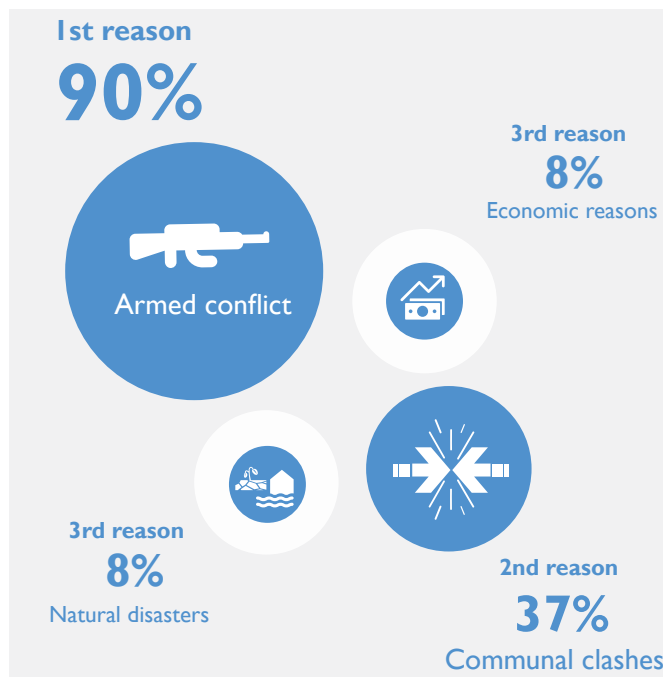
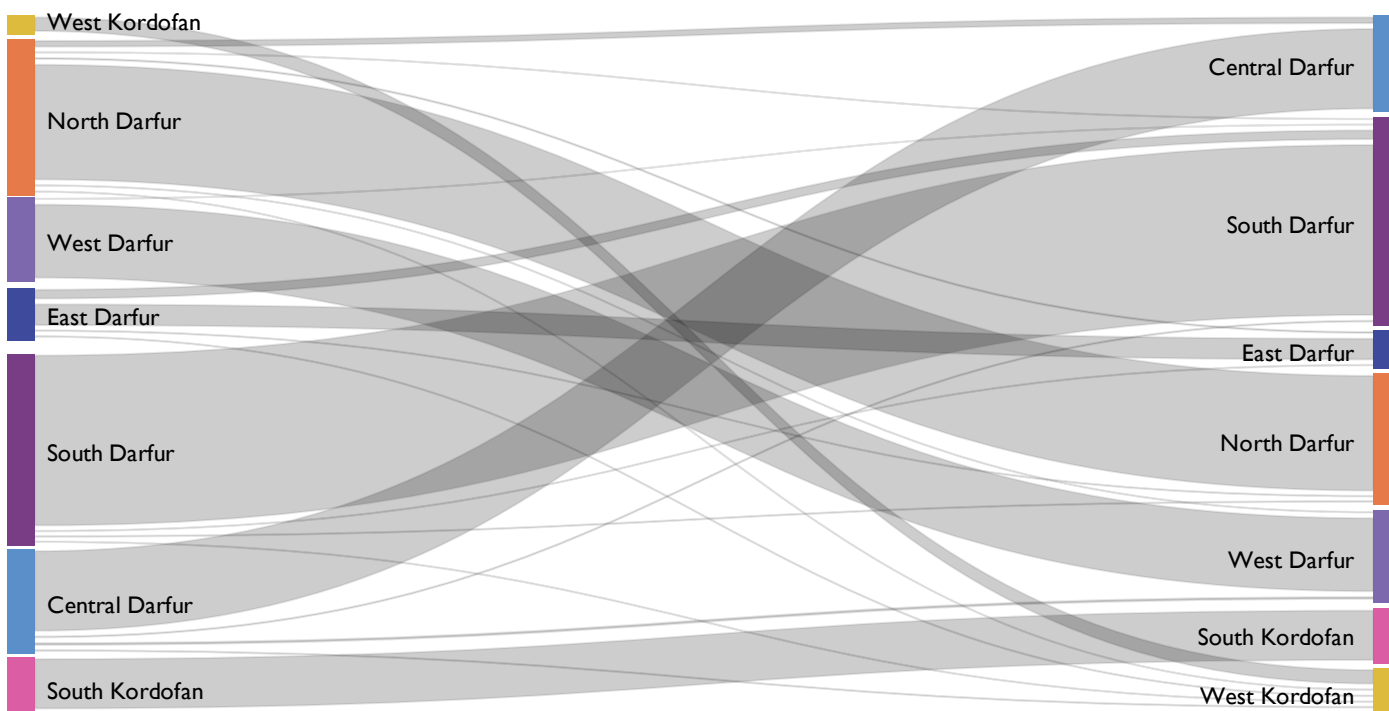


Diagram 2 Main reasons for IDP displacement



Graph 1 Origin – destination graph for IDPs per state

² Percentages refer to the percentage of IDP locations where reasons for the arrival of IDPs were indicated.

RETURNEES FROM INTERNAL DISPLACEMENT OVERVIEW

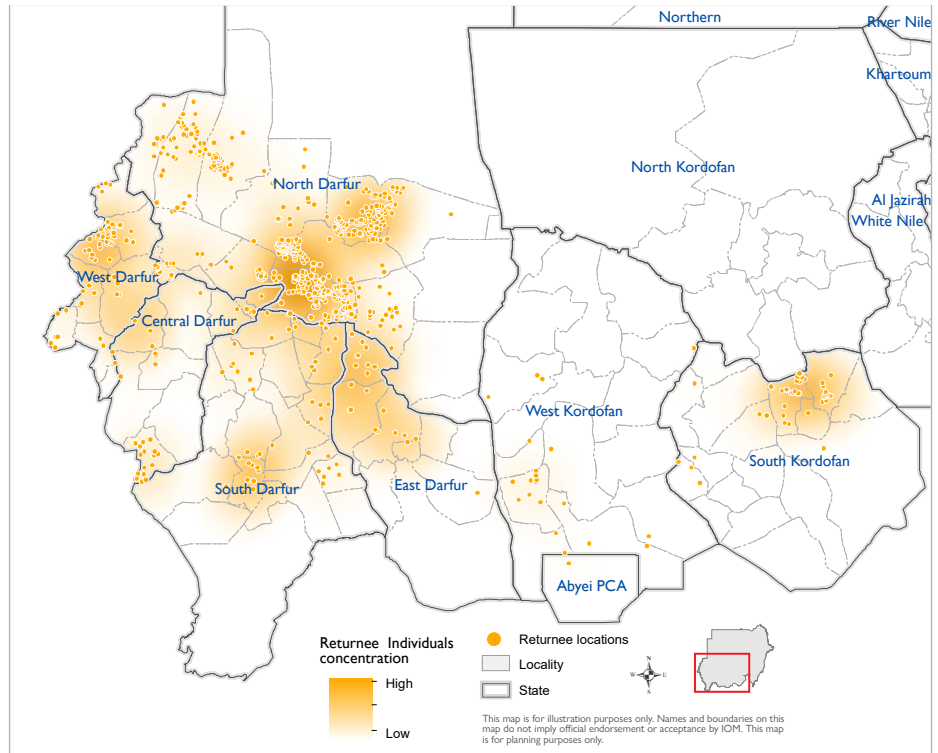
PERMANENT RETURNEES OVERVIEW

DTM estimates a total number of 703,596 returnees from internal displacement within 46 localities, pinpointed at 757 locations, across seven states in Sudan.

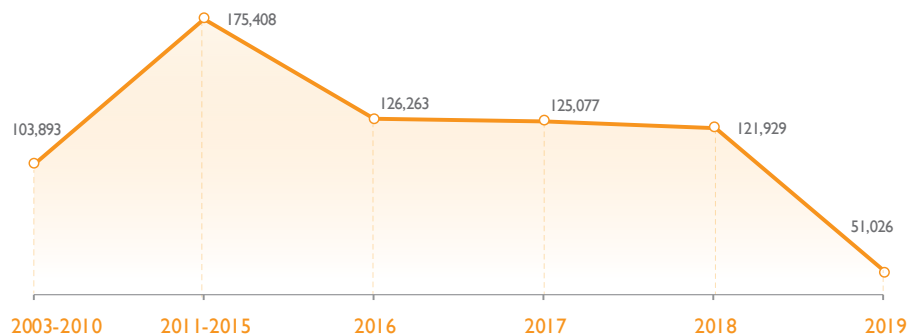
The lowest proportion of total returns occurs over the course of 2019, while 2011-2015 saw the highest return rate (refer to *Graph 2*) – reflective of a mass influx of individuals returning to their habitual residences at the end of the Darfur crisis. This steady decrease in returns is a direct correlation with the continual decrease in new displacement levels across Sudan as well as the dynamics of protracted displacement. South Darfur, for example, hosts the largest presence of IDPs displaced since 2003-2010, yet only 20 per cent of displaced populations have returned to their locations of origin in that state. Although this is suggestive of the widespread presence and permanence of IDP camps in the region, it also reflects a relationship between the increased length of displacement and the diminishing likelihood of return – families forging new lives for themselves as they become settled into what were originally ‘temporary’ sites of displacement.

The state with the highest number of returnees from internal displacement is North Darfur, where the total population presence is 246,292 individuals (35% of the total individual count). West Kordofan, in comparison, estimates a total number of 10,527 returnees from internal displacement (1%) – the lowest proportion of total returnees, likely attributed to West Kordofan hosting the lowest percentage of IDPs or the lowest percentage of people displaced from the area.

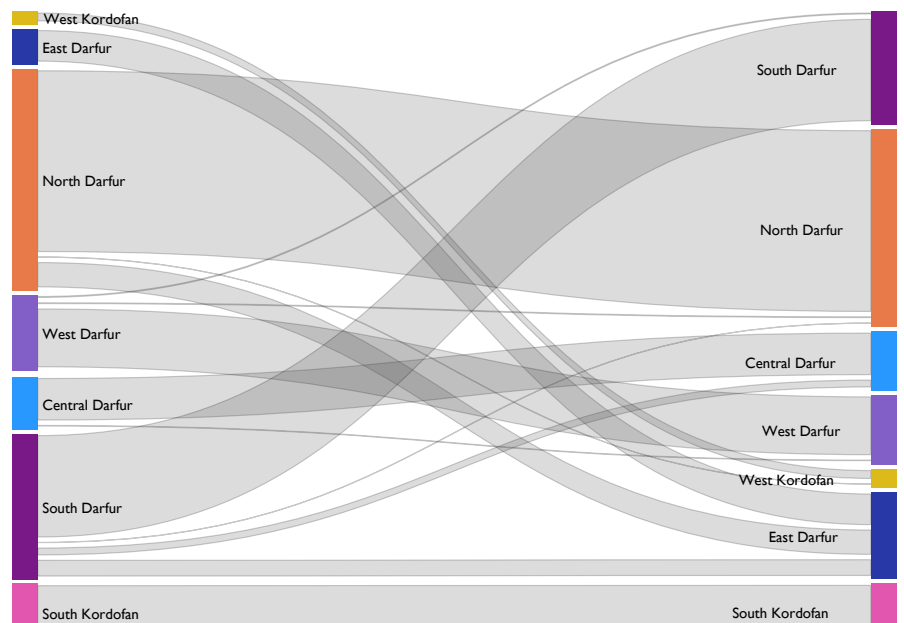
In terms of returnee locations, North Darfur represents the largest proportion of sites – spanning 578 locations (70% of the total count) and consistent with the trend observed in *Graph 2*, where the majority of displaced populations originate from within the same state. East Darfur, in contrast, has one of the fewest number of returnee locations assessed, representing just three per cent overall. This is consistent with the levels of population concentrated in each state where, for example, East Darfur has on average 4,537 returnees situated within each location of return (the highest state in terms of density per location). North Darfur currently has the lowest density with an average of 465 individuals per location, followed by West Kordofan (554 individuals).



Map 2 Returnee population density



Graph 2 Timeline of returns to locations of habitual residence by state

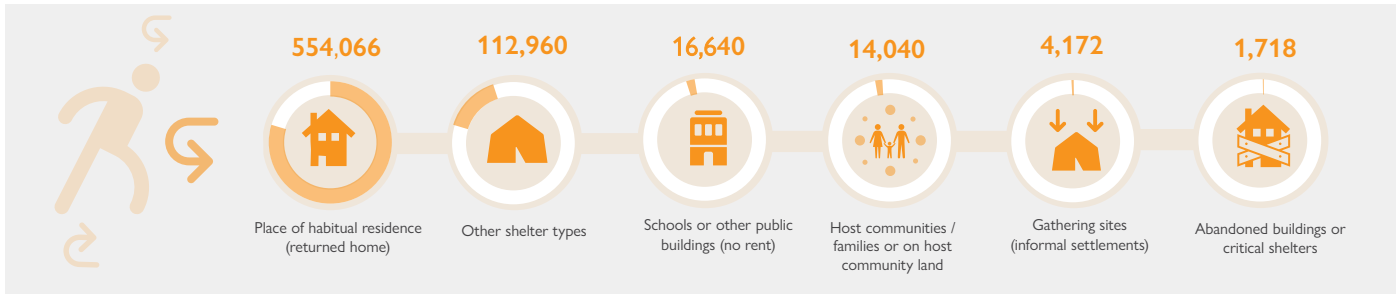


Graph 3 Origin – destination graph for returnees from internal displacement by state

As seen with the previous displacement graph (refer to Graph 1), North Darfur also hosts the largest proportion of individuals having returned from within the same state. The same situation is reflected in South and West Darfur, as well as South and West Kordofan – demonstrating the additional challenges that may be

faced in interstate returns as well as the overarching prevalence of intrastate displacement. Central Darfur and East Darfur, comparatively, host a heterogeneous group of returnees from differing states of displacement.

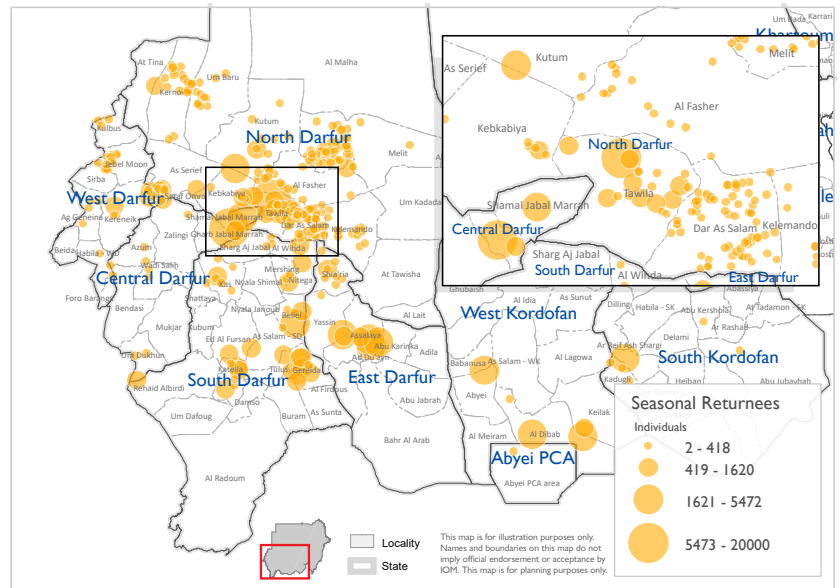
SHELTER TYPE IN WHICH PERMANENT RETURNEES ARE RESIDING



SEASONAL RETURNEES OVERVIEW



Due to the dynamic prominence of seasonal mobility in Sudan, DTM has identified 137,870 returnees (26,712 households) who have returned to their habitual residence on an impermanent basis – due to seasonal changes and the subsequent need to return for cultivation, harvesting and livestock purposes. Seasonal returnees were recorded in 360 out of the total 757 permanent returnee locations identified. These populations figures are expected to remain influx and observe drastic changes over the course of each year, as people continue to move with the seasons.

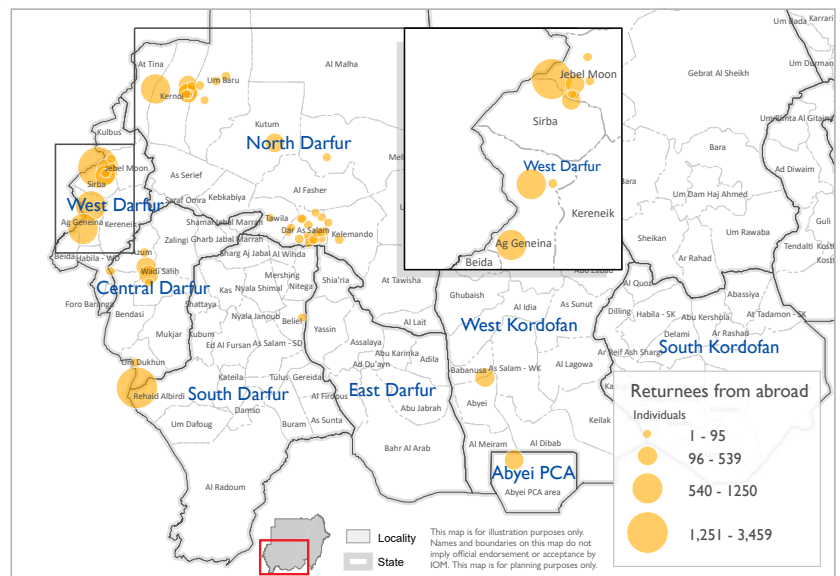


Map 3 Locations hosting seasonal returnees from internal displacement

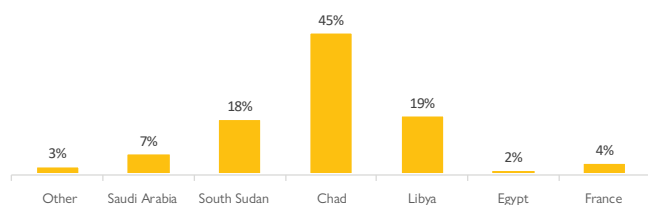
RETURNEES FROM ABROAD OVERVIEW



The estimated presence of returnees from abroad were much lower than returnees from internal displacement, representing just five per cent of the total returnee count (consisting of 39,083 individuals and 8,098 households). The majority of returnees from abroad came from Chad (46%), followed by Libya (20%) and South Sudan (18%). They are predominantly located in West Kordofan (12,109 individuals) and West Darfur (10,380 individuals), which can be explained in relation to the close proximity of both South Sudan and Chad. (It could be assumed that many of these cases were initially IDPs who crossed the international borders and subsequently became refugees.) Returnees from abroad are present in far fewer locations and localities than observed with returnees from internal displacement (20 localities and 110 locations respectively).



Map 4 Locations hosting returnees from abroad

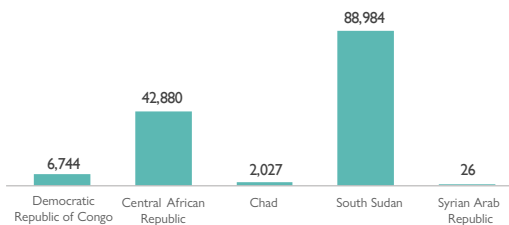


Graph 4 Countries from which returnees have returned

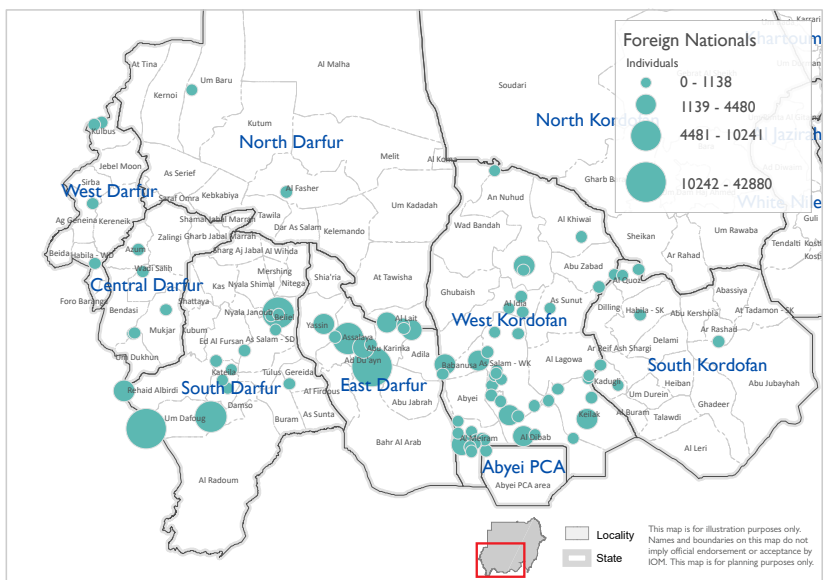


FOREIGN NATIONALS OVERVIEW

DTM estimates a total of 140,661 foreign nationals (36,801 households) present within the seven target Darfur and Kordofan states, irrespective of their legal status. Forty per cent of total foreign nationals are found in South Darfur, with the largest population group having arrived from South Sudan. The second and third largest percentages are located in West Kordofan and East Darfur, suggestive of a desired westward trend once having entered Sudan via Abyei PCA Area.



Graph 5 Total foreign nationalities across all states

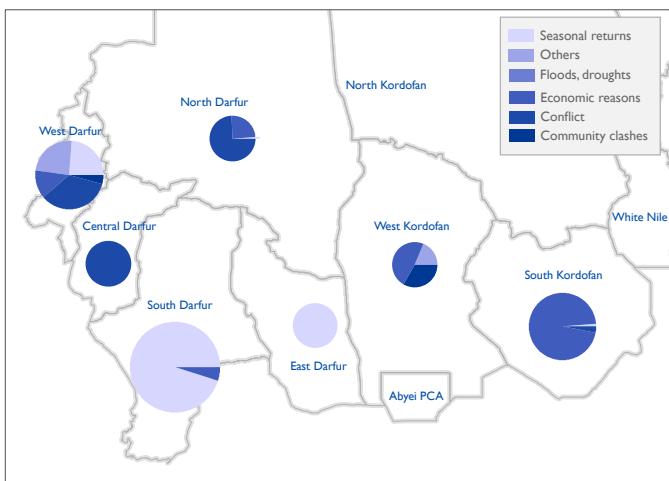


Map 5 Locations hosting foreign nationals

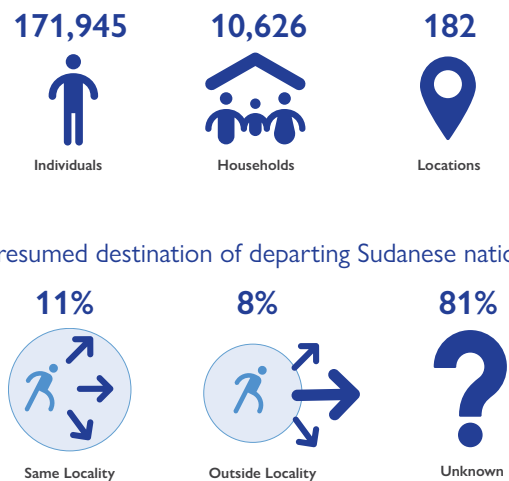
SUDANESE NATIONALS DEPARTING LOCATION OF ORIGIN

Key informants provided DTM enumerators with estimations on the number of residents who had either left or fled each location since the beginning of 2019. It is reported that an estimated

171,945 Sudanese nationals (10,626 households) have departed over the past year, predominantly from South Darfur (136,510 individuals) and for reasons attributed to seasonal movements.



Map 6 Reasons for Sudanese nationals' departure by state

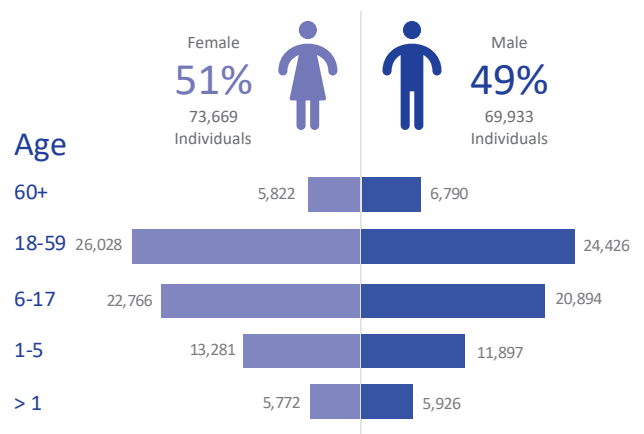


SEX AND AGE DISAGGREGATED DATA (SADD) OVERVIEW

Within each location assessed, and across all population categories, enumerators randomly selected 20 households and identified the total number of household members, as well as the age and sex demographics of each individual present. Using this demographic calculator, DTM was able to provide an overview of SADD for each of the seven target states. In North Darfur, for example, which holds the greatest percentage of locations assessed (52%), 72,386 household members were identified – 37,569 of whom were female (52%) and 34,817 male (48%). In total, and across all states, 73,669 females were accounted for (51%) and 69,933 males (49%), depicting a relatively even sex distribution.

The predominant age category observed was between 18 and 59 and totalled 50,454 household members (35%), with females constituting the largest proportion and males the second largest by a difference of 1,602 individuals. In terms of the smallest age group, only 11,698 household members were infants under the age of one (8%) and 12,612 over the age of 60 (9%). These same characteristics were reflected in

the data collected from North Darfur. DTM plans to further disaggregate SADD by population groups in future Mobility Tracking rounds.



Graph 6 Total population categories disaggregated by sex and age

GEOGRAPHICAL CLASSIFICATIONS OF INTERNAL DISPLACEMENT AND RETURN

An overview of the geographical distribution of population presence illustrates that 1,595,217 IDPs (66%) are located in urban areas and 804,216 IDPs (34%) in rural areas across the seven states assessed by DTM. In comparison, 635,118 returnees from internal displacement (90%) have returned to their rural habitual place of origin, while only 68,478 (10%) have returned to urban settings.

Both Central Darfur and West Kordofan predominantly host rural IDPs, which may reflect a rural dimension to the conflict, whereas IDPs in South Darfur are mostly found in urban locations (refer to Map 7). Neither Central nor West Darfur (with the exception of 150 individuals) have urban returnees, however, rural returnees from internal displacement are consistently distributed across all states assessed.

Furthermore, while the majority of all returnees from internal displacement are located in rural villages, there is a far wider variety in IDP location types. In North, East and South Darfur, IDPs are predominantly displaced in urban camps. IDPs in Central Darfur are largely found in rural camps, and IDPs in West Kordofan IDPs tend to be found in rural villages. Finally, both West Darfur and South Kordofan observe the majority of IDPs to be located in urban neighbourhoods or admin units.

Although trends in rural-urban (or vice versa) flows cannot be deduced from this data alone, the majority of IDPs may be displaced from their rural homes to urban cities in search of safety and/or economic security. While a third of displaced populations are likely to have been displaced from rural to rural locations, far fewer originated from urban geographies. This suggests a proportional relationship between displacement and urbanisation or the contextual influence of rural areas being more conducive to return.

IDPs

Rural Urban

East Darfur

West Kordofan

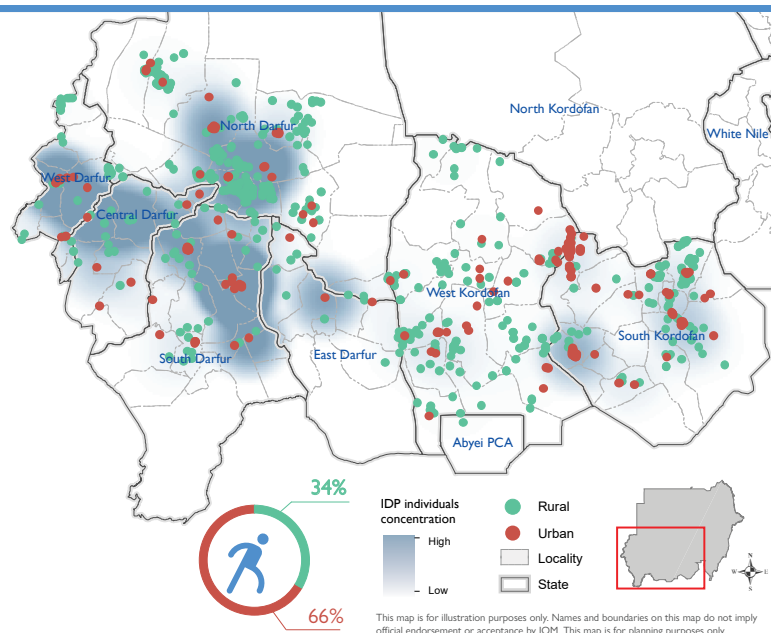
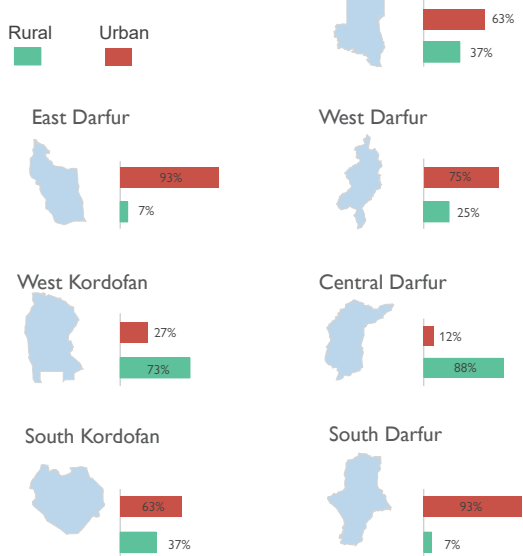
South Kordofan

North Darfur

West Darfur

Central Darfur

South Darfur



Map 7 IDP population density and geographical (urban-rural) location classifications

Returnees

Rural Urban

East Darfur

West Kordofan

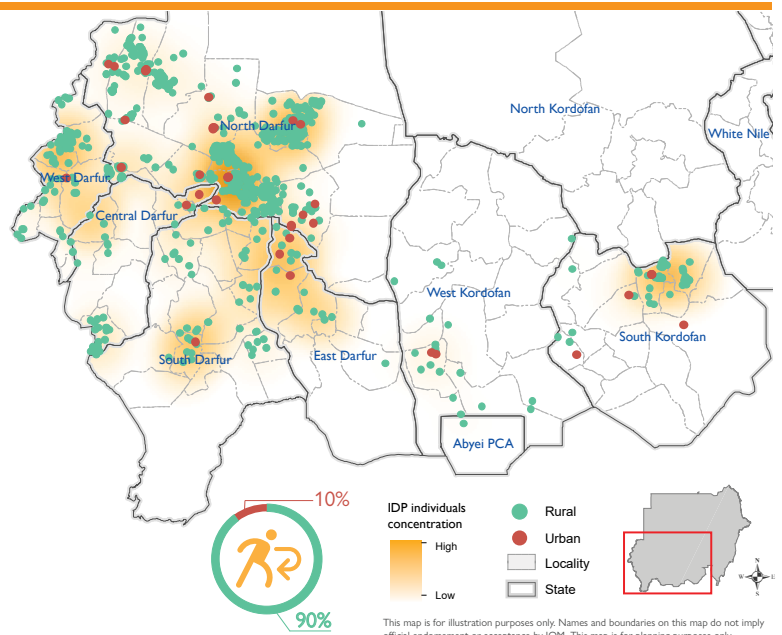
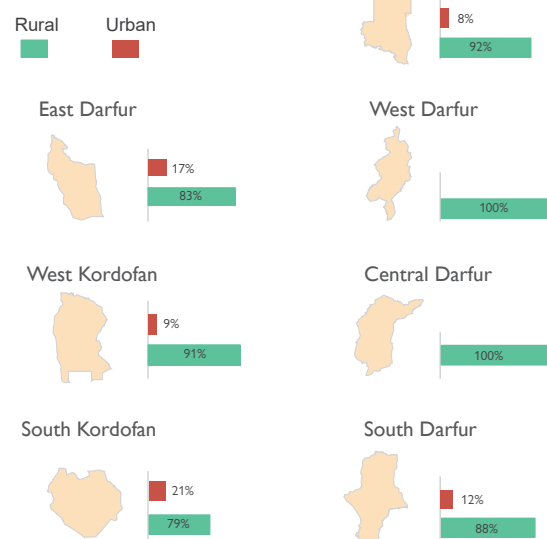
South Kordofan

North Darfur

West Darfur

Central Darfur

South Darfur



Map 8 Returnee population density and geographical (urban-rural) location classifications

COMPARISONS TO BASELINE ROUND ZERO

Baseline Round Zero – a compilation of all verified data registrations³ for both IDPs and returnees, commencing in 2010 and 2015 respectively – identified a total number of 2,086,934 registered IDPs (571,167 affected households), 483,790 returnees from internal displacement and 59,476 returnees from abroad across 1,533 locations in Sudan.

Comparatively, after the first round of Mobility Tracking, DTM has recorded 15 per cent more IDPs, 45 per cent more returnees from internal displacement and 34 per cent less returnees from abroad. It is important to note that the baseline figures used in Round Zero are those collected through DTM registration activities, which are conducted upon request where needed and therefore do not cover the same geographic scope over systematised rounds. Baseline Round Zero data collected for some locations included registration data that have not been updated since the initial registration request, which may date back to 2010 for IDPs and 2015 for returnees. The consistent implementation of mobility tracking will therefore allow for comparative analysis of the same methodology refined and improved over time.

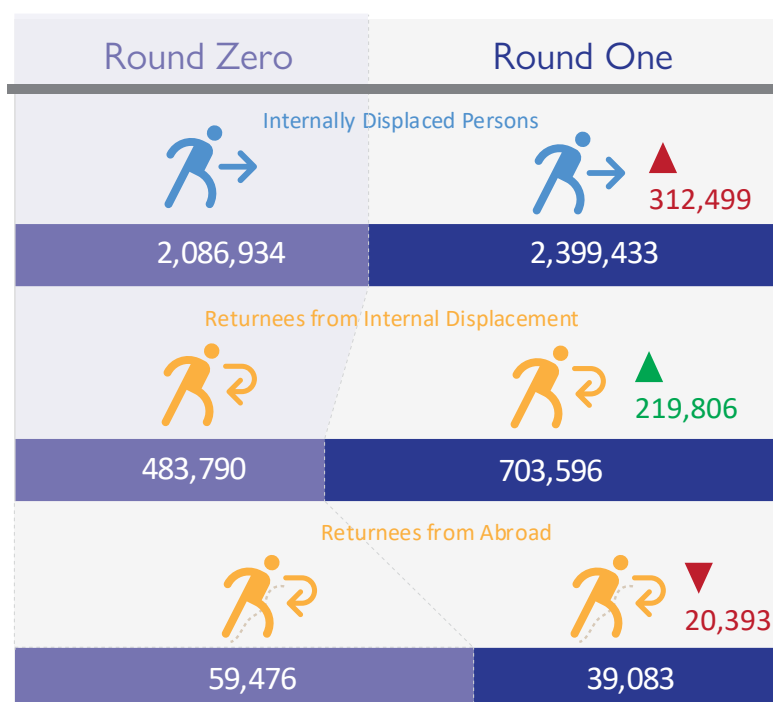


Diagram 3 Round Zero and Round One comparison of figures

CREDIBILITY RATING

The credibility rating per location is ranked by the enumerators and analysed in accordance with a set of indicators. Namely, these indicators include the number of key informants interviewed per location, whether the information was provided over the phone or in person, whether the information provided by the source (key informant) matches that of other sources, whether the source referenced any records or lists and whether the information provided by the source matched the enumerator's observations. The green, orange and red scales (with green meaning high credibility, orange meaning medium and red meaning low) are then calculated based on analyses of the enumerator's responses to determine the credibility per location and highlight areas for future improvement.

Row Labels	Green	Orange	Red	Total Locations
East Darfur	5	14	5	24
Central Darfur	12	27	12	51
West Darfur	26	53	27	106
South Darfur	18	50	40	108
West Kordofan	69	82	24	175
South Kordofan	53	95	87	235
North Darfur	97	302	325	724
Grand Total	280	623	520	1423

Table 1 Credibility rating per state disaggregated by location

³ The DTM was first introduced in Sudan in 2004, to provide rapid emergency registrations with a priority of meeting immediate information needs for guiding direct assistance to vulnerable people. Since 2010, the DTM expanded to include biometric registration and data verification – implemented in response to government or humanitarian partner requests.

IOM DISCLAIMER

The opinions expressed in the report are those of the authors and do not necessarily reflect the views of the International Organization for Migration (IOM). The designations employed and the presentation of material throughout the report do not imply the expression of any opinion whatsoever on the part of IOM concerning the legal status of any country, territory, city or area, or of its authorities, or concerning its frontiers or boundaries.

IOM is committed to the principle that humane and orderly migration benefits migrants and society. As an intergovernmental organization, IOM acts with its partners in the international community to: assist in the meeting of operational challenges of migration; advance understanding of migration issues; encourage social and economic development through migration; and uphold the human dignity and well-being of migrants.

DTM SERVICES & CONTACTS

For further information, please contact IOM Sudan
 KHARTOUM Head Office
 Tel.: +249 157 554 600/1/2
 E-mail: dtmsudan@iom.int
 Website: www.sudan.iom.int | www.dtm.iom.int/sudan

Alternatively, click [here](#) for the interactive dashboard to view the available data in more detail or use your mobile to scan the QR code:



Cover image: DTM registering IDPs in East Darfur, 2018

