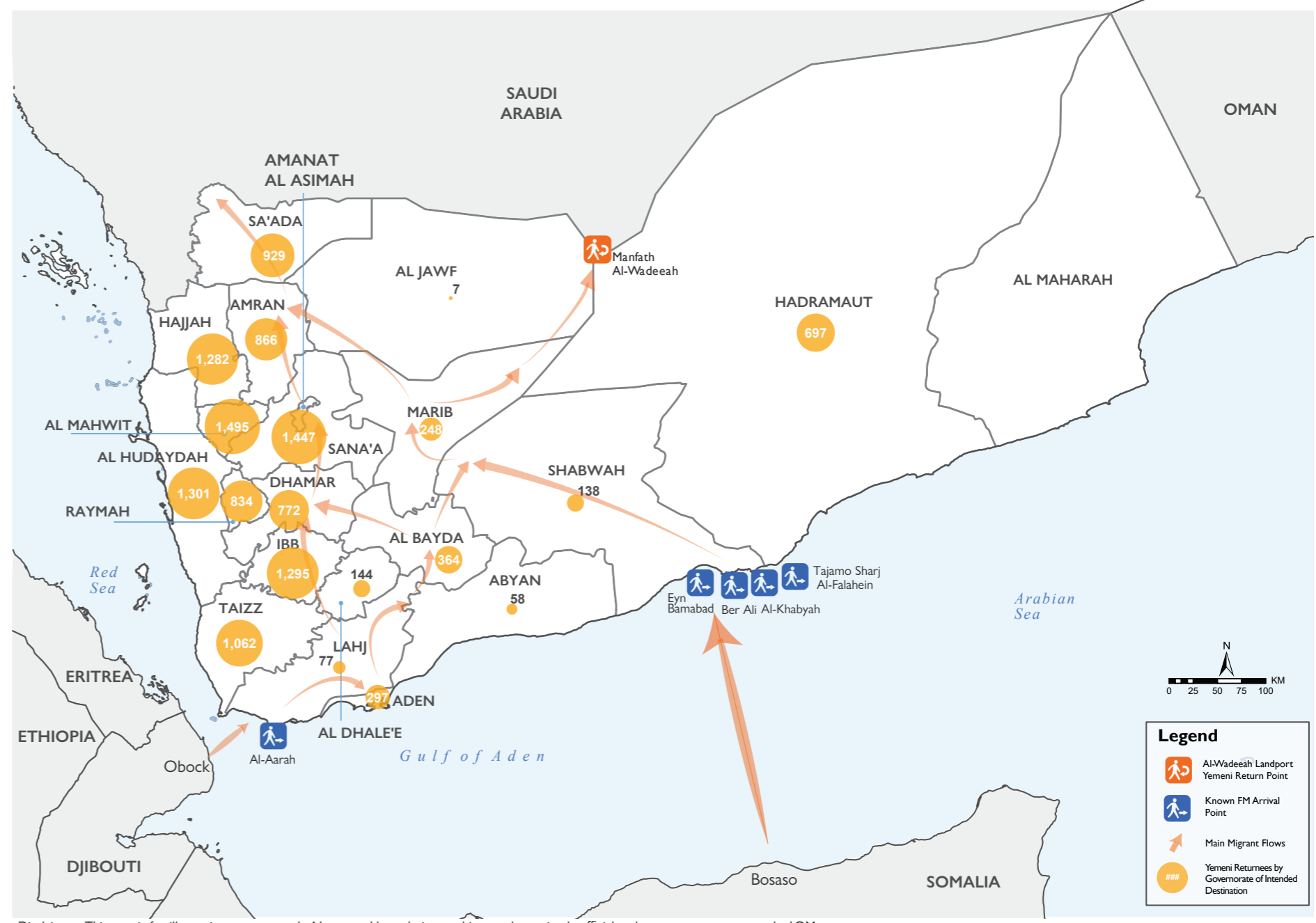
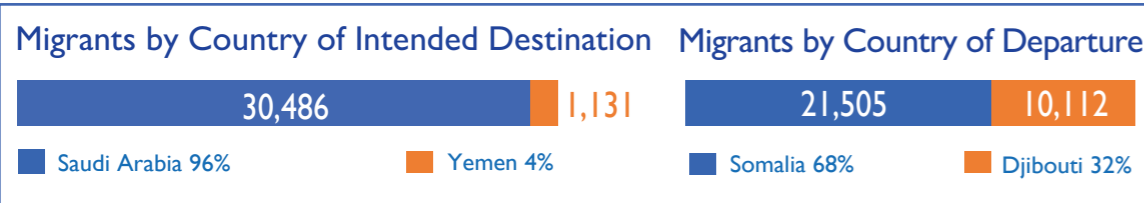
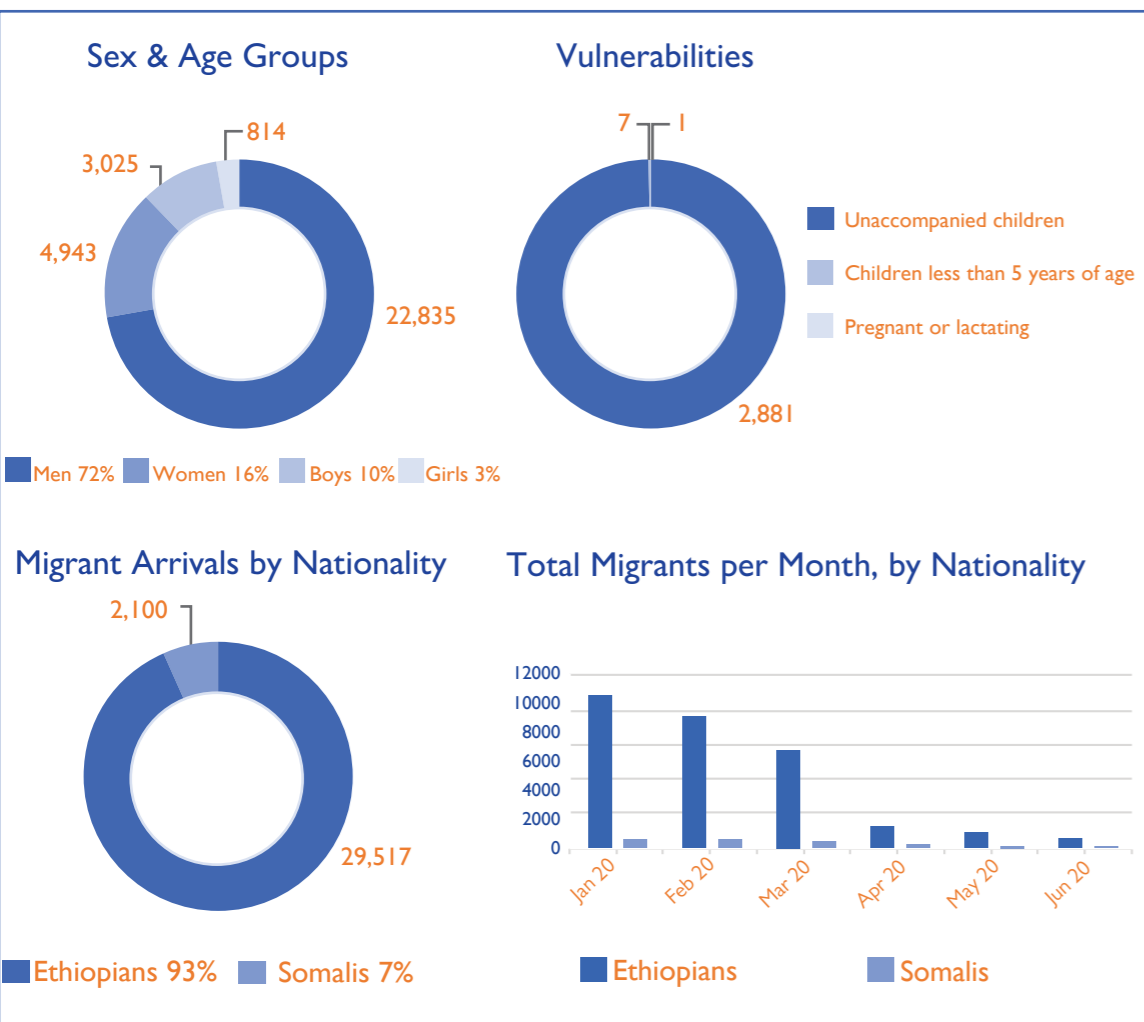


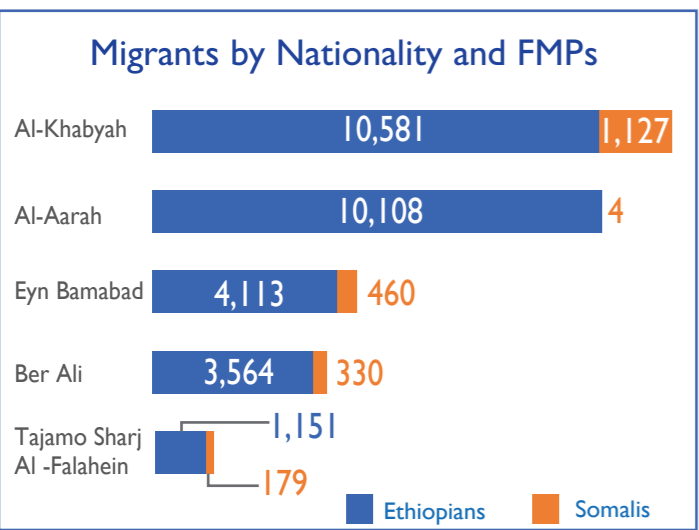
Flow Monitoring Points | Migrant Arrivals and Yemeni Returns _ January - June 2020

The International Organization for Migration (IOM) Displacement Tracking Matrix (DTM) monitors key migrant arrival and Yemeni return locations on Yemen's northern border with the Kingdom of Saudi Arabia (KSA) and southern coastal border. Enumerators placed at Flow Monitoring Points (FMPs) record arrivals of migrants and Yemeni nationals' returns in order to identify different patterns and types of migration, including quantitative estimates to help define the population of irregular migrants entering the country. Access constraints limit the ability to collect data at some migrant arrival points. IOM estimates that 31,617 migrants entered Yemen in addition to 13,313 Yemeni returns from neighboring countries "13,054 from KSA and 259 from Djibouti" during January to June 2020. This represents a decrease of about 63% compared to the same period in the last year 2019.

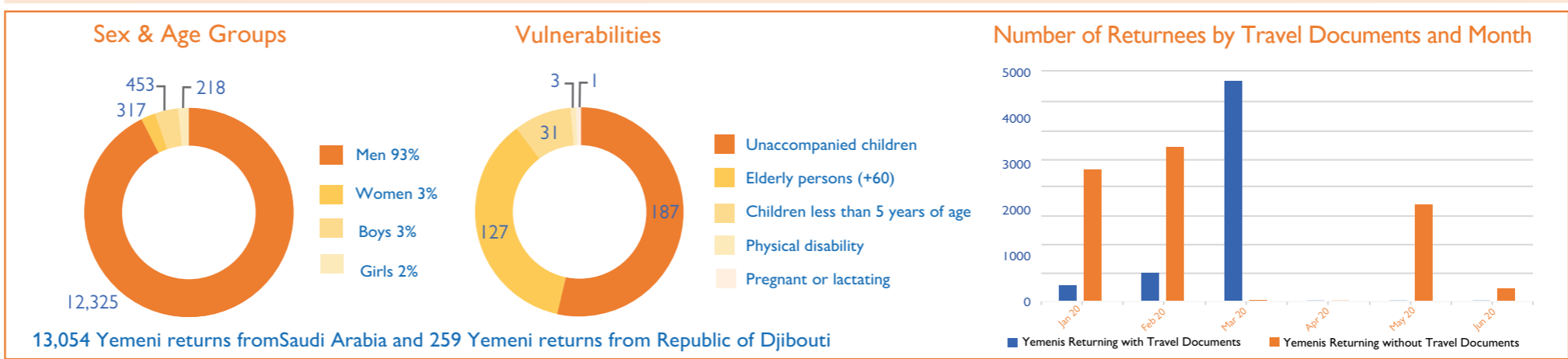
JANUARY - JUNE 2020 MIGRANT ARRIVALS: 31,617



Disclaimer: This map is for illustration purposes only. Names and boundaries on this map do not imply official endorsement or acceptance by IOM.



JANUARY - JUNE 2020 YEMENI RETURNS FROM KSA AND DJIBOUTI : 13,313



13,054 Yemeni returns from Saudi Arabia and 259 Yemeni returns from Republic of Djibouti

Flow Monitoring Activities are supported by



Disclaimer: Flow mentoring activities are not representative of all flows in the geographic region covered by the exercise and should be understood as only indicative of the individuals captured at the flow monitoring points during the time-frame indicated.