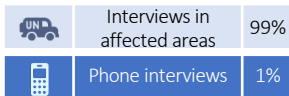


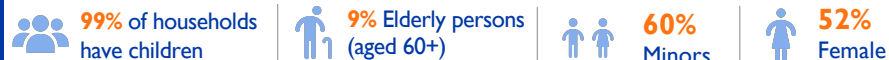
Assessment method



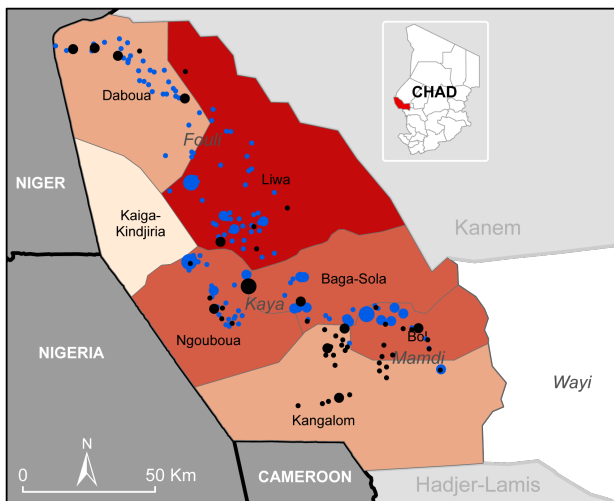
Displacement overview



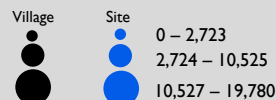
Demographic profile



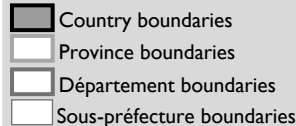
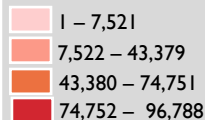
Demographic data were collected at the household level through a demographic calculator with a sample of 1,559 households



Number of displaced persons

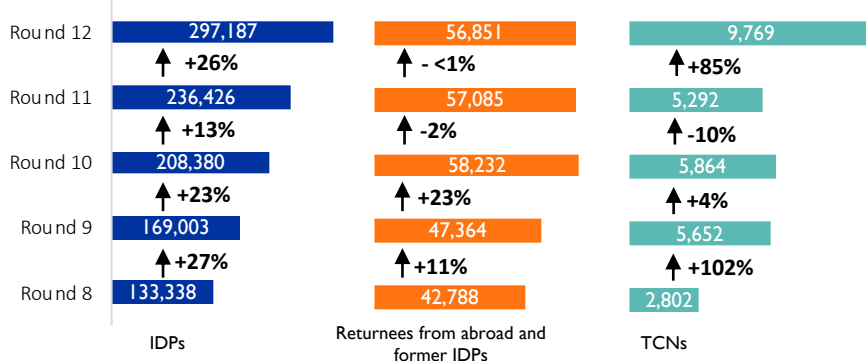


Displaced persons by sous-préfecture



The maps included in this report are for illustrative purposes only. Representations and the use of boundaries and geographical names on these maps may include errors and do not imply judgment of the legal status of a territory, nor official recognition or acceptance of these boundaries by IOM. Geographic coordinates of villages and sites were collected during field assessments. For the locations which were assessed remotely, the geographic coordinates were taken from the previous round.

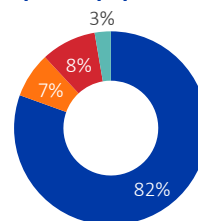
Changes in the number of displaced persons identified in the last five rounds



Context and methodology

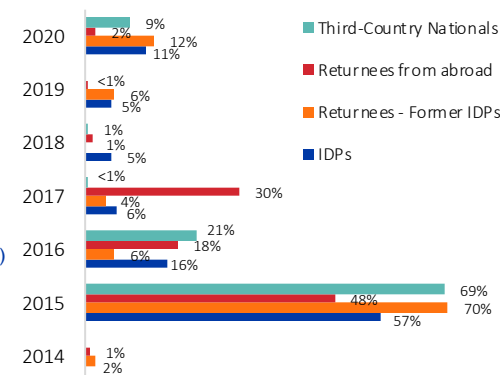
Since 2015, Chad has been the target of repeated attacks by armed groups conducting an insurgency in the Lake Chad Basin (Cameroon, Chad, Niger, Nigeria), which have caused significant internal and cross-border population displacements. In Chad, IOM has been implementing the Displacement Tracking Matrix (DTM) since May 2015 in Lac Province to gather updates on the number, profiles and needs of populations displaced due to the crisis, in order to inform humanitarian and development programmes. This dashboard presents key results from DTM assessments carried out with key informants between 23 June and 21 July 2020 in 221 displacement locations. **During this round of data collection, a 26 per cent increase in the number of Internally Displaced Persons (IDPs) was observed as compared to round 11. Apart from a wider geographic coverage (204 locations assessed during round 11, compared to 221 during round 12), this increase can be explained by the rise in preventive displacement movements triggered by worsening security conditions (mainly in Ngouboua and Kaiga-Kindjiria sous-préfectures), as well as by floods caused by heavy rainfall in Lac Province. In addition, the number of Third-Country Nationals (TCNs) grew by 85 per cent, notably due to the fact that several thousand fishermen fled border areas in Niger and Nigeria to take refuge in Lac Province, in more stable areas safeguarded by security forces. As in the last round, key indicators related to COVID-19 awareness and preparedness were included in data collection (see page 2).**

Displaced populations



297,187 Internally Displaced Persons (IDPs)
30,461 Returnees from abroad
26,390 Returnees – Former IDPs
9,769 Third-Country Nationals (TCNs)

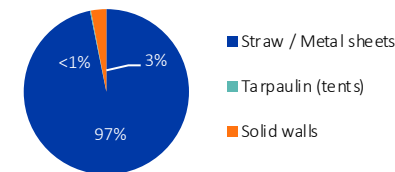
Year of displacement



Location of displaced persons



Shelter type



DTM ACTIVITIES IN LAC PROVINCE ARE SUPPORTED BY:



INTERNATIONAL ORGANIZATION FOR MIGRATION (IOM)

Contact: dtmtchad@iom.int – <https://displacement.iom.int/chad> – <https://dtm.iom.int/chad>

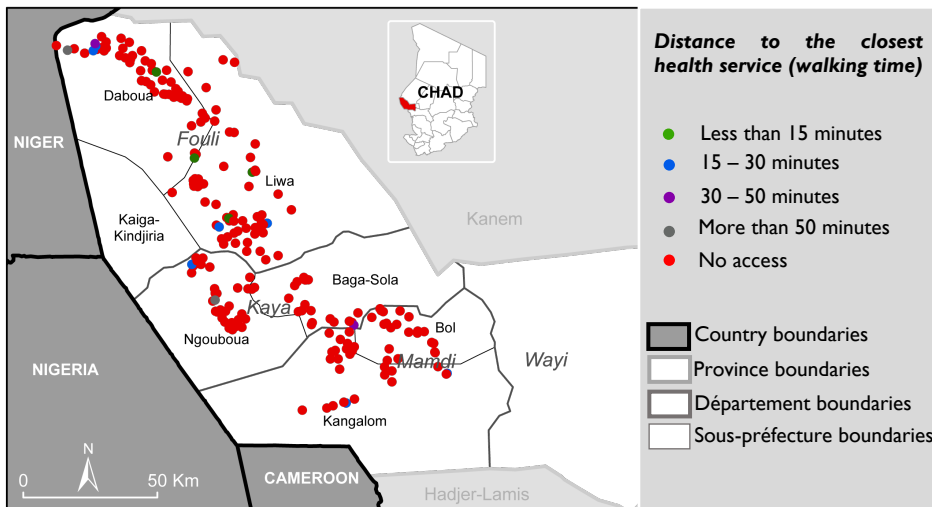
When quoting, paraphrasing or in any way using the information mentioned in this report, the source needs to be stated appropriately as follows: "Source: International Organization for Migration (IOM) [Month Year] Displacement Tracking Matrix (DTM)".



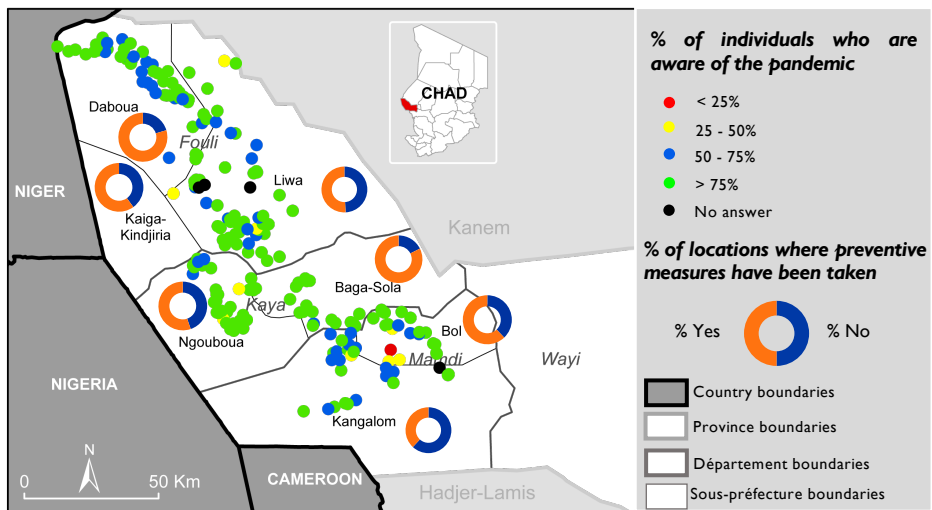
5 confirmed COVID-19 cases in Lac Province as of 17 August 2020

(including 4 recovered cases and 1 death). No case has been identified among displaced populations

Distance to the closest health services



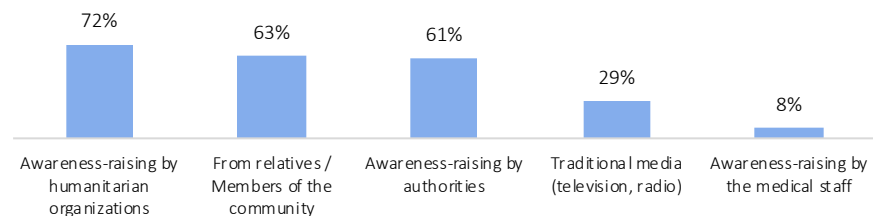
Awareness of COVID-19 and preventive measures taken in assessed locations



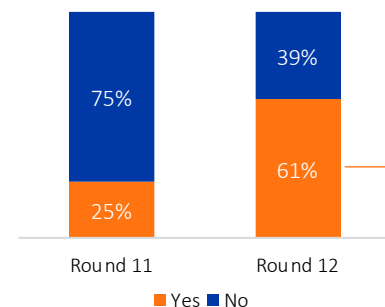
General awareness of COVID-19 in assessed locations

Level of COVID-19 awareness	% of locations	Round 11
Everyone is aware (> 75%)	71%	49%
Most individuals are aware (50 - 75%)	22%	19%
Some individuals are aware (25 - 50%)	5%	12%
None or very few are aware (< 25%)	0%	14%
Does not know / No answer	2%	6%

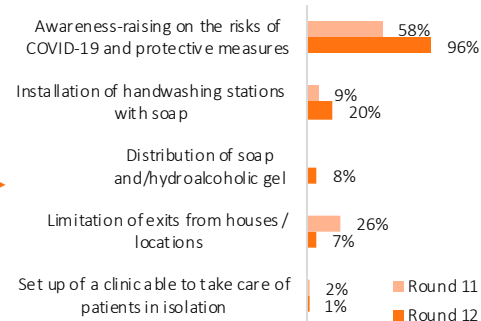
Means through which individuals gained awareness of COVID-19



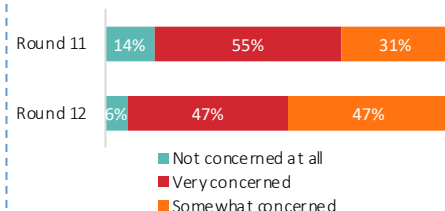
Have measures been taken to prevent or limit the spread of COVID-19?



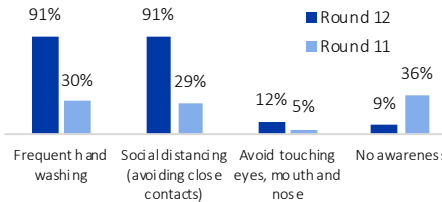
If yes, which measures?



Level of concern over COVID-19 of displaced populations living in assessed locations



Awareness of protective measures among displaced populations living in assessed locations



DTM ACTIVITIES IN LAC PROVINCE ARE SUPPORTED BY:



INTERNATIONAL ORGANIZATION FOR MIGRATION (IOM)

Contact: dtmtchad@iom.int – <https://displacement.iom.int/chad> – <https://dtm.iom.int/chad>

When quoting, paraphrasing or in any way using the information mentioned in this report, the source needs to be stated appropriately as follows: "Source: International Organization for Migration (IOM). [Month Year] Displacement Tracking Matrix (DTM)".



International Organization for Migration (IOM)
The UN Migration Agency