

COVID-19 Preparedness & Response: Mobility Update 13 (29 June - 12 July 2020)

Background and Methodology

DTM relies on its network of key informants and on secondary sources to provide a bi-weekly assessment of mobility and COVID-19 preparedness at priority locations in South Sudan. Table 2 on page 2 represents only points recommended by the Points of Entry Technical Working Group (PoE TWG). A more exhaustive list of entry points and displacement sites can be found [here](#).

If you wish to share any updates or flag any errors, please do not hesitate to contact IOM DTM at southsudanDTM@iom.int.

Overview

As of 12 July 2020, the cumulative total of COVID-19 cases in South Sudan stands at 2,148 with 41 confirmed deaths and 1,135 recoveries while a total of 11,862 tests have been carried out.

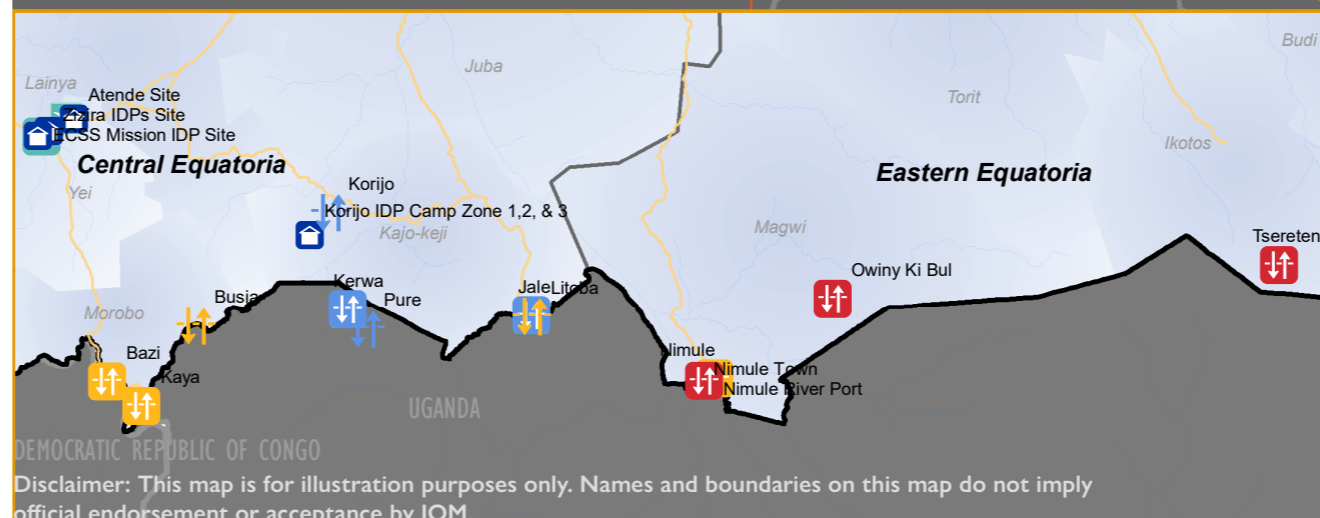
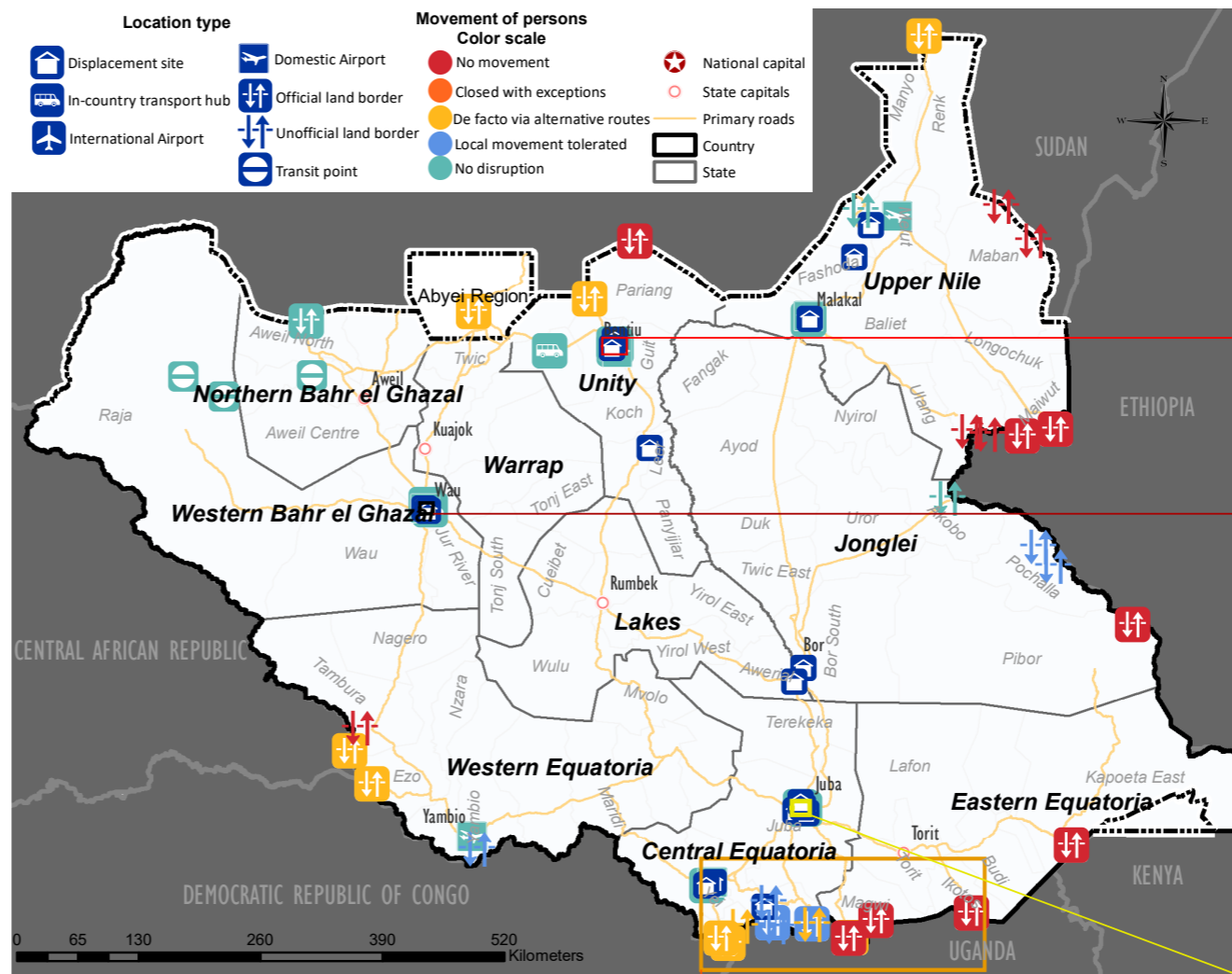
During the reporting period President Kiir rejected the idea of a renewed lockdown citing economic reasons. In an Independence Day presidential address, Kiir announced this measure would have more adverse repercussions for the citizens. Whilst a national lockdown is no longer expected, Juba University intends to stem the spread of the virus by switching to [online learning](#). Two of South Sudan's neighbours – [Kenya](#) and [Sudan](#) – have eased restrictions during the reporting period.

An unknown number of international and regional airlines have announced the [resumption of flights](#) from Juba International Airport in the coming weeks.

The economy has been hit by restrictive measures as seen in the [oil sector](#) and the number of [food insecure households](#) in South Sudan is expected to rise.

While there have been additional steps taken to respond to the outbreak of the disease, mobility restrictions and movement patterns have seen little change since the last update at assessed locations ([15–28 June 2020](#)).

The number of confirmed COVID-19 cases at PoC sites stands at two at Bentiu PoC site, 11 at Juba PoC sites and six at Malakal PoC site.



Disclaimer: This map is for illustration purposes only. Names and boundaries on this map do not imply official endorsement or acceptance by IOM.

Please note that coordinates are available upon request.

DTM tracked 75 locations including 19 displacement sites and 56 transportation hubs within the country and along international borders to report on COVID-19 related measures such as temperature screening and the availability of handwashing stations.

Of 19 displacement sites all were subjected to some form of risk communications, all sites made additional handwashing stations available and 2 (11%) screened temperatures at the gates. The movement of persons was stopped at 23 per cent of tracked in-country and border transit locations (13 locations). However, movement continued unhindered at 25 points (45%) with reports of alternative nearby routes being used at 10 (18%) and local movement by cross-border communities being tolerated at a further 8 locations (8%). Temperature screening was practiced at 11 locations (20%) while risk communication was made available at 71 per cent of tracked transit areas (40 locations). While handwashing stations had been constructed at 29 locations (52%), these were not put to use by travellers in all hubs.

Key insights on countries bordering South Sudan

- **SUDAN:** Abyei Amiet and Pantou continue to record cross-border movements of people via alternative routes, while movement of cargo remains uninterrupted. Sudan began [loosening lockdown measures](#) on 8 July 2020.
- **ETHIOPIA:** Local movement through Boyi/Dima, and Daktek has been tolerated, while movement of people and cargo through Akobo continues uninterrupted. Other points in Nasir and Maiwut have not seen any movement due to restrictions.
- **UGANDA:** The movement of persons to and from Uganda is still restricted except for cargo. However, DTM continues to observe the use of alternative routes along this porous border. On 1 July 2020, UNHCR welcomed Uganda's reception of approximately [45,000 people fleeing the Democratic Republic of Congo](#).
- **DEMOCRATIC REPUBLIC OF CONGO:** While the movement of cargo through Bazi and Gangura remains uninterrupted the points have been closed to the movement of persons who are said to mostly find alternative crossing points. The United Nations Organization Stabilization Mission in the Democratic Republic of the Congo warned the UN Security Council of the new dangers posed by the COVID-19 pandemic by [exacerbating tensions in the country's coalition government](#).
- **CENTRAL AFRICAN REPUBLIC:** Source Yubu and Nabia Pai also remain closed for movement of persons with a few alternative movements nearby points.
- **KENYA:** Nadapal border point remains open for the movement of cargo and closed for movement of persons with no alternative movements recorded as of this reporting week. The Kenyan government announced the [loosening of COVID-19 related restrictions](#).

Table 1. Mobility and preparedness assessment at selected IDP sites within South Sudan

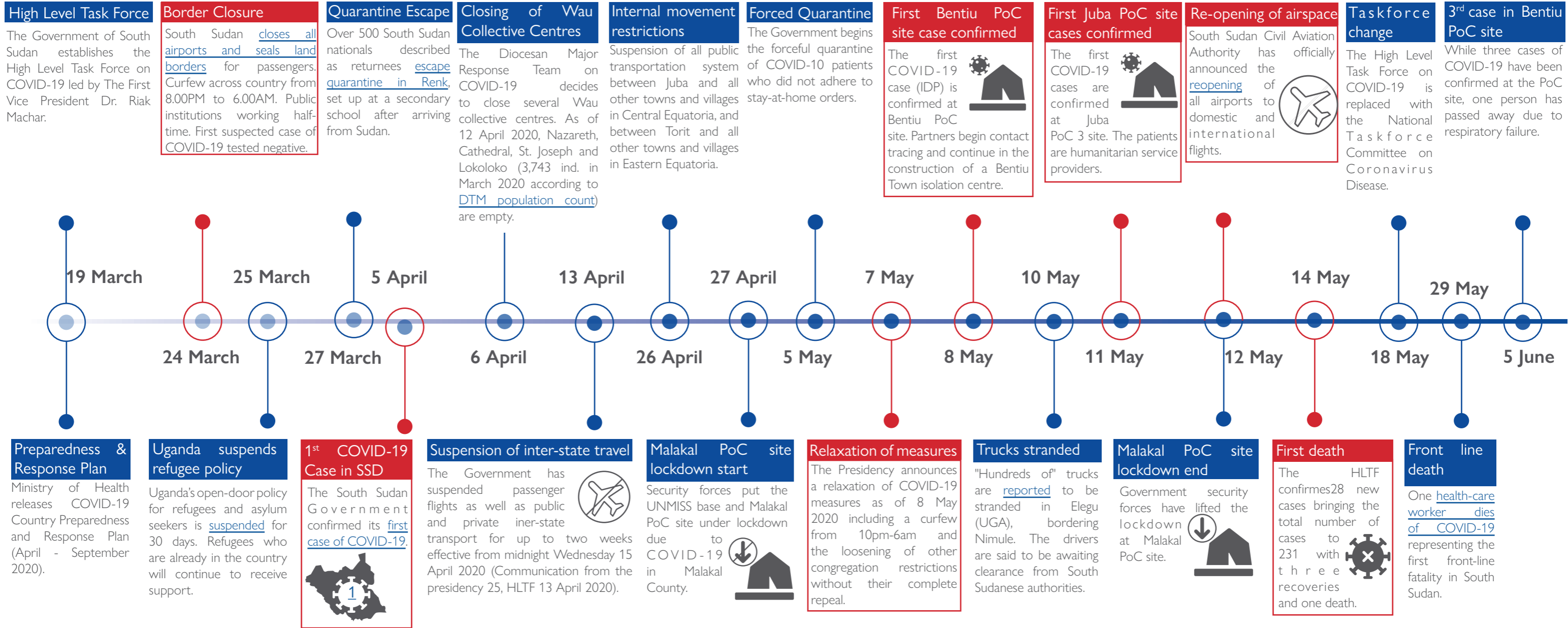
County	Location	Type	Population ¹	Movement Restrictions within and in/ out of the site	Average daily flow in / out (latest available data)	Approx. % overnight travel	Approx. % of out of county travel for overnight travel	Temperature Screening	Hand-washing stations	Risk communication	Comment
Rubkona	Bentiu PoC	PoC	99,052	None	12,219/12,297	49%	51%	No	Yes	Yes	There are two confirmed COVID-19 cases so far in Bentiu PoC site, while two COVID related deaths have been reported. UNMISS and other partners continue to operate with minimum footprint. While plans are in place to convert a former humanitarian hub in Bentiu town to an isolation facility, MSF has operationalized an on-site isolation facility.
Malakal	Malakal PoC	PoC	27,930	None	4,500/4,423	21%	61%	No	Yes	Yes	There are six confirmed COVID-19 cases so far in Malakal PoC site, while one COVID related death has been reported. To establish an isolation facility, IOM provided shelter material to Malakal Hospital. An on-site isolation facility will be operational once electricity is connected. General food distribution covering a two-month period has been completed.
Wau	Wau PoC AA	PoC AA	9,990	None	3,846/4,489	0%	NA	No	Yes	Yes	Isolation facilities have been established at the Al-Mukta PHCC, Mary Help PHCC, and Wau Teaching Hospital in Wau Town while on site temporary facilities are situated within the IMC and IOM clinics.
Wau	Masna	Collective centre	6,016	None	Unkn.	6%	85%	No	Yes	Yes	While some handwashing facilities are available, these are still missing in the area populated by a new arrivals in the second quarter of 2020 fleeing violence in Jur River.
Bor South	Bor PoC	PoC	1,921	None	Unkn.	Unkn.	Unkn.	No	Yes	Yes	There are no COVID-19 cases so far in Bor PoC site. Public gatherings remain limited to 10 people. Temperature screening at the PoC gate is suspended due to malfunctioning of the equipment
Juba	Juba PoC1	PoC	6,880	None	Unkn.	Unkn.	Unkn.	Yes	Yes	Yes	There have been 11 confirmed COVID-19 cases at Juba PoC sites (1 & 3). An onsite isolation facility is not available at PoC 1. Cases are referred to a temporary isolation unit established by IMC before being referred to the infectious disease unit in Juba. Other preparatory measures include availability of an on- site ambulance for emergency referrals and involvement of WASH committee in RCCE messaging at water points.
Juba	Juba PoC3	PoC	22,778	None	Unkn.	Unkn.	Unkn.	Yes	Yes	Yes	

Table 2. Mobility and preparedness assessment at urban transport hubs and points of entry in South Sudan recommended by the Points of Entry Technical Working Group (PoETWG)

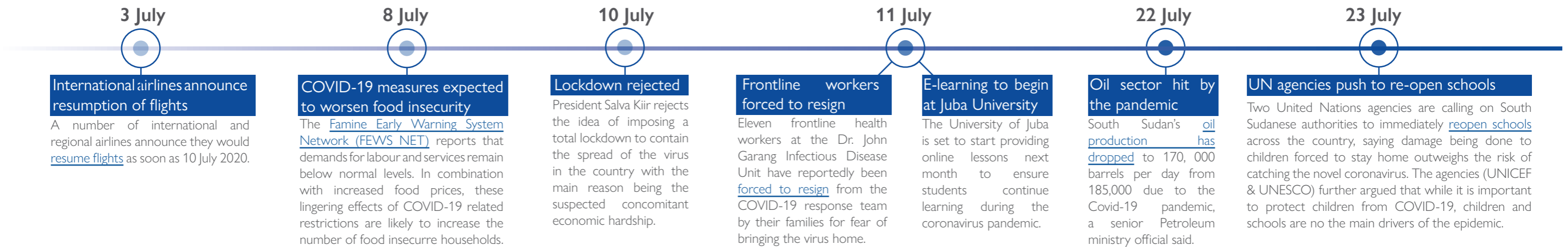
County	Location	Type	Border to	Mvmnt of cargo as of 12 July 2020	Mvmnt of persons as of 12 July 2020	Into / out of point 2019 daily average ²	Into / out of point during reporting period daily average ²	Temperature Screening	Hand-washing stations	Risk communication	Isolation / quarantine area	Increased security forces	Comment
Abyei	Abyei (Amiet)	Official land border	SDN	No disruption	De facto via alternative routes	20/32	2/9	Yes	Yes	Yes	Yes	Yes	Global Hand Aid is managing a former detention centre which has been turned into a COVID-19 isolation and quarantine space in Amiet.
Akobo	Akobo	Unofficial land border	ETH	No disruption	No disruption	Unknown	11/17	No	No	Yes	No	No	
Aweil East	Majokynthiou	Transit point	SDN	No disruption	No disruption	6/24	59/41	No	No	No	No	No	
Aweil North	Kiir Adem	Official land border	SDN	No disruption	No disruption	13/26	57/46	No	No	No	No	No	
Juba	Juba Intl. Airport	Intl. Airport	Inland	No disruption	No disruption	Unknown	346/346	Yes	Yes	Yes	Yes	No	
Kapoeta East	Nadapal	Official land border	KEN	Incoming only	No movement	Unknown	0/0	Yes	Yes	Yes	No	Unknown	The Red Cross installed hand washing stations at Nadapal PoE.
Maban	Yabous	Unofficial land border	SDN	No disruption	No movement	Unknown	0/0	Yes	Yes	Yes	No	No	
Maban	Elfoj	Unofficial land border	SDN	No disruption	No movement	Unknown	0/0	Yes	Yes	Yes	No	No	
Magwi	Nimule	Official land border	UGA	No disruption	De facto via alternative routes	124/156	63/37	Yes	Yes	Yes	Yes	Yes	People continue to move via alternative routes while only trucks carrying cargo are permitted to move along the border.
Maiwut	Pagak	Official land border	ETH	No disruption	No movement	Unknown	0/0	No	No	No	No	Unknown	
Maiwut	Jekow	Official land border	ETH	No disruption	No movement	Unknown	0/0	No	No	No	No	Unknown	
Morobo	Kaya	Official land border	UGA	No disruption	De facto via alternative routes	249/198	3/2	No	No	Yes	No	Yes	
Pariang	Pantou	Official land border	SDN	No movement	De facto via alternative routes	Unknown	0/0	No	No	Yes	Yes	Unknown	Travelers use alternative routes and usually board buses from Panakuach to Bentiu.
Pariang	Jau	Official land border	SDN	No movement	No movement	Unknown	0/0	No	No	Yes	Yes	Unknown	
Renk	Wunthaw	Official land border	SDN	No disruption	De facto via alternative routes	Unknown	0/0	No	No	No	No	Yes	
Rubkona	Rubkona Suksita	In-country transport hub	Inland	No disruption	No disruption	9/28	515/469	No	Yes	Yes	Yes	No	

1. Latest population counts or biometric registration data when population counts aren't available. 2 Averages from IOM DTM Flow Monitoring or KI information. Into and out of SSD for border points.

South Sudan COVID-19 Timeline (main events)



South Sudan COVID-19 Timeline (reporting period)



Summary of tracked border crossing points and transportation hubs Report 13 (29 June - 12 July 2020)

Type	#
Domestic Airport	6
In-country transport hub	13
Intl. Airport	1
Official land border	19
Transit point	3
Unofficial land border	14
Total	56

Movement of cargo	#
Incoming only (trucks)	1
Incoming only (small scale)	2
No disruption	47
No movement	6
Total	56

Movement of people	#
De facto via alternative routes	10
Local movement tolerated	8
No disruption	25
No movement	13
Total	56

C-19 measures	Yes	No	Unknown
Temperature screening	11	45	0
Handwashing stations	29	27	0
Isolation / quarantine area	14	42	0
Increased security forces	7	11	38
Risk Communication	40	16	0

For an excel version of the above summary as well as table 1 & 2 (p2) including more transport hubs and points of entry, please click here.

COVID-19 Cases and Deaths



Worldwide:

- 12,552,76 confirmed cases
- 561,617 deaths



Number of cases / deaths in neighboring countries:

- Sudan: 10,250 / 650
- Central African Republic: 4,288 / 53
- Democratic Republic of the Congo: 7,970 / 188
- Uganda: 1,013 / 0
- Ethiopia: 7,560 / 127
- Kenya: 9,726 / 184



South Sudan*

- 2,148 confirmed cases
- 41 deaths
- 1,135 recoveries

Source: WHO, update as of 12 July 2020
*Source: Ministry of Health, South Sudan