



DTM OVERVIEW

The Displacement Tracking Matrix (DTM) is IOM's primary suite of tools used to track and monitor displacement and population mobility in over 60 countries around the world including Sudan. During the month of May 2017, IOM Sudan teams conducted 13 field missions to register and verify different caseloads of IDPs, returnees, refugees and affected host communities in the states of Central Darfur, West Darfur and West Kordofan. A total of 92,239 individuals were registered during the conducted missions. Additionally, the DTM teams tracked more than 3,065 individuals arriving to different localities in South Kordofan state. All DTM activities are conducted in collaboration with the Humanitarian Aid Commission (HAC), the Area / Humanitarian Country Team (A/HCT) and partners on the ground.

26
DTM Missions
More than **106** sites visited / planned to be visited in these missions

13 completed

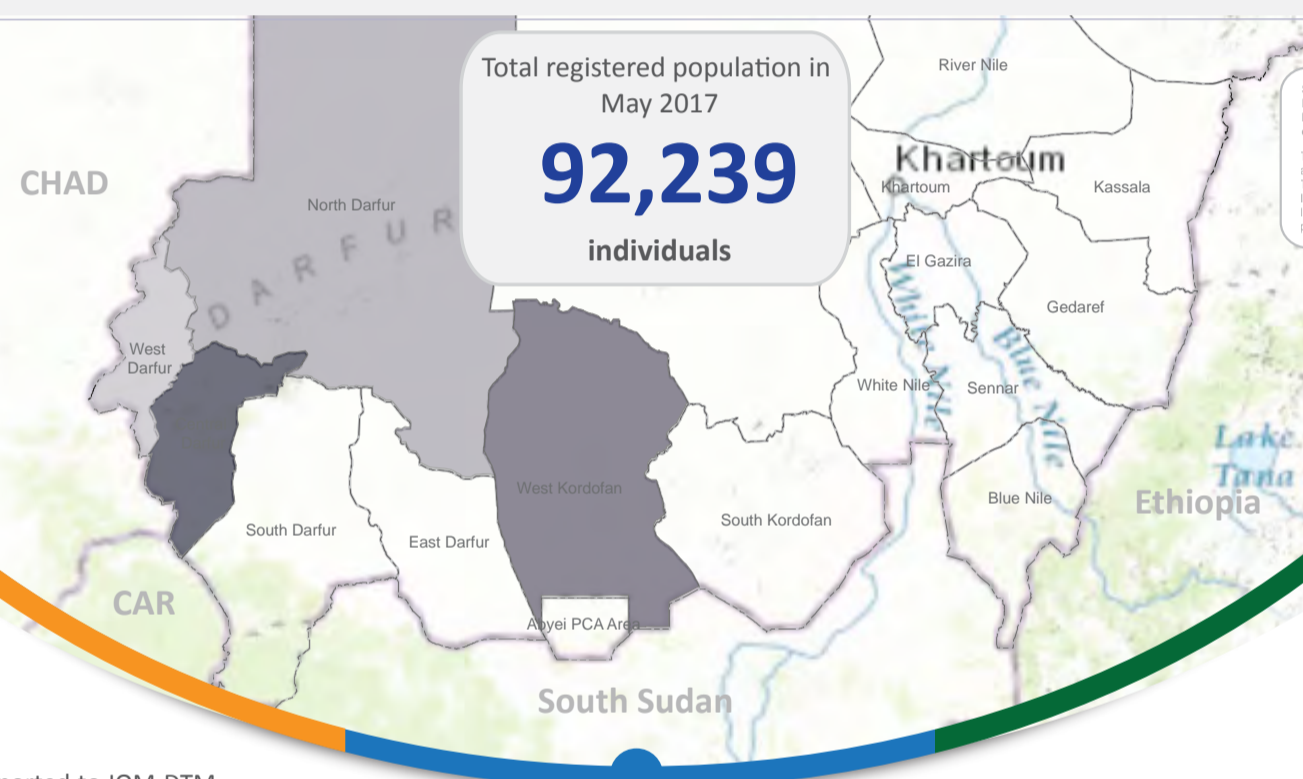
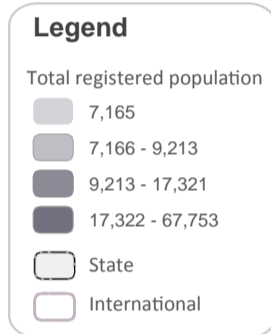
DTM teams completed 13 registration missions in May, consisting of 1 mission in North Darfur, 1 in South Darfur, 3 in Central Darfur, 6 in West Kordofan, and 2 in West Darfur.
76 sites / villages visited by the 13 missions.

on-going

Currently, the DTM teams have no on-going mission. 3 teams returned from Guldo, Thur (Central Darfur) and Alodi (West Kordofan) during the last few days of May.

13 Planned

13 missions are initially planned for June, consisting of 1 in North Darfur, 3 in South Darfur, 2 in South Kordofan, 3 in Central Darfur and 4 in West Kordofan
More than 30 sites to be visited in these missions.



Sources: Esri, HERE, DeLorme, Intermap, increment P Corp., GEBCO, USGS, FAO, NPS, NRCAN, GeoBase, IGN, Kadaster NL, Ordnance Survey, Esri Japan, METI, Esri China (Hong Kong), swisstopo, MapmyIndia, © OpenStreetMap contributors, and the GIS User Community

The names and boundaries on this map do not imply official endorsement or acceptance by the Government of Sudan or IOM. This map is for planning purposes only. IOM cannot guarantee that this map is error free and therefore we accept no liability for consequential and indirect damages arising from the use of this map product.

Returnees
35,390
Individuals

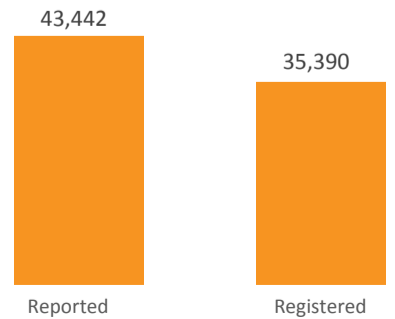
- A total of **21,488** individual were reported to IOM-DTM as returnees at **5** locations (Domaia in South Darfur, Thur in Central Darfur, Taraf Neltity and Kirty in West Darfur). The DTM team registered **13,436** returnees in May 2017 (Domaia caseload not included).

- 21,945** returnees were registered by DTM teams in Guldo. Reported figures on this caseload were not received before the exercise.

- Additionally, **9,213** returnees have been tracked and registered in **9** localities in North Darfur State. The figure reflects the cumulative number of returnees registered during 2017.

- Returnees in Um Baru, Tina and Kornoi in North Darfur, and in Kirty, West Darfur were identified as refugee returnees. Whereas, Domaia in South Darfur, Thur and Guldo in Central Darfur, Taraf Neltity in West Darfur and Tawilla, El Fasher, Malit, Kutum, Kalimendo and Kalimendo localities in North Darfur had IDP returnees.

Number of individuals reported versus found and registered in May



IDPs

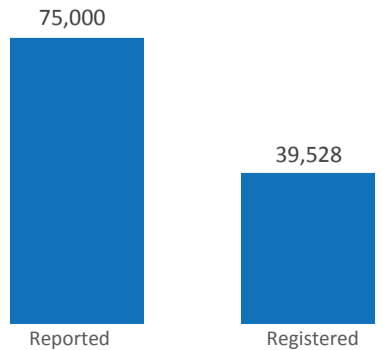
39,528
Individuals

- All IDPs registered in May were from the old IDP caseloads. No new IDPs were reported to the DTM team or registered by the DTM team during this month.

- In the old caseload a total of **75,000** individuals were reported as IDPs, however during the registration exercises, the DTM teams found and registered only **39,528** individuals (an overall reduction of **50%** from the reported caseload).

- A total of **14,591** IDPs were registered in Thur (**56%** reduction from the reported caseload), **5,371** in Guldo (**89%** from the reported caseload) and **19,566** in Nertiti (**7%** reduction from the reported caseload).

Number of individuals reported versus found and registered in May



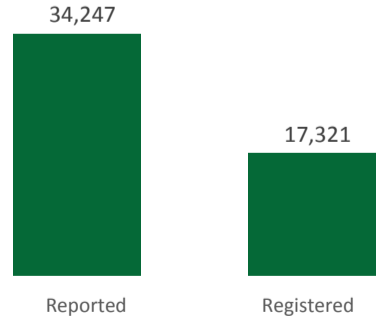
Refugees
17,321
Individuals

- DTM registration exercises covered **68** locations / villages in **6** localities of West Kordofan state.

- A total of **34,247** South Sudanese were reported at **6** locations, of which only **17,321** individuals were found and registered (**49%** reduction from the reported caseload).

- The registered South Sudanese comprised of the old caseloads as well as the new caseload arriving in Sudan since the 2013 South Sudan conflict erupted.

Number of individuals reported versus found and registered in May



Notes

- The above figures may slightly change after processing the data to the database.
- Details on the registered population (demographic data, vulnerability, place of origin, etc.) and beneficiary lists are available upon request.
- Mission reports and statistical summaries on all DTM missions are available upon request.